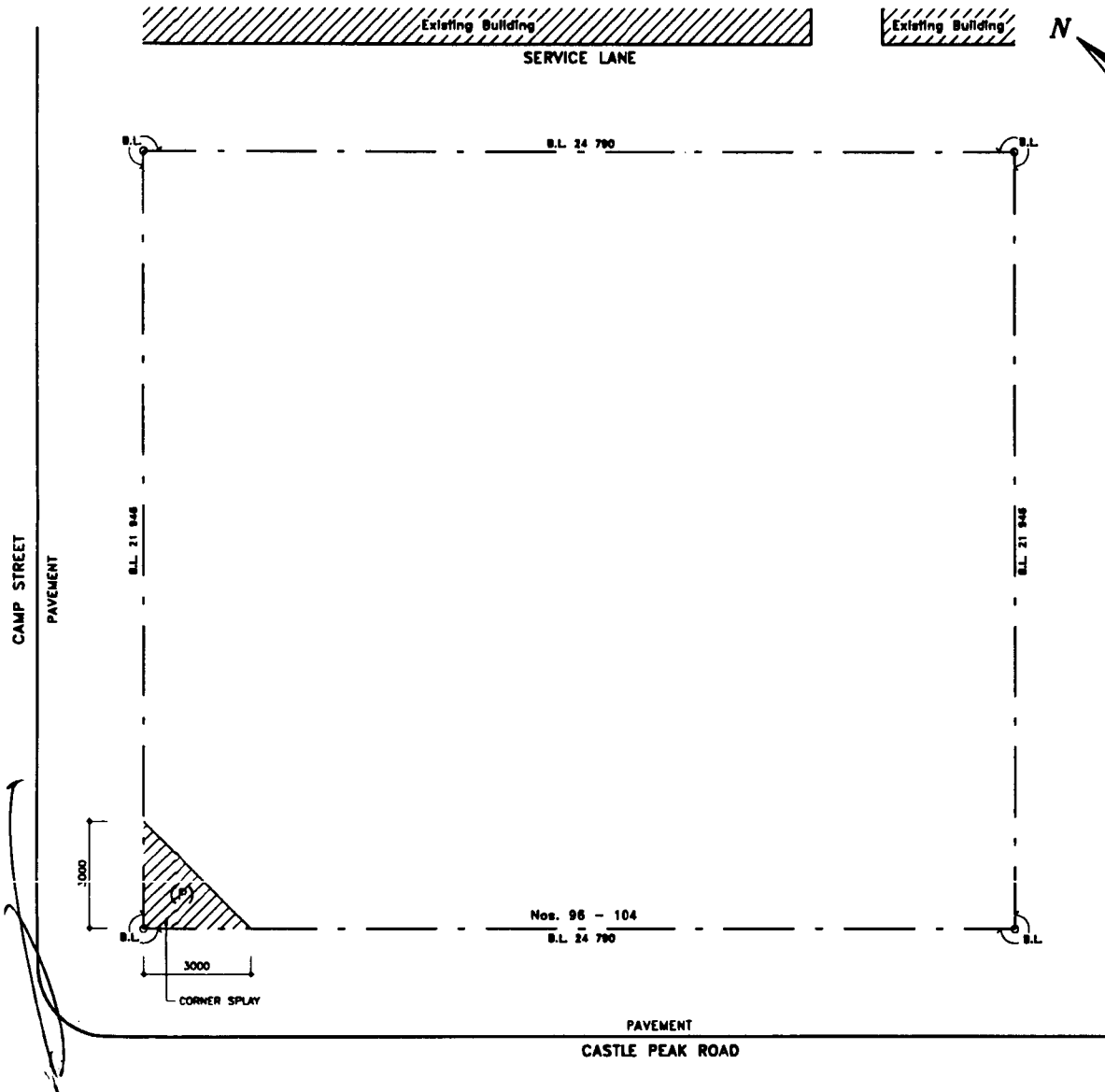
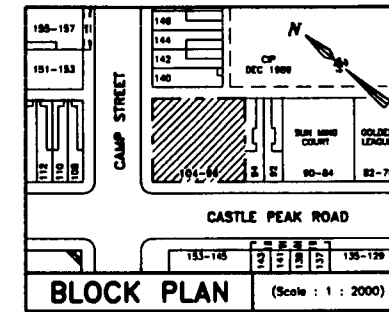


PLAN OF DEDICATED AREA FOR PUBLIC PASSAGE

ON N.K.I.L. 2680 s.G, s.H, s.I, s.J & R.P.

AT Nos. 96 - 104 CASTLE PEAK ROAD, KOWLOON

SCALE : (1 : 200)



LEGEND :



DEDICATED AREA (COLOURED PINK HATCHED BLACK)

THE CLEAR HEIGHT OF THE DEDICATED AREA IS NOT LESS THAN 3.500 METRES ABOVE GROUND LEVEL.

DEDICATED AREA (COLOURED PINK HATCHED BLACK)

CALCULATION :

$$(3.000 \times 3.000) / 2 = 4.500 \text{ m}^2$$

T.K.TSUI DIP. BLDG. SC (LIVERPOOL) C. ENG.
F.I. STRUCT. E., F.H.K.I.E., M.A.S.C.E.
AUTHORIZED PERSON & R. S. E.