

sd.
(Anthony William Samson)
p. Director of Buildings and Lands

18 895

SCAVENGING LANE

BOUNDARY LINE

N.K.I.L. 1221

(P)

SOUTH WALL ROAD

15 850

2500

DEDICATED PORTION: 2500 x 2500 CORNER SPLAY WITH CLEAR HEIGHT 5.5M DEDICATED
TO PUBLIC FOR THE PURPOSE OF PASSAGE

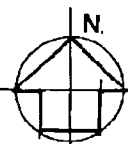
2500

BOUNDARY LINE

NGA TSIN WAI ROAD

SITE PLAN 1:100

Planning and Zoning No. 5523140



SOUTH WALL ROAD

NKIL 1221
NO. 44, 50

TAK KU LINE RD.

NGA TSIN WAI RD.

BLOCK PLAN 1:1000

N.K.I.L. 1221
NO. 44. 46. 48. 50
NGA TSIN WAI RD.
SOUTH WALL RD. KLN.

P = PINK

SIGNED and SEALED for and on behalf
of Gold Pretty Development Limited

For and on behalf of
GOLD PRETTY DEVELOPMENT LIMITED

DEVELOPER
Authorized Signature(s)