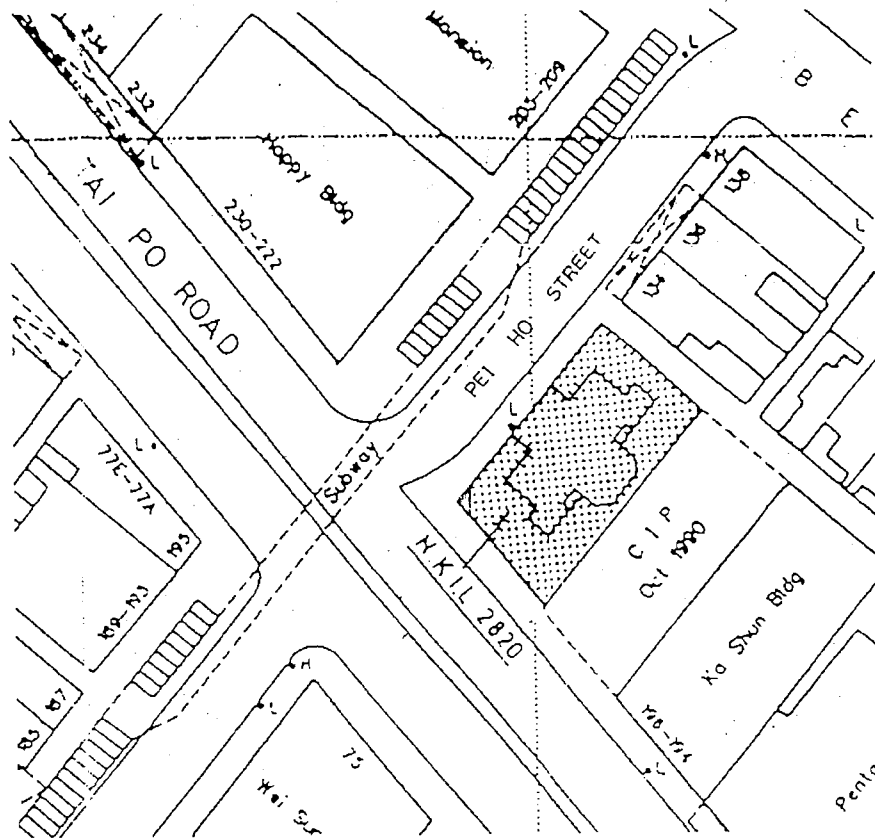
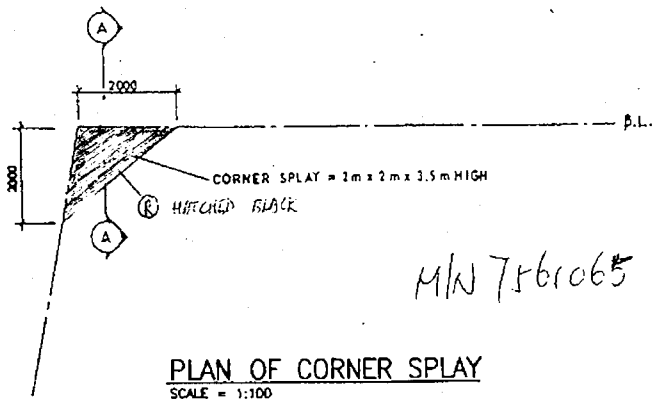


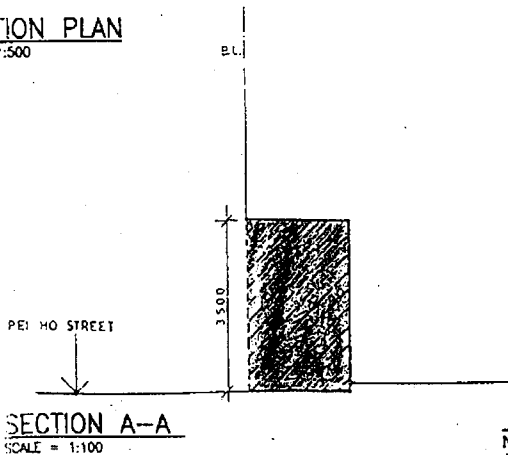


P-2

TAI PO ROAD



LOCATION PLAN
SCALE = 1:500



Nelson S. Chow
NELSON N.S. CHOW B Arch HKIA ARAIA
 Authorized Person Architect

A 15/2/98		B 31/3/98	
PLAN & SECTION OF CORNER SPLAY			
PROJECT : PROJECT No : 202 PROPOSED COMMERCIAL / RESIDENTIAL DEVELOPMENT ON N.K.I.L. 2820 AT PEI HO STREET AND TAI PO ROAD SHAM SHUI PO, KOWLOON.		DATE : 13-2-1998	DWG. NO. : SC-1
PROJECT : 202		SCALE : AS SHOWN	COMP. CODE :
CHOWS ARCHITECTS LIMITED ROOM 419, 415H FLOOR, 113 ANGLE STREET, HONGKONG, KOWLOON. TEL: 23718078 FAX: 25718159			