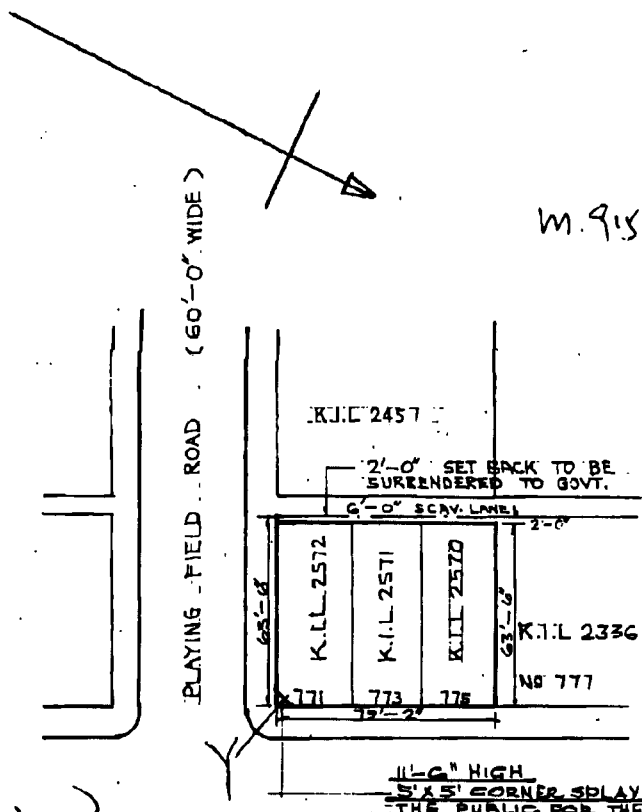


B.O. 7/6 262/72

M. 915496



*John George Stean*

11'-6" HIGH  
5' X 5' CORNER SPLAY TO BE DEDICATED TO  
THE PUBLIC FOR THE PURPOSE OF PASSAGE

NATRAN ROAD (100'-0" WIDE)

M 915496

John George STEAN  
Acting Principal Government Building Surveyor

RECEIVED BY  
20 JUL 1972  
P. W. D.

BLOCK PLAN

( SCALE : 50-FT - 1IN. )

P. L. LEUNG & ASSOCIATES  
*P. L. Leung*  
Architect