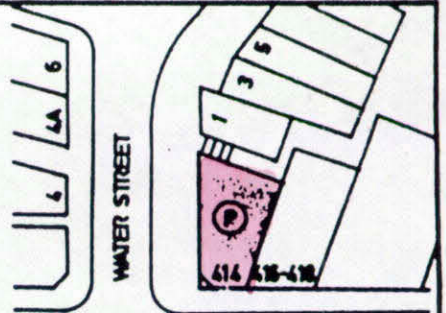


**INLAND LOT No 5614**

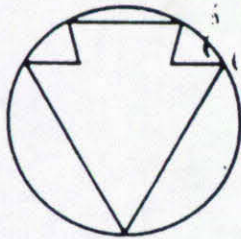
Annexure to Memorial No. **3974563**



QUEEN'S ROAD WEST

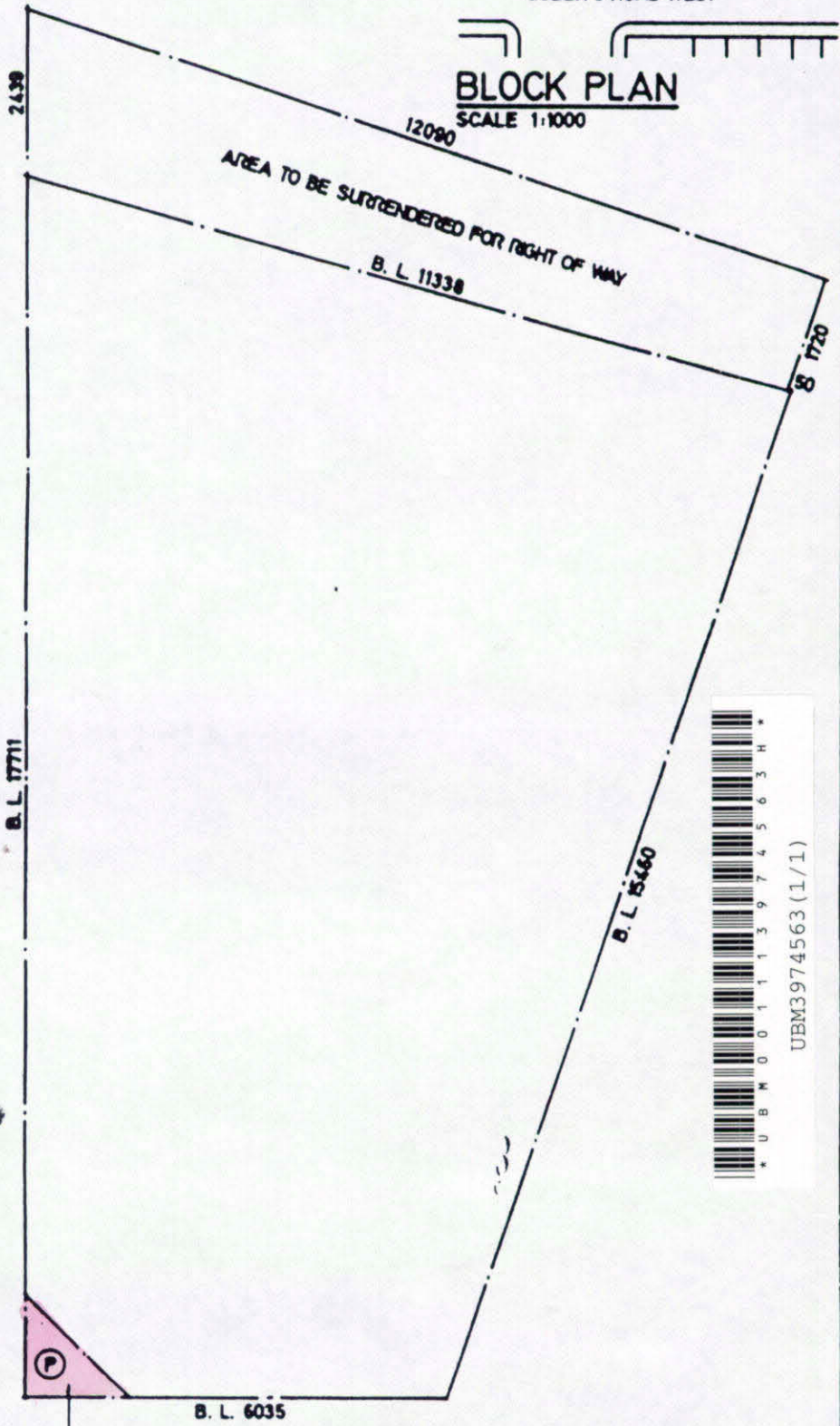
**BLOCK PLAN**  
SCALE 1:1000

Sd. A.W. Samson  
p. Director of Buildings  
and Lands



Sd. For and on behalf of  
Wing Hang Bank, Ltd.

Sd. For and on behalf of  
Yee Chung Development  
Co., Ltd.



For and on behalf of  
**YEE CHUNG DEVELOPMENT COMPANY, LIMITED**

RECEIVED BY  
AUG 3 5 56 PM '10  
R. & I. SERVICES & PLANNING  
BUILDINGS DEPARTMENT  
Director

1500

1500

AREA TO BE DEDICATED TO PUBLIC FOR THE PURPOSE OF PASSAGE  
FOR CLEAR HEIGHT 5.10m — BUILDING (PLANNING) REG. 22 (1)  
FOR EXCESS OF SITE COVERAGE AND PLOT RATIO APPLIES (AREA: 1125 m<sup>2</sup>)

WATER STREET  
水街

PAVEMENT

QUEEN'S ROAD WEST

皇后大道西

**PLAN**  
SCALE 1:100

414 Queen's Rd West  
皇后大道西 414 號

**P. L. WONG & ASSOCIATES**  
CONSULTING ENGINEERS & ARCHITECTS