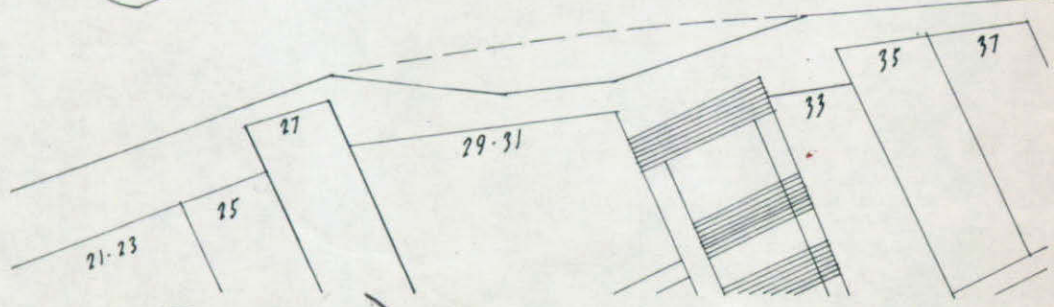
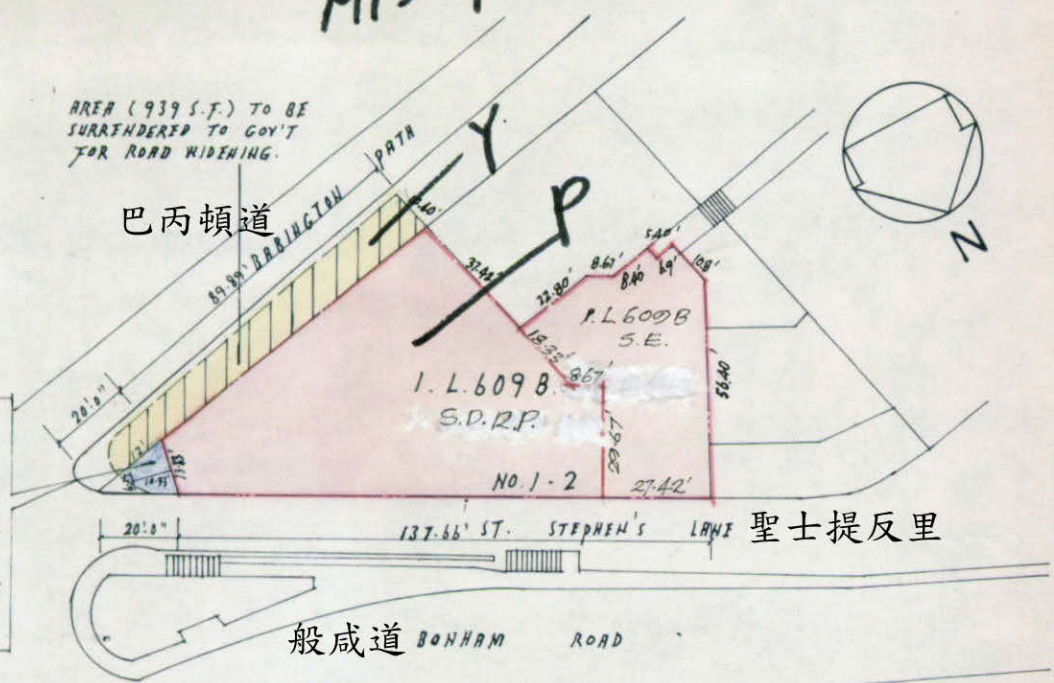


M1309824

AREA (939 S.F.) TO BE SURRENDERED TO GOV'T FOR ROAD WIDENING.

巴丙頓道

AREA OF CORNER SPLAY:  
 $(6.17' + 13.83') / 2 \times 10.33'$   
 = 103.30 S.F. (APPROX.)  
 TO BE DEDICATED TO THE PUBLIC FOR THE PURPOSE OF PASSAGE, A CLEAR HEIGHT OF NOT LESS THAN 16'-6" ABOVE THIS AREA SHALL BE MAINTAINED.



SCALE: 50 FT. TO ONE IN.

*E. T. Kennard*  
 E. T. Kennard  
 Principal Government Building Surveyor



*麥蘇琴*  
*李耀修*  
*梁玉珍*  
*麥旭光*

1-2 St. Stephen's Lane  
 聖士提反里 1-2 號