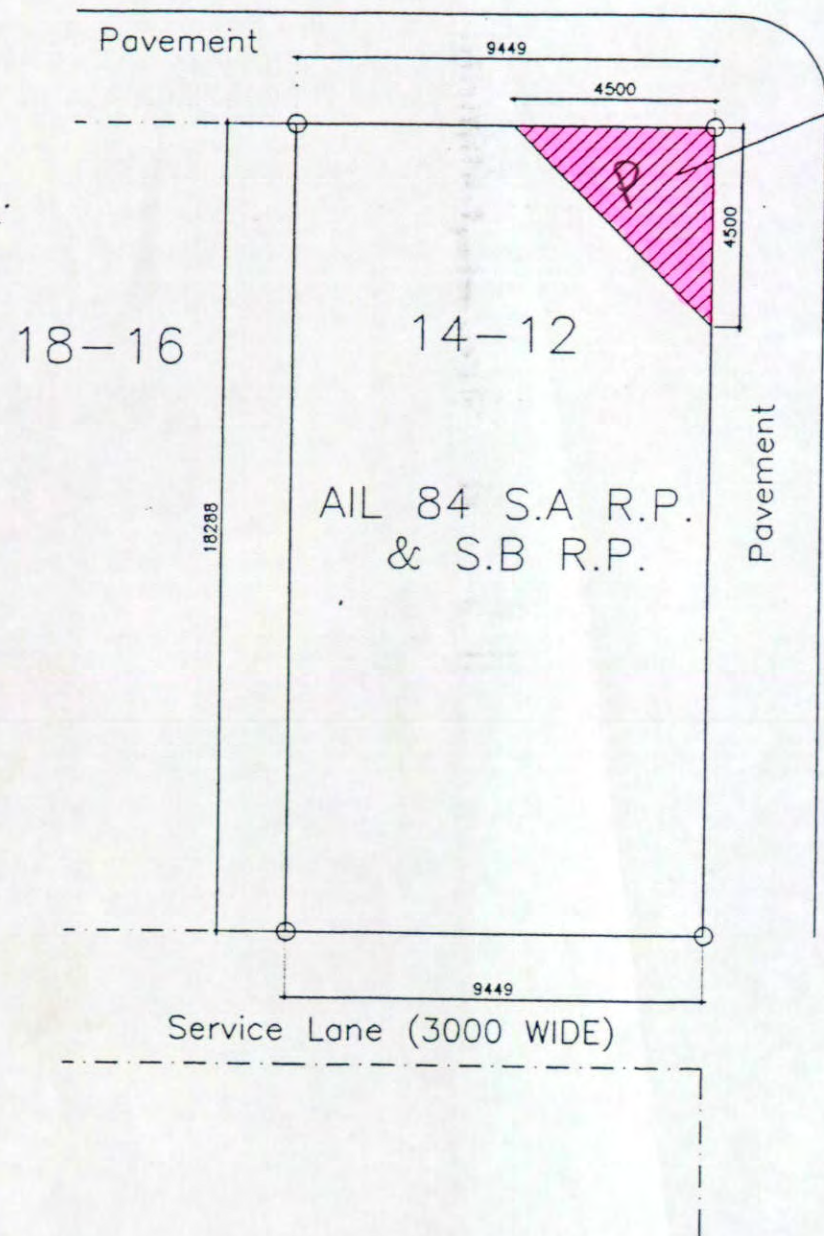




UBM6280499 (1/1)

湖北街 Wu Pak Street  
(13000 WIDE)



Corner splay to be dedicated to the public for the purpose of passage

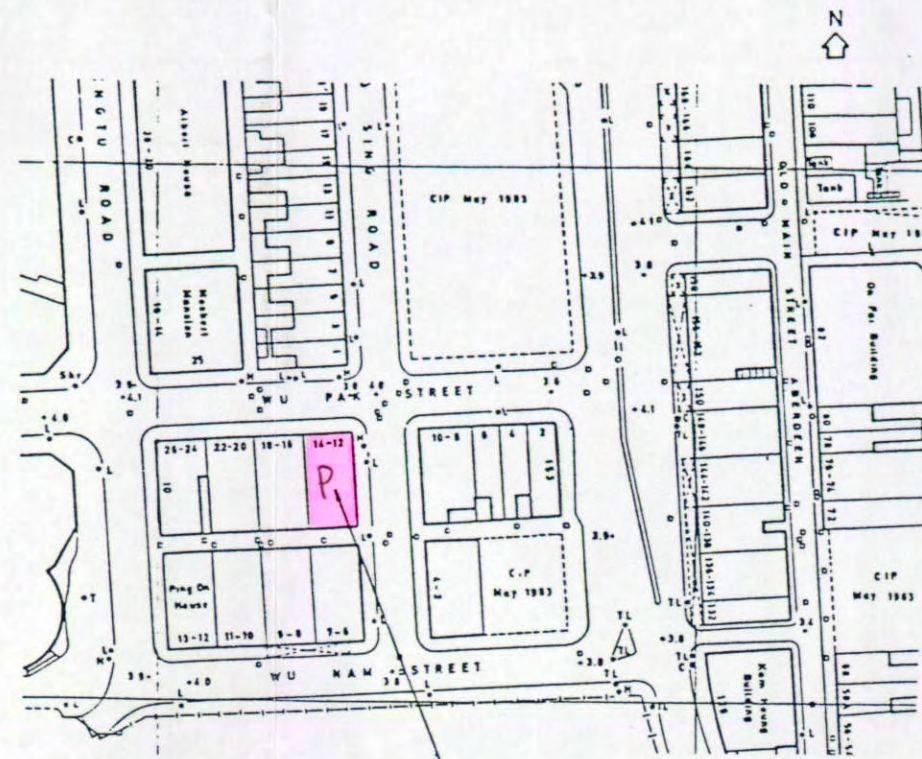
Tung Sing Road  
(12300 WIDE)  
東勝道

Notes :



Corner Splay dedicated Area of 4500 x 4500 x 5500 (headroom) = Approx. 10.125m<sup>2</sup>

Dedication Plan for the Corner Splay Dedication in connection to the Proposed Commercial Building at 12-14 Wu Pak Street, Aberdeen, Hong Kong (AIL 84 S.A R.P. & S.B R.P.) 湖北街 12 號



Proposed Commercial Building at 12-14 Wu Pak Street, Aberdeen, Hong Kong (AIL 84 SARP & SBRP)

BLOCK PLAN

For and on behalf of  
SMART PROFIT DEVELOPMENT LIMITED  
俊利發展有限公司

Director