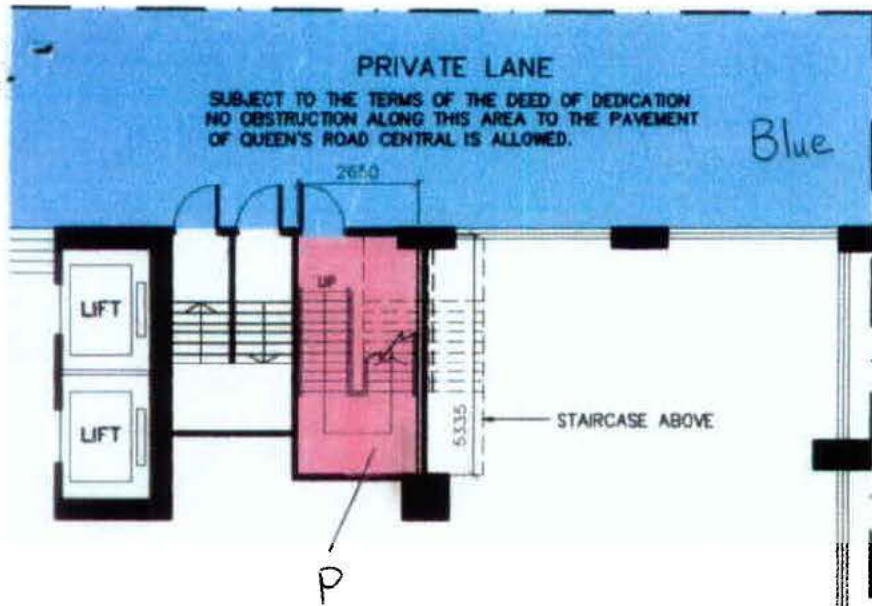
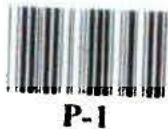


B.D. REF NO. : 2-3/2319/96/3

(106)
sec III



1 - 3 PEDDER STREET
21 - 27 QUEEN'S RD. CENTRAL
M.L. 3R.P., M.L. 5R.P., M.L. 7R.P.



皇后大道中

QUEEN'S ROAD CENTRAL

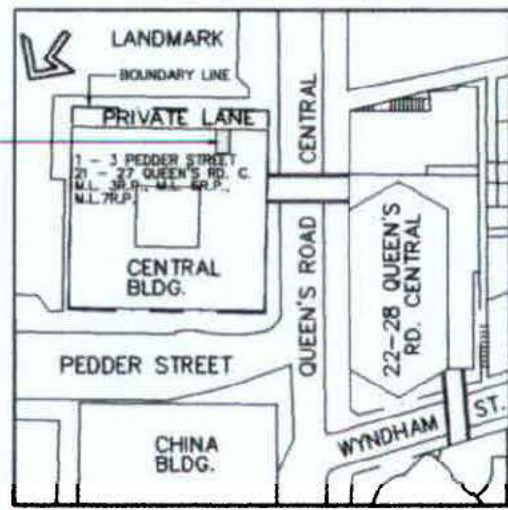


G/F PART PLAN

M/N 785234

LEGEND :
 AREA DEDICATED FOR PUBLIC PASSAGE
 (DEDICATED AREA = 14.019 m²)

10/7/97
10/7/97
10/7/97



BLOCK PLAN SCALE 1 : 1500

10/7/97

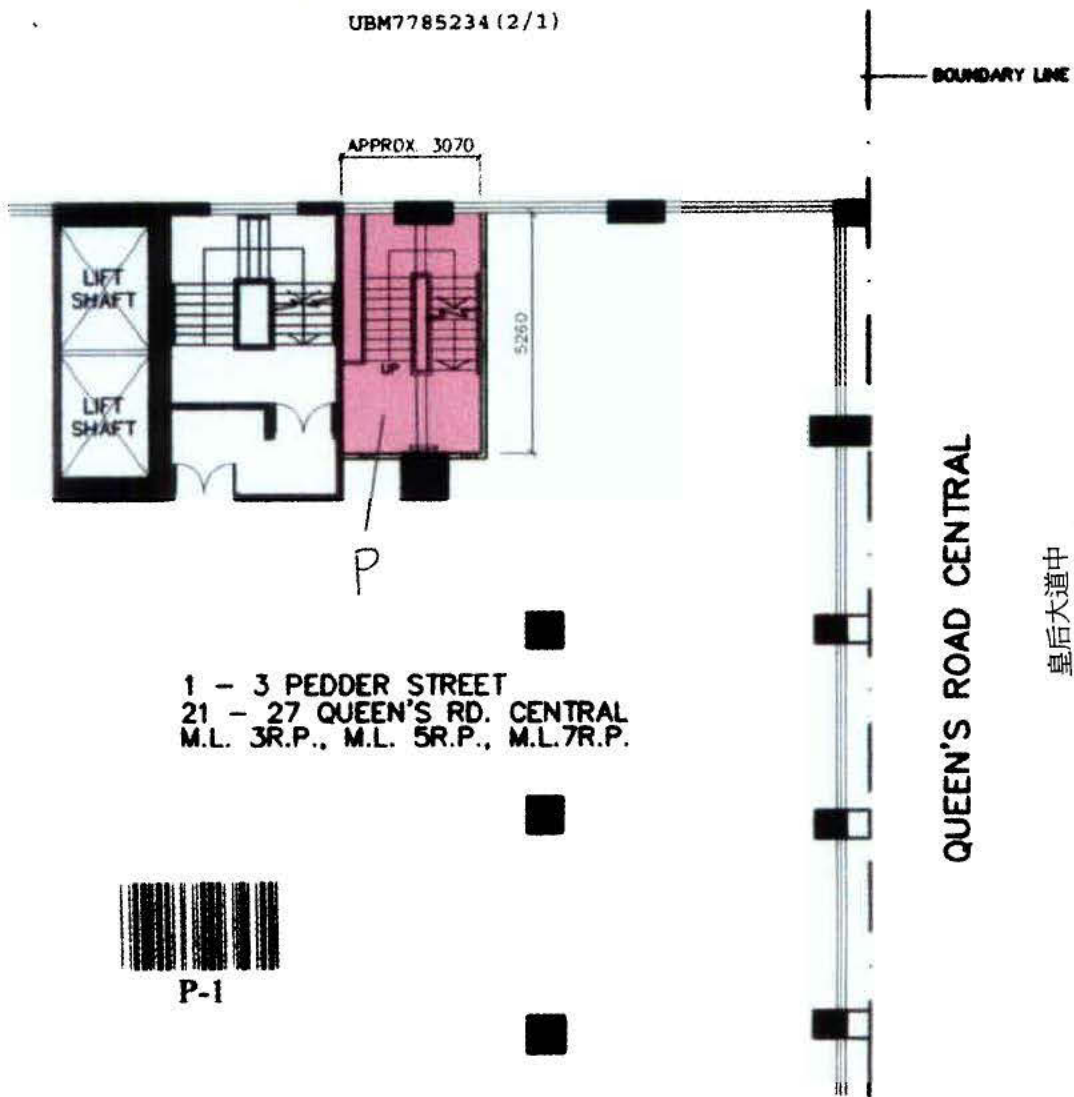
P&T Architects and Engineers Ltd
 25/F QIB Building
 190 Gloucester road HK
 Telephone: 5728570
 Fax: 852-8-8913834

**1 - 3 PEDDER STREET
 21 - 27 QUEEN'S RD. CENTRAL**
**G/F DEDICATED AREA
 FOR PUBLIC PASSAGE**

Scale	1:150	Drawing No.	D - 01
Date	MAY '96		
Job No.	2902	A	



UBM7785234 (2/1)



1 - 3 PEDDER STREET
21 - 27 QUEEN'S RD. CENTRAL
M.L. 3R.P., M.L. 5R.P., M.L. 7R.P.



P-1

1/F PART PLAN

M/N 7785234

1-3 PEDDER STREET AND 21-27 QUEEN'S ROAD CENTRAL, H. K.

香港畢打街 1-3 號, 皇后大道中 21-27 號

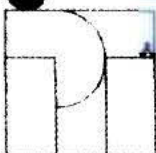
LEGEND :

 AREA DEDICATED FOR PUBLIC PASSAGE
(DESIGNATED AREA = 15,900 m²)

Richard



1998 SEP 16 3 20



P&T Architects
and Engineers Ltd

25/F 606 Building
100 Gloucester road HK
Telephone: 5708870
Fax: 502-5-091303A

1 - 3 PEDDER STREET
21 - 27 QUEEN'S RD. CENTRAL

1/F DEDICATED AREA
FOR PUBLIC PASSAGE

Scale

1:150

Date

MAY '96

Job No.

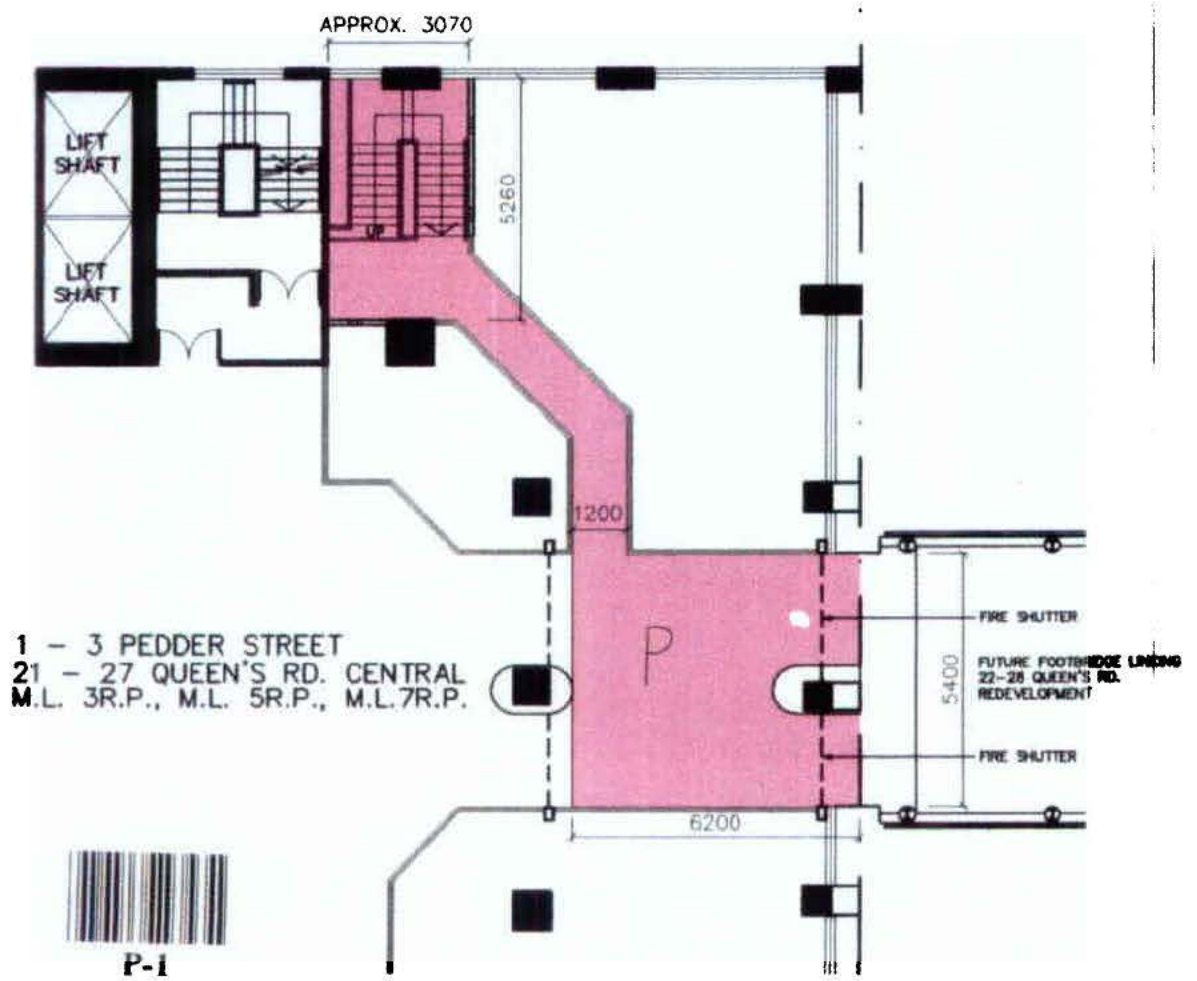
2902

Drawing No.

D - 02



UBM7785234 (3/1)



1 - 3 PEDDER STREET
21 - 27 QUEEN'S RD. CENTRAL
M.L. 3R.P., M.L. 5R.P., M.L. 7R.P.



P-1

2/F PART PLAN

M/N 7785234

1-3 PEDDER STREET AND 21-27 QUEEN'S ROAD CENTRAL, H. K.

香港畢打街 1-3 號, 皇后大道中 21-27 號

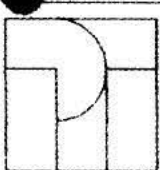
LEGEND :

AREA DEDICATED FOR PUBLIC PASSAGE
(INDICATES: APPROX. 55,797 m²)
MONG HONG

P

04 3 19 P 3 4

Richard



P&T Architects
and Engineers Ltd
25/F Old Building
180 Queen's Road HK
Telephone: 5788575
Fax: 582-8-8913534

1 - 3 PEDDER STREET
21 - 27 QUEEN'S RD. CENTRAL
2/F DEDICATED AREA
FOR PUBLIC PASSAGE

Scale 1:150
Date MAY '96
Job No. 2902

Drawing No. D - 03