

QUEEN'S ROAD CENTRAL



閣麟街
COCHRANE STREET



THE REMAINING PORTION
OF INLAND LOT NO.23
SITE AREA = 987.644 S.M.

PINK HATCHED BLACK
PINK HATCHED BLACK AREA
TO BE DEDICATED
FOR PUBLIC PEDESTRIAN
DEDICATED AREA = 68.091 S.M.

PINK CROSS HATCHED BLACK
PINK CROSS HATCHED BLACK AREA
TO BE DEDICATED FOR ACCESS BY
PERSONS WITH DISABILITIES
DEDICATED AREA = 15.944 S.M.

TOTAL DEDICATED AREA AT LOWER GROUND FLOOR = 84.035 S.M.

100 QUEEN'S ROAD CENTRAL, H.K. 香港皇后大道中 100 號

LOWER GROUND FLOOR PLAN
100 QUEEN'S ROAD CENTRAL, HONG KONG

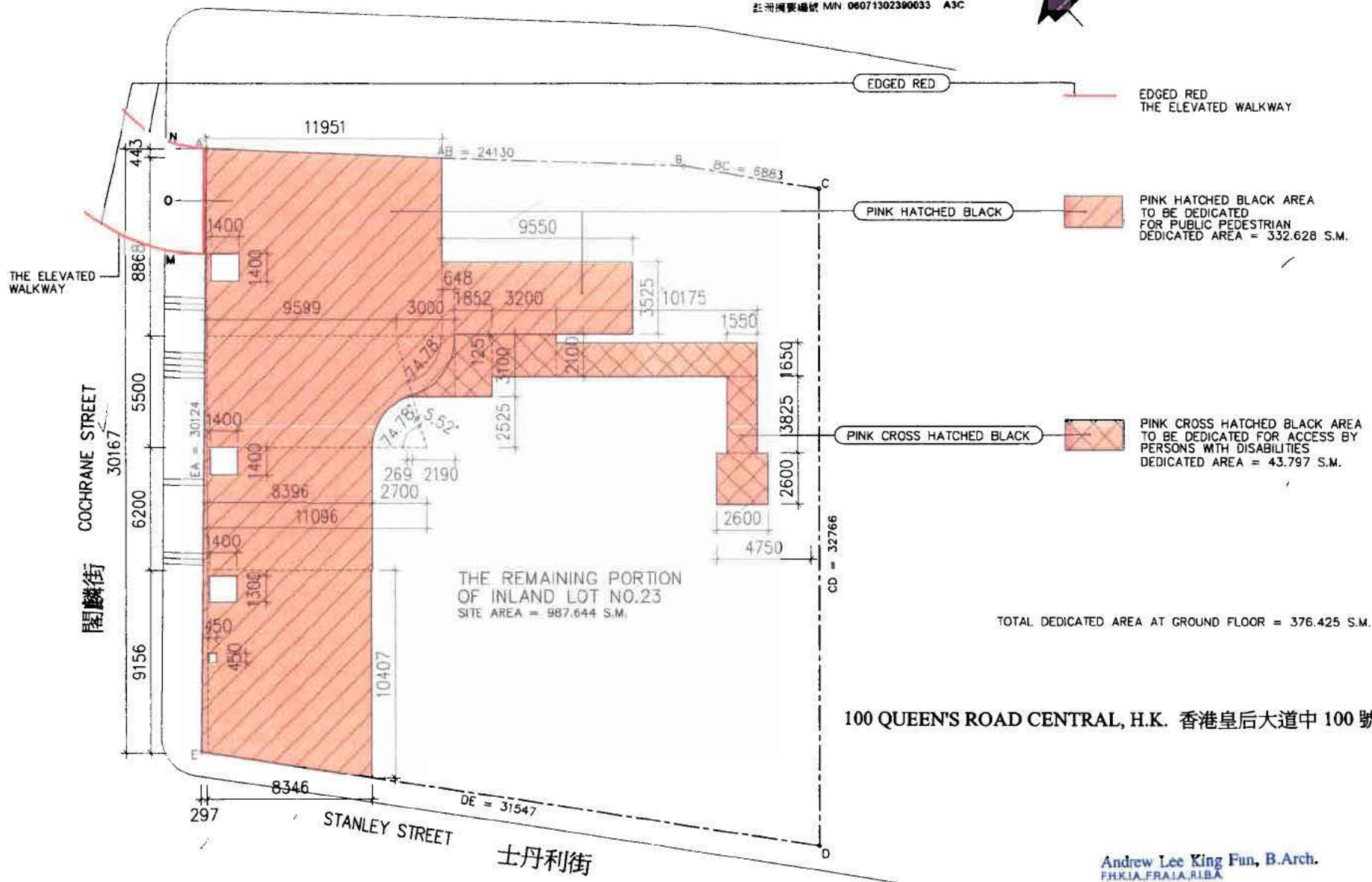
Andrew Lee King Fun, B.Arch.
F.R.K.I.A., F.R.A.I.A., R.I.B.A.

Authorized Person - Architect

QUEEN'S ROAD CENTRAL



註冊樓宇編號 MN 06071302390033 A3C



GROUND FLOOR PLAN
100 QUEEN'S ROAD CENTRAL, HONG KONG

100 QUEEN'S ROAD CENTRAL, H.K. 香港皇后大道中 100 號

Andrew Lee King Fun, B.Arch.
F.H.K.I.A., F.R.A.I.A., R.I.B.A.

Authorized Person - Architect