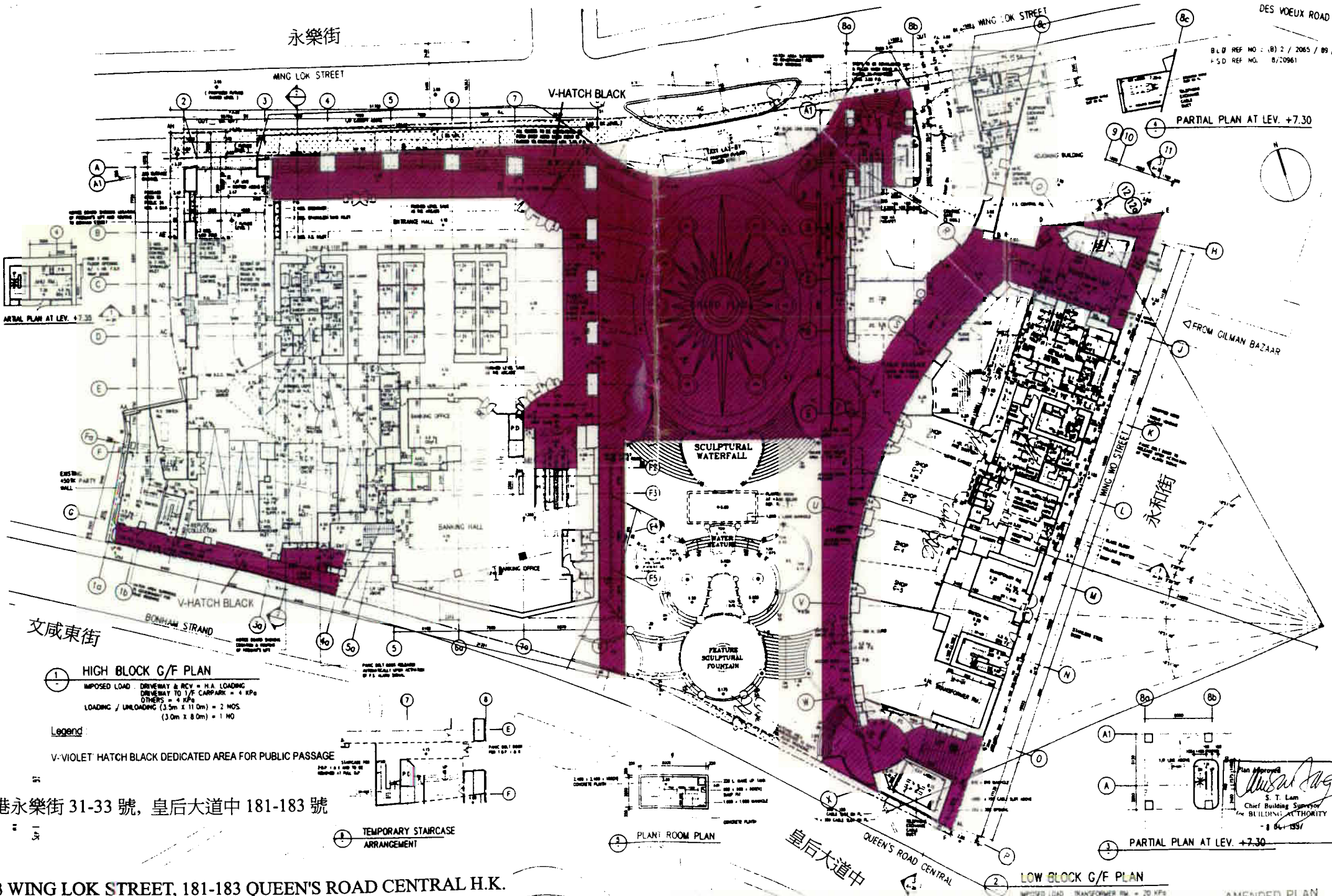


B.L.U. REF. NO.: (B) 2 / 2065 / 09 /
 P.S.D. REF. NO.: B/20961



PARTIAL PLAN AT LEV. +7.30

AIRIAL PLAN AT LEV. +7.35

PARTIAL PLAN AT LEV. +7.30

文咸東街

永和街

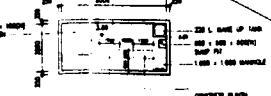
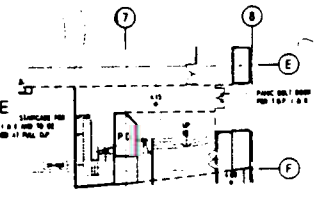
皇后大道中

1 HIGH BLOCK G/F PLAN
 IMPOSED LOAD DRIVEWAY & RCV = H.A. LOADING
 DRIVEWAY TO 1/2 CARPARK = 4 KPa
 OTHERS = 4 KPa
 LOADING / UNLOADING (3.5m x 11.0m) = 2 NOS.
 (3.0m x 8.0m) = 1 NO

Legend:

V-VIOLET HATCH BLACK DEDICATED AREA FOR PUBLIC PASSAGE

香港永樂街 31-33 號, 皇后大道中 181-183 號



TEMPORARY STAIRCASE ARRANGEMENT

PLAN: ROOM PLAN

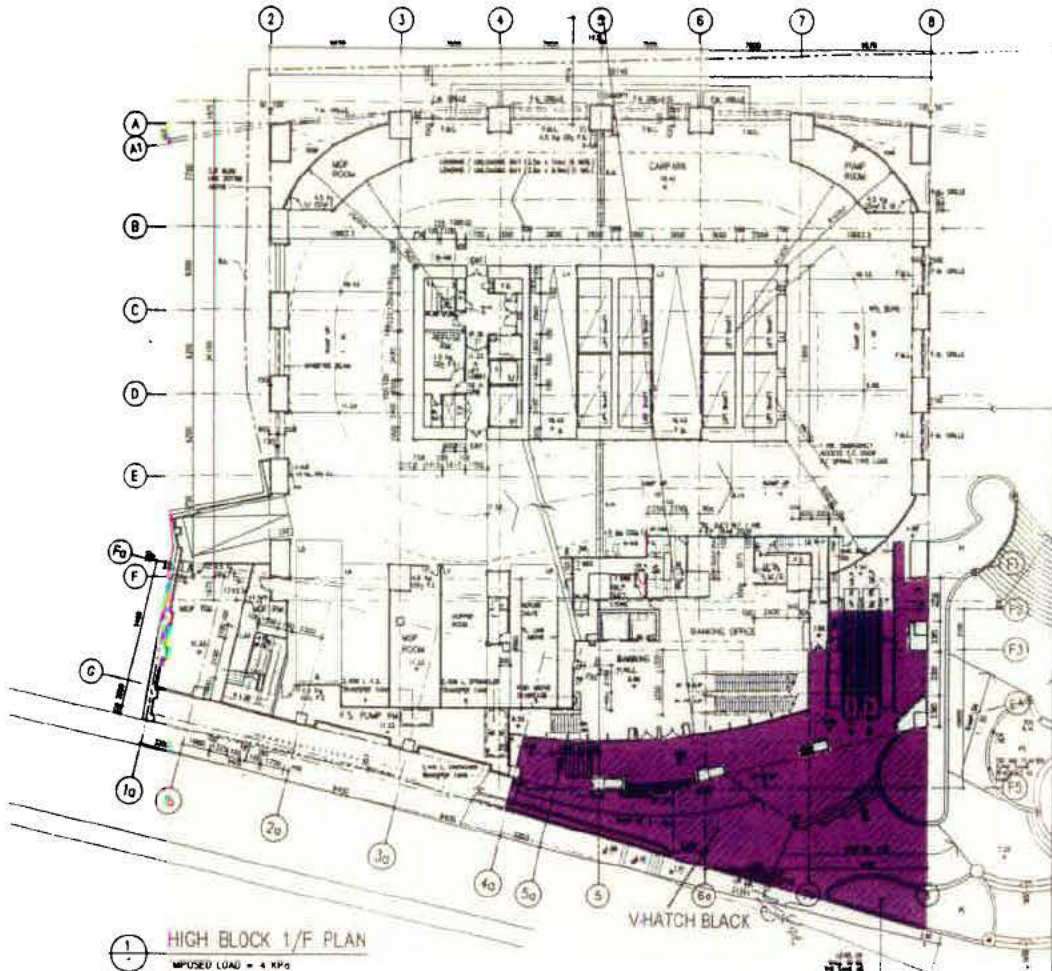
LOW BLOCK G/F PLAN

IMPOSED LOAD TRANSFORMER RM = 20 KPa
 OTHERS = 5 KPa

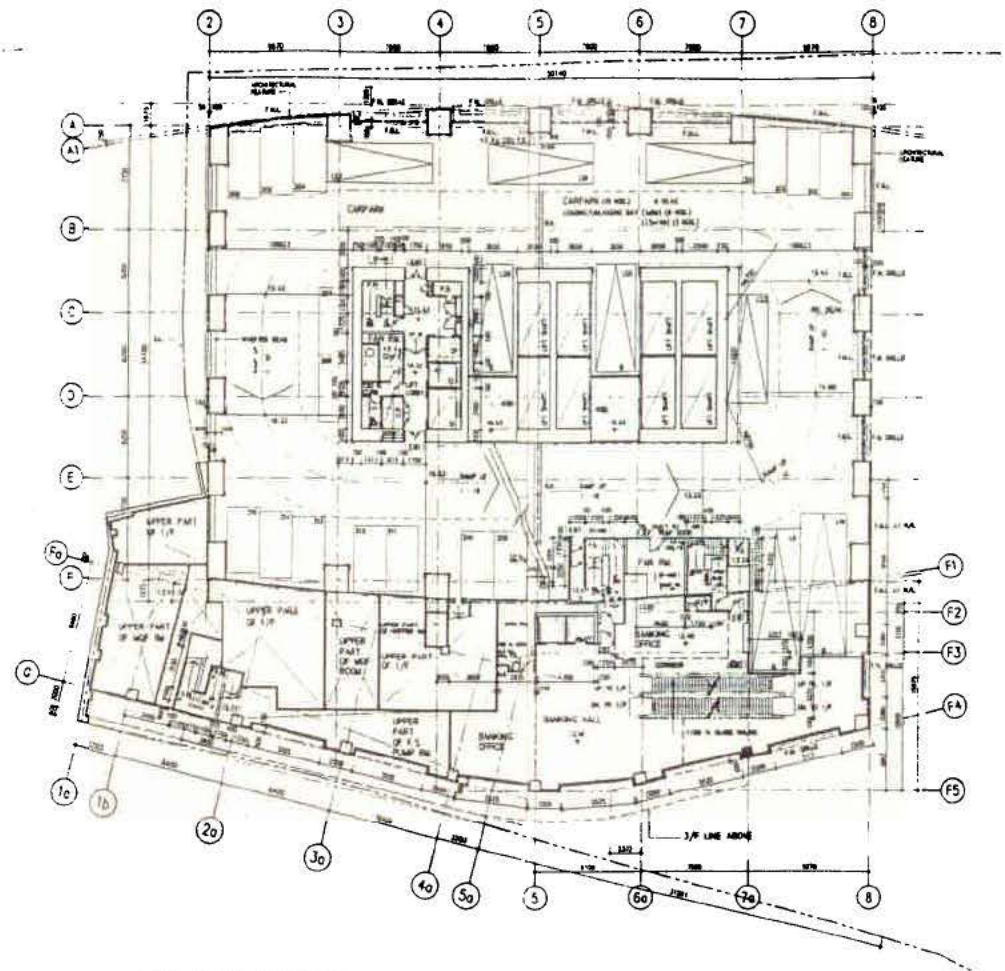
31-33 WING LOK STREET, 181-183 QUEEN'S ROAD CENTRAL H.K.

AMENDED PLAN

黃惠庭建築 HSIEN YIEH ARCHITECTS & ASSOCIATES LTD. 10/F, 100, QUEEN'S ROAD CENTRAL, HONG KONG	PROJECT PROPOSED COMMERCIAL DEVELOPMENT LDC - PROJECT H-3 WING LOK ST. QUEEN'S ROAD CENTRAL	DRAWN BY: J.H. CHECKED BY: C.C. DATE: 8-11-1997	REVISIONS DATE: 13-12-1992 22-11-1995 1-8-1996	8-3-1997 1-8-1997	TITLE GROUND FLOOR PLAN	NO. 890602
		PLAN APPROVED S. T. Lam Chief Building Supervisor for BUILDING AUTHORITY 18/04/1997	SCALE: 1:200 PLOT NO.: NS/G-01/01/001/002	DATE: A-09		



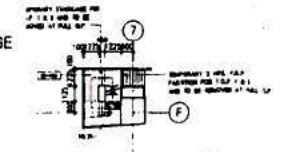
1 HIGH BLOCK 1/F PLAN
 IMPOSED LOAD = 4 kPa



2 HIGH BLOCK 2/F PLAN
 IMPOSED LOAD = 4 kPa

Legend

V: VIOLET HATCH BLACK DEDICATED AREA FOR PUBLIC PASSAGE



3 TEMPORARY STAIRCASE ARRANGEMENT

31-33 WING LOK STREET, 181-183 QUEEN'S ROAD CENTRAL H.K.

香港永樂街 31-33 號, 皇后大道中 181-183 號

Chief Building Supervisor
 S. T. Lam
 for BUILDING AUTHORITY

AMENDED PLAN

黃業輝建築師有限公司 HSIEN YIEN ARCHITECTS & ASSOCIATES LTD. 187-189, PRINCE OF WALE STREET, HONG KONG	PROJECT PROPOSED COMMERCIAL DEVELOPMENT LDC - PROJECT H-3 WING LOK ST. QUEEN'S ROAD CENTRAL	DRAWN BY: J.L.	CHECKED BY: C.C.	DATE: 8-22-1997	PERMITTED DATE: 6-3-1997	TITLE: HIGH BLOCK - 1/F & 2/F PLAN	NO: 890602
		SCALE: 1:200	DATE: 11-13-1995	DATE: 1-8-1997	DATE: 12-11-1995	DATE: 1-8-1996	SHEET: A-15