

BLOCK PLAN

Sd.
For and on behalf of
The Bank of East Asia, Ltd.

Sd.
For and on behalf of
Quality Investment Ltd.

AREA TO BE DEDICATED

香港告士打道256號-257號及波斯富街2-16號
256-257 Gloucester Road & 2-16 Percival Street

Annexure to Memorial No. **5159351**



**P&T Architects
and Engineers Ltd**

25/F OTB Building
160 Gloucester Road HK
Telephone: 5-758575
Fax 852-5 8913834

PROJECT
OFFICE / COMMERCIAL DEVELOPMENT

256 - 257 GLOUCESTER RD.
2 - 16 PERCIVAL STREET.

Scale 1:400

Date 4/71

Job No. 2286

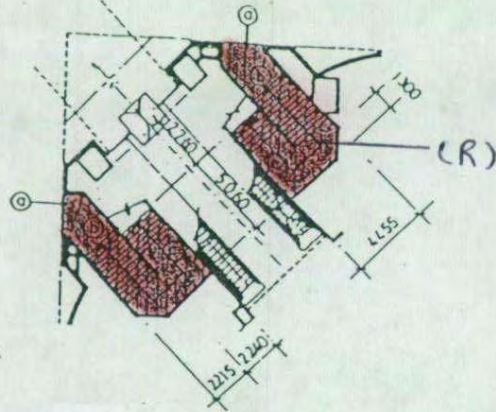
Drawing No.

CI/1-2A

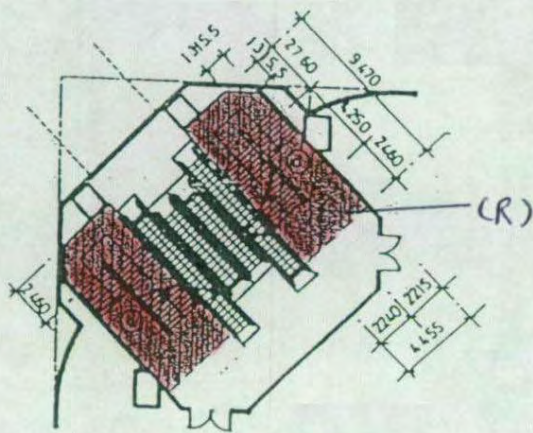


UBM5382009 (1/1)

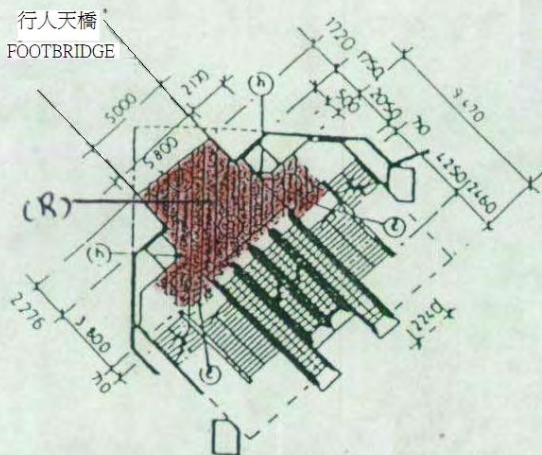
PERCIVAL STREET 波斯富街



GROUND FLOOR 地下



UPPER G. FLOOR 地下高層



1ST Floor 一樓

Annexure to Memorial No. **5382009**

TOTAL DEDICATED AREA :	
GRD. FL.	= 56.714 M ²
UPPER G. FL.	= 82.648 "
1ST FL.	= 44.358 "
TOTAL	= 183.720 M²

DIAGRAMS & CALCULATIONS OF DEDICATED AREA
(FOR FOOTBRIDGE CONNECTION ONLY)

香港告士打道256-257號及波斯富街2-16號
256-257 Gloucester Road & 2-16 Percival Street HK

PROJECT OFFICE/COMMERCIAL DEVELOPMENT 256-257 GLOUCESTER RD. 2-16 PERCIVAL STREET	Scale 1:400 Date 4/91 Job No. 2286	Drawing No. C1/1-3
--	--	-----------------------