

Layman's Guide on Compliance with Fire Safety Directions - Supermarkets

Enquiries and technical assistance

For enquiries, please contact BD -

Postal address:

Buildings Department Headquarters,
North Tower,
West Kowloon Government Offices,
11 Hoi Ting Road, Yau Ma Tei,
Kowloon

Email address:

enquiry@bd.gov.hk

Hotline:

2626 1616 (handled by "1823")

Website:

www.bd.gov.hk

For enquiries concerning fire service installation and equipment of prescribed commercial premises, please contact Fire Services Department Building Improvement Support Centre -

Postal address:

3/F, Fire Services Department Mong Kok
Office Building,
42 Tai Kok Tsui Road, Kowloon

Email address:

fsdbisc@hkfsd.gov.hk

Hotline:

2272 9112



Reference materials



An introduction to the
Fire Safety
(Commercial Premises)
Ordinance Cap. 502



Fire Resisting
Construction in Buildings



Useful information for
complying with the Fire
Safety Directions/
Fire Safety Improvement
Directions



Introduction to the Fire
Services Department
Building Improvement
Support Centre



Mobile application for
Minor Works Control
System - Quick Guide
for Minor Works



Download on the
App Store



GET IT ON
Google Play

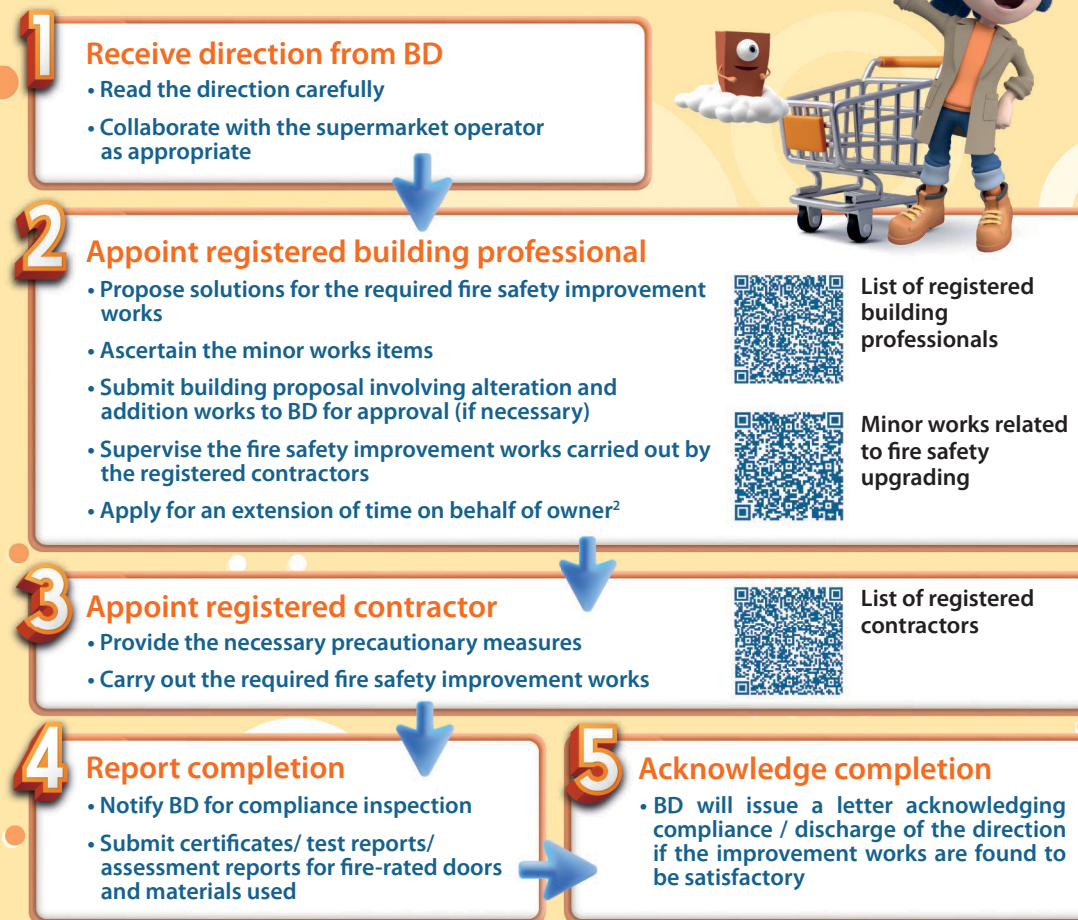


EXPLORE IT ON
AppGallery

Layman's Guide on Compliance with Fire Safety Directions - Supermarkets

Supermarket exceeding 230m² is considered as a Prescribed Commercial Premises under the Fire Safety (Commercial Premises) Ordinance (FS(CP)O) (Cap. 502), the Buildings Department (BD) may serve on the owner of the premises a fire safety direction¹ to comply with the fire safety construction requirements specified in:

- The Code of Practice for the Provision of Means of Escape in Case of Fire 1996;
- The Code of Practice for Fire Resisting Construction 1996; and
- The Code of Practice for Means of Access for Firefighting and Rescue 1995.



1. BD and the Fire Services Department (FSD) are the enforcement authorities of the FS(CP)O. BD will issue Fire Safety Directions (FSDNs) in relation to the planning, design and construction of buildings; while FSD will issue FSDNs in relation to fire service installation or equipment.


2. In case the required fire safety improvement works cannot be completed within the compliance period specified in the directions.

Common Fire Safety Requirements in Supermarkets



1 Exit routes

- Provide sufficient number and width according to the capacity #
- Ensure minimum clear height of 2000mm
- Keep exit routes clear of obstructions, e.g. turnstile, security device, cashier counter, bollard, roller shutter
- Provide illuminated directional and exit signs



4 Locking devices

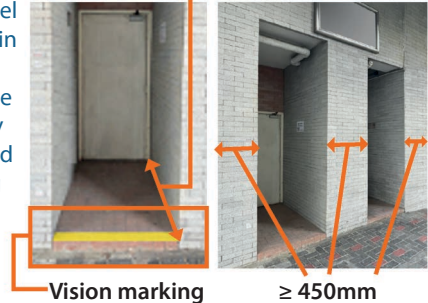
- Ensure locking device on exit door be readily opened from inside without use of a key
- Ensure electrical locking device on exit door be capable of automatic release upon actuation of fire alarm or in case of power failure






5 Final point of discharge of exit route

- Set back the exit door on ground floor from the line of drop in level
- Provide visible marking if drop in level is a single step
- Separate final point of discharge from adjoining exit route or any other accommodation with solid return of width $\geq 450\text{mm}$, along or project from that frontage




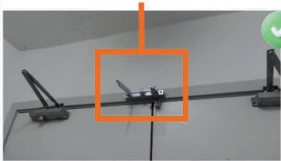

2 Travel distance

- Ensure distance of travel from any point in the supermarket to exit staircase or point of discharge to a street be within the limit #



3 Exit doors

- Install self-closing device to every exit door of sufficient width
- Ensure every door of a room with capacity over 30 people open in the direction of exit
- Provide vision panel to exit door of staircase/protected lobby/inner room
- Install checking device to regulate closing sequence of double leaf doors


6 Floor slab openings

- Surround slab opening with a vertical barrier $\geq 450\text{mm}$ and having a fire resistance period $\geq 1\text{hour}$



Vertical barrier $\geq 450\text{mm}$

7 At basement level

- Provide smoke outlets of sufficient number and size #




[°] The angle between the lines of direct distance from any point to two exits is at least 30°.
[Ⓢ] This applies to the supermarket where the exit door leading direct to an exit staircase or discharge to a street.
[#] Registered building professional should be consulted.