

# ESH User Guide UG1

## Generating PDF Drawings for Automatically Completing the Electronic Plan Index in ESH

# INTRODUCTION

ESH may compile electronic plan index automatically by detecting the required information on the plan if the information (case sensitive) is presented in the title block on the plan as follows:

- (a) The drawing title should be located under a caption of **“Drawing Title:”**;
- (b) The drawing number should be located under a caption of **“Drawing Number:”**;
- (c) The revision number should be located under a caption of **“Revision Number:”**; and
- (d) The information in (a), (b) and (c) above should be presented in separate rows and in machine readable text format.

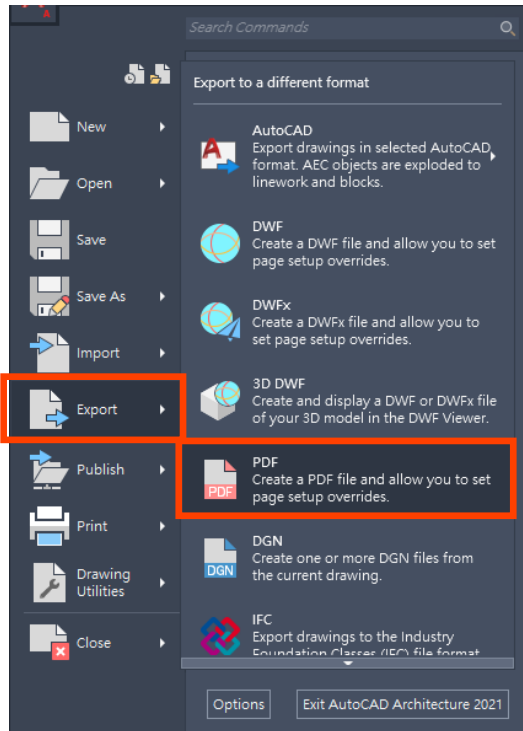
This user guide provides tips of generating machine readable text formatted PDF file from a common computer-aided design (CAD) software, Autodesk AutoCAD to satisfy the above requirements.

Note: Screenshot shown in this guideline are captured from Autodesk AutoCAD 2021 and are used for illustrative purpose only. For other CAD software, reference should be made to the user manual or instruction.

# Export PDF from CAD Drawing

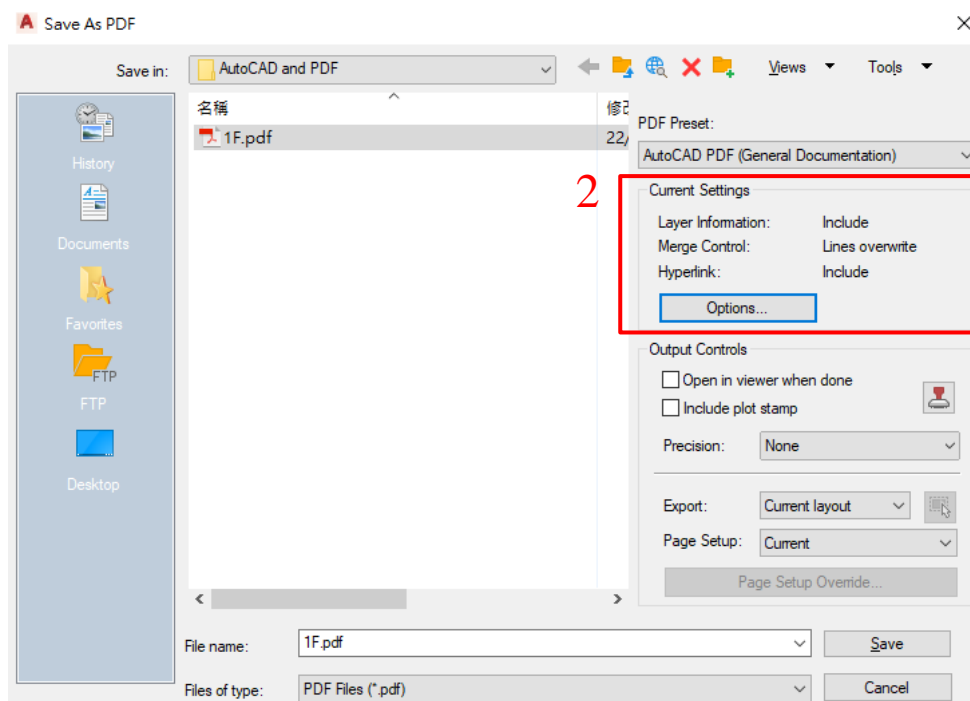
## Step 1

Choose “Export” > “PDF”



## Step 2

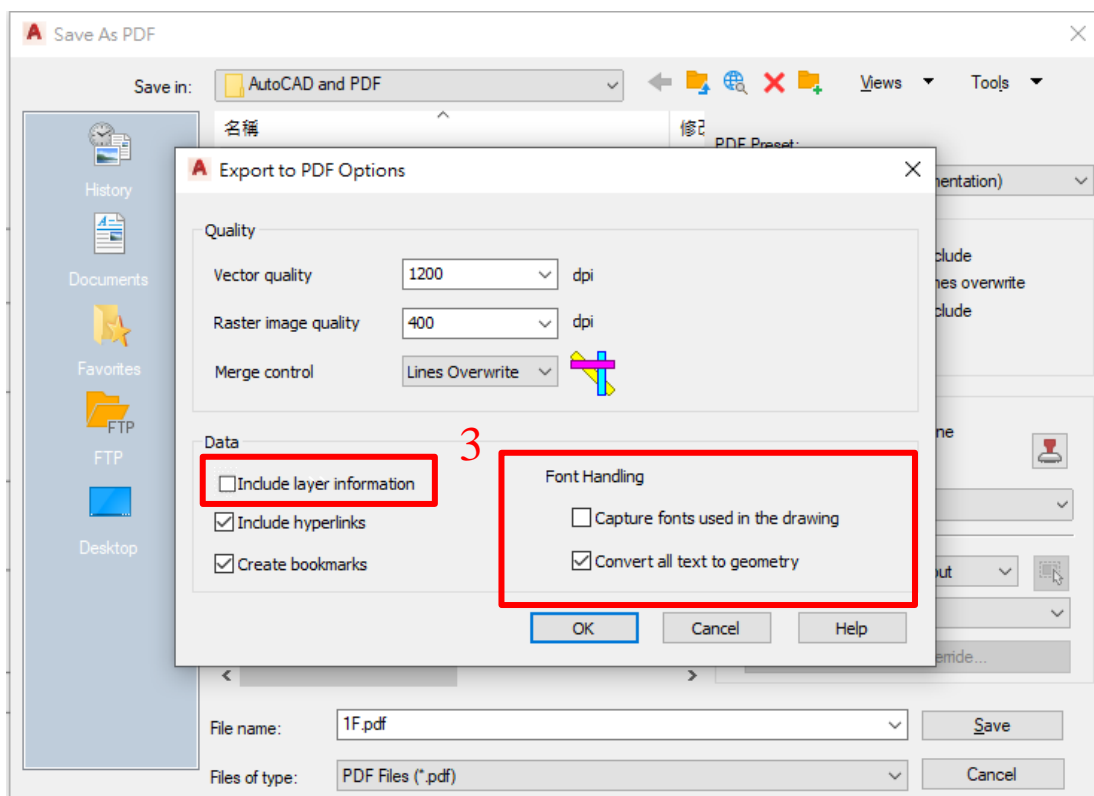
Select “Option” under “Current Settings” section



## Step 3

Select the following options under “Font Handling” section

- Uncheck “Capture fonts used in the drawing”
- Uncheck “Include layer information”
- Check “Convert all text to geometry”



After exported to a PDF formatted file, the text shown on the CAD drawing will be generated as machine readable text and detected by ESH if the specified requirements are followed.

## Reference

Templates of AutoCAD and PDF files of drawing frame for A0, A1 and A2 size are given in the following ESH webpage of BD website for reference.

<https://www.bd.gov.hk/en/resources/online-tools/electronic-submission-hub/index.html>