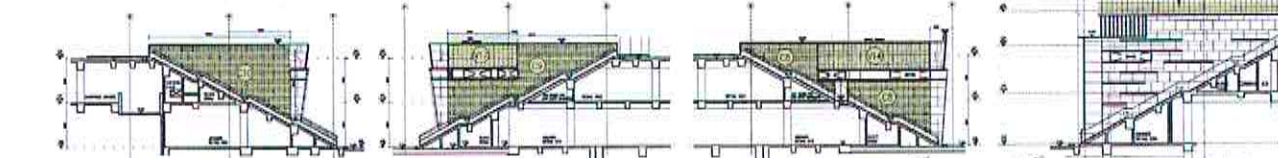
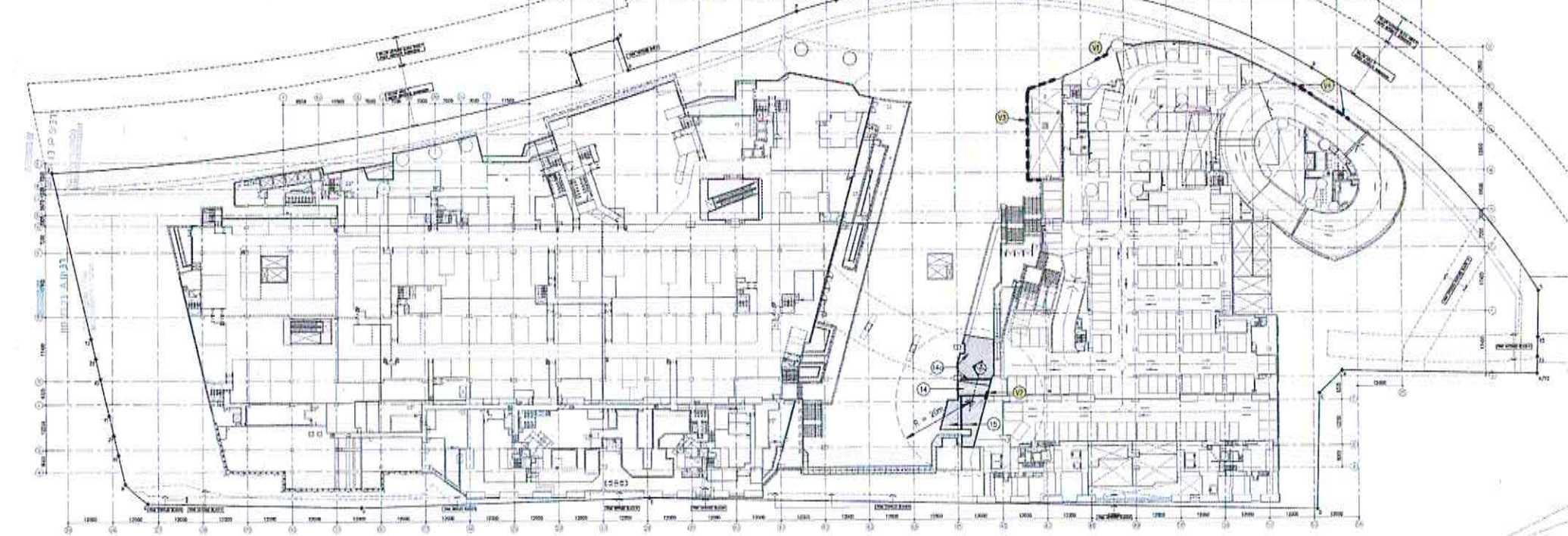


1 GREENERY LAYOUT AT PRIMARY ZONE - 2/F  
1:500



5 ELEVATION OF V.G. 1:300  
6 ELEVATION OF V.G. 1:300  
7 ELEVATION OF V.G. 1:300  
8 ELEVATION OF V.G. 1:300



2 GREENERY LAYOUT AT PRIMARY ZONE - 3/F  
1:500

**LEGEND**

- UNCOVERED GREENERY AREA
- COVERED GREENERY AREA
- WATER FEATURE GREENERY AREA
- VERTICAL GREENING
- IRRIGATION POINT

**CALCULATION OF SITE COVERAGE OF GREENERY AT 2/F (PRIMARY ZONE)**

COUNTABLE UNCOVERED AREA OF PLANTER/LAWN:

①	= 302191 m <sup>2</sup>	⑩	= 15,300 m <sup>2</sup>
②	= 170741 m <sup>2</sup>	⑪	= 27,265 m <sup>2</sup>
③	= 178,545 m <sup>2</sup>	⑫	= 16,723 m <sup>2</sup>
④	= 108,515 m <sup>2</sup>	⑬	= 29,580 m <sup>2</sup>
⑤	= 130,077 m <sup>2</sup>	⑭	= 33,000 m <sup>2</sup>
⑥	= 136,372 m <sup>2</sup>	⑮	= 293,393 m <sup>2</sup>
⑦	= 58,896 m <sup>2</sup>	⑯	= 33,900 m <sup>2</sup>
⑧	= 23,829 m <sup>2</sup>	⑰	= 42,445 m <sup>2</sup>
⑨	= 174,994 m <sup>2</sup>	⑱	= 206,328 m <sup>2</sup>
⑲	= 58,006 m <sup>2</sup>		
<b>TOTAL = 2,501,192 m<sup>2</sup></b>			

COUNTABLE COVERED AREA OF PLANTER/LAWN:

⑳	38,000 / 2 = 19,000 m <sup>2</sup>	㉑	21,221 / 2 = 10,611 m <sup>2</sup>
㉒	51,374 / 2 = 25,687 m <sup>2</sup>		
<b>TOTAL = 45,323 m<sup>2</sup></b>			

COUNTABLE AREA OF VERTICAL GREENING:

㉓	2,740W x (0.61 + 2,210W) / 2 = 3,876 m <sup>2</sup>		
㉔	(16,181W + 2,875W) - (7,714W + 2,250W) = 40,147 m <sup>2</sup>		
㉕	(8,305W + 6) + 2,804W = 5,587 m <sup>2</sup>		
㉖	(7,68W + 3,28W + 2) + 2,875W = 74,928 m <sup>2</sup>		
㉗	(8,170W + 2,03W) - (4,00W + 1,175W) = 9,714 m <sup>2</sup>		
㉘	(11,50W + 5,925W) - (1,50W + 1,50W + 3) = 11,387 m <sup>2</sup>		
㉙	(47,85W + 4,425W) - [(2,20W + 1,30W) + (4,025W + 2,80W) + 2,22 + 1,120W + 4,00W + 6,435W + (2,50 + 0,70W) + (0,075W + 4,425W + 2)] = 157,859 m <sup>2</sup>		
㉚	(2,450 + 1,920W + 1,401) = 6,060 m <sup>2</sup>		
㉛	(18,553W + 2,422W) = 47,454 m <sup>2</sup>		
㉜	(10,440 + 1,320W + 3,551) - (5,625W + 0,651) = 36,417 m <sup>2</sup>		
㉝	3,455W + 3,551 - 1,50W + 2,501 = 4,746 m <sup>2</sup>		
㉞	30,655W + 3,154W = 96,500 m <sup>2</sup>		
㉟	(5,12 + 3,18 + 6,165W + 3,55W) = 53,587 m <sup>2</sup>		
㊱	(12,40W + 2,330W) = 35,124 m <sup>2</sup>		
㊲	(1,020W + 2,475W) + 2,501W / 2 + (0,020W + 0,411W) + 2,475W + 10,020W + 2,875W - (3,120W + 1,675W) - (1,25W + 2,875W) = 43,014 m <sup>2</sup>		
㊳	(2,90W + 1,10W) x 2 + (2,075W + 4,320W) = 15,356 m <sup>2</sup>		
㊴	(7,600W + 2,524W) = 19,182 m <sup>2</sup>		
㊵	(5,80 + 4,80 + 1,50 + 2,00 + 0,50)W + 3,55W = 58,930 m <sup>2</sup>		
<b>TOTAL = 780,949 m<sup>2</sup></b>			

COUNTABLE AREA OF VERTICAL WIRE GREENING:

㊶	(2,135 + 0,55 + 2,32) x 1,333W + 2,875W = 57,253 m <sup>2</sup>		
㊷	4,25W + 1,60 = 5,950 m <sup>2</sup>		
㊸	(4,750W + 2,245W) + 2,304 = 20,375 m <sup>2</sup>		
㊹	5,170W + 3,101 = 16,027 m <sup>2</sup>		
㊺	(6,670W + 3,955W + 3,955W) + 2,511 - 0,66W = 42,362 m <sup>2</sup>		
㊻	4,78W + 3,16 = 14,794 m <sup>2</sup>		
㊼	5,08 + 3,46 = 18,310 m <sup>2</sup>		
㊽	(5,714 + 3,921W + 3,36W) / 2 + (1,80 + 1,770W + 2,22W) / 2 + (4,347 + 2,027W + 2,258W) / 2 + (3,011 + 5,531W + 4,48W) / 2 + 1,27W + 3,651 + 1,27W + 3,031W + 0,254W + 0,531 = 52,314 m <sup>2</sup>		
㊾	(4,770W + 1,321W + 0,06W) / 2 + (4,332 + 6,071W + 4,09W) / 2 + (5,523 + 1,027W + 4,018W) / 2 + (5,031 + 5,531W + 4,48W) / 2 + 1,27W + 4,131W + 1,27W + 3,031W + 1,27W + 1,431W + 0,254W + 0,531 = 56,079 m <sup>2</sup>		
㊿	(7,50 + 5,531W + 5,531W) / 2 + (5,531 + 5,031W + 4,48W) / 2 + (5,031 + 5,531W + 4,48W) / 2 + 0,94W + 2,501 + 0,85W + 5,551 + 0,67W + 3,031 + 0,254W + 0,531 = 64,308 m <sup>2</sup>		
<b>TOTAL = 535,532 m<sup>2</sup></b>			

COUNTABLE AREA OF WATER FEATURE:

①	38,893 / 2 = 19,247 m <sup>2</sup>		
<b>TOTAL = 19,247 m<sup>2</sup></b>			

AREA OF ALL PLANTER ERAS:

①	0,3375 x 10 = 3,375 m <sup>2</sup>		
②	1,333 x 1 = 1,333 m <sup>2</sup>		
③	0,562 x 4 = 2,248 m <sup>2</sup>		
<b>TOTAL = 12,956 m<sup>2</sup></b>			

AREA OF SITE COVERAGE OF GREENERY AT 2/F (PRIMARY ZONE):  
= (2,501,192 + 45,323 + 780,949 + 39,322 + 29,247) - 12,956 = 3,553,127 m<sup>2</sup>

**CALCULATION OF SITE COVERAGE OF GREENERY AT 3/F (PRIMARY ZONE)**

COUNTABLE UNCOVERED AREA OF PLANTER/LAWN:

①	= 26,259 m <sup>2</sup>		
②	= 98,195 m <sup>2</sup>		
<b>TOTAL = 124,454 m<sup>2</sup></b>			

COUNTABLE COVERED AREA OF PLANTER/LAWN:

③	(99,281 + 8,560) / 2 = 53,971 m <sup>2</sup>		
<b>TOTAL = 53,971 m<sup>2</sup></b>			

COUNTABLE AREA OF VERTICAL GREENING:

④	3,310W + 0,675W = 2,234 m <sup>2</sup>		
⑤	2,00W + 0,475W = 0,95 m <sup>2</sup>		
⑥	(7,251 + 1,473 + 23,305 + 5,11W) + 0,819W = 30,500 m <sup>2</sup>		
⑦	(1,281 + 1,047W) + 6,700W / 2 + (0,728 + 0,355W) + 6,500W / 2 = 11,419 m <sup>2</sup>		
<b>TOTAL = 45,193 m<sup>2</sup></b>			

AREA OF SITE COVERAGE OF GREENERY AT 3/F (PRIMARY ZONE):  
= 124,454 + 53,971 + 45,193 = 223,617 m<sup>2</sup>

**TOTAL GREENERY COVERAGE AT PRIMARY ZONE:**  
(UNDER BUILDING PLANNING REGULATION)  
= TOTAL GREENERY AREA (INCL. WATER FEATURE & VERTICAL GREENERY WALL) AT PRIMARY ZONE / SITE AREA x 100%  
= (2,476,821 + 690,543 + 3,553,127 + 223,617) / 40,410,754 x 100%  
= 6,943,108 / 40,410,754 x 100%  
= 17.05% (>15%)

**TOTAL GREENERY COVERAGE AT PRIMARY ZONE:**  
(UNDER IFAC CONDITION)  
= TOTAL GREENERY AREA (INCL. WATER FEATURE & VERTICAL GREENERY WALL) AT PRIMARY ZONE / SITE AREA x 100%  
= (2,476,821 + 690,543 + 3,553,127 + 223,617) / 42,870,00 x 100%  
= 6,943,108 / 42,870,00 x 100%  
= 16.19% (>15%)

Statement II: The works shown on these plans are TYPE II WORKS (general building work) in respect of which the Building Authority's consent is applied for.

**AMENDED PLAN**

Project: Jubilee Year Investments Limited  
2/F & 3/F of Jubilee Year Investments Limited  
100 Yee Hong Street, Tsim Sha Tsui, Kowloon, Hong Kong  
Tel: (852) 2119 8888  
Fax: (852) 2119 8889

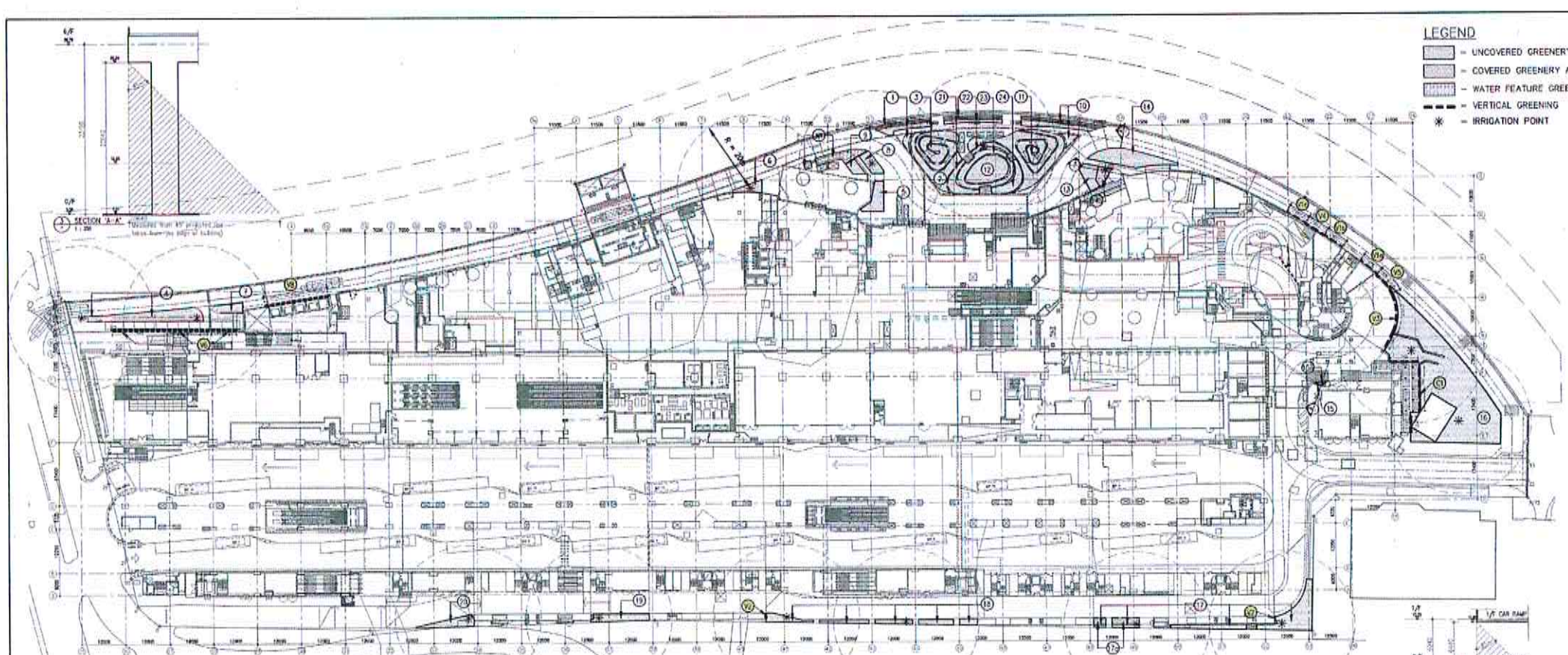
Architect: YIM YIP YIP architects & interior architects  
100 Yee Hong Street, Tsim Sha Tsui, Kowloon, Hong Kong  
Tel: (852) 2119 8888  
Fax: (852) 2119 8889

West Rail Tsuen Wan West Station  
TWS Bayside Property Development  
Tsuen Wan Town Lot No. 401

Scale: 1:500  
Date: 4/20/18

**GREENERY COVERAGE CALCULATION (SHEET 2 OF 3)**

Prepared by: [Signature]  
Checked by: [Signature]  
Date: 5 DEC 2017



**LEGEND**

- = UNCOVERED GREENERY AREA
- = COVERED GREENERY AREA
- ▨ = WATER FEATURE GREENERY AREA
- = VERTICAL GREENING
- \* = IRRIGATION POINT

**CALCULATION OF SITE COVERAGE OF GREENERY AT G/F (MTR FLOOR) (PRIMARY ZONE)**

COUNTABLE UNCOVERED AREA OF PLANTER/LAWN:

①	= 34,853 m <sup>2</sup>	⑪	= 20,062 m <sup>2</sup>
②	= 84,196 m <sup>2</sup>	⑫	= 74,109 m <sup>2</sup>
③	= 80,446 m <sup>2</sup>	⑬	= 3,638 m <sup>2</sup>
④	= 23,310 m <sup>2</sup>	⑭	= 842,992 m <sup>2</sup>
⑤	= 30,557 m <sup>2</sup>	⑮	= 117,787 m <sup>2</sup>
⑥	= 15,011 m <sup>2</sup>	⑯	= 63,654 m <sup>2</sup>
⑦	= 18,441 m <sup>2</sup>	⑰	= 20,652 m <sup>2</sup>
⑧	= 20,687 m <sup>2</sup>	⑱	= 29,005 m <sup>2</sup>
⑨	= 12,843 m <sup>2</sup>	⑲	= 25,178 m <sup>2</sup>
⑩	= 45,916 m <sup>2</sup>	⑳	= 34,916 m <sup>2</sup>
⑪	= 163,173 m <sup>2</sup>	㉑	= 42,070 m <sup>2</sup>
⑫	= 67,054 m <sup>2</sup>	㉒	= 27,727 m <sup>2</sup>
<b>TOTAL = 1,445,171 m<sup>2</sup></b>			

COUNTABLE COVERED AREA OF PLANTER/LAWN:

⑬	= 7,047 m <sup>2</sup>
⑭	= 0,014 m <sup>2</sup>
⑮	= 9,520 m <sup>2</sup>
<b>TOTAL = 17,581 m<sup>2</sup></b>	

COUNTABLE AREA OF VERTICAL GREENING:

①	= 87,195 m <sup>2</sup>
②	= 82,805 m <sup>2</sup>
③	= 87,315 m <sup>2</sup>
④	= 19,230 m <sup>2</sup>
⑤	= 220,835 m <sup>2</sup>
⑥	= 15,938 m <sup>2</sup>
⑦	= 9,111 m <sup>2</sup>
⑧	= 31,523 m <sup>2</sup>
⑨	= 92,173 m <sup>2</sup>
<b>TOTAL = 705,560 m<sup>2</sup></b>	

COUNTABLE AREA OF VERTICAL WIRE GREENING:

⑩	= 69,350 m <sup>2</sup>
<b>TOTAL = 89,360 m<sup>2</sup></b>	

COUNTABLE AREA OF WATER FEATURE:

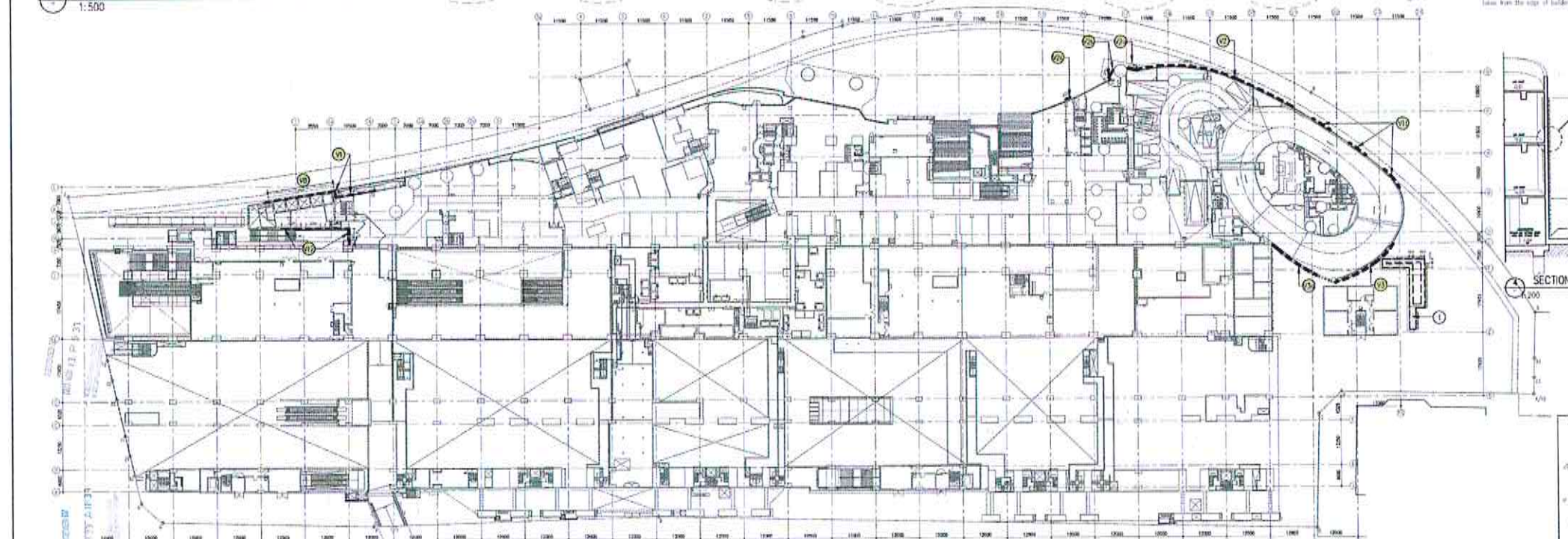
⑪	= 16,729 m <sup>2</sup>
<b>TOTAL = 16,729 m<sup>2</sup></b>	

**AREA OF SITE COVERAGE OF GREENERY AT G/F (MTR FLOOR) (PRIMARY ZONE):**

= 1,445,171 + 17,581 + 705,560 + 89,360 + 16,729

**= 2,436,421 m<sup>2</sup>**

1 GREENERY LAYOUT AT PRIMARY ZONE - G/F (MTR FLOOR)  
1:500



**CALCULATION OF SITE COVERAGE OF GREENERY AT 1/F (UPPER MTR FLOOR) (PRIMARY ZONE)**

COUNTABLE UNCOVERED AREA OF PLANTER/LAWN:

①	= 21,776 m <sup>2</sup>
<b>TOTAL = 21,776 m<sup>2</sup></b>	

COUNTABLE AREA OF VERTICAL GREENING:

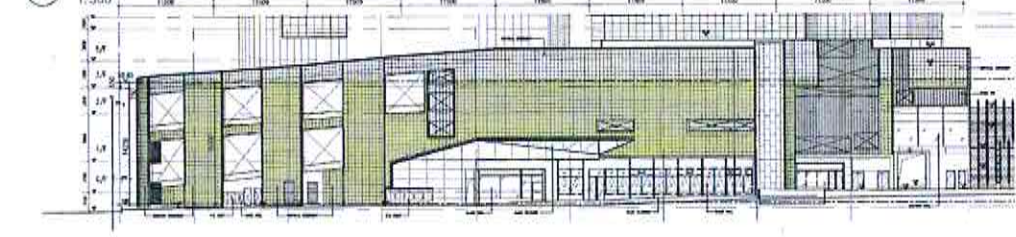
①	= 64,246 m <sup>2</sup>
②	= 298,430 m <sup>2</sup>
③	= 14,408 m <sup>2</sup>
④	= 18,440 m <sup>2</sup>
⑤	= 35,796 m <sup>2</sup>
⑥	= 23,903 m <sup>2</sup>
⑦	= 93,006 m <sup>2</sup>
⑧	= 18,623 m <sup>2</sup>
⑨	= 81,798 m <sup>2</sup>
<b>TOTAL = 662,767 m<sup>2</sup></b>	

**AREA OF SITE COVERAGE OF GREENERY AT 1/F (UPPER MTR FLOOR) (PRIMARY ZONE):**

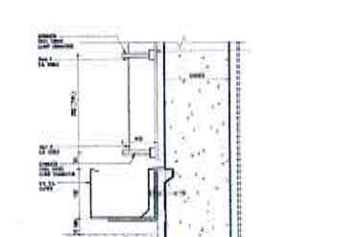
= 21,776 + 662,767

**= 684,543 m<sup>2</sup>**

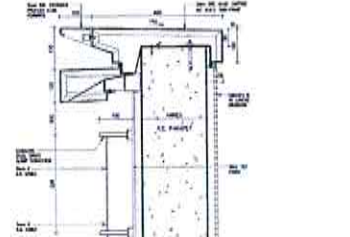
2 GREENERY LAYOUT AT PRIMARY ZONE - 1/F (UPPER MTR FLOOR)  
1:500



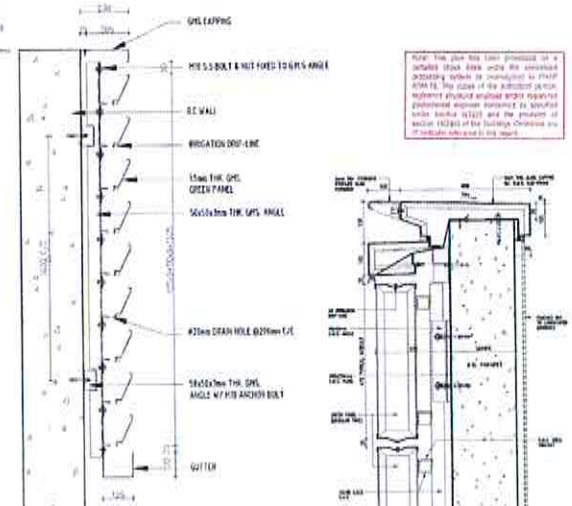
3 ELEVATION OF VERTICAL GREENERY  
1:500



4 TYPICAL VERTICAL GREENERY WALL, CLIMBING PLANTS ON VERTICAL FRAME DETAIL  
1:7.5



5 TYPICAL VERTICAL GREENERY WALL, CLIMBING PLANTS ON VERTICAL FRAME DETAIL  
1:7.5



6 TYPICAL VERTICAL GREEN PANEL TRAY TYPE DETAIL  
1:10

**REVISIONS**

No.	Date	Description
1	10-08-2017	ISSUE FOR PERMITTING
2	11-08-2017	REVISED
3	11-08-2017	REVISED
4	11-08-2017	REVISED
5	11-08-2017	REVISED
6	11-08-2017	REVISED
7	11-08-2017	REVISED
8	11-08-2017	REVISED
9	11-08-2017	REVISED
10	11-08-2017	REVISED
11	11-08-2017	REVISED
12	11-08-2017	REVISED
13	11-08-2017	REVISED
14	11-08-2017	REVISED
15	11-08-2017	REVISED
16	11-08-2017	REVISED
17	11-08-2017	REVISED
18	11-08-2017	REVISED
19	11-08-2017	REVISED
20	11-08-2017	REVISED
21	11-08-2017	REVISED
22	11-08-2017	REVISED
23	11-08-2017	REVISED
24	11-08-2017	REVISED
25	11-08-2017	REVISED
26	11-08-2017	REVISED
27	11-08-2017	REVISED
28	11-08-2017	REVISED
29	11-08-2017	REVISED
30	11-08-2017	REVISED
31	11-08-2017	REVISED
32	11-08-2017	REVISED
33	11-08-2017	REVISED
34	11-08-2017	REVISED
35	11-08-2017	REVISED
36	11-08-2017	REVISED
37	11-08-2017	REVISED
38	11-08-2017	REVISED
39	11-08-2017	REVISED
40	11-08-2017	REVISED
41	11-08-2017	REVISED
42	11-08-2017	REVISED
43	11-08-2017	REVISED
44	11-08-2017	REVISED
45	11-08-2017	REVISED
46	11-08-2017	REVISED
47	11-08-2017	REVISED
48	11-08-2017	REVISED
49	11-08-2017	REVISED
50	11-08-2017	REVISED
51	11-08-2017	REVISED
52	11-08-2017	REVISED
53	11-08-2017	REVISED
54	11-08-2017	REVISED
55	11-08-2017	REVISED
56	11-08-2017	REVISED
57	11-08-2017	REVISED
58	11-08-2017	REVISED
59	11-08-2017	REVISED
60	11-08-2017	REVISED
61	11-08-2017	REVISED
62	11-08-2017	REVISED
63	11-08-2017	REVISED
64	11-08-2017	REVISED
65	11-08-2017	REVISED
66	11-08-2017	REVISED
67	11-08-2017	REVISED
68	11-08-2017	REVISED
69	11-08-2017	REVISED
70	11-08-2017	REVISED
71	11-08-2017	REVISED
72	11-08-2017	REVISED
73	11-08-2017	REVISED
74	11-08-2017	REVISED
75	11-08-2017	REVISED
76	11-08-2017	REVISED
77	11-08-2017	REVISED
78	11-08-2017	REVISED
79	11-08-2017	REVISED
80	11-08-2017	REVISED
81	11-08-2017	REVISED
82	11-08-2017	REVISED
83	11-08-2017	REVISED
84	11-08-2017	REVISED
85	11-08-2017	REVISED
86	11-08-2017	REVISED
87	11-08-2017	REVISED
88	11-08-2017	REVISED
89	11-08-2017	REVISED
90	11-08-2017	REVISED
91	11-08-2017	REVISED
92	11-08-2017	REVISED
93	11-08-2017	REVISED
94	11-08-2017	REVISED
95	11-08-2017	REVISED
96	11-08-2017	REVISED
97	11-08-2017	REVISED
98	11-08-2017	REVISED
99	11-08-2017	REVISED
100	11-08-2017	REVISED

**AMENDED PLAN**

Station B: The works shown on these plans are TYPE II WORKS (general building work) in respect of which the Building Authority consent is applied for.

**Jubilee Year Investments Limited**

17021

**GREENERY COVERAGE CALCULATION (SHEET 1 OF 3)**

Scale: 1:500

DATE: 8/12/17

DESIGNED BY: [Signature]

CHECKED BY: [Signature]

FILE APPROVED BY: [Signature]

HKS Group Hong Kong Building Authority

5 DEC 2017

1	10-00-001	REVISION
2	10-00-002	REVISION
3	10-00-003	REVISION
4	10-00-004	REVISION
5	10-00-005	REVISION
6	10-00-006	REVISION
7	10-00-007	REVISION
8	10-00-008	REVISION
9	10-00-009	REVISION
10	10-00-010	REVISION
11	10-00-011	REVISION
12	10-00-012	REVISION
13	10-00-013	REVISION
14	10-00-014	REVISION
15	10-00-015	REVISION
16	10-00-016	REVISION
17	10-00-017	REVISION
18	10-00-018	REVISION
19	10-00-019	REVISION
20	10-00-020	REVISION
21	10-00-021	REVISION
22	10-00-022	REVISION
23	10-00-023	REVISION
24	10-00-024	REVISION
25	10-00-025	REVISION
26	10-00-026	REVISION
27	10-00-027	REVISION
28	10-00-028	REVISION
29	10-00-029	REVISION
30	10-00-030	REVISION
31	10-00-031	REVISION
32	10-00-032	REVISION
33	10-00-033	REVISION
34	10-00-034	REVISION
35	10-00-035	REVISION
36	10-00-036	REVISION
37	10-00-037	REVISION
38	10-00-038	REVISION
39	10-00-039	REVISION
40	10-00-040	REVISION
41	10-00-041	REVISION
42	10-00-042	REVISION
43	10-00-043	REVISION
44	10-00-044	REVISION
45	10-00-045	REVISION
46	10-00-046	REVISION
47	10-00-047	REVISION
48	10-00-048	REVISION
49	10-00-049	REVISION
50	10-00-050	REVISION
51	10-00-051	REVISION
52	10-00-052	REVISION
53	10-00-053	REVISION
54	10-00-054	REVISION
55	10-00-055	REVISION
56	10-00-056	REVISION
57	10-00-057	REVISION
58	10-00-058	REVISION
59	10-00-059	REVISION
60	10-00-060	REVISION
61	10-00-061	REVISION
62	10-00-062	REVISION
63	10-00-063	REVISION
64	10-00-064	REVISION
65	10-00-065	REVISION
66	10-00-066	REVISION
67	10-00-067	REVISION
68	10-00-068	REVISION
69	10-00-069	REVISION
70	10-00-070	REVISION
71	10-00-071	REVISION
72	10-00-072	REVISION
73	10-00-073	REVISION
74	10-00-074	REVISION
75	10-00-075	REVISION
76	10-00-076	REVISION
77	10-00-077	REVISION
78	10-00-078	REVISION
79	10-00-079	REVISION
80	10-00-080	REVISION
81	10-00-081	REVISION
82	10-00-082	REVISION
83	10-00-083	REVISION
84	10-00-084	REVISION
85	10-00-085	REVISION
86	10-00-086	REVISION
87	10-00-087	REVISION
88	10-00-088	REVISION
89	10-00-089	REVISION
90	10-00-090	REVISION
91	10-00-091	REVISION
92	10-00-092	REVISION
93	10-00-093	REVISION
94	10-00-094	REVISION
95	10-00-095	REVISION
96	10-00-096	REVISION
97	10-00-097	REVISION
98	10-00-098	REVISION
99	10-00-099	REVISION
100	10-00-100	REVISION

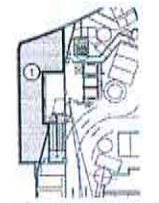
**LEGEND**

- UNCOVERED GREENERY AREA
- COVERED GREENERY AREA
- WATER FEATURE

**CALCULATION OF SITE COVERAGE OF GREENERY AT 5/F (OTHER ZONE)**

COUNTABLE AREA OF PLANTER/LAWN  
 ① = 154,820 m<sup>2</sup>  
 TOTAL = 154,820 m<sup>2</sup>

AREA OF SITE COVERAGE OF GREENERY AT 5/F (OTHER ZONE)  
 = 154,820 m<sup>2</sup>



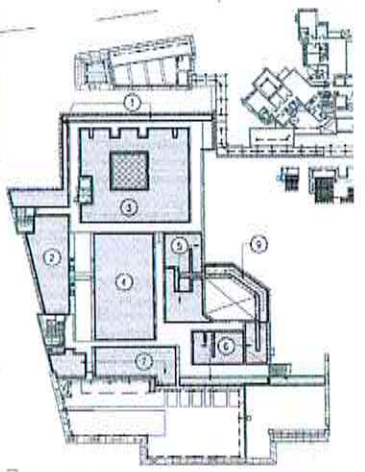
② GREENERY LAYOUT AT OTHER ZONE - 5/F  
1:500

**CALCULATION OF SITE COVERAGE OF GREENERY AT 7/F (OTHER ZONE)**

COUNTABLE AREA OF PLANTER/LAWN  
 ① = 10,442 m<sup>2</sup>  
 ② = 137,643 m<sup>2</sup>  
 ③ = 340,975 m<sup>2</sup>  
 ④ = 255,657 m<sup>2</sup>  
 ⑤ = 175,936 m<sup>2</sup>  
 ⑥ = 144,074 m<sup>2</sup>  
 ⑦ = 143,191 m<sup>2</sup>  
 TOTAL = 1,248,655 m<sup>2</sup>

COUNTABLE COVERED AREA OF WATER FEATURE:  
 ① = 32,176/2 = 16,088 m<sup>2</sup>  
 TOTAL = 16,088 m<sup>2</sup>

AREA OF SITE COVERAGE OF GREENERY AT 7/F (OTHER ZONE)  
 = 1,248,655 + 16,088  
 = 1,264,743 m<sup>2</sup>



④ GREENERY LAYOUT AT OTHER ZONE - 7/F  
1:500

**CALCULATION OF SITE COVERAGE OF GREENERY AT 6/F (OTHER ZONE)**

COUNTABLE AREA OF PLANTER/LAWN			
①	= 117,202 m <sup>2</sup>	⑤	= 23,735 m <sup>2</sup>
②	= 96,417 m <sup>2</sup>	⑥	= 24,562 m <sup>2</sup>
③	= 17,559 m <sup>2</sup>	⑦	= 49,134 m <sup>2</sup>
④	= 13,745 m <sup>2</sup>	⑧	= 44,750 m <sup>2</sup>
⑨	= 71,246 m <sup>2</sup>	⑩	= 57,930 m <sup>2</sup>
⑪	= 13,745 m <sup>2</sup>	⑪	= 47,293 m <sup>2</sup>
⑫	= 35,848 m <sup>2</sup>	⑫	= 106,996 m <sup>2</sup>
⑬	= 30,242 m <sup>2</sup>	⑬	= 33,969 m <sup>2</sup>
⑭	= 82,136 m <sup>2</sup>	⑭	= 18,891 m <sup>2</sup>
⑮	= 13,293 m <sup>2</sup>	⑮	= 33,221 m <sup>2</sup>
⑯	= 16,619 m <sup>2</sup>	⑯	= 33,226 m <sup>2</sup>
⑰	= 10,649 m <sup>2</sup>	⑰	= 66,516 m <sup>2</sup>
⑱	= 16,640 m <sup>2</sup>	⑱	= 62,117 m <sup>2</sup>
⑲	= 10,324 m <sup>2</sup>	⑲	= 22,374 m <sup>2</sup>
⑳	= 15,125 m <sup>2</sup>	㉑	= 109,912 m <sup>2</sup>
㉑	= 53,462 m <sup>2</sup>	㉑	= 44,133 m <sup>2</sup>
㉒	= 3,576 m <sup>2</sup>	㉒	= 43,910 m <sup>2</sup>
㉓	= 3,576 m <sup>2</sup>	㉓	= 42,177 m <sup>2</sup>
㉔	= 3,576 m <sup>2</sup>	㉔	= 30,536 m <sup>2</sup>
㉕	= 3,576 m <sup>2</sup>	㉕	= 110,272 m <sup>2</sup>
㉖	= 3,576 m <sup>2</sup>	㉖	= 130,949 m <sup>2</sup>
㉗	= 3,576 m <sup>2</sup>	㉗	= 14,524 m <sup>2</sup>
㉘	= 3,576 m <sup>2</sup>	㉘	= 138,391 m <sup>2</sup>
㉙	= 3,576 m <sup>2</sup>	㉙	= 156,966 m <sup>2</sup>
㉚	= 3,576 m <sup>2</sup>	㉚	= 23,103 m <sup>2</sup>
㉛	= 3,576 m <sup>2</sup>	㉛	= 23,103 m <sup>2</sup>
㉜	= 3,576 m <sup>2</sup>	㉜	= 23,103 m <sup>2</sup>
㉝	= 3,576 m <sup>2</sup>	㉝	= 23,103 m <sup>2</sup>
㉞	= 3,576 m <sup>2</sup>	㉞	= 23,103 m <sup>2</sup>
㉟	= 3,576 m <sup>2</sup>	㉟	= 23,103 m <sup>2</sup>
㊱	= 3,576 m <sup>2</sup>	㊱	= 23,103 m <sup>2</sup>
㊲	= 3,576 m <sup>2</sup>	㊲	= 23,103 m <sup>2</sup>
㊳	= 3,576 m <sup>2</sup>	㊳	= 23,103 m <sup>2</sup>
㊴	= 3,576 m <sup>2</sup>	㊴	= 23,103 m <sup>2</sup>
㊵	= 3,576 m <sup>2</sup>	㊵	= 23,103 m <sup>2</sup>
㊶	= 3,576 m <sup>2</sup>	㊶	= 23,103 m <sup>2</sup>
㊷	= 3,576 m <sup>2</sup>	㊷	= 23,103 m <sup>2</sup>
㊸	= 3,576 m <sup>2</sup>	㊸	= 23,103 m <sup>2</sup>
㊹	= 3,576 m <sup>2</sup>	㊹	= 23,103 m <sup>2</sup>
㊺	= 3,576 m <sup>2</sup>	㊺	= 23,103 m <sup>2</sup>
㊻	= 3,576 m <sup>2</sup>	㊻	= 23,103 m <sup>2</sup>
㊼	= 3,576 m <sup>2</sup>	㊼	= 23,103 m <sup>2</sup>
㊽	= 3,576 m <sup>2</sup>	㊽	= 23,103 m <sup>2</sup>
㊾	= 3,576 m <sup>2</sup>	㊾	= 23,103 m <sup>2</sup>
㊿	= 3,576 m <sup>2</sup>	㊿	= 23,103 m <sup>2</sup>
100	= 3,576 m <sup>2</sup>	100	= 23,103 m <sup>2</sup>
TOTAL = 4,263,432 m <sup>2</sup>			

AREA OF ALL PLANTER DRAINS AND MANHOLE COVERS  
 ① 0.940 x 31 = 29,440 m<sup>2</sup> ② 0.450 x 2 = 0,900 m<sup>2</sup> ③ 0.300 x 12 = 3,600 m<sup>2</sup>  
 ④ 0.490 x 51 = 24,950 m<sup>2</sup> ⑤ 0.700 x 2 = 1,400 m<sup>2</sup> ⑥ 0.700 x 4 = 2,800 m<sup>2</sup>  
 ⑦ 0.300 x 11 = 3,300 m<sup>2</sup> ⑧ 0.250 x 19 = 4,750 m<sup>2</sup> ⑨ 0.750 x 2,400 = 1,800 m<sup>2</sup>  
 TOTAL = 120,140 m<sup>2</sup>

AREA OF SITE COVERAGE OF GREENERY AT 6/F (OTHER ZONE)  
 = 4,263,432 m<sup>2</sup> - 120,140  
 = 4,143,292 m<sup>2</sup>

GREENERY COVERAGE AT OTHER ZONE:  
 = TOTAL GREENERY AREA (INCL. WATER FEATURE) AT OTHER ZONE (FROM 3/F TO 7/F)  
 = 321,243 + 154,820 + 4,455,283 + 1,264,943  
 = 6,196,289 m<sup>2</sup>

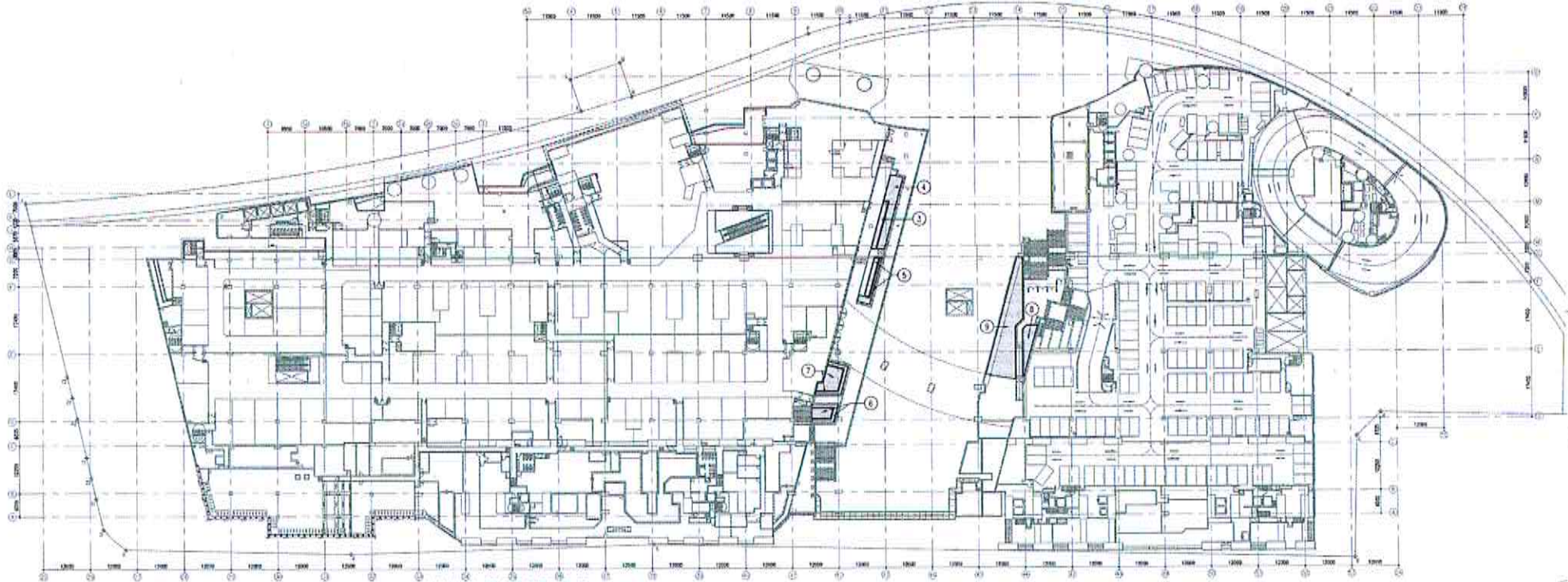
**TOTAL GREENERY COVERAGE OVER THE SITE (UNDER BUILDING PLANNING REGULATION)**  
 = (GREENERY AREA AT PRIMARY ZONE + GREENERY AREA AT OTHER ZONE) / SITE AREA x 100%  
 = 6,813,326 + 6,196,289 / 40,410,754 x 100%  
 = 13,009,615 / 40,410,754 x 100%  
 = 32.19% (> 30%)

**TOTAL GREENERY COVERAGE OVER THE SITE (UNDER LEASE CONDITION)**  
 = (GREENERY AREA AT PRIMARY ZONE + GREENERY AREA AT OTHER ZONE) / SITE AREA x 100%  
 = 6,813,326 + 6,196,289 / 42,870,000 x 100%  
 = 13,009,615 / 42,870,000 x 100%  
 = 30.35% (> 30%)

**TOTAL VERTICAL GREENING COVERAGE OVER THE SITE (UNDER BUILDING PLANNING REGULATION)**  
 = (705,560 + 89,350 + 662,767 + 780,949 + 359,422 + 45,193) / 40,410,754 x 100%  
 = 2,618,141 / 40,410,754 x 100%  
 = 6.48% (< 9%)

**TOTAL VERTICAL GREENING COVERAGE OVER THE SITE (UNDER LEASE CONDITION)**  
 = (705,560 + 89,350 + 662,767 + 780,949 + 359,422 + 45,193) / 42,870,000 x 100%  
 = 2,618,141 / 42,870,000 x 100%  
 = 6.13% (< 9%)

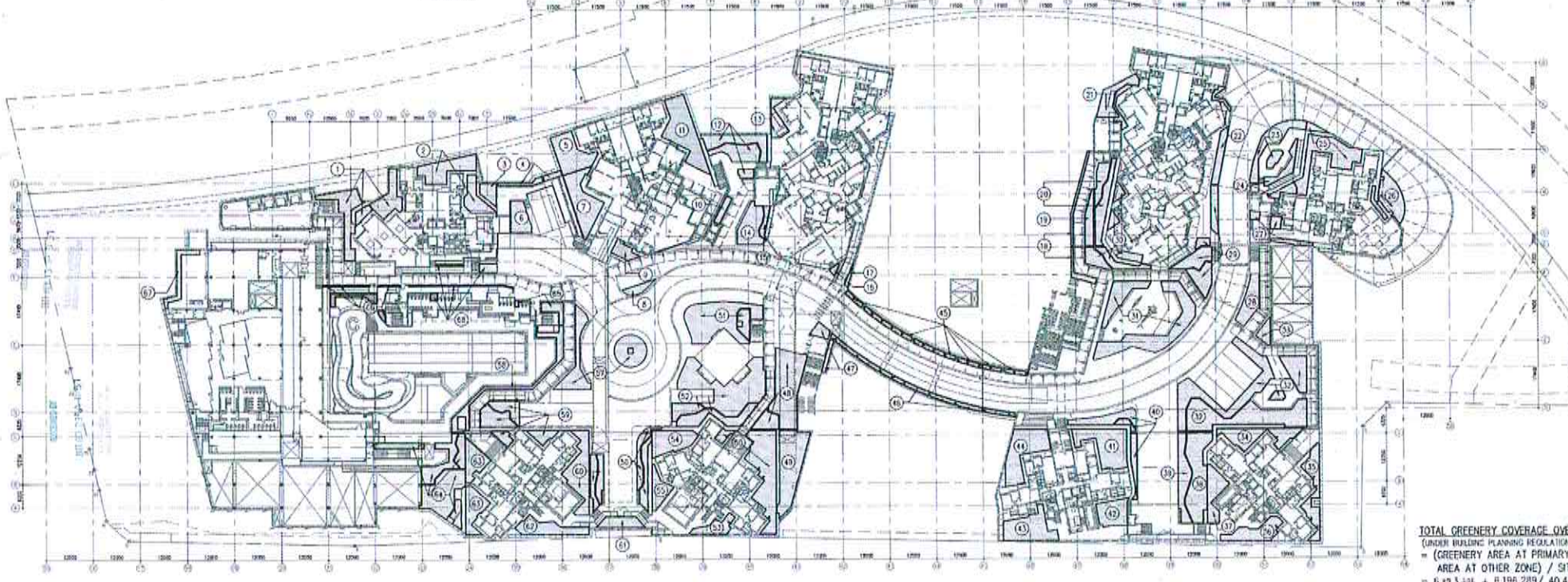
**TOTAL GREENING FEATURES OVER TOTAL PROVIDED GREENERY:**  
 = (2,618,141 + 17,385 + 10,729 + 27,776 + 65,523 + 29,242 + 53,971) / 13,009,615 x 100%  
 = 2,828,672 / 13,009,615 x 100%  
 = 21.74% (< 30%)



① GREENERY LAYOUT AT OTHER ZONE - 3/F  
1:500

**CALCULATION OF SITE COVERAGE OF GREENERY AT 3/F (OTHER ZONE)**  
 COUNTABLE UNCOVERED AREA OF PLANTER/LAWN  
 ① = 14,646 m<sup>2</sup> ② = 42,883 m<sup>2</sup>  
 ③ = 45,199 m<sup>2</sup> ④ = 25,140 m<sup>2</sup>  
 ⑤ = 21,243 m<sup>2</sup> ⑥ = 146,673 m<sup>2</sup>  
 ⑦ = 25,191 m<sup>2</sup>  
 TOTAL = 321,243 m<sup>2</sup>

AREA OF SITE COVERAGE OF GREENERY AT 3/F (OTHER ZONE)  
 = 321,243 m<sup>2</sup>



③ GREENERY LAYOUT AT OTHER ZONE - 6/F  
1:500

Statement 2: The works shown on these plans are TYPE II WORKS (general building work) in respect of which the Building Authority's consent is applied for.

**AMENDED PLAN**

1. The plan has been prepared in accordance with the Building Ordinance and the Building Regulations.



Project Name: Jubilee Year Investments Limited  
 Project Address: No. 2, Queen's Road, Tsim Sha Tsui, Kowloon, Hong Kong  
 Project No.: 1001/2018/006  
 Date: 12/12/2018

West Rail Tsim Wan West Station  
 TWS Bayside Property Development  
 Tsim Wan Town Lot No. 401

**GREENERY COVERAGE CALCULATION (SHEET 3 OF 3)**

Scale: 1:500  
 Drawing No.: A/28/7/20  
 Date: 12/12/2018

100% Energy Saving  
 Senior Building Supervisor  
 An Accredited Activity  
 - 5 DEC 2017