

(a) CALCULATION FOR SITE COVERAGE OF PLANTER (m²)

G1 = 41.823	G61 = 31.967	G128 = 9.285
G2 = 5.448	G62 = 1.121	G129 = 3.142
G3 = 7.683	G63 = 3.818	G130 = 3.142
G4 = 37.941	G64 = 18.111	G131 = 22.930
G5 = 5.901	G65 = 1.120	G132 = 3.409
G6 = 1.371	G66 = 4.132	G133 = 3.283
G7 = 25.069	G67 = 3.464	TOTAL = 2840.185
G8 = 27.139	G68 = 22.059	
G9 = 33.475	G69 = 2.031	
G10 = 22.941	G70 = 22.127	
G11 = 43.870	G71 = 40.753	
G12 = 7.680	G72 = 0.331	
G13 = 11.088	G73 = 0.596	
G14 = 3.006	G74 = 12.190	
G15 = 7.268	G75 = 0.808	
G16 = 9.941	G76 = 62.495	
G17 = 4.026	G77 = 53.877	
G18 = 2.799	G78 = 12.678	
G19 = 17.414	G79 = 31.084	
G20 = 35.705	G80 = 36.699	
G21 = 2.880	G81 = 14.317	
G22 = 0.636	G82 = 1.081	
G23 = 4.506	G83 = 3.208	
G24 = 3.438	G84 = 41.716	
G25 = 2.075	G85 = 165.515	
G26 = 1.900	G86 = 41.393	
G27 = 4.741	G87 = 37.019	
G28 = 24.203	G88 = 31.672	
G29 = 12.379	G89 = 1.231	
G30 = 2.366	G90 = 0.184	
G31 = 53.400	G91 = 12.609	
G32 = 1.100	G92 = 8.186	
G33 = 35.620	G93 = 6.513	
G34 = 4.738	G94 = 0.713	
G35 = 3.234	G95 = 94.907	
G36 = 2.419	G96 = 32.681	
G37 = 16.160	G97 = 69.774	
G38 = 10.833	G98 = 281.810	
G39 = 10.929	G99 = 39.695	
G40 = 30.046	G100 = 32.785	
G41 = 8.057	G101 = 121.890	
G42 = 7.747	G102 = 3.432	
G43 = 23.326	G103 = 0.734	
G44 = 112.241	G104 = 47.448	
G45 = 63.934	G105 = 1.473	
G46 = 1.327	G106 = 13.090	
G47 = 2.546	G107 = 52.334	
G48 = 3.142	G108 = 37.540	
G49 = 128.207	G109 = 2.283	
G50 = 2.545	G110 = 5.601	
G51 = 16.661	G111 = 0.450	
G52 = 0.957	G112 = 4.341	
G53 = 34.197	G113 = 0.450	
G54 = 198.516	G114 = 4.341	
G55 = 7.069	G115 = 0.450	
G56 = 27.389	G116 = 5.615	

TOTAL GREENERY AREA :

(a) PLANTER	(b) WATER FEATURE	(c) COVERED GREENERY	(d) VERTICAL GREENING	(e) GRASS PAVER	
= 2840.185	+ 115.131	+ 60.956	+ 272.088	+ 5.801	= 3294.161 m ² (20.351%)

(b) CALCULATION FOR SITE COVERAGE OF WATER FEATURE (m²)

W1 = 37.506 x 50% = 18.753
W2 = 150.102 x 50% = 75.051
W3 = 2.321 x 50% = 1.161
W4 = 28.843 x 50% = 14.422
W5 = 11.488 x 50% = 5.744
TOTAL = 115.131

(c) CALCULATION FOR SITE COVERAGE OF COVERED GREENERY (m²)

CL1 = 11.899 x 50% = 5.950
CL2 = 43.756 x 50% = 21.878
CL3 = 1.641 x 50% = 0.821
CL4 = 11.691 x 50% = 5.846
CL5 = 14.066 x 50% = 7.033
CL6 = 6.625 x 50% = 3.313
CL7 = 7.15 x 50% = 3.575
CL8 = 11.18 x 50% = 5.590
CL9 = 1.320 x 50% = 0.660
CL12 = 0.733 x 50% = 0.367
CL13 = 1.160 x 50% = 0.580
CL15 = 0.556 x 50% = 0.278
CL16 = 0.333 x 50% = 0.167
CL17 = 0.373 x 50% = 0.187
CL18 = 0.717 x 50% = 0.359
CL19 = 1.341 x 50% = 0.670
CL21 = 0.887 x 50% = 0.444
CL22 = 2.405 x 50% = 1.203
CL23 = 1.654 x 50% = 0.827
CL24 = 2.416 x 50% = 1.208
TOTAL = 60.956

(d) CALCULATION FOR SITE COVERAGE OF VERTICAL GREENING (m²)

VG1 = 22.920 x 2.30 = 52.716
VG2 = 6.100 x 2.40 = 14.640
VG3 = 5.200 x 2.40 = 12.480
VG4 = 5.200 x 2.40 = 12.480
VG5 = 5.200 x 2.40 = 12.480
VG6 = 5.200 x 2.40 = 12.480
VG7 = 5.200 x 2.40 = 12.480
VG8 = = 98.532
VG9 = 2.490 x 8.55 = 21.900
VG10 = 2.490 x 8.55 = 21.900
TOTAL = 272.088

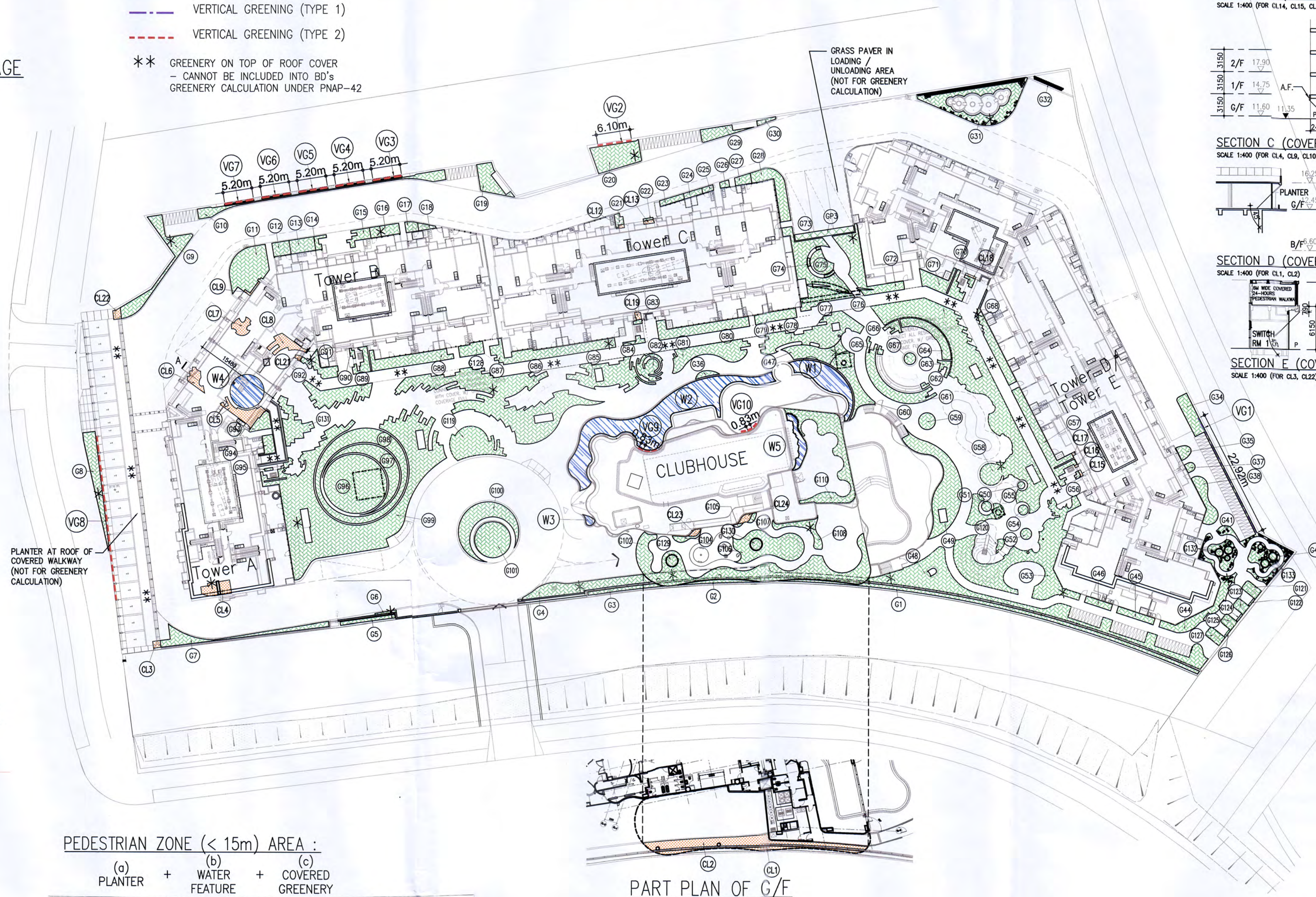
(e) CALCULATION FOR SITE COVERAGE OF GRASS PAVER (m²)

GP3 = 11.601 x 50% = 5.801
TOTAL = 5.801

NOTE :

- * IRRIGATION TO BE PROVIDED AT GREENERY AREAS
- GRASS PAVER AREAS
- GREENERY AREAS
- WATER FEATURE AREAS
- COVERED GREENERY
- VERTICAL GREENING (TYPE 1)
- VERTICAL GREENING (TYPE 2)
- ** GREENERY ON TOP OF ROOF COVER - CANNOT BE INCLUDED INTO BD'S GREENERY CALCULATION UNDER PNAP-42

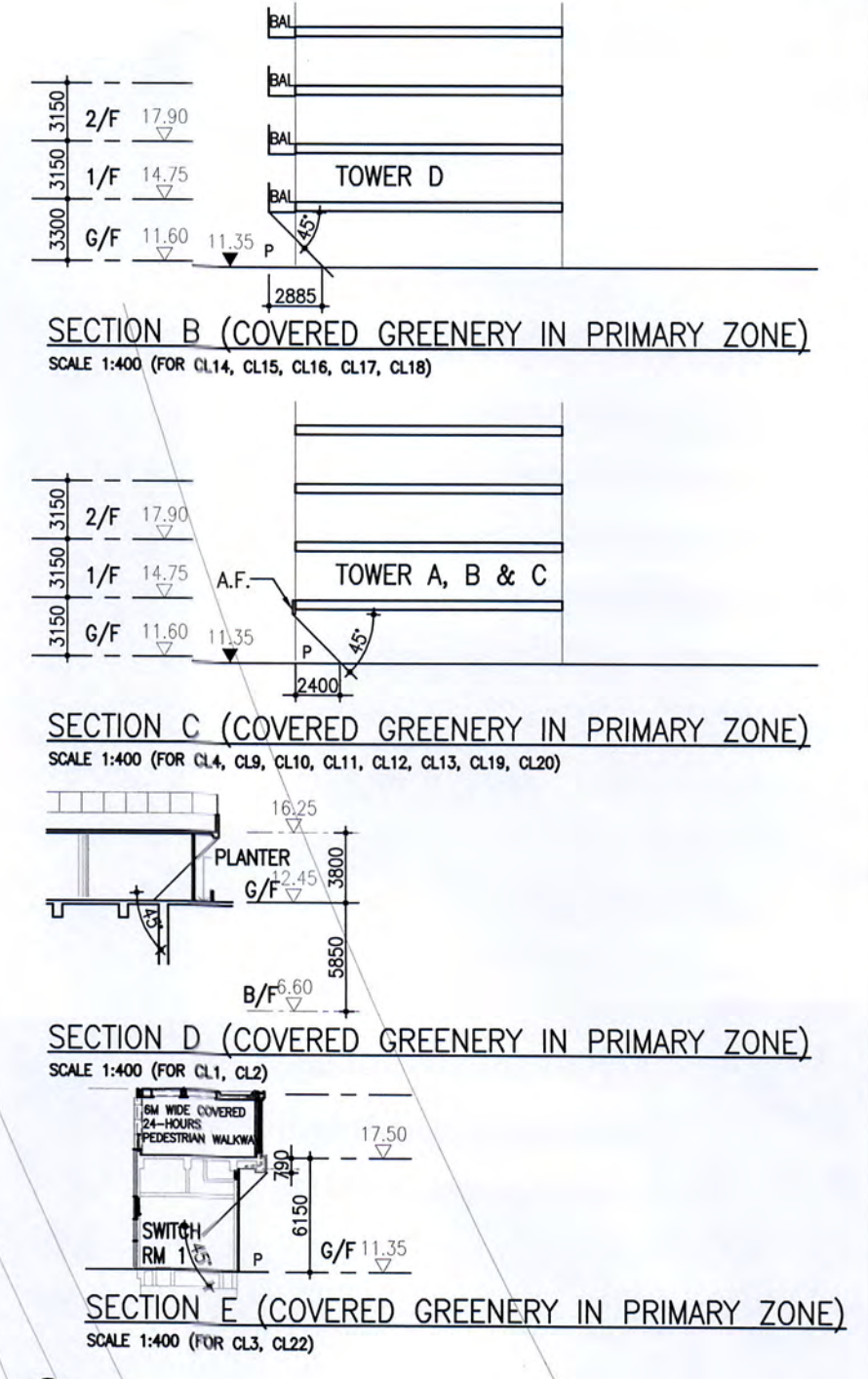
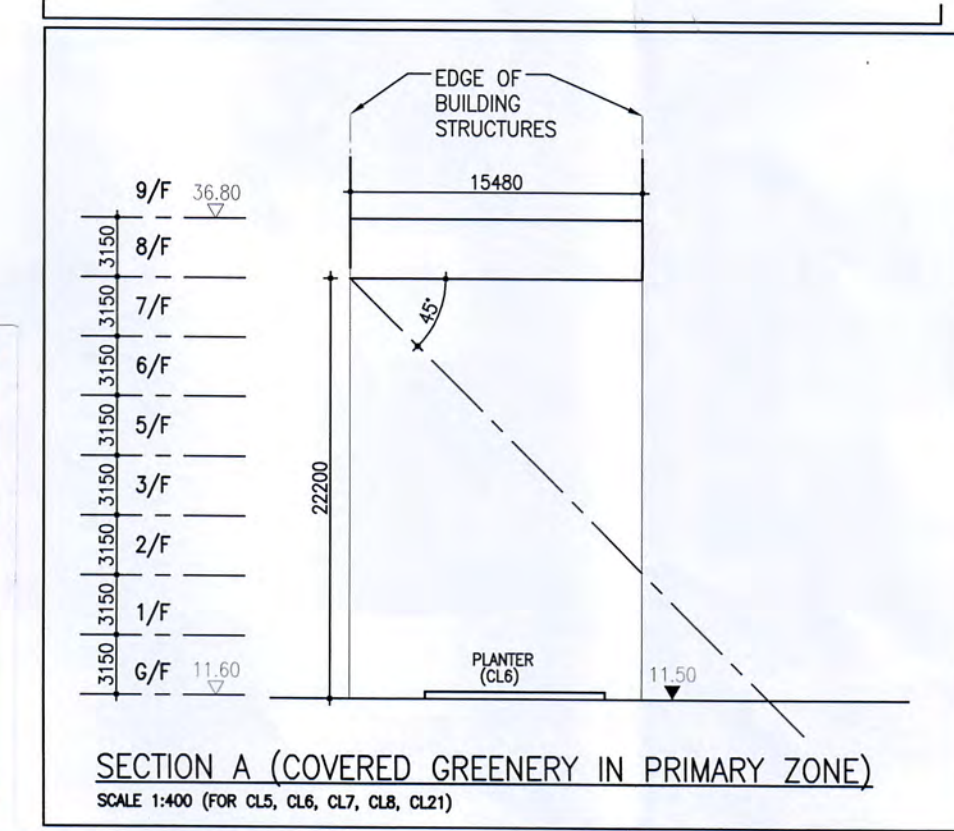
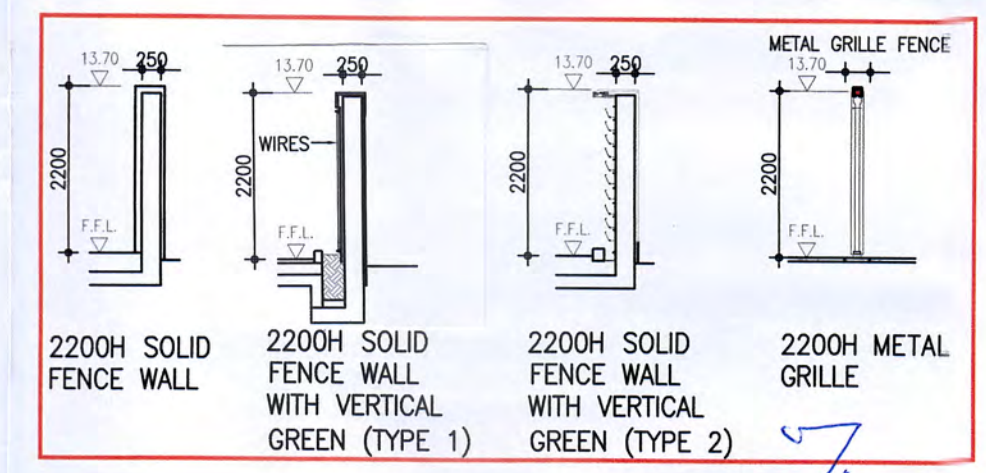
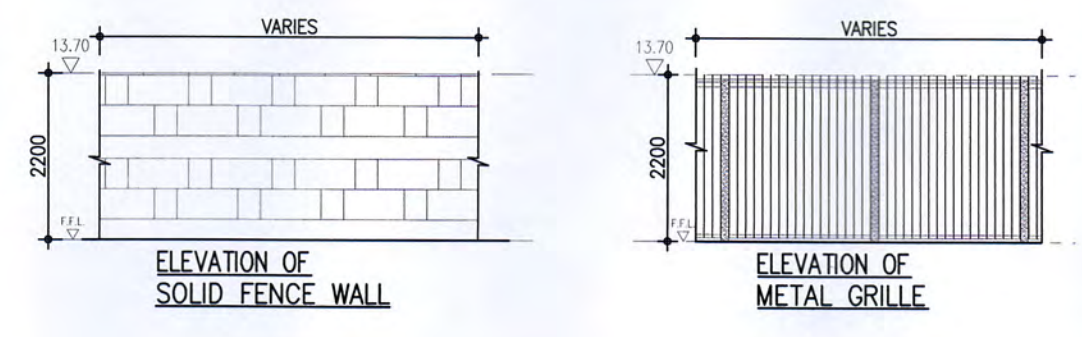
SITE AREA (m ²)	MINIMUM SITE COVERAGE OF GREENERY			
	PEDESTRIAN ZONE (G/F)		TOTAL GREENERY AREAS	
	REQUIRED (10%)	PROVIDED	REQUIRED (20%)	PROVIDED
1000 < 16187 < 20000	16187 x 10%	3016.272 m ² / 16187 m ²	16187 x 20%	3294.161 m ² / 16187 m ²
	1618.700 m ²	=18.634% > 10%	3237.400 m ²	=20.351% > 20%



PEDESTRIAN ZONE (< 15m) AREA :

(a) PLANTER	(b) WATER FEATURE	(c) COVERED GREENERY	
= 2840.185	+ 115.131	+ 60.956	= 3016.272 m ²

GREENING FEATURES AREA ALLOWED : 3294.161m² x 30% = 988.248m² (MAX.)
 GREENING FEATURES AREA PROVIDED : (PNAP APP-152 APPENDIX D ITEM 2 REFERS) = 453.976 m² < 988.248m² (MAX.)



NOTE: This plan has been processed on a curtailed check basis under the centralized processing system as promulgated in PNAP ADM-19. The duties of the authorized person, registered structural engineer and/or registered geotechnical engineer concerned as specified under section 4(3)(b) and the provision of section 14(2)(c) of the Buildings Ordinance are of no force or effect in this regard.

Plan Approved
 TANG Kai-chung
 Senior Building Surveyor
 for BUILDING AUTHORITY
 - 6 MAY 2022

KENNETH T.H. CHAU R.I.B.A. F.H.K.I.A.
 AUTHORIZED PERSON-ARCHITECT

STATEMENT II: The Works shown on these plans are Type II Works (Division II Plans) in respect of which consent is applied for the purpose of fast track consent application under regulation 31 of the Building (Administration) Regulations
 Note: First consent dated: 15 FEB 2022

B.D. SUBMISSION AMENDMENT 11 APRIL 2022

NO.	DATE	REVISION
I	2018-09-18	B.D. SUBMISSION
J	2018-11-30	B.D. AMENDMENT
K	2019-06-26	B.D. AMENDMENT
L	2019-10-25	B.D. AMENDMENT
M	2020-05-06	B.D. AMENDMENT

APP.	NO.	DATE	REVISION
NC	N	2020-12-24	B.D. AMENDMENT
NC	O	2021-05-20	B.D. AMENDMENT
NC	P	2021-08-27	B.D. AMENDMENT
NC	Q	2022-01-03	B.D. AMENDMENT
NC	R		

APP.	DESIGNED	DRAWN	DRAWING TITLE:
NC	JC	LWH	SUSTAINABLE BUILDING DESIGN
NC	APPROVED	CHECKED	CALCULATION - 2
NC	JC	HT	
JC	DATE	SCALE	
	MAR_2014	1 : 500	