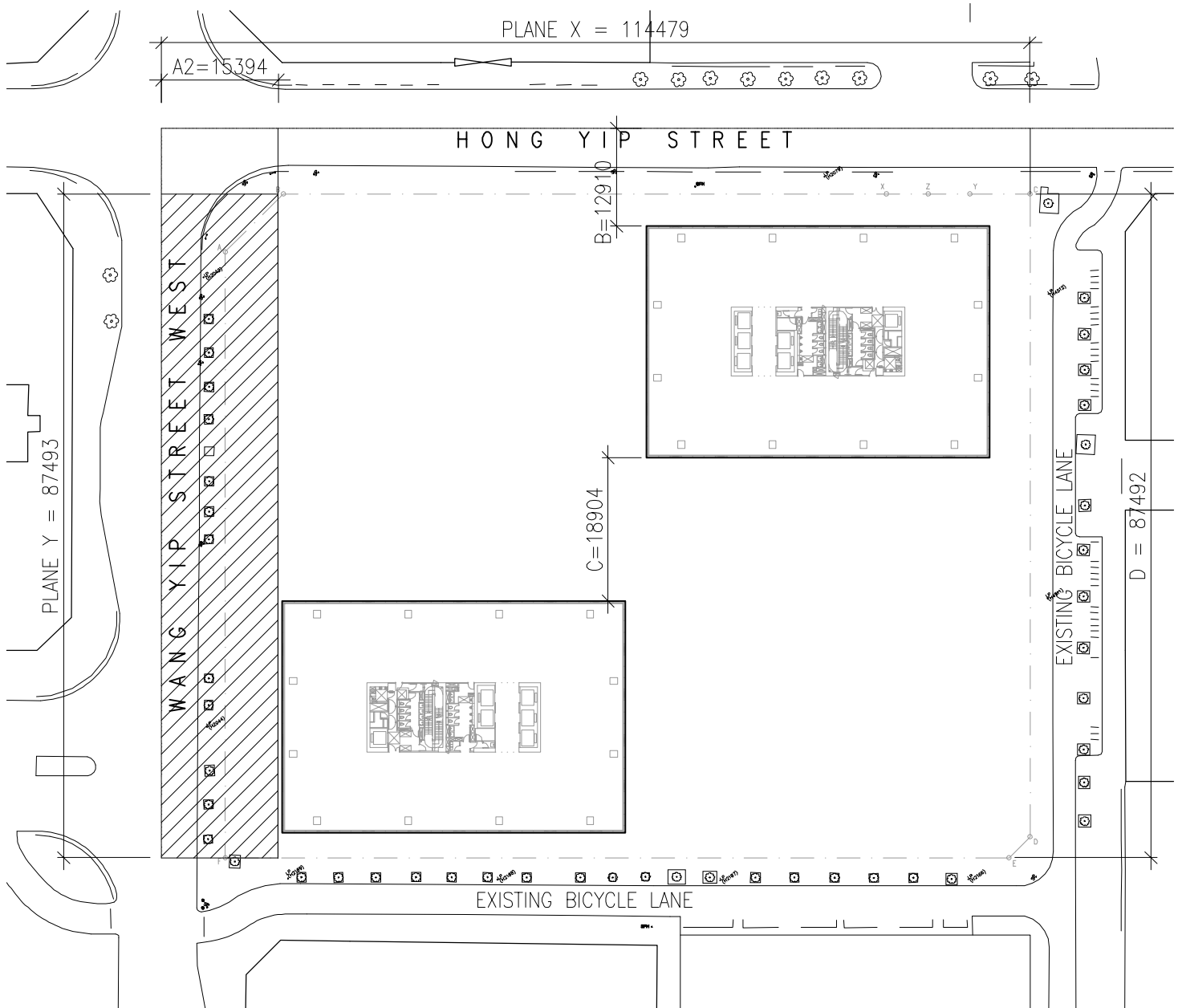
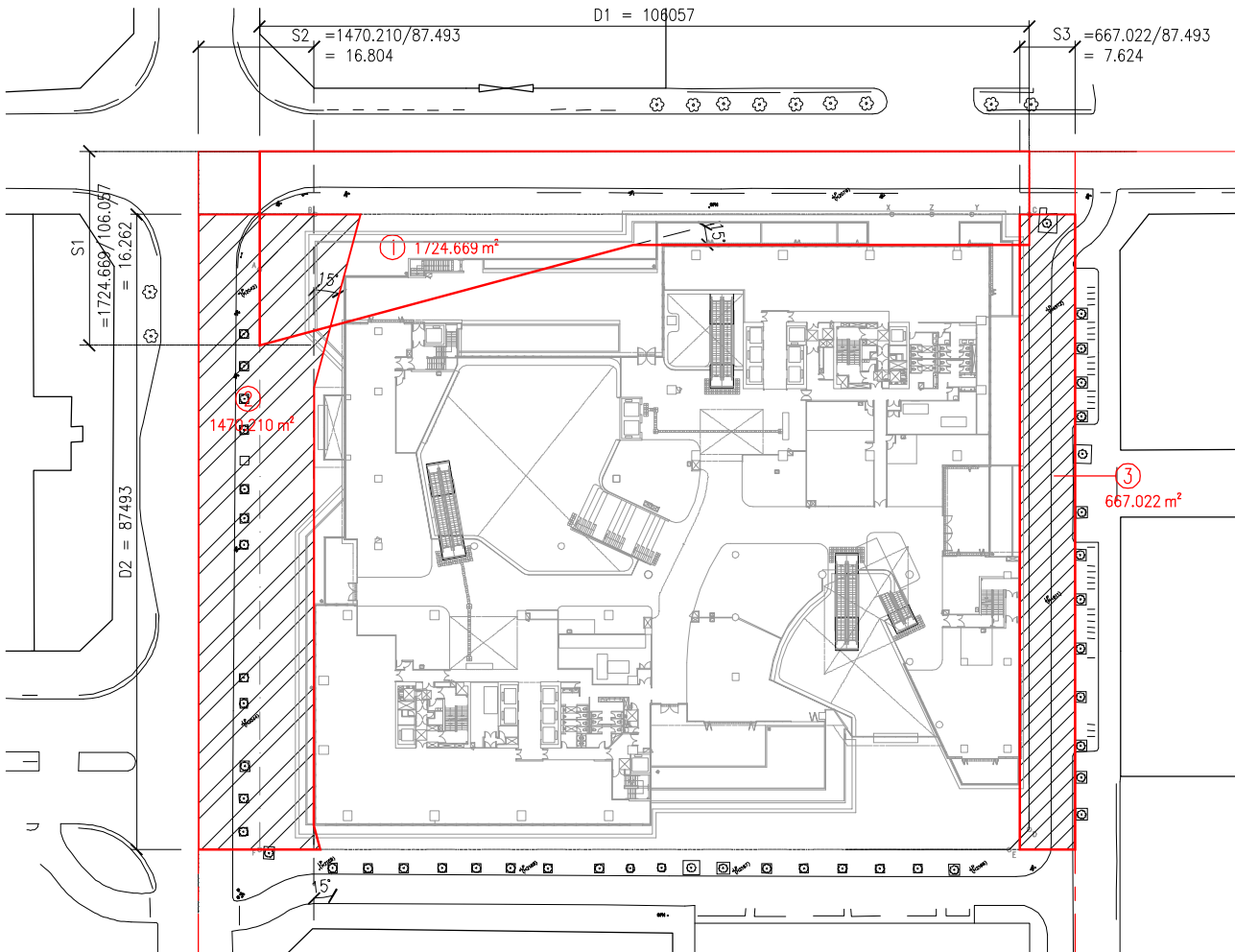


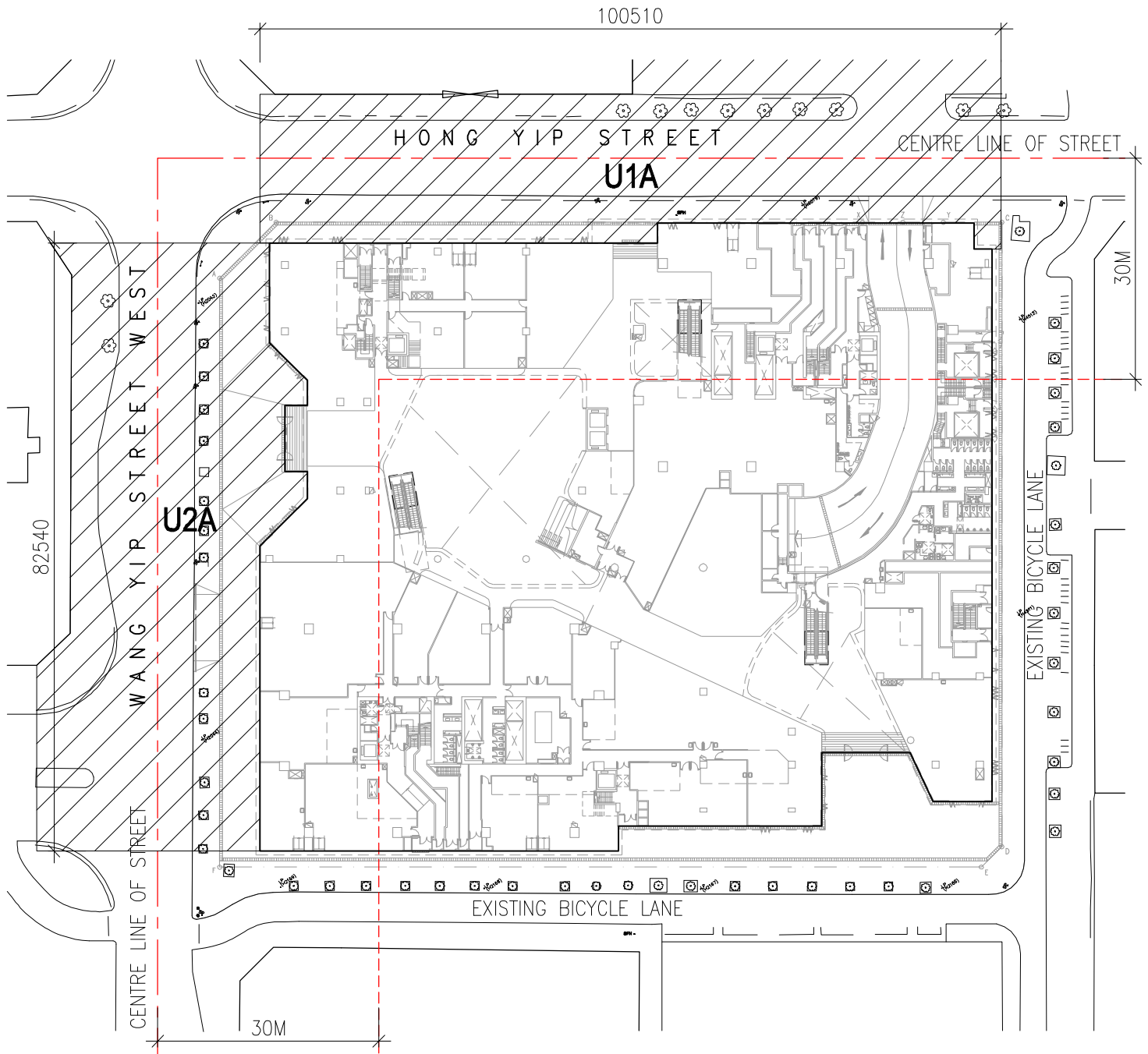
SEPARATING DISTANCE & PERMEABILITY OF BUILDING DIAGRAM AT  
LOW ZONE (3/F) 1:800@A4



SEPARATING DISTANCE & PERMEABILITY OF BUILDING DIAGRAM AT  
TYPICAL FLOOR (MID ZONE & HIGH ZONE) 1:800@A4



SEPARATING DISTANCE & PERMEABILITY OF BUILDING DIAGRAM AT  
LOW ZONE (1/F) 1:800@A4



**BUILDING SEPARATION DIAGRAM 1:800@A4**

**MEAN WIDTH OF HONG YIP STREET CANYON (U1A)**

$$U1A = \frac{2188.563 \text{ m}^2}{100.510 \text{ M}} = 21.775$$

**MAX. PERMISSIBLE CONTINUOUS PROJECTED FACADE LENGTH (Lp)**

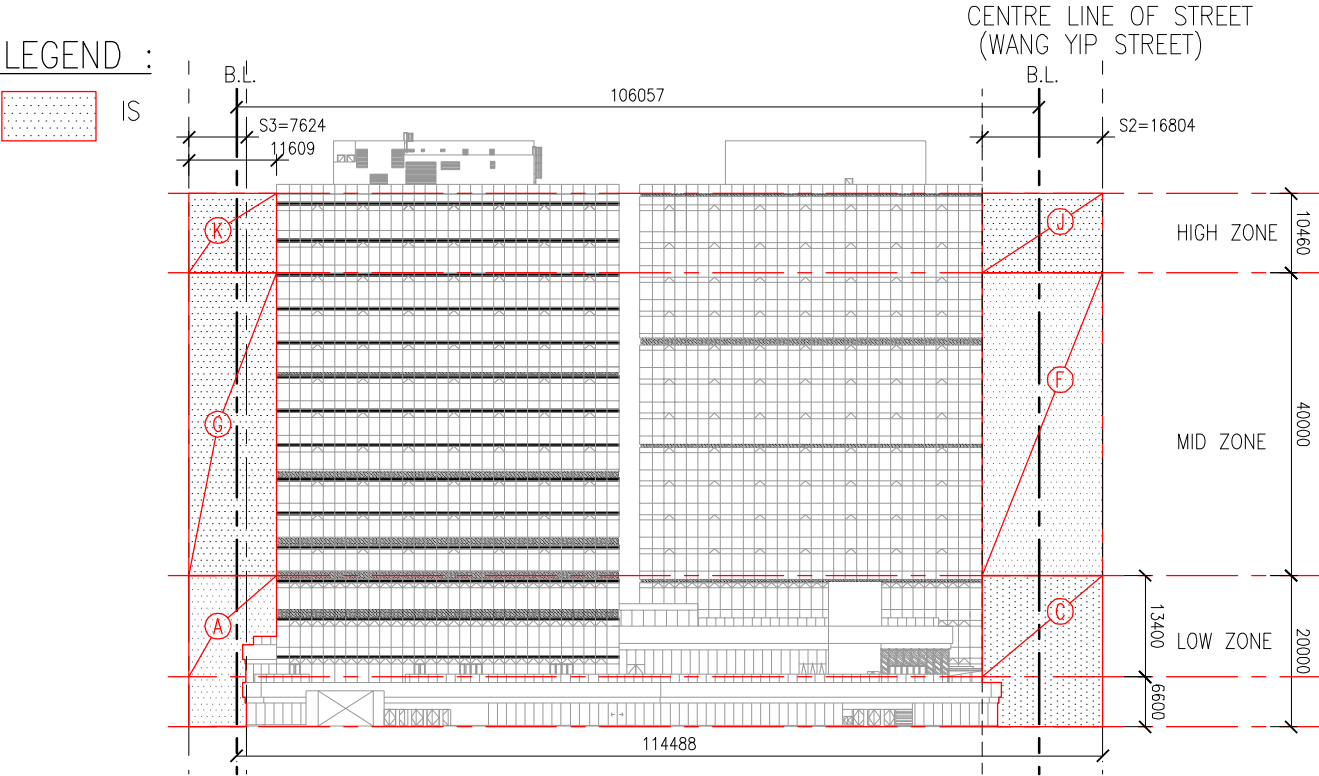
$$Lp1 = 5 \times 21.775 = 108.873 \text{ M} > 100.510 \text{ M}$$

**MEAN WIDTH OF WANG YIP STREET CANYON (U2A)**

$$U2A = \frac{2382.517 \text{ m}^2}{82.540 \text{ M}} = 28.865$$

**MAX. PERMISSIBLE CONTINUOUS PROJECTED FACADE LENGTH (Lp)**

$$Lp2 = 5 \times 28.865 = 144.325 \text{ M} > 82.540 \text{ M}$$



SEPARATING DISTANCE & PERMEABILITY OF BUILDING DIAGRAM (PLANE X)  
 1:800@A4

**PLANE X TOTAL FACADE AREA : (HIGH ZONE)**

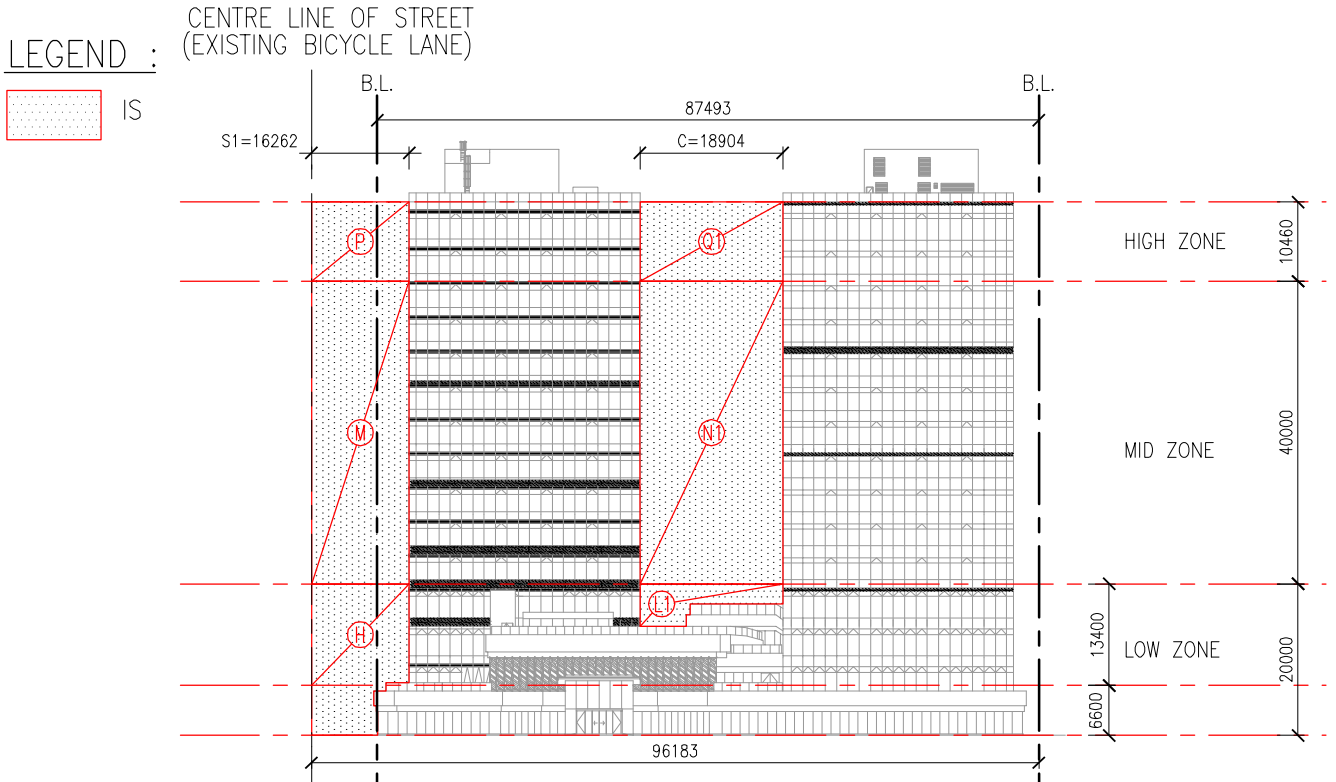
$$\begin{aligned}
 &= 114.480 \times 11.150 = 1276.452 \text{ m}^2 \\
 &\quad \quad \quad \quad (K) \quad \quad (J) \\
 P &= \frac{121.430 + 175.770}{1276.452} \times 100\% = 23.283\% > 20\%
 \end{aligned}$$

**PLANE X TOTAL FACADE AREA : (MID ZONE)**

$$\begin{aligned}
 &= 114.480 \times 40.000 = 4579.200 \text{ m}^2 \\
 &\quad \quad \quad \quad (G) \quad \quad (F) \\
 P &= \frac{464.360 + 672.160}{4579.200} \times 100\% = 24.819\% > 20\%
 \end{aligned}$$

**PLANE X TOTAL FACADE AREA : (LOW ZONE)**

$$\begin{aligned}
 &= 114.480 \times 20.000 = 2289.600 \text{ m}^2 \\
 &\quad \quad \quad \quad (A) \quad \quad (C) \\
 P &= \frac{152.480 + 336.080}{2289.600} \times 100\% = 21.338\% > 20\%
 \end{aligned}$$



SEPARATING DISTANCE & PERMEABILITY OF BUILDING DIAGRAM (PLANE Y)  
 1:800@A4

**PLANE Y TOTAL FACADE AREA : (HIGH ZONE)**

$$= 96.180 \times 11.150 = 1072.407 \text{ m}^2$$

(P)      (Q1)

$$P = \frac{170.101 + 197.736}{1072.407} \times 100\% = 34.300\% > 20\%$$

**PLANE Y TOTAL FACADE AREA : (MID ZONE)**

$$= 96.180 \times 40.000 = 3847.200 \text{ m}^2$$

(M)      (N1)

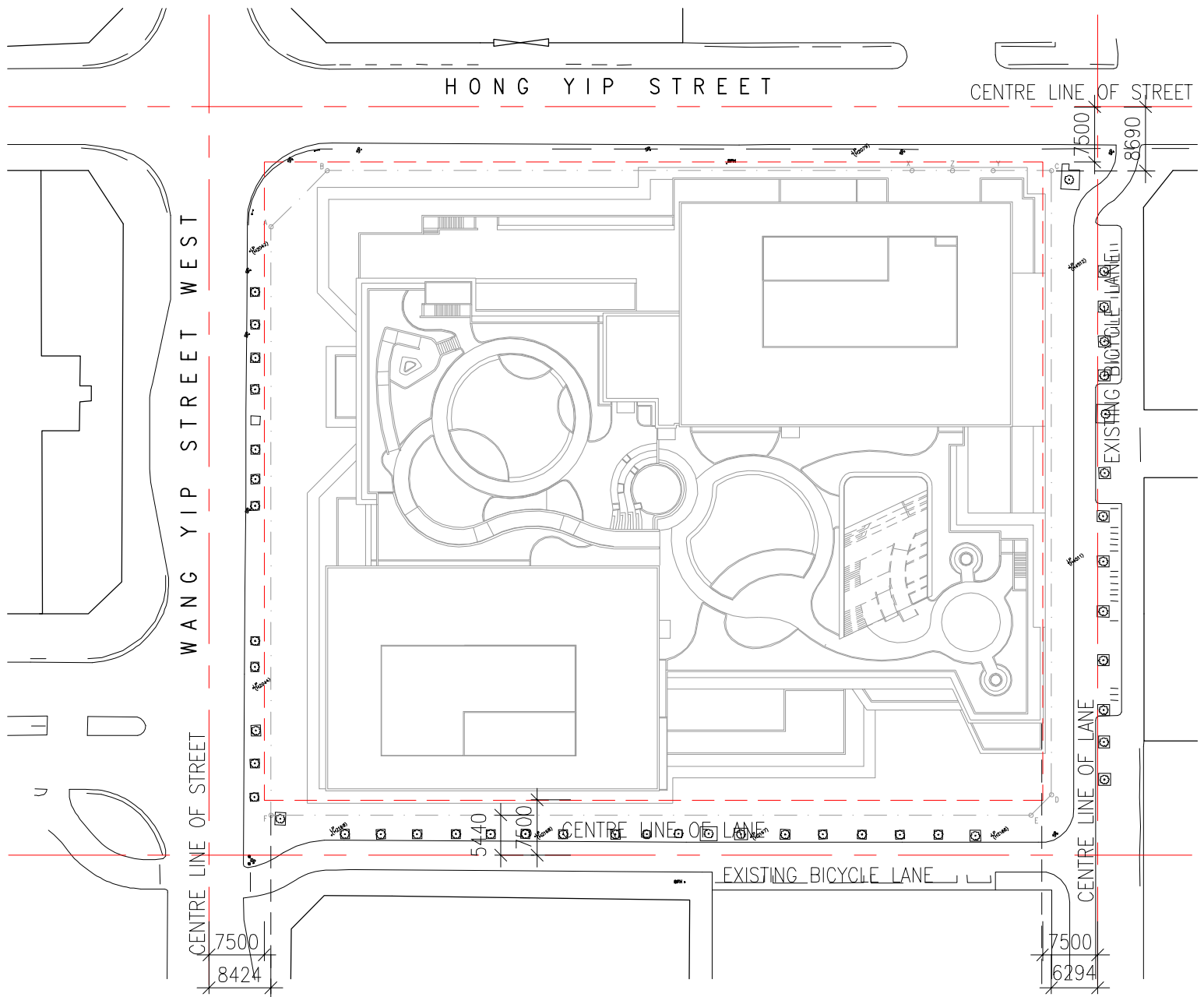
$$P = \frac{650.480 + 756.160}{3847.200} \times 100\% = 36.563\% > 20\%$$

**PLANE Y TOTAL FACADE AREA : (LOW ZONE)**

$$= 96.180 \times 20.000 = 1923.600 \text{ m}^2$$

(H)      (L1)

$$P = \frac{325.240 + 68.055}{1923.600} \times 100\% = 20.446\% > 20\%$$



BUILDING SETBACK (ACCORDING TO PNAP APP 151 & 152) 1:800@A4

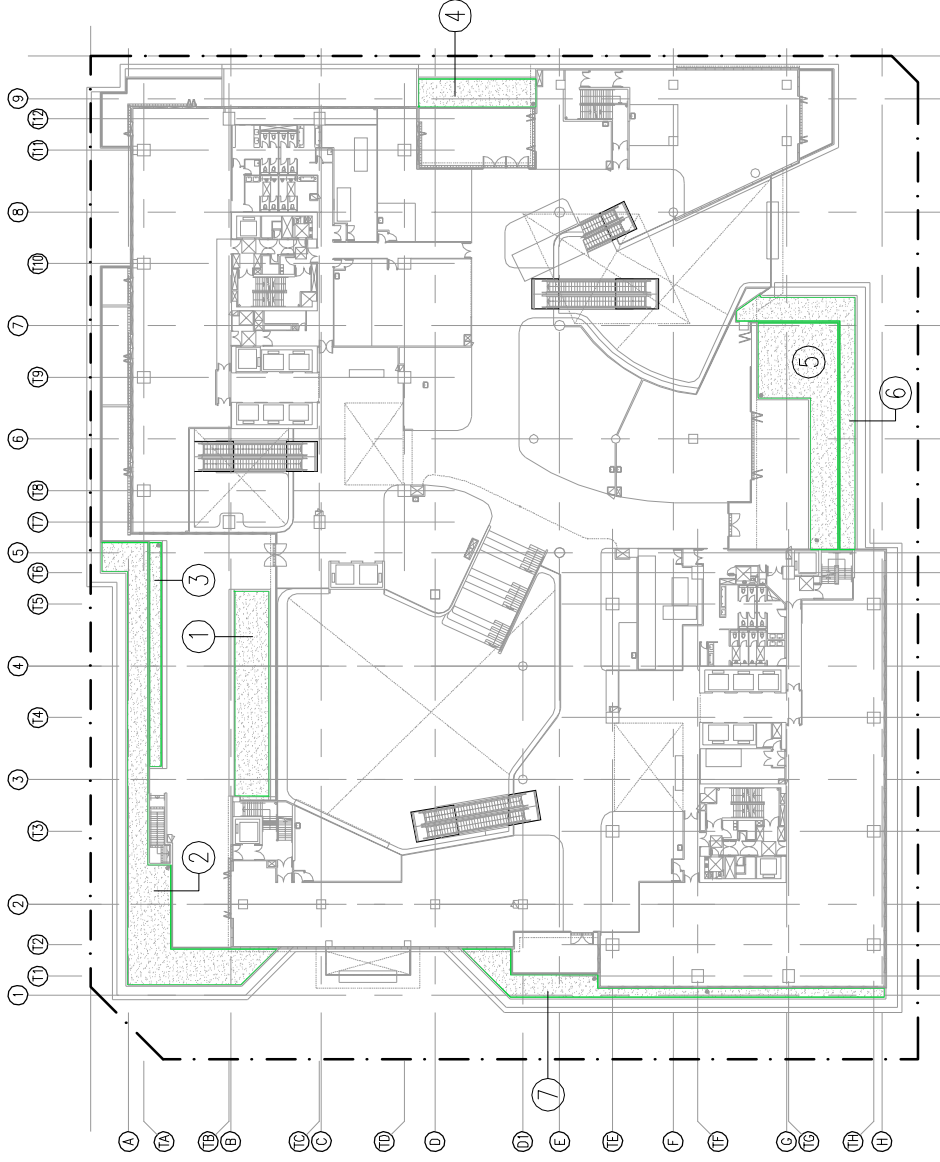
BUILDING BOUNDARY AT WANG YIP STREET WEST FROM THE CENTRE LINE OF STREET = 8.425m > 7.5m

BUILDING BOUNDARY AT HONG YIP STREET FROM THE CENTRE LINE OF STREET = 8.690m > 7.5m

\* BUILDING SETBACK AT WANG YIP STREET WEST AND HONG YIP STREET IS NOT REQUIRED.

BUILDING BOUNDARY AT SOUTH BICYCLE LINE IS REQUIRED = 7.5m - 5.440m = 2.060m

BUILDING BOUNDARY AT EAST BICYCLE LINE IS REQUIRED = 7.5m - 6.294m = 1.206m



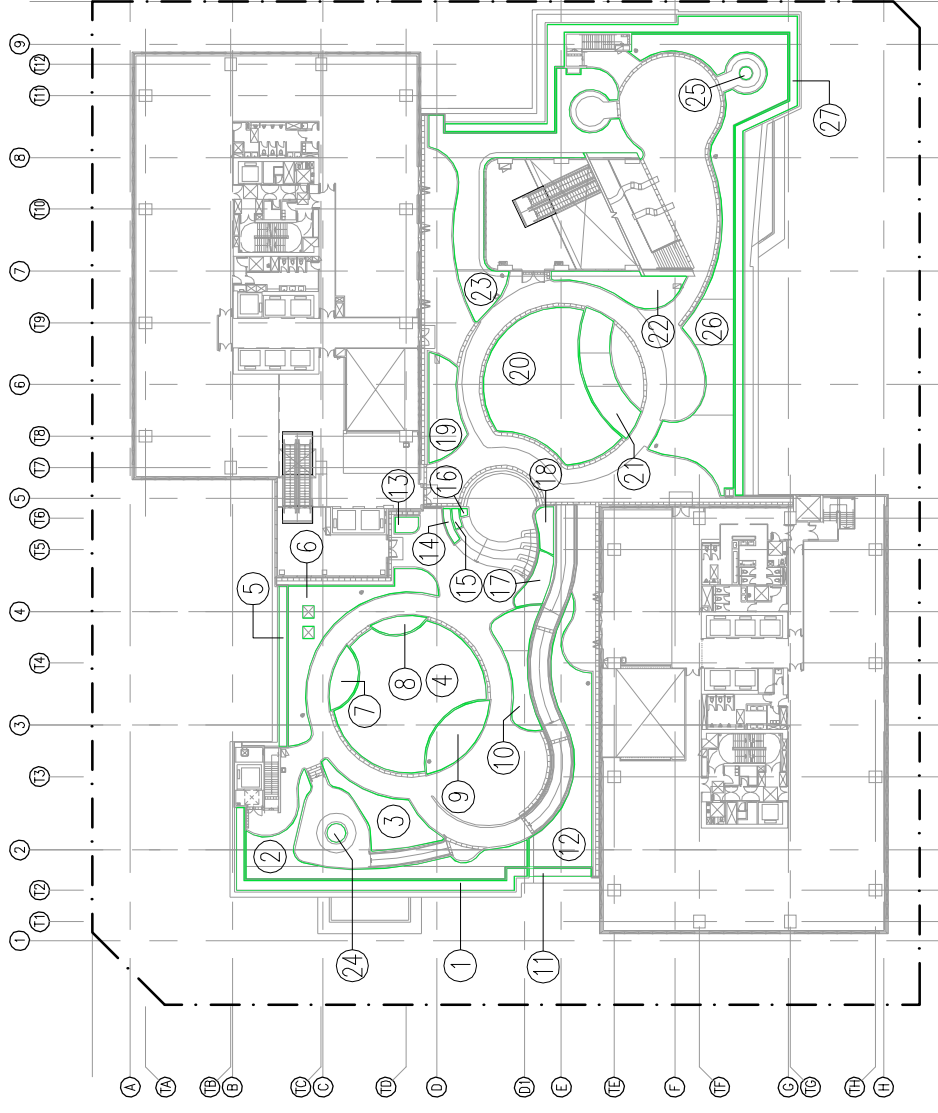
**ACCESSIBLE GREENERY AREA**  
**AT 1/F**

1	=	77.880 m <sup>2</sup>
2	=	174.433 m <sup>2</sup>
3	=	28.398 m <sup>2</sup>
4	=	36.368 m <sup>2</sup>
5	=	113.227 m <sup>2</sup>
6	=	68.541 m <sup>2</sup>
7	=	62.377 m <sup>2</sup>
<b>SUB-TOTAL</b>	<b>=</b>	<b>561.224 m<sup>2</sup></b>

GREENERY DIAGRAM FOR 1F 1:800@A4



**ACCESSIBLE GREENERY AREA  
 AT 2/F**

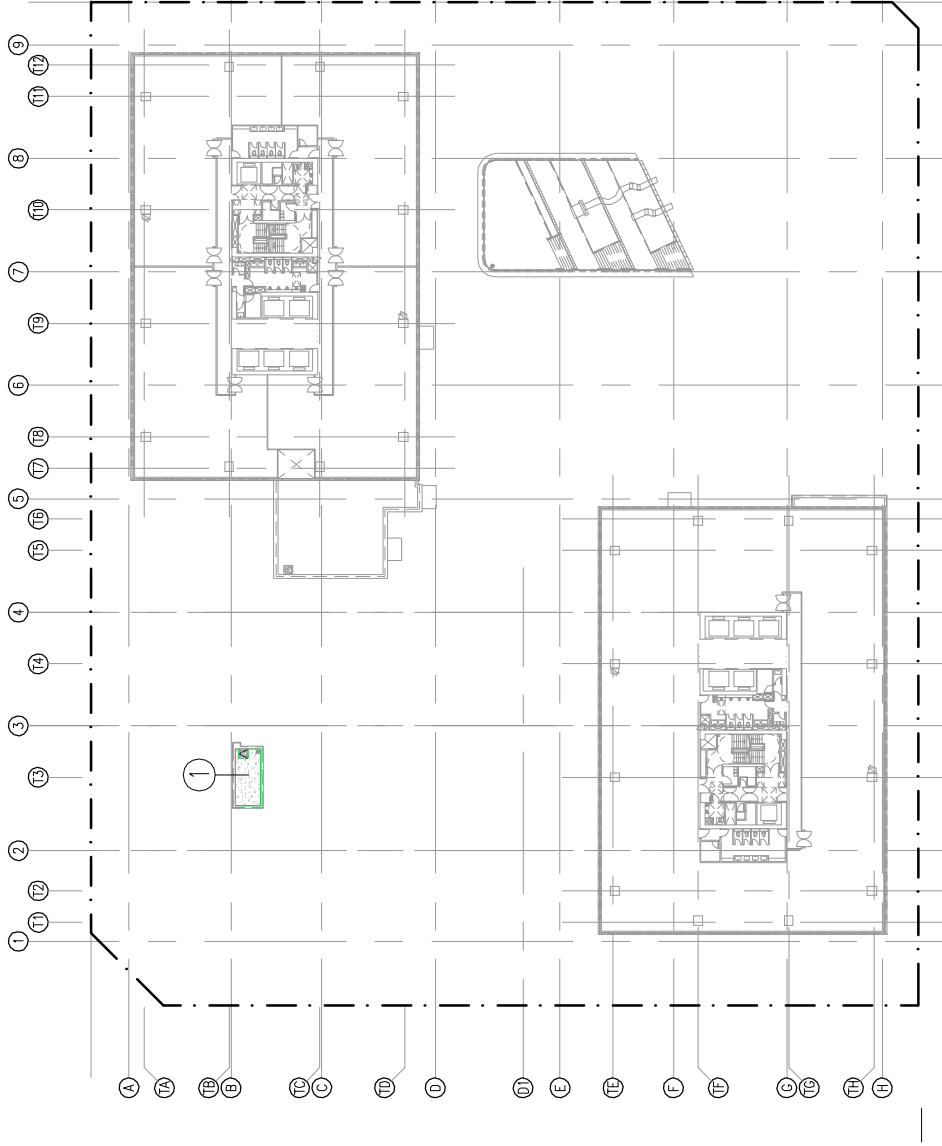


GREENERY DIAGRAM FOR 2/F 1:800@A4

1	=	38.532 m <sup>2</sup>
2	=	72.062 m <sup>2</sup>
3	=	40.579 m <sup>2</sup>
4	=	161.373 m <sup>2</sup>
5	=	13.520 m <sup>2</sup>
6	=	70.546 m <sup>2</sup>
7	=	13.954 m <sup>2</sup>
8	=	8.050 m <sup>2</sup>
9	=	29.890 m <sup>2</sup>
10	=	34.568 m <sup>2</sup>
11	=	5.262 m <sup>2</sup>
12	=	83.336 m <sup>2</sup>
13	=	3.935 m <sup>2</sup>
14	=	2.781 m <sup>2</sup>
15	=	1.562 m <sup>2</sup>
16	=	0.588 m <sup>2</sup>
17	=	12.670 m <sup>2</sup>
18	=	7.656 m <sup>2</sup>
19	=	33.387 m <sup>2</sup>
20	=	148.062 m <sup>2</sup>
21	=	42.675 m <sup>2</sup>
22	=	30.702 m <sup>2</sup>
23	=	135.333 m <sup>2</sup>
24	=	135.333 m <sup>2</sup>
25	=	3.142 m <sup>2</sup>
26	=	187.677 m <sup>2</sup>
27	=	95.288 m <sup>2</sup>

**TOTAL**

**= 1412.463 m<sup>2</sup>**



**INACCESSIBLE GREENERY AREA**  
**AT 3/F**

1	=	15.274 m <sup>2</sup>
<b>TOTAL</b>	<b>=</b>	<b>15.274 m<sup>2</sup></b>

GREENERY DIAGRAM FOR 3/F & TOP ROOF 1:800@A4

**SITE COVERAGE OF GREENERY**

(ACCORDING TO PNAP APP 151 & 152)

**AREA REQUIRED :**

**PEDESTRAIN ZONE (IN PRIMARY ZONE FIRST 15M)**

$$= 9246 \quad \times \quad 10\% \quad = \quad 924.600 \quad \text{sq.m.}$$

**TOTAL AREA**

$$= 9246 \quad \times \quad 20\% \quad = \quad 1849.200 \quad \text{sq.m.}$$

**AREA PROVIDED :**

**PEDESTRAIN ZONE (PRIMARY ZONE FIRST 15M)**

$$\begin{aligned} &= 1/F+2/F \\ &= 561.224 \quad + \quad 1412.463 \\ &= 1973.687 \quad > \quad 924.600 \quad \text{sq.m. (ie OK)} \end{aligned}$$

**TOTAL AREA**

$$\begin{aligned} &= 1/F+2/F+3/F \\ &= 561.224 \quad + \quad 1412.463 \\ &+ \quad 15.274 \\ &= 1988.961 \quad > \quad 1849.200 \quad \text{sq.m. (ie OK)} \end{aligned}$$