

(a) CALCULATION FOR SITE COVERAGE OF PLANTER (m²)

G1 = 41.823	G61 = 31.967	G128 = 9.285
G2 = 5.448	G62 = 1.121	G129 = 3.142
G3 = 7.683	G63 = 3.818	G130 = 3.142
G4 = 37.941	G64 = 18.111	G131 = 22.930
G5 = 5.901	G65 = 1.120	G132 = 3.409
G6 = 1.371	G66 = 4.132	G133 = 3.283
G7 = 25.069	G67 = 3.464	TOTAL = 2840.185
G8 = 27.139	G68 = 22.059	
G9 = 33.475	G69 = 2.031	
G10 = 22.941	G70 = 22.127	
G11 = 43.870	G71 = 40.753	
G12 = 7.680	G72 = 0.331	
G13 = 11.088	G73 = 0.596	
G14 = 3.006	G74 = 12.190	
G15 = 7.268	G75 = 0.808	
G16 = 9.941	G76 = 62.495	
G17 = 4.026	G77 = 53.877	
G18 = 2.799	G78 = 12.678	
G19 = 17.414	G79 = 31.084	
G20 = 35.705	G80 = 36.699	
G21 = 2.880	G81 = 14.317	
G22 = 0.636	G82 = 1.081	
G23 = 4.506	G83 = 3.208	
G24 = 3.438	G84 = 41.716	
G25 = 2.075	G85 = 165.515	
G26 = 1.900	G86 = 41.393	
G27 = 4.741	G87 = 37.019	
G28 = 24.203	G88 = 31.672	
G29 = 12.379	G89 = 1.231	
G30 = 2.366	G90 = 0.184	
G31 = 53.400	G91 = 12.609	
G32 = 1.100	G92 = 8.186	
G33 = 35.620	G93 = 6.513	
G34 = 4.738	G94 = 0.713	
G35 = 3.234	G95 = 94.907	
G36 = 2.419	G96 = 32.681	
G37 = 16.160	G97 = 69.774	
G38 = 10.833	G98 = 281.810	
G39 = 10.929	G99 = 39.695	
G40 = 30.046	G100 = 32.785	
G41 = 8.057	G101 = 121.890	
G42 = 15.747	G102 = 3.432	
G43 = 23.326	G103 = 0.734	
G44 = 112.241	G104 = 47.448	
G45 = 63.934	G105 = 1.473	
G46 = 1.327	G106 = 13.090	
G47 = 2.546	G107 = 52.334	
G48 = 3.142	G108 = 37.540	
G49 = 128.207	G109 = 2.283	
G50 = 2.545	G110 = 5.601	
G51 = 16.661	G111 = 0.450	
G52 = 0.957	G112 = 4.341	
G53 = 34.197	G113 = 4.450	
G54 = 198.516	G114 = 4.341	
G55 = 7.069	G115 = 4.450	
G56 = 27.389	G116 = 5.615	

TOTAL GREENERY AREA :

(a) PLANTER	(b) WATER FEATURE	(c) COVERED GREENERY	(d) VERTICAL GREENING	(e) GRASS PAVER
= 2840.185	+ 115.131	+ 60.956	+ 272.088	+ 5.801
= 3294.161 m ² (20.351%)				

(b) CALCULATION FOR SITE COVERAGE OF WATER FEATURE (m²)

W1 = 37.506 x 50% = 18.753
W2 = 150.102 x 50% = 75.051
W3 = 2.321 x 50% = 1.161
W4 = 28.843 x 50% = 14.422
W5 = 11.488 x 50% = 5.744
TOTAL = 115.131

(c) CALCULATION FOR SITE COVERAGE OF COVERED GREENERY (m²)

CL1 = 11.899 x 50% = 5.950
CL2 = 43.756 x 50% = 21.878
CL3 = 1.641 x 50% = 0.821
CL4 = 11.691 x 50% = 5.846
CL5 = 14.066 x 50% = 7.033
CL6 = 6.625 x 50% = 3.313
CL7 = 7.15 x 50% = 3.575
CL8 = 11.18 x 50% = 5.590
CL9 = 1.320 x 50% = 0.660
CL12 = 0.733 x 50% = 0.367
CL13 = 1.160 x 50% = 0.580
CL15 = 0.556 x 50% = 0.278
CL16 = 0.333 x 50% = 0.167
CL17 = 0.373 x 50% = 0.187
CL18 = 0.717 x 50% = 0.359
CL19 = 1.341 x 50% = 0.670
CL21 = 0.887 x 50% = 0.444
CL22 = 2.405 x 50% = 1.203
CL23 = 1.654 x 50% = 0.827
CL24 = 2.416 x 50% = 1.208
TOTAL = 60.956

(d) CALCULATION FOR SITE COVERAGE OF VERTICAL GREENING (m²)

VG1 = 22.920 x 2.30 = 52.716
VG2 = 6.100 x 2.40 = 14.640
VG3 = 5.200 x 2.40 = 12.480
VG4 = 5.200 x 2.40 = 12.480
VG5 = 5.200 x 2.40 = 12.480
VG6 = 5.200 x 2.40 = 12.480
VG7 = 5.200 x 2.40 = 12.480
VG8 = = 98.532
VG9 = 2.490 x 8.55 = 21.900
VG10 = 2.490 x 8.55 = 21.900
TOTAL 272.088

(e) CALCULATION FOR SITE COVERAGE OF GRASS PAVER (m²)

GP3 = 11.601 x 50% = 5.801
TOTAL = 5.801

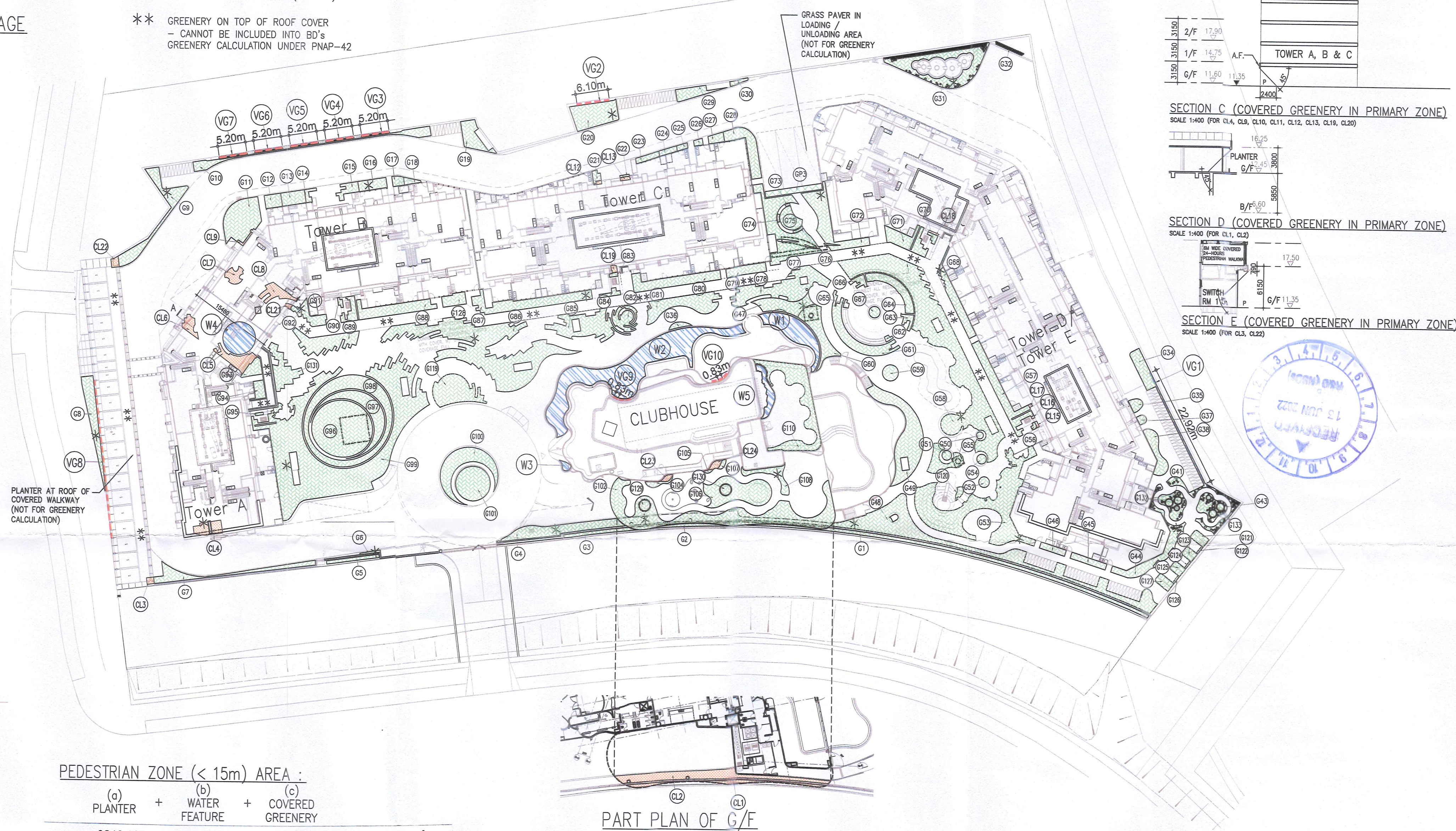
NOTE :

* IRRIGATION TO BE PROVIDED AT GREENERY AREAS

- GRASS PAVER AREAS
- GREENERY AREAS
- WATER FEATURE AREAS
- COVERED GREENERY
- VERTICAL GREENING (TYPE 1)
- VERTICAL GREENING (TYPE 2)

** GREENERY ON TOP OF ROOF COVER - CANNOT BE INCLUDED INTO BD'S GREENERY CALCULATION UNDER PNAP-42

SITE AREA (m ²)	MINIMUM SITE COVERAGE OF GREENERY			
	PEDESTRIAN ZONE (G/F)		TOTAL GREENERY AREAS	
	REQUIRED (10%)	PROVIDED	REQUIRED (20%)	PROVIDED
1000 < 16187 < 20000	16187 x 10%	3016.272 m ² / 16187 m ²	16187 x 20%	3294.161 m ² / 16187 m ²
	1618.700 m ²	= 18.634% > 10%	3237.400 m ²	= 20.351% > 20%

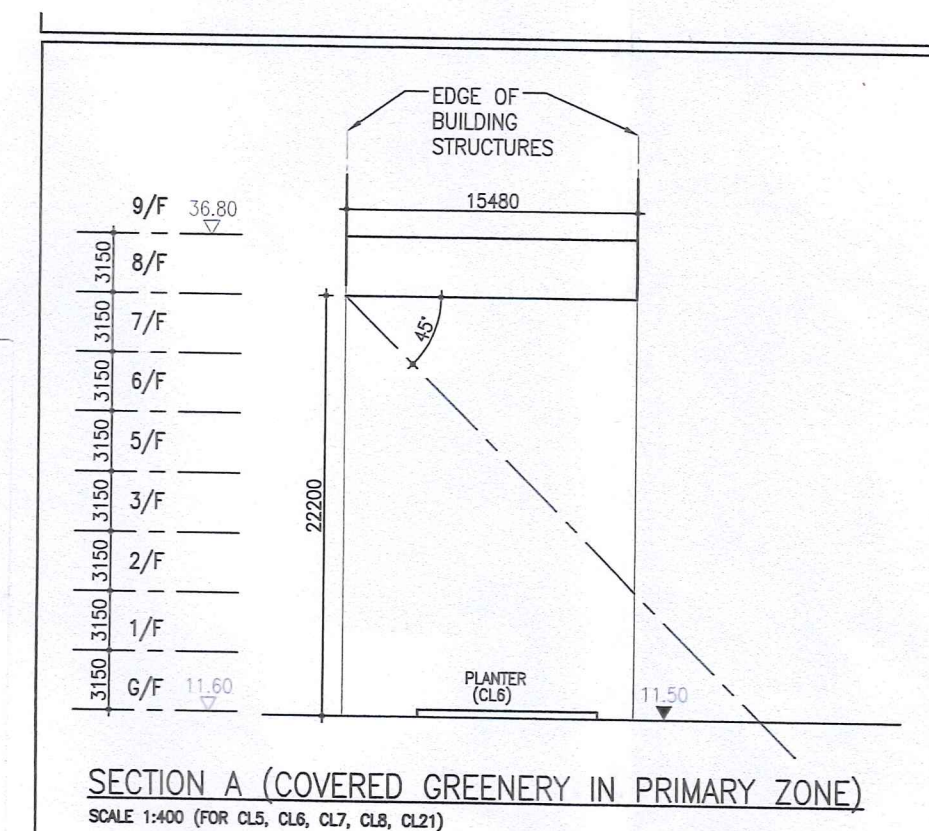
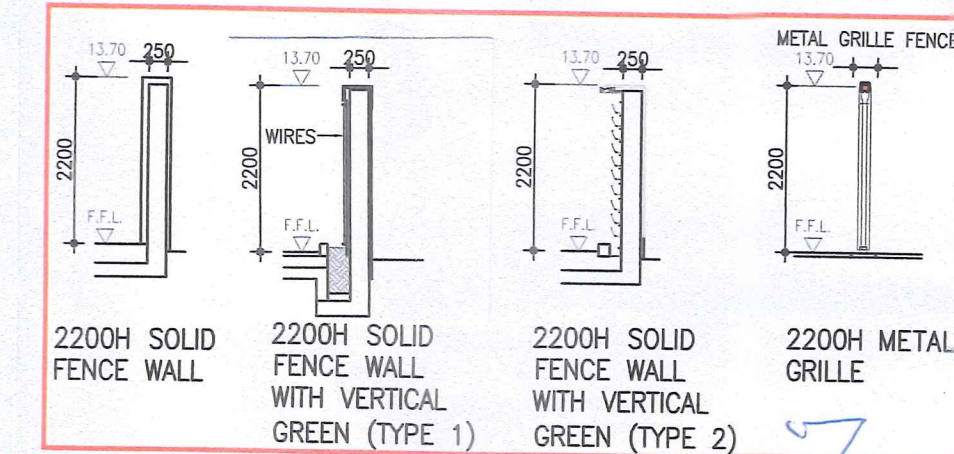
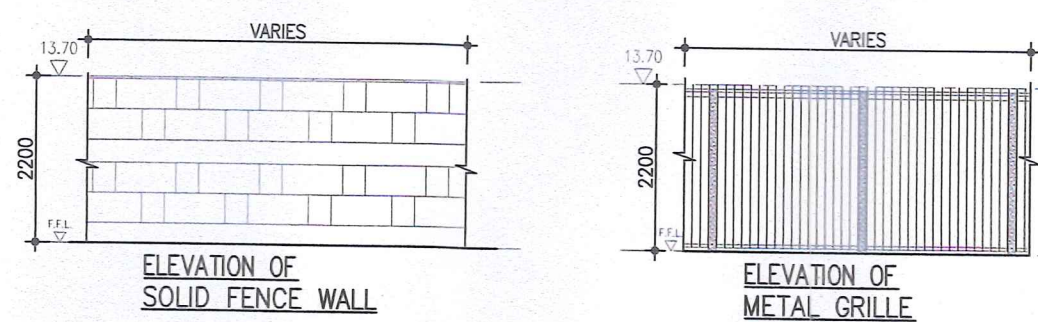


PEDESTRIAN ZONE (< 15m) AREA :

(a) PLANTER	(b) WATER FEATURE	(c) COVERED GREENERY
= 2840.185	+ 115.131	+ 60.956
= 3016.272 m ²		

GREENING FEATURES AREA ALLOWED : 3294.161m² x 30% = 988.248m² (MAX.)

GREENING FEATURES AREA PROVIDED : (PANP APP-152 APPENDIX D ITEM 2 REFERS) = 453.976 m² < 988.248m² (MAX.)



Note: This plan has been processed on a computerized check table under the centralized processing system as promulgated in PNAP ADM-19. The duties of the authorized person, registered structural engineer and/or registered geotechnical engineer concerned as specified under section 4(3)(b) and the provision of section 14(2)(c) of the Buildings Ordinance are of particular relevance in this regard.

Plan Approved
TANG Kai-chung
Senior Building Surveyor
for the Building Authority
6 MAY 2022

SCANNED COPY

KENNETH H. CHAU R.B.A. F.H.K.A.
AUTHORIZED PERSON-ARCHITECT

STATEMENT II: The Works shown on these plans are Type II Works (Demolition Plans) in respect of which consent is applied for the purpose of fast-track consent application under regulation 33 of the Building (Administration) Regulations (Note: First consent date: 13 FEB 2021)

B.D. SUBMISSION AMENDMENT 11 APRIL 2022

NO.	DATE	REVISION	APP.	NO.	DATE	REVISION	APP.
I	2018-09-18	B.D. SUBMISSION	NC	N	2020-12-24	B.D. AMENDMENT	NC
J	2018-11-30	B.D. AMENDMENT	NC	O	2021-05-20	B.D. AMENDMENT	NC
K	2019-06-26	B.D. AMENDMENT	NC	P	2021-09-27	B.D. AMENDMENT	NC
L	2019-10-25	B.D. AMENDMENT	NC	Q	2022-01-03	B.D. AMENDMENT	NC
M	2022-05-06	B.D. AMENDMENT	NC	R			NC

APP.	DESIGNED	DRAWN	DRAWING TITLE:
NC	JC	LWH	SUSTAINABLE BUILDING DESIGN CALCULATION - 2
NC	HT	HT	
NC	HT	HT	
JC	DATE	SCALE	
JC	MAR_2014	1 : 500	

PROJECT NO :	REV.
13-488	R
DRAWING NO : A-51	
CAO REF : 488-CAL-SBD	