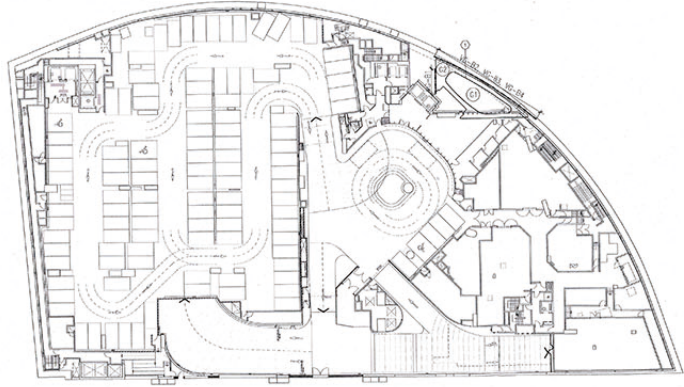


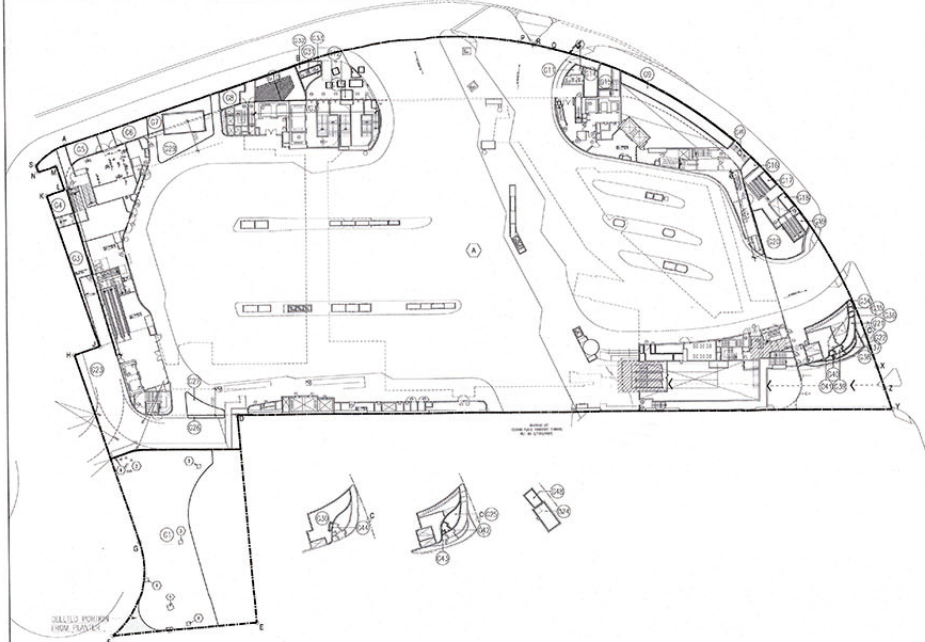
SUSTAINABLE BUILDING DESIGN DEMONSTRATION
SITE COVERAGE OF GREENERY
(SHALL COMPLY WITH PNAP APP-152)



SITE COVERAGE OF GREENERY
CALCULATION AT B1 FLOOR

FOR PRIMARY ZONE:
 G2 = 50,690 s.m.
 SUB-TOTAL = 50,690 s.m.
 SUBJECT: 1 = 42,544 s.m.
 SUB-TOTAL = 42,544 s.m.
 TOTAL GREENERY ON GROUND = 42,544 s.m.
 FOR WATER TREATING (IMP.) AREA:
 G1 = 46,795 s.m. x 0.5 = 23,398 s.m.
 SUB-TOTAL = 23,398 s.m.
 TOTAL GREEN FEATURES AT B1 = 23,398 s.m.

SITE COVERAGE OF GREENERY DIAGRAM AT B1 FLOOR



SITE AREA
PHASE 2 (FINAL STAGE)
 TOTAL AREA = 10036 s.m. x 20000 s.m.

SITE COVERAGE OF GREENERY CALCULATION AT GROUND FLOOR

FOR PRIMARY ZONE:
 G1 = 43,922 s.m. G2 = 4,414 s.m. G3 = 42,418 s.m. G4 = 4,414 s.m. G5 = 4,414 s.m. G6 = 4,414 s.m. G7 = 4,414 s.m. G8 = 4,414 s.m. G9 = 4,414 s.m. G10 = 4,414 s.m. G11 = 4,414 s.m. G12 = 4,414 s.m. G13 = 4,414 s.m. G14 = 4,414 s.m. G15 = 4,414 s.m. G16 = 4,414 s.m. G17 = 4,414 s.m. G18 = 4,414 s.m. G19 = 4,414 s.m. G20 = 4,414 s.m. G21 = 4,414 s.m. G22 = 4,414 s.m. G23 = 4,414 s.m. G24 = 4,414 s.m. G25 = 4,414 s.m. G26 = 4,414 s.m. G27 = 4,414 s.m. G28 = 4,414 s.m. G29 = 4,414 s.m. G30 = 4,414 s.m. G31 = 4,414 s.m. G32 = 4,414 s.m. G33 = 4,414 s.m. G34 = 4,414 s.m. G35 = 4,414 s.m. G36 = 4,414 s.m. G37 = 4,414 s.m. G38 = 4,414 s.m. G39 = 4,414 s.m. G40 = 4,414 s.m. G41 = 4,414 s.m. G42 = 4,414 s.m. G43 = 4,414 s.m. G44 = 4,414 s.m. G45 = 4,414 s.m. G46 = 4,414 s.m. G47 = 4,414 s.m. G48 = 4,414 s.m. G49 = 4,414 s.m. G50 = 4,414 s.m. G51 = 4,414 s.m. G52 = 4,414 s.m. G53 = 4,414 s.m. G54 = 4,414 s.m. G55 = 4,414 s.m. G56 = 4,414 s.m. G57 = 4,414 s.m. G58 = 4,414 s.m. G59 = 4,414 s.m. G60 = 4,414 s.m. G61 = 4,414 s.m. G62 = 4,414 s.m. G63 = 4,414 s.m. G64 = 4,414 s.m. G65 = 4,414 s.m. G66 = 4,414 s.m. G67 = 4,414 s.m. G68 = 4,414 s.m. G69 = 4,414 s.m. G70 = 4,414 s.m. G71 = 4,414 s.m. G72 = 4,414 s.m. G73 = 4,414 s.m. G74 = 4,414 s.m. G75 = 4,414 s.m. G76 = 4,414 s.m. G77 = 4,414 s.m. G78 = 4,414 s.m. G79 = 4,414 s.m. G80 = 4,414 s.m. G81 = 4,414 s.m. G82 = 4,414 s.m. G83 = 4,414 s.m. G84 = 4,414 s.m. G85 = 4,414 s.m. G86 = 4,414 s.m. G87 = 4,414 s.m. G88 = 4,414 s.m. G89 = 4,414 s.m. G90 = 4,414 s.m. G91 = 4,414 s.m. G92 = 4,414 s.m. G93 = 4,414 s.m. G94 = 4,414 s.m. G95 = 4,414 s.m. G96 = 4,414 s.m. G97 = 4,414 s.m. G98 = 4,414 s.m. G99 = 4,414 s.m. G100 = 4,414 s.m.

SITE COVERAGE OF GREENERY DIAGRAM AT GROUND FLOOR

GREENERY AREA CALCULATION (PHASE 2)

GREENING AREA CALCULATION (PHASE 1)
(SHALL BE COMPLIED WITH APP-152)
 SITE AREA = 10036 s.m. x 20000 s.m.
 REQUIRED COVERAGE ON PRIMARY ZONE = 10% (PNAP APP-152)
 REQUIRED TOTAL SITE COVERAGE OF GREENERY = 20% (PNAP APP-152)

MAXIMUM ACCOUNTABLE SITE COVERAGE OF GREENERY OF OTHER GREENING FEATURES
(SHALL BE COMPLIED WITH APP-152)
 MAXIMUM ACCOUNTABLE SITE COVERAGE OF GREENERY OF OTHER GREENING FEATURES (CONCRETE GREENING & WATER FEATURES):
 - SITE AREA x 10% = 20%
 - 10036 x 10% = 1003.6 s.m.
 PROVIDED SITE COVERAGE OF GREENERY OF OTHER GREENING FEATURES (CONCRETE GREENING, WATER FEATURES & VERTICAL GREENING):
 - 81% OF AREA x (OF CC AREA + OF WF AREA) + 0% OF WF AREA + 81% OF WF AREA
 - 23,398 + 33,584 + 34,593 + 108,269
 PROVIDED AREA = 169,844 s.m.

COVERAGE OF GREENERY ON PRIMARY ZONE:

COVERAGE OF GREENERY ON PRIMARY ZONE:
(SHALL BE COMPLIED WITH APP-152)
 ACTUAL SITE COVERAGE OF GREENERY = GREENING AREA ON B1 + GROUND FLOOR + GREENING FEATURES x 100%
 = 42,544 + 23,398 + 30,719 x 100%
 = 96,661 s.m. x 100%
 = 96.66% > 10% (REQUIRED CONTACT ON PRIMARY ZONE)

SITE COVERAGE OF GREENERY:

SITE COVERAGE OF GREENERY:
(SHALL BE COMPLIED WITH APP-152)
 ACTUAL SITE COVERAGE OF GREENERY = GREENING AREA ON B1 + GROUND FLOOR + GREENING FEATURES (L1 + L2 + L3 + L4 + L5 + L6 + L7 + L8 + L9 + L10) x 100%
 = 42,544 + 23,398 + 30,719 + 41,022 + 25,153 + 56,183 + 483,326 x 100%
 = 623,335 s.m. x 100%
 = 62.33% > 30% (REQUIRED CONTACT ON PRIMARY ZONE)

Rev. No.	Date	Amendment	Purpose
1	20191128	FIRST SUBM.	FIRST SUBMISSION
A	20191114	GENERAL REVISION	REVISION
B	20191028	GENERAL REVISION	AMENDMENT
C	20191022	GENERAL REVISION	AMENDMENT
D	20191017	GENERAL REVISION	AMENDMENT
E	20191013	GENERAL REVISION	AMENDMENT
F	20191010	GENERAL REVISION	AMENDMENT
G	20191004	GENERAL REVISION	AMENDMENT
H	20191001	GENERAL REVISION	AMENDMENT
I	20191001	GENERAL REVISION	AMENDMENT
J	20191001	GENERAL REVISION	AMENDMENT
K	20191001	GENERAL REVISION	AMENDMENT
L	20191001	GENERAL REVISION	AMENDMENT

Rev. No.	Date	Amendment	Purpose
1	20200217	PHASE 2-CP	AMENDMENT

Rev. No.	Date	Amendment	Purpose
1	20200217	PHASE 2-CP	AMENDMENT

Rev. No.	Date	Amendment	Purpose
1	20200217	PHASE 2-CP	AMENDMENT

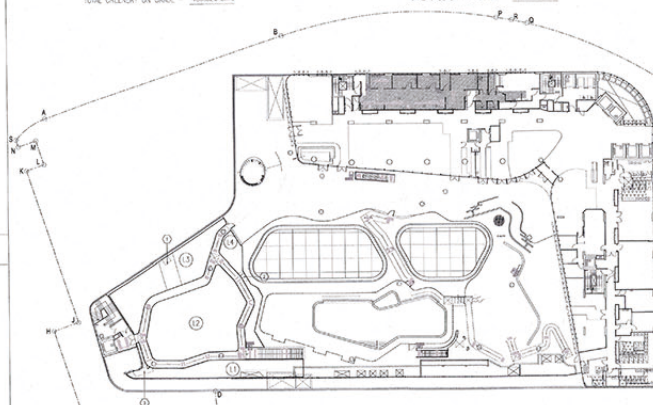
Rev. No.	Date	Amendment	Purpose
1	20200217	PHASE 2-CP	AMENDMENT

Rev. No.	Date	Amendment	Purpose
1	20200217	PHASE 2-CP	AMENDMENT

Rev. No.	Date	Amendment	Purpose
1	20200217	PHASE 2-CP	AMENDMENT

SITE COVERAGE OF GREENERY CALCULATION AT LEVEL 9 FLOOR

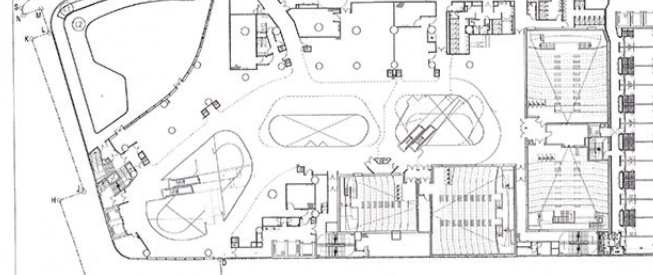
FOR OTHER GREENERY:
 L1 = 94,543 s.m.
 L2 = 206,144 s.m.
 L3 = 138,327 s.m.
 L4 = 48,748 s.m.
 SUB-TOTAL = 567,762 s.m.
 SUBJECT: 1 = 1,824 s.m.
 2 = 1,102 s.m.
 3 = 4,238 s.m.
 SUB-TOTAL = 7,164 s.m.
 TOTAL GREENERY ON GROUND = 574,926 s.m.



SITE COVERAGE OF GREENERY DIAGRAM AT LEVEL 9 FLOOR

SITE COVERAGE OF GREENERY CALCULATION AT LEVEL 6 FLOOR

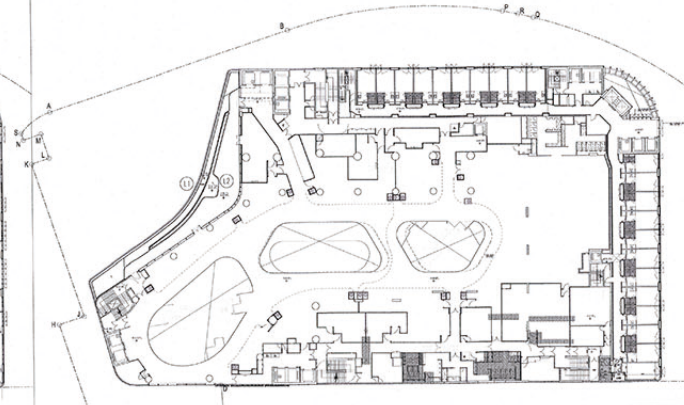
FOR OTHER GREENERY:
 L1 = 44,885 s.m.
 L2 = 206,288 s.m.
 TOTAL GREENERY ON GROUND = 251,173 s.m.



SITE COVERAGE OF GREENERY DIAGRAM AT LEVEL 6 FLOOR

SITE COVERAGE OF GREENERY CALCULATION AT LEVEL 7 FLOOR

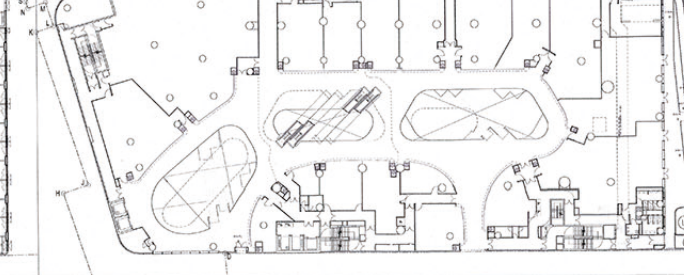
FOR OTHER GREENERY:
 L1 = 22,248 s.m.
 L2 = 27,535 s.m.
 TOTAL GREENERY ON GROUND = 49,783 s.m.



SITE COVERAGE OF GREENERY DIAGRAM AT LEVEL 7 (RETAIL) FLOOR

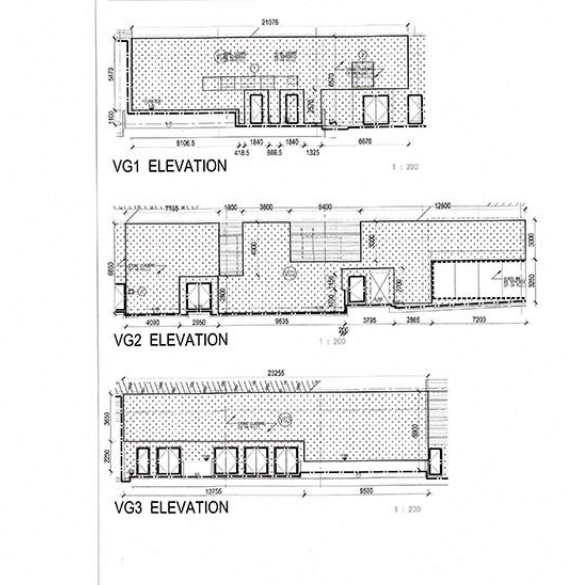
SITE COVERAGE OF GREENERY CALCULATION AT LEVEL 4 FLOOR

FOR OTHER GREENERY:
 L1 = 20,882 s.m.
 L2 = 20,288 s.m.
 TOTAL GREENERY ON GROUND = 41,170 s.m.

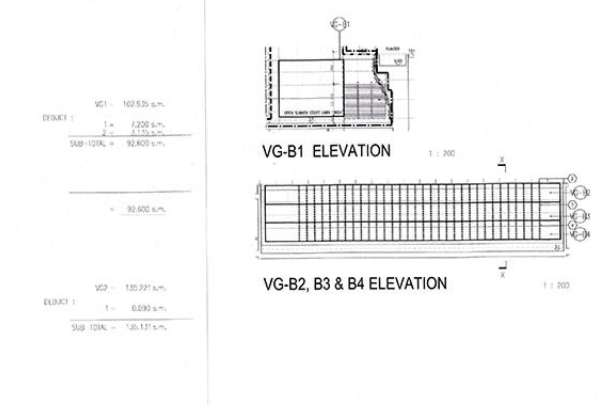


SITE COVERAGE OF GREENERY DIAGRAM AT LEVEL 4 FLOOR

OTHER GREENING FEATURES CALCULATION: FOR PRIMARY ZONE:



SITE COVERAGE OF GREENERY DIAGRAM AT GROUND FLOOR - VERTICAL GREENING (VG)



SITE COVERAGE OF GREENERY DIAGRAM AT BASEMENT 1 FLOOR - VERTICAL GREENING (VG-B)

This plan has been prepared on a computerized system using the latest software. The user shall be responsible for the accuracy of the data entered into the system. The user shall be responsible for the accuracy of the data entered into the system. The user shall be responsible for the accuracy of the data entered into the system.

Plan Approved
 TONG Fung-ling, Fiona
 Senior Building Surveyor
 for BUILDING AUTHORITY
 31 MAR 2020

PAUL K. F. NG

SUSTAINABLE BUILDING DESIGN DEMONSTRATION (3)
 For B.D. SUBMISSION
 Dated: 17 FEBRUARY 2020
AMENDMENT
 B.A. (AS) MARCH
 Registered Architect (HK)
 Authorized Person (Architect)

iwk&partners
 architects