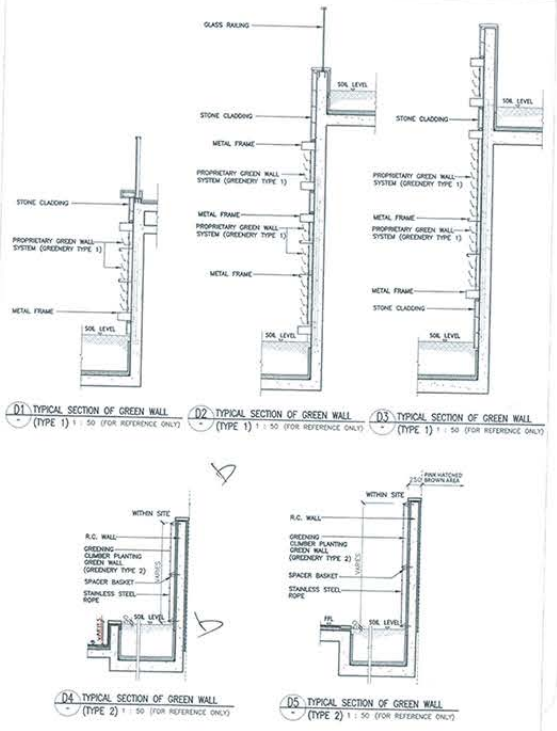
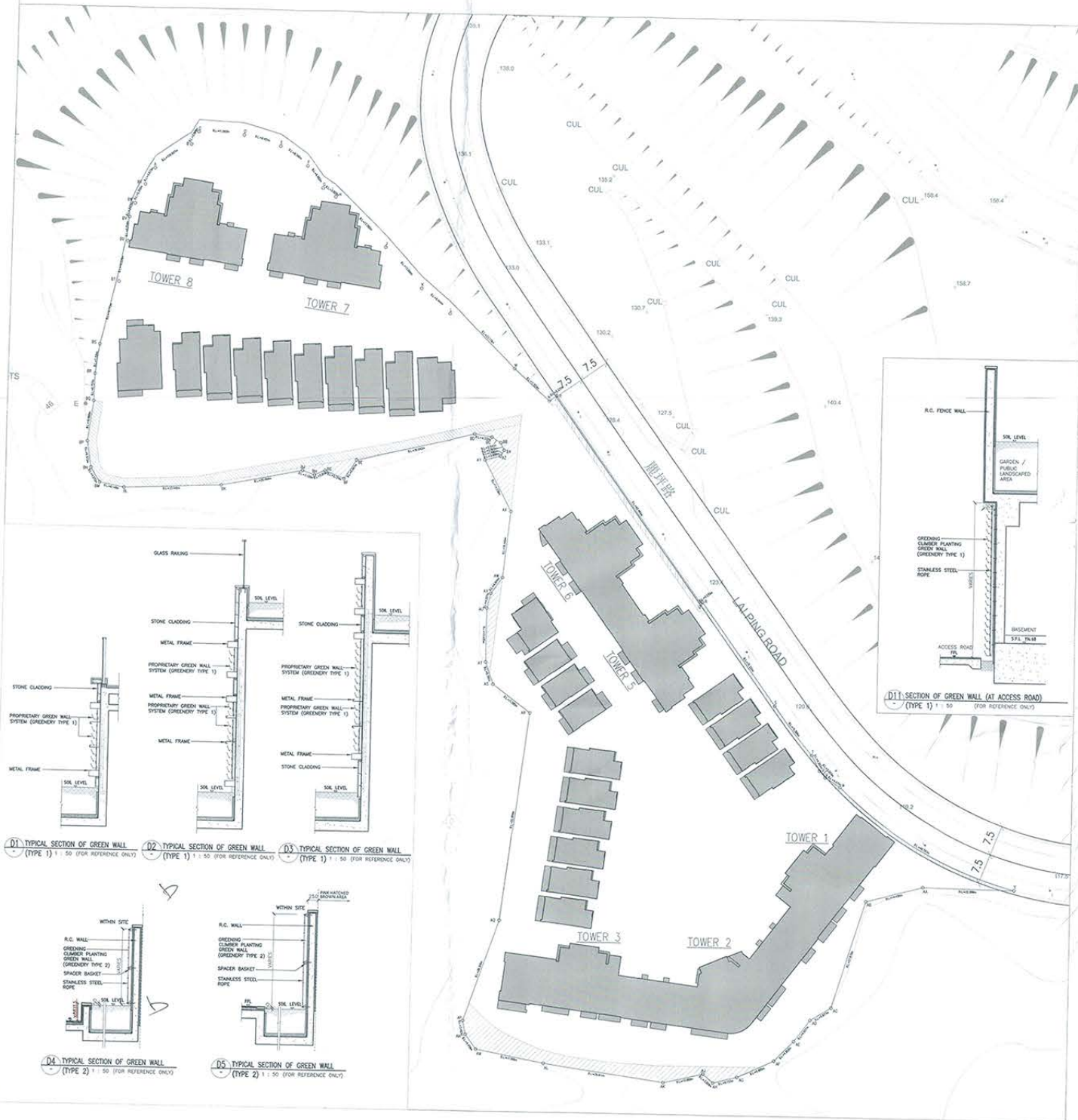


BUILDING SET BACK  
SCALE 1:500

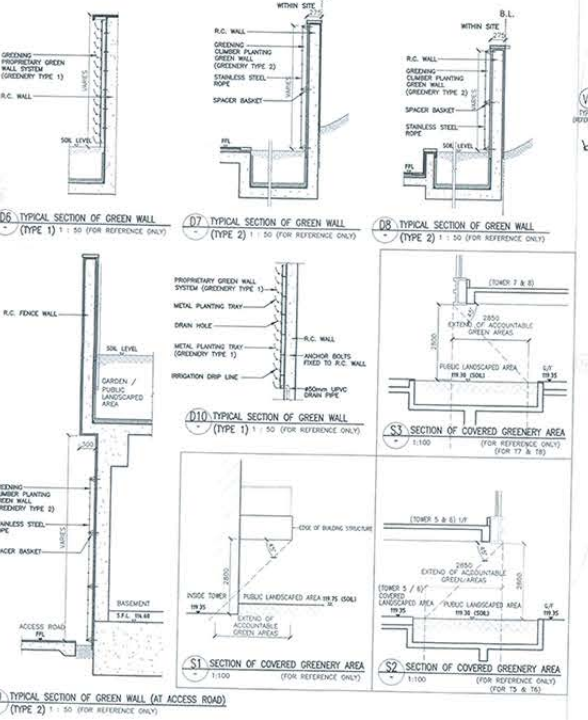
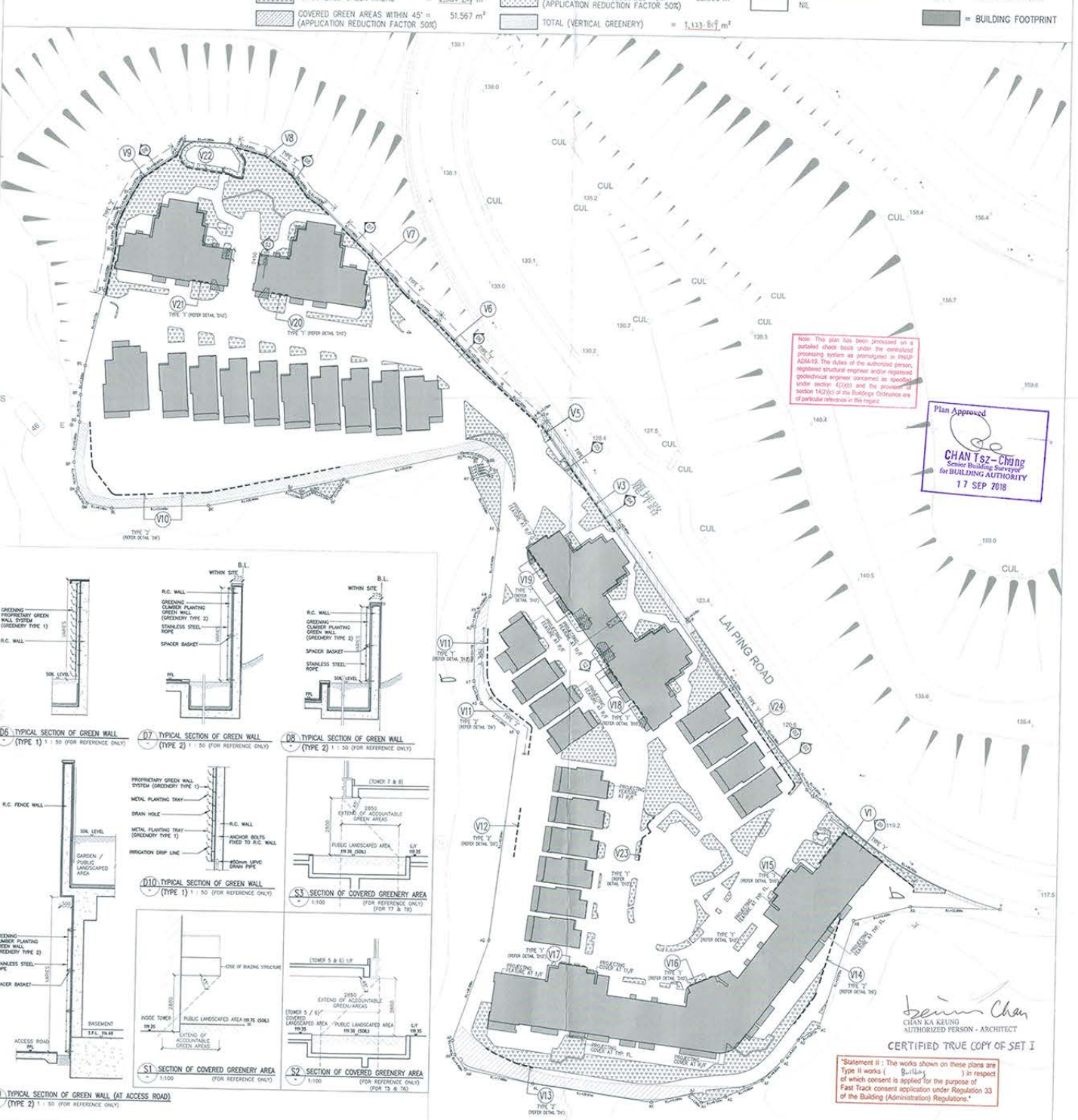
NOTE: 1. HOUSE NO. H4, H13, H14 & H24 & TOWER NO. T4 & FLOOR NO. 4/F TO BE DELETED FROM NUMBERING.

LEGEND:  
= BUILDING FOOTPRINT



SITE COVERAGE OF GREENERY  
SCALE 1:500

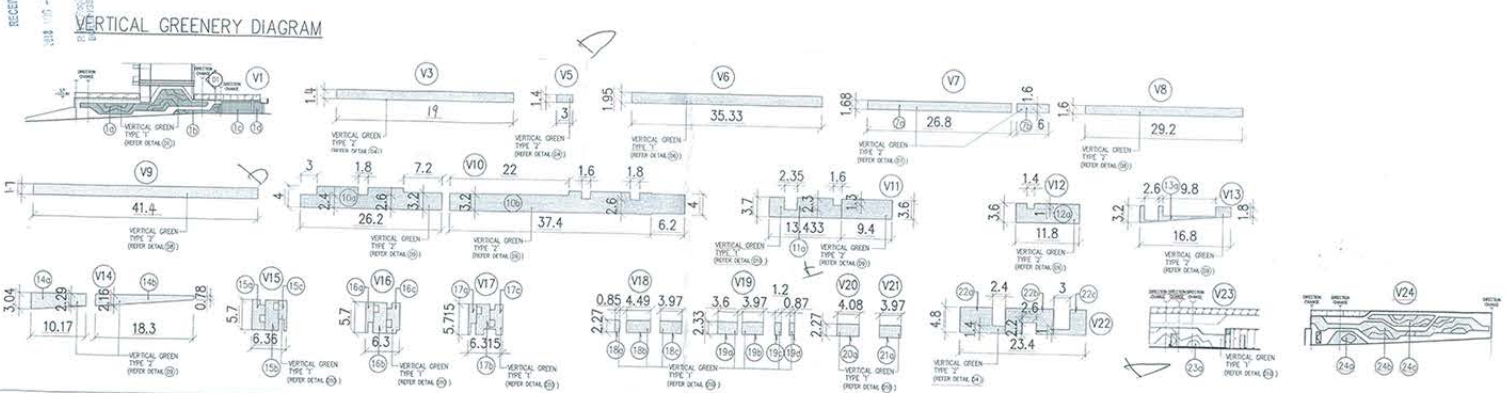
LEGEND:  
PEDESTRIAN ZONE GREENERY AREA  
UNCOVERED GREEN AREAS = 2,380.249 m<sup>2</sup>  
COVERED GREEN AREAS WITHIN 45' = 51,567 m<sup>2</sup> (APPLICATION REDUCTION FACTOR 50%)  
TOTAL (VERTICAL GREENERY) = 1,133.811 m<sup>2</sup>  
NON-PEDESTRIAN ZONE GREENERY AREA = NIL  
DRAIN POINT  
IRRIGATION POINT  
= BUILDING FOOTPRINT



Plan Approved  
CHAN Tsz-Ching  
Senior Building Surveyor  
FOR BUILDING AUTHORITY  
17 SEP 2018

Chan Ka Keung  
AUTHORIZED PERSON - ARCHITECT  
CERTIFIED TRUE COPY OF SET I

\*Statement II: The works shown on these plans are Type II works (S.I.II) as respect of which consent is applied for the purpose of Fast Track consent application under Regulation 33 of the Building (Administration) Regulations.\*



PEDESTRIAN ZONE VERTICAL GREENERY AREA

V1	34.452 + 4.845 + 12.040 + 3.457	= 54.804 m <sup>2</sup>	V19	0.85 + 4.49 + 3.97	= 9.31 m <sup>2</sup>
V2	11.000 x 1.400	= 15.400 m <sup>2</sup>	V20	4.08 + 3.97	= 8.05 m <sup>2</sup>
V3	11.115 x 2.30	= 25.565 m <sup>2</sup>	V21	2.27	= 2.27 m <sup>2</sup>
V4	3.000 x 1.40	= 4.200 m <sup>2</sup>	V22	4.8	= 4.8 m <sup>2</sup>
V5	35.330 x 1.950	= 68.894 m <sup>2</sup>	V23	2.4	= 2.4 m <sup>2</sup>
V6	17.000 + 1.400 + 9.400	= 27.800 m <sup>2</sup>	V24	2.6	= 2.6 m <sup>2</sup>
V7	41.40 x 1.70	= 70.380 m <sup>2</sup>			
V8	41.740 + 187.160	= 228.900 m <sup>2</sup>			
V9	11.439 + 13.065 + 6.421	= 30.925 m <sup>2</sup>			
V10	6.285 + 13.000 + 10.944	= 30.230 m <sup>2</sup>			
V11	6.101 + 11.947 + 10.295	= 28.343 m <sup>2</sup>			
V12	1.930 + 10.192 + 9.012	= 21.134 m <sup>2</sup>			
V13	8.388 + 9.250 + 2.796 + 2.027	= 22.461 m <sup>2</sup>			
V14	9.262	= 9.262 m <sup>2</sup>			
V15	9.012	= 9.012 m <sup>2</sup>			
V16	32.160 + 37.480 + 17.400	= 87.040 m <sup>2</sup>			
V17	7.656	= 7.656 m <sup>2</sup>			
V18	41.680	= 41.680 m <sup>2</sup>			
V19	11.839 + 56.520 + 16.201	= 84.560 m <sup>2</sup>			
V20	16.927 + 2.035 + 7.360	= 26.322 m <sup>2</sup>			
Total VERTICAL GREENERY FEATURE AREA =		1,133.811 m <sup>2</sup>			

CALCULATIONS FOR SITE COVERAGE OF GREENERY AREA

SITE AREA	= 17476 m <sup>2</sup>
TOTAL GREENERY AREA REQUIRE (C)	= 17476 m <sup>2</sup> x 20% = 3495.200 m <sup>2</sup>
ACTUAL UNCOVERED GREENERY PROVIDED	= 2,380.209 m <sup>2</sup>
ACTUAL COVERED GREENERY AREA WITHIN 45' PROVIDED	= 103.133 m <sup>2</sup> x 50% (50% REDUCTION) = 51.567 m <sup>2</sup>
ACTUAL GREENERY AREA ALONG INACCESSIBLE FLAT ROOF PROVIDED	= 45.380 m <sup>2</sup> x 50% (50% REDUCTION) = 22.690 m <sup>2</sup>
ACTUAL HORIZONTAL GREENERY AREA PROVIDED (A)	= 2,380.209 + 51.567 + 22.690 m <sup>2</sup> = 2,454.466 m <sup>2</sup>
TOTAL GREENERY AREA REQUIRED AT PEDESTRIAN ZONE	= 17476 m <sup>2</sup> x 10% = 1747.60 m <sup>2</sup>
ACTUAL GREENERY AREA AT PEDESTRIAN ZONE PROVIDED	= 3,503.026 m <sup>2</sup> > 1747.60 m <sup>2</sup>
MAX. PROVISION OF GREENING FEATURE (B)	= 30% OF TOTAL GREENERY AREA = 3,495.200 m <sup>2</sup> x 30% = 1,048.560 m <sup>2</sup>
ACTUAL GREENERY FEATURE PROVIDED	= 1,123.811 m <sup>2</sup> > 1,048.560 m <sup>2</sup> (MAX.)
ACCOUNTABLE GREENERY AREA PROVIDED = (A) + (B) UNDER BO	= (2,454.466 + 1,048.560) m <sup>2</sup> = 3,503.026 m <sup>2</sup> > 3,495.200 m <sup>2</sup> (C)

Rev.	Description	Drawn	Checked	Approved	Date	Rev.	Description	Drawn	Checked	Approved	Date
1	PREP SUBMISSION	SK	TWS	CPC	28/05/14	1					
2	PREP SUBMISSION	SK	TWS	CPC	28/05/14	2					
3	GENERAL REVISION	SK	TWS	CPC	28/05/14	3					
4	GENERAL REVISION	SK	TWS	CPC	28/05/14	4					
5	GENERAL REVISION	SK	TWS	CPC	28/05/14	5					
6	GENERAL REVISION	SK	TWS	CPC	28/05/14	6					
7	GENERAL REVISION	SK	TWS	CPC	28/05/14	7					
8	GENERAL REVISION	SK	TWS	CPC	28/05/14	8					
9	GENERAL REVISION	SK	TWS	CPC	28/05/14	9					

百利保發展顧問有限公司  
Paliburg Development Consultants Limited

PROPOSED RESIDENTIAL DEVELOPMENT  
AT SHA TIN TOWN LOT NO.578 AREA 56A,  
LAI PING ROAD, KAU TO, N.T.

Drawing Title:  
SBDG CALCULATION (3)

Project No: 13189NT Issue Date: 30 MAY 2014  
Authorised Person's Signature: Chan Ka Keung  
Drawing No: A/GBP/041  
FOR BUILDINGS DEPARTMENT  
AMENDED PLAN