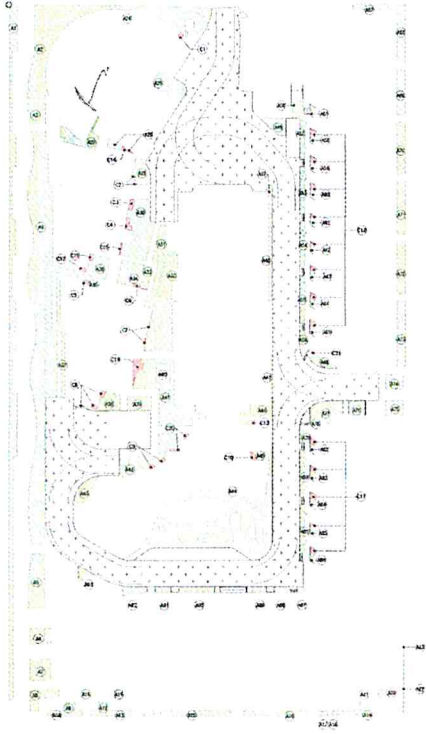


STATEMENT II: THE WORKS SHOWN ON THESE PLANS ARE TYPE II WORKS (BUILDING WORKS) IN RESPECT OF WHICH CONSENT IS APPLIED FOR THE PURPOSE OF FAST TRACK CONSENT APPLICATION UNDER REGULATION 33 OF THE BUILDING (ADMINISTRATION) REGULATIONS.

GREENERY AREA & PRIVATE OPEN SPACE AT GROUND FLOOR  
(PROP. APP-170 & LEAS. 5220)

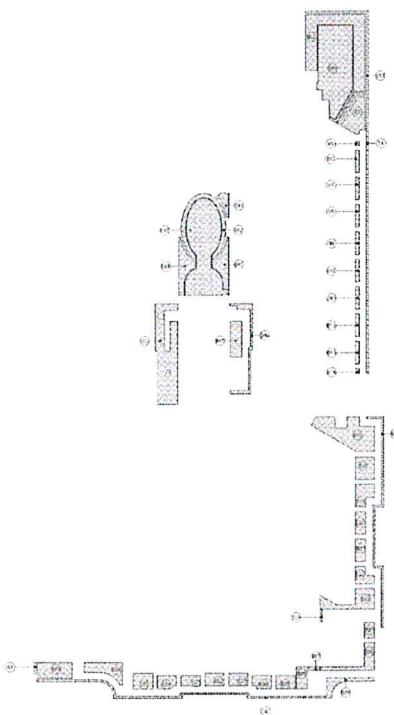


GREENWAY AREA AT GROUND FLOOR:		GREENERY AREA (BERRY COVER)	
01	107.473	01	1325
02	104.766	02	5348
03	252.88	03	2133
04	476.53	04	4323
05	397.81	05	1773
06	71.482	06	1196
07	58.832	07	2737
08	27.831	08	8223
09	8.722	09	1480
10	102.13	10	2202
11	57.78	11	8209
12	37.75	12	1214
13	217.73	13	1241
14	174.2	14	2228
15	282.64	15	1482
16	243.02	16	1892
17	12.19	17	137
18	137.9	18	1040
19	75.24	19	328
20	2.76	20	838
21	17.72	21	488
22	25.57	22	8823
23	6.90		
24	159.1		
25	84.7		
26	15.115		
27	87.6		
28	26.27		
29	163.11		
30	41.51		
31	4.88		
32	42.75		
33	12.4		
34	32.09		
35	22.81		
36	23.81		
37	24.73		
38	12.5		
39	44.12		
40	47.37		
41	27.98		
42	284.75		
43	14.72		
44	21.72		
45	1.81		
46	224.5		
47	21.73		
48	142.9		
49	147.1		
50	113.8		
51	143.1		
52	143.2		
53	143.3		
54	21.1		
55	57.8		
56	1.57		
57	1.89		
58	11.96		
59	16.2		
60	13.0		
61	16.7		
62	14.1		
63	1.89		
64	11.96		
65	16.2		
66	13.0		
67	16.7		
68	14.1		
69	1.89		
70	11.96		
71	16.2		
72	13.0		
73	16.7		
74	14.1		
75	1.89		
76	11.96		
77	16.2		
78	13.0		
79	16.7		
80	14.1		
81	1.89		
82	11.96		
83	16.2		
84	13.0		
85	16.7		
86	14.1		
87	1.89		
88	11.96		
89	16.2		
90	13.0		
91	16.7		
92	14.1		
93	1.89		
94	11.96		
95	16.2		
96	13.0		
97	16.7		
98	14.1		
99	1.89		
100	11.96		
101	16.2		
102	13.0		
103	16.7		
104	14.1		
105	1.89		
106	11.96		
107	16.2		
108	13.0		
109	16.7		
110	14.1		
111	1.89		
112	11.96		
113	16.2		
114	13.0		
115	16.7		
116	14.1		
117	1.89		
118	11.96		
119	16.2		
120	13.0		
121	16.7		
122	14.1		
123	1.89		
124	11.96		
125	16.2		
126	13.0		
127	16.7		
128	14.1		
129	1.89		
130	11.96		
131	16.2		
132	13.0		
133	16.7		
134	14.1		
135	1.89		
136	11.96		
137	16.2		
138	13.0		
139	16.7		
140	14.1		
141	1.89		
142	11.96		
143	16.2		
144	13.0		
145	16.7		
146	14.1		
147	1.89		
148	11.96		
149	16.2		
150	13.0		
151	16.7		
152	14.1		
153	1.89		
154	11.96		
155	16.2		
156	13.0		
157	16.7		
158	14.1		
159	1.89		
160	11.96		
161	16.2		
162	13.0		
163	16.7		
164	14.1		
165	1.89		
166	11.96		
167	16.2		
168	13.0		
169	16.7		
170	14.1		
171	1.89		
172	11.96		
173	16.2		
174	13.0		
175	16.7		
176	14.1		
177	1.89		
178	11.96		
179	16.2		
180	13.0		
181	16.7		
182	14.1		
183	1.89		
184	11.96		
185	16.2		
186	13.0		
187	16.7		
188	14.1		
189	1.89		
190	11.96		
191	16.2		
192	13.0		
193	16.7		
194	14.1		
195	1.89		
196	11.96		
197	16.2		
198	13.0		
199	16.7		
200	14.1		
TOTAL	81,325		

TOTAL ACCORDABLE GREENERY AT GROUND FLOOR  
= 223,616 sqm (19,712 x 11,340) sqm  
= 270,415 sqm

FLOOR PLAN FOR GREENERY AT GROUND LEVEL 1:500

GREENERY AREA AT LOW ZONE  
(PROP. APP-170)



01	2.04
02	43.22
03	43.09
04	43.85
05	1.28
06	7.96
07	7.43
08	7.43
09	7.43
10	7.43
11	7.43
12	7.43
13	7.43
14	7.43
15	7.43
16	10.21
17	42.24
18	24.17
19	26.40
20	12.70
21	12.70
22	12.70
23	12.70
24	12.70
25	12.70
26	12.70
27	12.70
28	12.70
29	12.70
30	12.70
31	12.70
32	12.70
33	12.70
34	12.70
35	12.70
36	12.70
37	12.70
38	12.70
39	12.70
40	12.70
41	12.70
42	12.70
43	12.70
44	12.70
45	12.70
46	12.70
47	12.70
48	12.70
49	12.70
50	12.70
51	12.70
52	12.70
53	12.70
54	12.70
55	12.70
56	12.70
57	12.70
58	12.70
59	12.70
60	12.70
61	12.70
62	12.70
63	12.70
64	12.70
65	12.70
66	12.70
67	12.70
68	12.70
69	12.70
70	12.70
71	12.70
72	12.70
73	12.70
74	12.70
75	12.70
76	12.70
77	12.70
78	12.70
79	12.70
80	12.70
81	12.70
82	12.70
83	12.70
84	12.70
85	12.70
86	12.70
87	12.70
88	12.70
89	12.70
90	12.70
91	12.70
92	12.70
93	12.70
94	12.70
95	12.70
96	12.70
97	12.70
98	12.70
99	12.70
100	12.70
TOTAL	107,789

FLOOR PLAN FOR GREENERY AT LOW ZONE 1:500

TOTAL GREENERY AREA CALCULATIONS  
(ENVIRONMENTAL IMP. UNIT 92)

NET AREA = 71,276 sqm  
TOTAL GREENWAY AREA = 228.29 sqm  
TOTAL = 71,504.29 sqm = 0.341 BCU sqm

GREENWAY AREA REQUIREMENT FOR 1% OF SITE COVER OF TOTAL GREENWAY MEAN FERTILIZATION ZONE = 212.08 sqm + 155 = 367.08 sqm

NET AREA OF COVER = 228.29 sqm  
GREENWAY REQUIREMENT = 367.08 sqm

A) ACTUAL GREENWAY AREA PROVIDED  
1) GREENWAY AREA = 228.29 sqm  
TOTAL = 495.37 sqm

B) OTHER GREENWAY FEATURES (REFER TO ENV. REC. C-10)  
= 495.37 sqm (1:197,800 sqm to ALL ACCORDANCE)

WORK GREENWAY AREA  
1) GREENWAY AREA = 495.37 sqm  
2) OTHER GREENWAY FEATURES = 197,800 sqm  
TOTAL = 198,295.37 sqm (1:198,295.37 sqm)

B) TOTAL IMPROVEMENT AT GREENWAY ZONE  
1) GREENWAY AREA = 495.37 sqm  
2) OTHER GREENWAY FEATURES = 197,800 sqm  
TOTAL = 198,295.37 sqm

C) OTHER GREENWAY AREA FEATURES  
= 495.37 sqm + 197,800 sqm = 198,295.37 sqm

TOTAL GREENWAY AT (COMBINE) ZONE  
= 228.29 + 198,295.37 = 198,523.66 sqm (1:198,523.66 sqm)

THIS PLAN AND THE INFORMATION CONTAINED THEREIN ARE THE PROPERTY OF PANG SO WAI ARCHITECTS AND ENGINEERS LTD. ANY REPRODUCTION OR DISTRIBUTION OF THIS PLAN WITHOUT THE WRITTEN PERMISSION OF PANG SO WAI ARCHITECTS AND ENGINEERS LTD. IS STRICTLY PROHIBITED. THIS PLAN IS VALID FOR THE PURPOSE OF FAST TRACK CONSENT APPLICATION UNDER REGULATION 33 OF THE BUILDING (ADMINISTRATION) REGULATIONS.

Plan Approved by  
LEUNG CHIAU-KU  
Senior Planning Supervisor  
BUILDING AUTHORITY  
2 9 JUL 2024

Chartered  
PANG SO WAI  
Architects & Engineers Ltd.  
B.D. COPY

NO.	DATE	BY	REVISION
1	17/07/24	BSW	ISSUE FOR PERMIT
2	17/07/24	BSW	REVISED
3	17/07/24	BSW	REVISED
4	17/07/24	BSW	REVISED
5	17/07/24	BSW	REVISED
6	17/07/24	BSW	REVISED
7	17/07/24	BSW	REVISED
8	17/07/24	BSW	REVISED
9	17/07/24	BSW	REVISED
10	17/07/24	BSW	REVISED

PROJECT / DRAWING  
PROPOSED COMPOSITE DEVELOPMENT AT TAI KONG KIN ON TOWN LOT NO. 95

DRAWING / SHEET  
SITE CALCULATION - SITE COVERAGE OF GREENWAY (SHEET 1 OF 2)

SCALE / C/S  
1:500  
DATE / P/S  
17/07/24  
NO. / SHEET  
0-50

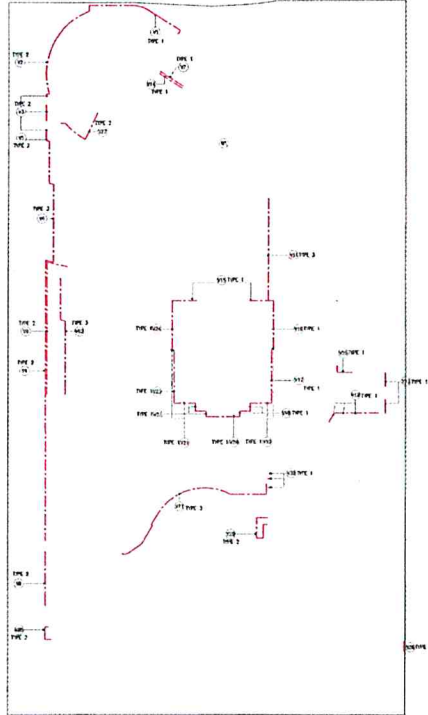
DESIGNED / BY  
CHEN / BS

CHECKED / BY  
CHEN / BS

APPROVED / BY  
CHEN / BS

STATEMENT II - THE WORKS SHOWN ON THESE PLANS ARE TYPE II WORKS (BUILDING WORKS) IN RESPECT OF WHICH CONSENT IS APPLIED FOR THE PURPOSE OF FAST TRACK CONSENT APPLICATION UNDER REGULATION 33 OF THE BUILDING (ADMINISTRATION) REGULATIONS.

1. NOTES  
1. THE PRUNING AND MAINTENANCE OF VERTICAL GREENERY SHOULD BE ACCESSED BY MOVABLE PLATFORM.



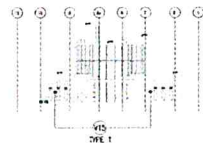
SCREENED AREA FOR VERTICAL GREENING (PUMP AFF-122)

SCREENED AREA PER FLOOR (SCREENING):

(1)	7278	sqm
(2)	7149	sqm
(3)	3274	sqm
(4)	11430	sqm
(5)	1721	sqm
(6)	10067	sqm
(7)	2774	sqm
(8)	18243	sqm
(9)	4041	sqm
(10)	1679	sqm
(11)	11146	sqm
(12)	6137	sqm
(13)	1674	sqm
(14)	1241	sqm
(15)	4740	sqm
(16)	4104	sqm
(17)	8307	sqm
(18)	740	sqm
(19)	2119	sqm
(20)	1070	sqm
(21)	11471	sqm
(22)	740	sqm
(23)	10711	sqm
(24)	4280	sqm
(25)	3101	sqm
(26)	1123	sqm
(27)	1174	sqm
(28)	1721	sqm
(29)	7131	sqm
(30)	740	sqm
(31)	11471	sqm
(32)	10711	sqm
PUMP	10274	sqm

SCREENED AREA FOR WATER FEATURES:  
 20' x 20' 27.00' x 20.00' = 11250 sqm  
 20' x 20' 12.00' x 20.00' = 9600 sqm

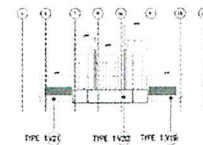
TOTAL SCREENED AREA FOR OTHER SCREENED FACILITIES:  
 VERTICAL GREENING = 143870 sqm  
 WATER FEATURES = 20850 sqm  
 TOTAL = 164720 sqm



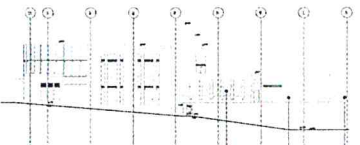
NORTH ELEVATION OF RESIDENTIAL FACILITIES



EAST ELEVATION OF RESIDENTIAL FACILITIES

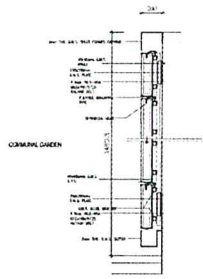


SOUTH ELEVATION OF RESIDENTIAL FACILITIES

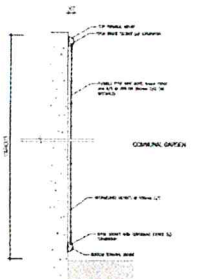


WEST ELEVATION OF RESIDENTIAL FACILITIES

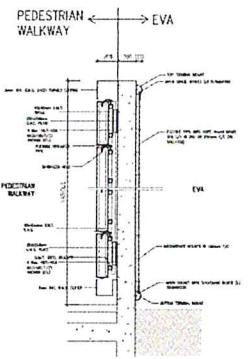
FLOOR PLAN FOR VERTICAL GREENERY 1:500



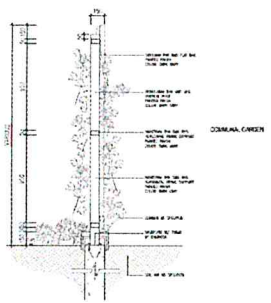
SECTION A  
VERTICAL GREEN WALL  
TYPE 1 SECTION



SECTION B  
VERTICAL GREEN WALL  
TYPE 2 SECTION



SECTION C  
VERTICAL GREEN WALL  
TYPE 12 SECTION



SECTION D  
VERTICAL GREEN WALL  
TYPE 3 SECTION

This Plan has been approved in principle under Section 33 of the Building (Administration) Regulations for the purpose of fast track consent application under Regulation 33 of the Building (Administration) Regulations.

Plan Approved  
 EXHIBIT 16  
 Submission Supporting Application for BUILDING PERMISSION  
 28 FEB 2018

*Clare Wong*  
 PANG SO WA  
 Authorized Person  
 B.D. COPY

NO.	DATE	REVISION
1	2017-07-19	FOR APPROVAL
2	2017-07-27	FOR APPROVAL
3	2017-07-27	FOR APPROVAL
4	2017-07-27	FOR APPROVAL
5	2017-07-27	FOR APPROVAL
6	2017-07-27	FOR APPROVAL
7	2017-07-27	FOR APPROVAL
8	2017-07-27	FOR APPROVAL
9	2017-07-27	FOR APPROVAL
10	2017-07-27	FOR APPROVAL

PROJECT / SHEET  
 PROPOSED COMMERCIAL DEVELOPMENT AT TONGKIN PARK 3 TOWER LOT NO. 05  
 DRAWING / NO.  
 SITE CALCULATION - SITE COVERAGE OF GREENERY (SHEET 2 OF 2)

DATE / DR	NO. DRAWING / REVISED
14 / 2017	4150
14 / 2017	4150
14 / 2017	4150

DESIGNED / DR  
 CHECKED / BA  
 APPROVED / BA