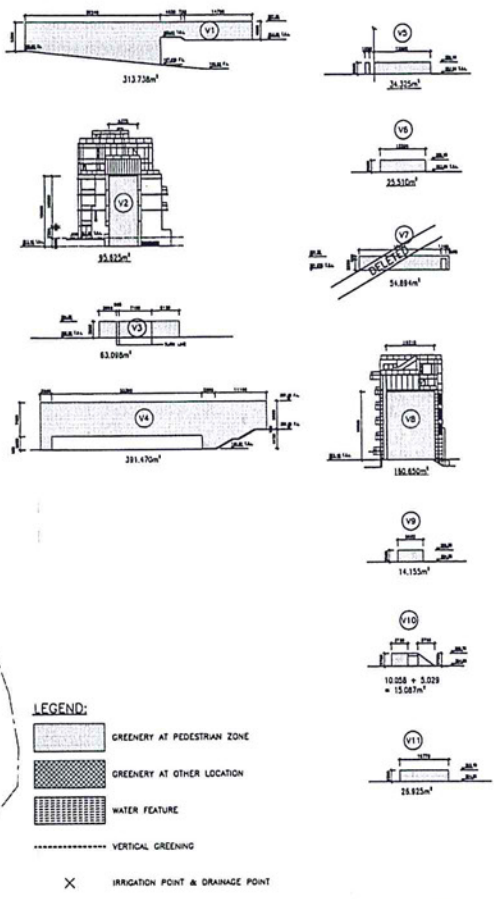
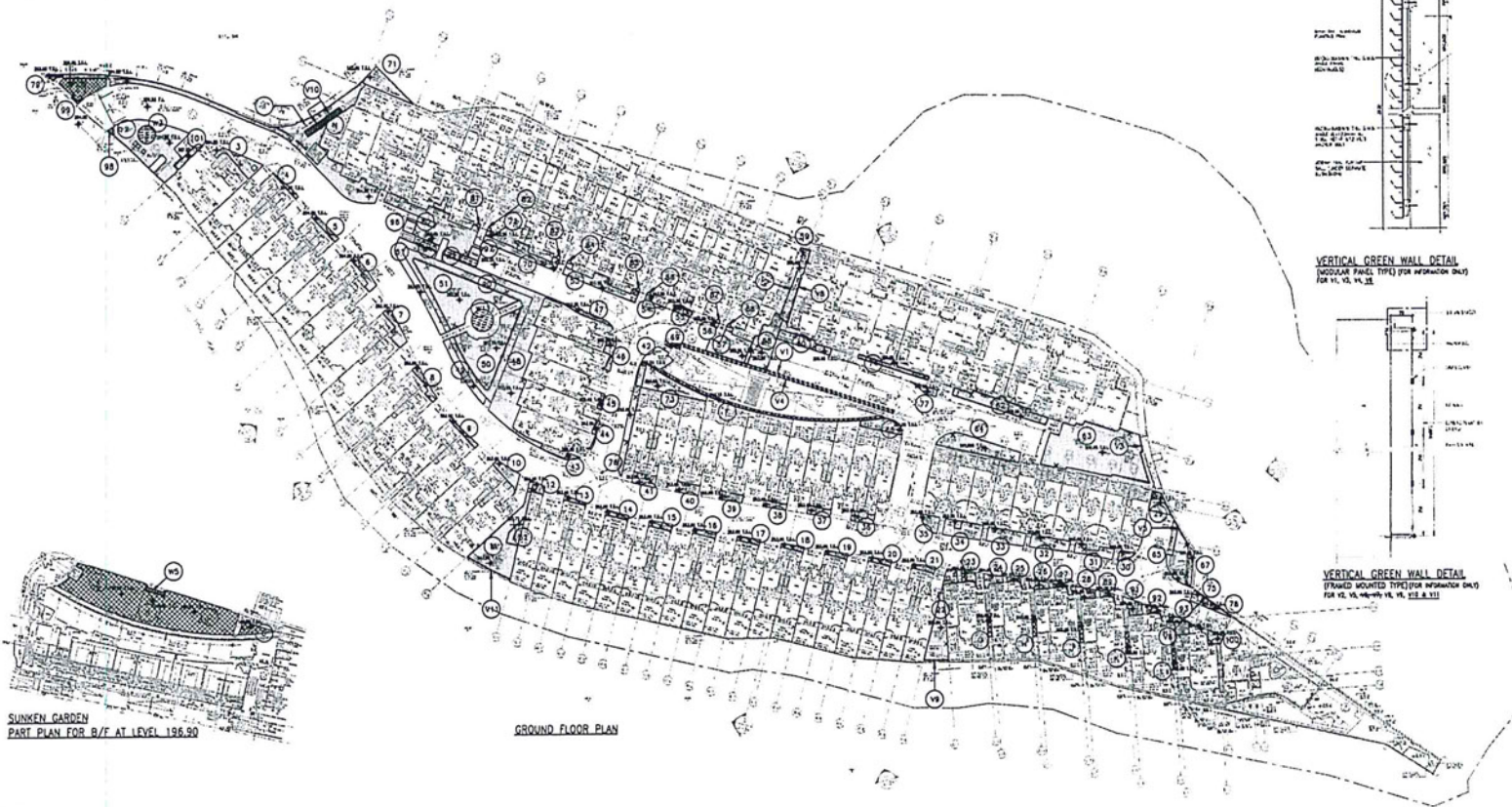


SITE COVERAGE OF GREENERY
(PNAP APP-152 AND SPECIAL CONDITIONS (9) REFERRED)



CALCULATION FOR SITE COVERAGE OF GREENERY:

| GREENERY AREA AT PEDESTRIAN ZONE | | | | | | GREENERY AREA AT OTHER LOCATION | | | | | | VERTICAL GREENING / WATER FEATURE / GRASS PAVER AREA | | | | | | REQUIRED GREENERY AREA | | MAX. ALLOWED VERTICAL GREENING / WATER FEATURE AREA | | TOTAL GREENERY AREA | | S.C. OF GREENERY AREA | | S.C. OF GREENERY AREA AT PEDESTRIAN ZONE | |
|--|---|-----------------|-------------------------------|-----------------------------------|-----------------|--|----------------------------------|--------------|--|--|--|--|--|--|--|--|---|------------------------|---|---|--|---------------------|--|-----------------------|--|--|--|
| 1 = 188.821 - 11.550 - 0.587 = 176.684 m² | 18 = 5.445 m² | 35 = 12.405 m² | 52 = 10.806 m² | 69 = 3.318 m² | 86 = 0.536 m² | A = 120.288 - (8.440 + 3) = 111.848 m² | V1 = 313.736 m² | = 313.736 m² | = 20% OF SITE AREA = 19700 x 20% = 3940 m² | | = 30% OF TOTAL REQUIRED GREENERY AREA = 30% x 3940 = 1182 m² | | = 2386.526 + 382.304 + 1187.472 = 3956.302 m² | | = (3956.304 / 19700) x 100% = 20.082 % (>20%, i.e. complied) | | = (2386.526 / 19700) x 100% = 12.163 % (>10%, i.e. complied) | | PROJECT PROPOSED RESIDENTIAL DEVELOPMENT AT SITL 567, AREA 56A KAU TO, SHATIN, NT | | | | | | | | |
| 2 = 153.518 - 12.588 - (0.840 + 0.23) = 140.057 m² | 19 = 5.418 m² | 36 = 9.091 m² | 53 = 38.837 m² | 70 = 33.108 m² | 87 = 0.536 m² | B = 32.818 m² | V2 = 22.622 m² | = 22.622 m² | = 30% OF TOTAL REQUIRED GREENERY AREA = 30% x 3940 = 1182 m² | | = 2386.526 + 382.304 + 1187.472 = 3956.302 m² | | = (3956.304 / 19700) x 100% = 20.082 % (>20%, i.e. complied) | | = (2386.526 / 19700) x 100% = 12.163 % (>10%, i.e. complied) | | P&T Architects and Engineers Ltd | | | | | | | | | | |
| 3 = 102.422 m² | 20 = 5.683 m² | 37 = 9.354 m² | 54 = 6.860 m² | 71 = 28.033 m² | 88 = 0.536 m² | C = 112.800 - (8.440 + 3) = 104.360 m² | V3 = 63.098 m² | = 63.098 m² | = 30% OF TOTAL REQUIRED GREENERY AREA = 30% x 3940 = 1182 m² | | = 2386.526 + 382.304 + 1187.472 = 3956.302 m² | | = (3956.304 / 19700) x 100% = 20.082 % (>20%, i.e. complied) | | = (2386.526 / 19700) x 100% = 12.163 % (>10%, i.e. complied) | | PROJECT PROPOSED RESIDENTIAL DEVELOPMENT AT SITL 567, AREA 56A KAU TO, SHATIN, NT | | | | | | | | | | |
| 4 = 21.359 m² | 21 = 6.242 m² | 38 = 7.325 m² | 55 = 8.841 - 1.000 = 7.841 m² | 72 = 2.053 m² | 89 = 2.815 m² | D = 124.216 - (8.440 + 3) = 115.776 m² | V4 = 391.470 m² | = 391.470 m² | = 30% OF TOTAL REQUIRED GREENERY AREA = 30% x 3940 = 1182 m² | | = 2386.526 + 382.304 + 1187.472 = 3956.302 m² | | = (3956.304 / 19700) x 100% = 20.082 % (>20%, i.e. complied) | | = (2386.526 / 19700) x 100% = 12.163 % (>10%, i.e. complied) | | PROJECT PROPOSED RESIDENTIAL DEVELOPMENT AT SITL 567, AREA 56A KAU TO, SHATIN, NT | | | | | | | | | | |
| 5 = 3.771 m² | 22 = 28.263 - 2.840 - 0.298 = 25.125 m² | 39 = 8.756 m² | 56 = 2.053 m² | 73 = 43.308 m² | 90 = 117.886 m² | E = 28.000 m² | V5 = 34.325 m² | = 34.325 m² | = 30% OF TOTAL REQUIRED GREENERY AREA = 30% x 3940 = 1182 m² | | = 2386.526 + 382.304 + 1187.472 = 3956.302 m² | | = (3956.304 / 19700) x 100% = 20.082 % (>20%, i.e. complied) | | = (2386.526 / 19700) x 100% = 12.163 % (>10%, i.e. complied) | | PROJECT PROPOSED RESIDENTIAL DEVELOPMENT AT SITL 567, AREA 56A KAU TO, SHATIN, NT | | | | | | | | | | |
| 6 = 7.909 m² | 23 = 6.772 m² | 40 = 11.896 m² | 57 = 44.485 m² | 74 = 14.204 m² | 91 = 11.816 m² | F = 26.011 m² | V6 = 25.510 m² | = 25.510 m² | = 30% OF TOTAL REQUIRED GREENERY AREA = 30% x 3940 = 1182 m² | | = 2386.526 + 382.304 + 1187.472 = 3956.302 m² | | = (3956.304 / 19700) x 100% = 20.082 % (>20%, i.e. complied) | | = (2386.526 / 19700) x 100% = 12.163 % (>10%, i.e. complied) | | PROJECT PROPOSED RESIDENTIAL DEVELOPMENT AT SITL 567, AREA 56A KAU TO, SHATIN, NT | | | | | | | | | | |
| 7 = 12.824 m² | 24 = 8.669 m² | 41 = 12.166 m² | 58 = 59.215 m² | 75 = 9.244 m² | 92 = 4.123 m² | G = 4.004 m² | V7 = 34.864 m² | = 34.864 m² | = 30% OF TOTAL REQUIRED GREENERY AREA = 30% x 3940 = 1182 m² | | = 2386.526 + 382.304 + 1187.472 = 3956.302 m² | | = (3956.304 / 19700) x 100% = 20.082 % (>20%, i.e. complied) | | = (2386.526 / 19700) x 100% = 12.163 % (>10%, i.e. complied) | | PROJECT PROPOSED RESIDENTIAL DEVELOPMENT AT SITL 567, AREA 56A KAU TO, SHATIN, NT | | | | | | | | | | |
| 8 = 10.477 m² | 25 = 2.095 m² | 42 = 42.070 m² | 59 = 28.283 m² | 76 = 10.082 m² | 93 = 12.489 m² | H = 4.004 m² | V8 = 180.850 m² | = 180.850 m² | = 30% OF TOTAL REQUIRED GREENERY AREA = 30% x 3940 = 1182 m² | | = 2386.526 + 382.304 + 1187.472 = 3956.302 m² | | = (3956.304 / 19700) x 100% = 20.082 % (>20%, i.e. complied) | | = (2386.526 / 19700) x 100% = 12.163 % (>10%, i.e. complied) | | PROJECT PROPOSED RESIDENTIAL DEVELOPMENT AT SITL 567, AREA 56A KAU TO, SHATIN, NT | | | | | | | | | | |
| 9 = 6.837 m² | 26 = 7.190 m² | 43 = 3.220 m² | 60 = 24.353 m² | 77 = 8.881 m² | 94 = 2.060 m² | I = 4.004 m² | V9 = 4.004 m² | = 4.004 m² | = 30% OF TOTAL REQUIRED GREENERY AREA = 30% x 3940 = 1182 m² | | = 2386.526 + 382.304 + 1187.472 = 3956.302 m² | | = (3956.304 / 19700) x 100% = 20.082 % (>20%, i.e. complied) | | = (2386.526 / 19700) x 100% = 12.163 % (>10%, i.e. complied) | | PROJECT PROPOSED RESIDENTIAL DEVELOPMENT AT SITL 567, AREA 56A KAU TO, SHATIN, NT | | | | | | | | | | |
| 10 = 15.716 m² | 27 = 2.018 m² | 44 = 4.718 m² | 61 = 48.929 m² | 78 = 5.162 m² | 95 = 2.000 m² | J = 4.004 m² | V10 = 15.087 m² | = 15.087 m² | = 30% OF TOTAL REQUIRED GREENERY AREA = 30% x 3940 = 1182 m² | | = 2386.526 + 382.304 + 1187.472 = 3956.302 m² | | = (3956.304 / 19700) x 100% = 20.082 % (>20%, i.e. complied) | | = (2386.526 / 19700) x 100% = 12.163 % (>10%, i.e. complied) | | PROJECT PROPOSED RESIDENTIAL DEVELOPMENT AT SITL 567, AREA 56A KAU TO, SHATIN, NT | | | | | | | | | | |
| 11 = 84.831 - 6.810 - 0.588 = 77.433 m² | 28 = 9.267 m² | 45 = 3.639 m² | 62 = 46.353 m² | 79 = 2.981 m² | 96 = 5.875 m² | K = 4.004 m² | V11 = 26.925 m² | = 26.925 m² | = 30% OF TOTAL REQUIRED GREENERY AREA = 30% x 3940 = 1182 m² | | = 2386.526 + 382.304 + 1187.472 = 3956.302 m² | | = (3956.304 / 19700) x 100% = 20.082 % (>20%, i.e. complied) | | = (2386.526 / 19700) x 100% = 12.163 % (>10%, i.e. complied) | | PROJECT PROPOSED RESIDENTIAL DEVELOPMENT AT SITL 567, AREA 56A KAU TO, SHATIN, NT | | | | | | | | | | |
| 12 = 5.909 m² | 29 = 15.552 m² | 46 = 10.984 m² | 63 = 221.166 m² | 80 = 104.771 - 0.822 = 103.949 m² | 97 = 5.875 m² | L = 4.004 m² | V12 = 18.835 m² x 50% = 9.418 m² | = 9.418 m² | = 30% OF TOTAL REQUIRED GREENERY AREA = 30% x 3940 = 1182 m² | | = 2386.526 + 382.304 + 1187.472 = 3956.302 m² | | = (3956.304 / 19700) x 100% = 20.082 % (>20%, i.e. complied) | | = (2386.526 / 19700) x 100% = 12.163 % (>10%, i.e. complied) | | PROJECT PROPOSED RESIDENTIAL DEVELOPMENT AT SITL 567, AREA 56A KAU TO, SHATIN, NT | | | | | | | | | | |
| 13 = 4.192 m² | 30 = 5.933 m² | 47 = 7.971 m² | 64 = 57.174 m² | 81 = 0.536 m² | 98 = 1.354 m² | M = 4.004 m² | V13 = 11.029 m² x 50% = 5.515 m² | = 5.515 m² | = 30% OF TOTAL REQUIRED GREENERY AREA = 30% x 3940 = 1182 m² | | = 2386.526 + 382.304 + 1187.472 = 3956.302 m² | | = (3956.304 / 19700) x 100% = 20.082 % (>20%, i.e. complied) | | = (2386.526 / 19700) x 100% = 12.163 % (>10%, i.e. complied) | | PROJECT PROPOSED RESIDENTIAL DEVELOPMENT AT SITL 567, AREA 56A KAU TO, SHATIN, NT | | | | | | | | | | |
| 14 = 5.712 m² | 31 = 17.177 m² | 48 = 171.997 m² | 65 = 29.026 m² | 82 = 0.536 m² | 99 = 1.042 m² | N = 4.004 m² | V14 = 8.101 m² x 50% = 4.051 m² | = 4.051 m² | = 30% OF TOTAL REQUIRED GREENERY AREA = 30% x 3940 = 1182 m² | | = 2386.526 + 382.304 + 1187.472 = 3956.302 m² | | = (3956.304 / 19700) x 100% = 20.082 % (>20%, i.e. complied) | | = (2386.526 / 19700) x 100% = 12.163 % (>10%, i.e. complied) | | PROJECT PROPOSED RESIDENTIAL DEVELOPMENT AT SITL 567, AREA 56A KAU TO, SHATIN, NT | | | | | | | | | | |
| 15 = 7.288 m² | 32 = 22.703 m² | 49 = 24.656 m² | 66 = 21.942 m² | 83 = 0.536 m² | 100 = 2.882 m² | O = 4.004 m² | V15 = 3.657 m² x 50% = 1.829 m² | = 1.829 m² | = 30% OF TOTAL REQUIRED GREENERY AREA = 30% x 3940 = 1182 m² | | = 2386.526 + 382.304 + 1187.472 = 3956.302 m² | | = (3956.304 / 19700) x 100% = 20.082 % (>20%, i.e. complied) | | = (2386.526 / 19700) x 100% = 12.163 % (>10%, i.e. complied) | | PROJECT PROPOSED RESIDENTIAL DEVELOPMENT AT SITL 567, AREA 56A KAU TO, SHATIN, NT | | | | | | | | | | |
| 16 = 6.360 m² | 33 = 26.746 m² | 50 = 103.476 m² | 67 = 7.792 m² | 84 = 0.536 m² | 101 = 7.833 m² | P = 4.004 m² | V16 = 3.162 m² x 50% = 1.581 m² | = 1.581 m² | = 30% OF TOTAL REQUIRED GREENERY AREA = 30% x 3940 = 1182 m² | | = 2386.526 + 382.304 + 1187.472 = 3956.302 m² | | = (3956.304 / 19700) x 100% = 20.082 % (>20%, i.e. complied) | | = (2386.526 / 19700) x 100% = 12.163 % (>10%, i.e. complied) | | PROJECT PROPOSED RESIDENTIAL DEVELOPMENT AT SITL 567, AREA 56A KAU TO, SHATIN, NT | | | | | | | | | | |
| 17 = 3.768 m² | 34 = 30.351 - 1.350 = 29.001 m² | 51 = 120.331 m² | 68 = 0.000 m² | 85 = 0.536 m² | | Q = 4.004 m² | | | = 30% OF TOTAL REQUIRED GREENERY AREA = 30% x 3940 = 1182 m² | | = 2386.526 + 382.304 + 1187.472 = 3956.302 m² | | = (3956.304 / 19700) x 100% = 20.082 % (>20%, i.e. complied) | | = (2386.526 / 19700) x 100% = 12.163 % (>10%, i.e. complied) | | PROJECT PROPOSED RESIDENTIAL DEVELOPMENT AT SITL 567, AREA 56A KAU TO, SHATIN, NT | | | | | | | | | | |
| TOTAL = 2386.526 m² | | | | | | TOTAL = 382.304 m² | | | TOTAL = 1187.472 m² < 1182 m² (MAX.) | | | | | | | | STATEMENT II: THE WORKS SHOWN ON THESE PLANS ARE TYPE II BUILDING WORKS IN RESPECT OF WHICH THE BUILDING AUTHORITY'S CONSENT IS APPLIED FOR | | | | | | | | | | |



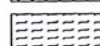
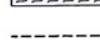
P&T Architects and Engineers Ltd
PROJECT PROPOSED RESIDENTIAL DEVELOPMENT AT SITL 567, AREA 56A KAU TO, SHATIN, NT

DATE: 1/10/2013
DRAWN: [Signature]
CHECKED: [Signature]

SCALE: 1:100
DATE: 07/2013
SHEET: C-08

STATEMENT II: THE WORKS SHOWN ON THESE PLANS ARE TYPE II BUILDING WORKS IN RESPECT OF WHICH THE BUILDING AUTHORITY'S CONSENT IS APPLIED FOR

LEGEND:

-  GREENERY AT PEDESTRIAN ZONE
-  GREENERY AT OTHER LOCATION
-  WATER FEATURE
-  VERTICAL GREENING

X IRRIGATION POINT & DRAINAGE POINT



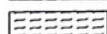



SITE COVERAGE OF GREENERY
(PNAP APP-152 AND SPECIAL CONDITIONS (9) REFERRED)

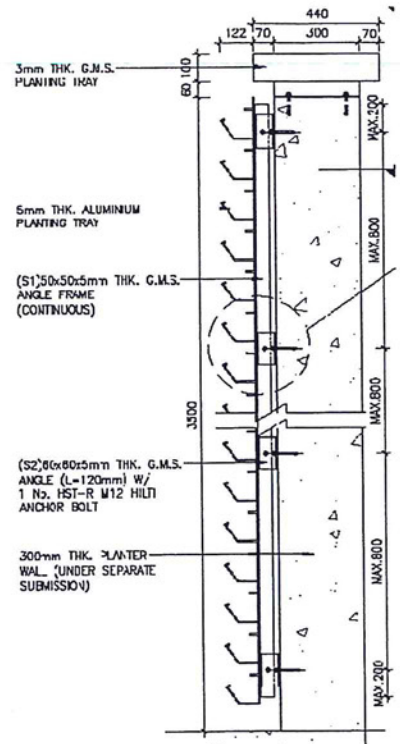
GROUND FLOOR PLAN (PART 2)

**VERTICAL GREEN WALL DETAIL
(MODULAR PANEL TYPE)
FOR V1, V3, V4**

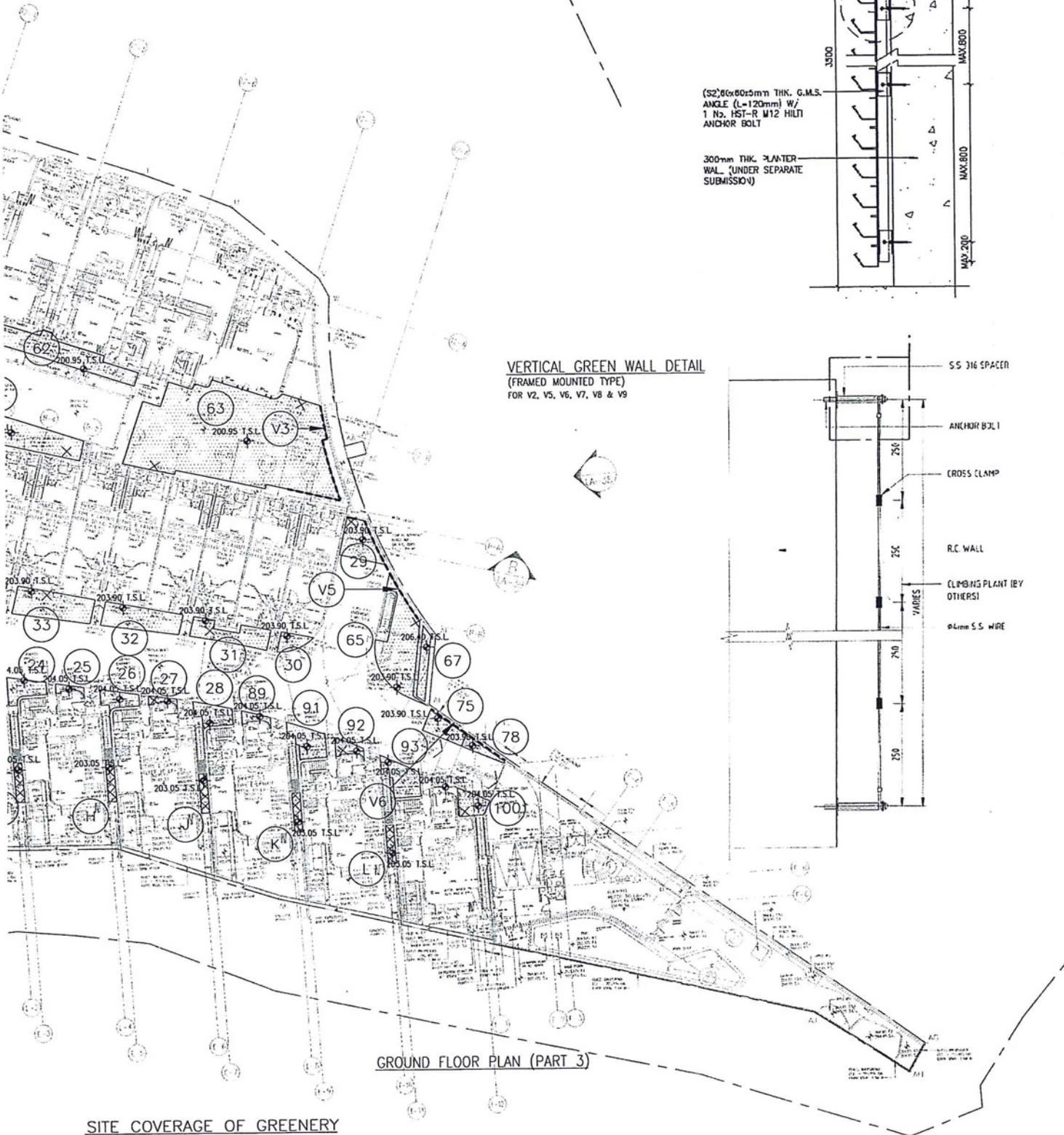
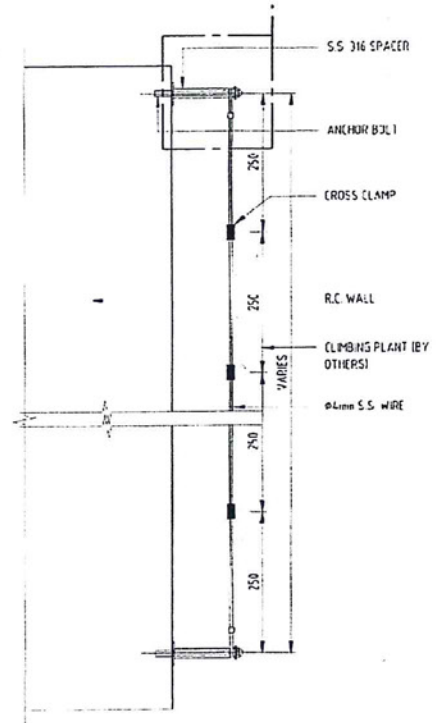
LEGEND:

-  GREENERY AT PEDESTRIAN ZONE
-  GREENERY AT OTHER LOCATION
-  WATER FEATURE
-  VERTICAL GREENING

X IRRIGATION POINT & DRAINAGE POINT

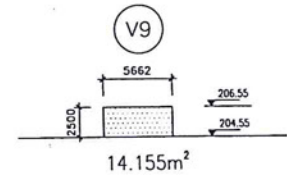
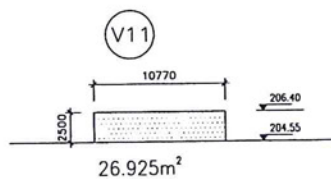
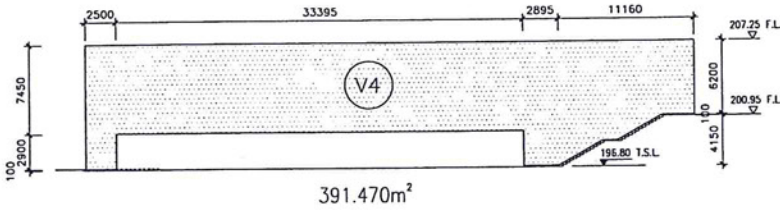
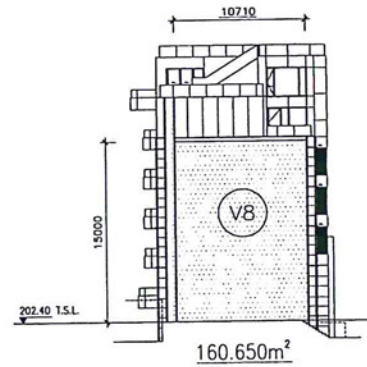
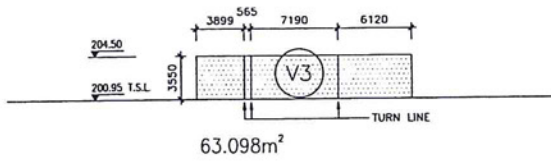
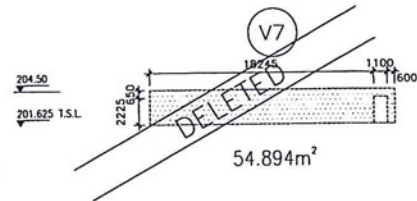
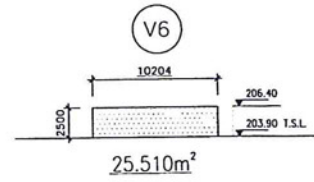
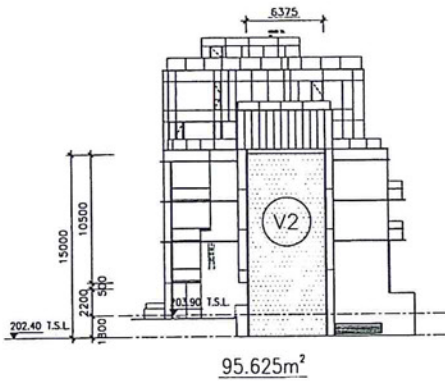
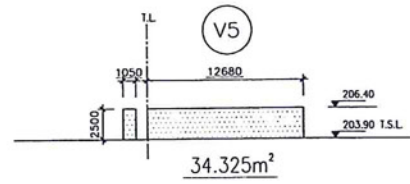
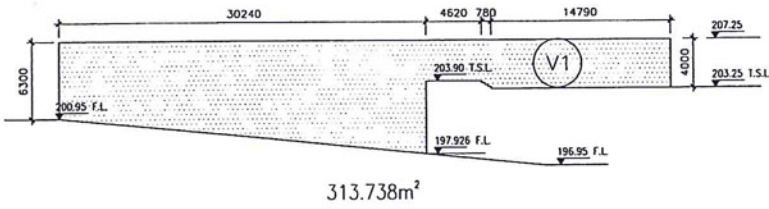


**VERTICAL GREEN WALL DETAIL
(FRAMED MOUNTED TYPE)
FOR V2, V5, V6, V7, V8 & V9**

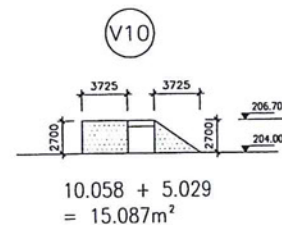


GROUND FLOOR PLAN (PART 3)

**SITE COVERAGE OF GREENERY
(PNAP APP-152 AND SPECIAL CONDITIONS (9) REFERRED)**



VERTICAL GREEN



SITE COVERAGE OF GREENERY
(PNAP APP-152 AND SPECIAL CONDITIONS (9) REFERRED)

CALCULATION FOR SITE COVERAGE OF GREENERY:

GREENERY AREA AT PEDESTRIAN ZONE

| | | | | | | | | | | | |
|----|--|----|---|----|--------------------------|----|---|----|---|----|--------------------------------|
| 1 | $\frac{181801-11350-0.947}{-0.997-0.640-0.084-0.35}$ = 125.821 m ² | 18 | = 5.448 m ² | 32 | = 12.405 m ² | 46 | = 10.806 m ² | 60 | = 3.319 m ² | 74 | = 0.536 m ² |
| 2 | $\frac{121218-12388-(0.840+1)}{-5.970}$ = 102.422 m ² | 19 | = 5.418 m ² | 33 | = 9.091 m ² | 47 | = 28.637 m ² | 61 | = 33.108 m ² | 75 | = 0.536 m ² |
| 3 | $\frac{22399-1.000}{21.399}$ = 1.047 m ² | 20 | = 5.683 m ² | 34 | = 9.354 m ² | 48 | = 6.890 m ² | 62 | = 28.033 m ² | 76 | = 0.536 m ² |
| 4 | = 3.771 m ² | 21 | = 6.242 m ² | 35 | = 7.325 m ² | 49 | $\frac{8.811+1.000}{5.544}$ = 1.589 m ² | 63 | = 2.053 m ² | 77 | = 2.815 m ² |
| 5 | = 7.909 m ² | 22 | $\frac{16.882-0.840-0.084}{25.858}$ = 0.653 m ² | 36 | = 6.756 m ² | 50 | = 2.053 m ² | 64 | = 43.388 m ² | 78 | = 117.886 m ² |
| 6 | = 12.824 m ² | 23 | = 6.772 m ² | 40 | = 11.596 m ² | 37 | = 44.482 m ² | 65 | = 14.708 m ² | 81 | = 11.846 m ² |
| 7 | = 17.423 m ² | 24 | = 8.669 m ² | 41 | = 12.166 m ² | 38 | = 49.212 m ² | 66 | = 9.244 m ² | 82 | = 4.123 m ² |
| 8 | = 10.477 m ² | 25 | = 2.095 m ² | 42 | = 42.070 m ² | 39 | = 28.282 m ² | 67 | = 10.087 m ² | 83 | = 12.489 m ² |
| 9 | = 6.637 m ² | 26 | = 7.190 m ² | 43 | = 3.220 m ² | 40 | = 24.252 m ² | 68 | = 6.881 m ² | 84 | 2.000 m² |
| 10 | = 15.716 m ² | 27 | = 2.018 m ² | 44 | = 4.718 m ² | 41 | = 48.929 m ² | 69 | = 4.180 m ² | 85 | 2.000 m² |
| 11 | $\frac{88.831-0.840-0.084}{86.193}$ = 1.030 m ² | 28 | = 9.287 m ² | 45 | = 3.639 m ² | 42 | = 48.353 m ² | 70 | = 2.981 m ² | 86 | = 5.875 m ² |
| 12 | = 5.909 m ² | 29 | = 15.552 m ² | 46 | = 10.984 m ² | 43 | = 221.186 m ² | 71 | $\frac{104.771-0.812}{108.192}$ = 0.968 m ² | 87 | = 5.875 m ² |
| 13 | = 4.192 m ² | 30 | = 5.953 m ² | 47 | = 7.971 m ² | 44 | = 57.174 m ² | 72 | = 0.536 m ² | 88 | = 1.324 m ² |
| 14 | = 5.712 m ² | 31 | = 17.177 m ² | 48 | = 171.997 m ² | 45 | = 28.074 m ² | 73 | = 0.536 m ² | 89 | = 1.042 m ² |
| 15 | = 7.288 m ² | 32 | = 22.703 m ² | 49 | = 24.858 m ² | 46 | = 21.842 m ² | 74 | = 0.536 m ² | 90 | = 7.882 m ² |
| 16 | = 6.380 m ² | 33 | = 26.746 m ² | 50 | = 103.476 m ² | 47 | = 7.792 m ² | 75 | = 0.536 m ² | 91 | = 7.833 m ² |
| 17 | = 5.766 m ² | 34 | $\frac{20.301-1.850}{27.751}$ = 0.731 m ² | 51 | = 130.331 m ² | 48 | 0.000 m² | 76 | = 0.536 m ² | 92 | |

TOTAL = 2396.528 m²

GREENERY AREA AT OTHER LOCATION

| | |
|---|---|
| A | $\frac{181801-10.988+2}{128.250}$ = 1.418 m ² |
| B | = 33.816 m ² |
| C | $\frac{121218-10.988+2}{120.850}$ = 1.030 m ² |
| D | $\frac{12328-10.988+2}{11.359}$ = 1.092 m ² |
| E | $\frac{20.301-1.850}{27.751}$ = 0.731 m ² |
| F | = 26.011 m ² |
| G | = 4.004 m ² |
| H | = 4.004 m ² |
| I | = 4.004 m ² |
| J | = 4.004 m ² |
| K | = 4.004 m ² |
| L | = 4.004 m ² |
| M | 3.970 m² |
| N | = 10.735 m ² |

TOTAL = 282.324 m²

VERTICAL GREENING / WATER FEATURE / GRASS PAVED AREA

| | |
|-----|--|
| V1 | = 312.738 m ² |
| V2 | = 82.822 m ² |
| V3 | = 63.096 m ² |
| V4 | = 381.470 m ² |
| V5 | = 34.323 m ² |
| V6 | = 25.510 m ² |
| V7 | 84.804 m² |
| V8 | = 160.650 m ² |
| V9 | = 14.155 m ² |
| V10 | = 15.087 m ² |
| V11 | = 26.925 m ² |
| W1 | = 19.635 m ² x 50% = 9.818 m ² |
| W2 | = 11.028 m ² x 50% = 5.515 m ² |
| W3 | = 11.341 m ² x 50% = 5.671 m ² |
| W4 | = 8.101 m ² x 50% = 4.051 m ² |
| W5 | = 3.697 m ² x 50% = 1.849 m ² |
| W6 | 3.162 m² x 50% = 1.581 m² |

TOTAL = 1187.472 m² < 1182 m² (MAX.)

| | |
|---|---|
| REQUIRED GREENERY AREA | = 20% OF SITE AREA |
| | = 19700 x 20% |
| | = 3940 m ² |
| MAX. ALLOWED VERTICAL GREENING / WATER FEATURE AREA | = 30% OF TOTAL REQUIRED GREENERY AREA |
| | = 30% x 3940 |
| | = 1182 m ² |
| TOTAL GREENERY AREA | = 2396.528 + 282.304 = 1187.472 |
| | = 3946.304 m ² |
| S.C. OF GREENERY AREA | = $\frac{2946.304}{19700} \times 100\%$ |
| | = 20.032 % (>20%, i.e. complied) |
| S.C. OF GREENERY AREA AT PEDESTRIAN ZONE | = $\frac{2396.528}{19700} \times 100\%$ |
| | = 12.165 % (>10%, i.e. complied) |