

NO.	REVISION	DATE
1	GEN. REV.	12/23
2	C.M./M.A./M.P.	10/10-15
3	AS APPROVED BY S.D. ON 10-10-15	
4	AS APPROVED BY F.S.D. ON 23-10-15	
5	GEN. REV.	08/15
6	C.M./M.A./M.P.	08/15
7	AS APPROVED BY S.D. ON 08-08-15	
8	AS APPROVED BY F.S.D. ON 10-08-15	
9	GEN. REV.	07/15
10	C.M./M.A./M.P.	07/15
11	AS APPROVED BY S.D. ON 07-07-15	
12	AS APPROVED BY F.S.D. ON 10-07-15	
13	GEN. REV.	04/15
14	C.M./M.A./M.P.	04/15
15	AS APPROVED BY S.D. ON 12-02-15	
16	AS APPROVED BY F.S.D. ON 27-02-15	
17	GEN. REV.	12/14
18	P.L./SIGNED M.A./SIGNED M.P./SIGNED	
19	AS APPROVED BY S.D. ON 23-04-14	
20	AS APPROVED BY F.S.D. ON 23-04-14	
21	GEN. REV.	04/14
22	P.L./SIGNED M.A./SIGNED M.P./SIGNED	
23	AS APPROVED BY S.D. ON 05-02-13	
24	AS APPROVED BY F.S.D. ON 14-02-13	
25	GEN. REV.	09/13
26	P.L./SIGNED M.A./SIGNED M.P./SIGNED	
27	AS APPROVED BY S.D. ON 20-03-2013	
28	GEN. REV.	09/13
29	P.L./SIGNED M.A./SIGNED M.P./SIGNED	
30	AS APPROVED BY S.D. ON 15-12-2012	
31	AS APPROVED BY F.S.D. ON 09-02-2013	
32	GEN. REV.	11/12
33	P.L./SIGNED M.A./SIGNED M.P./SIGNED	
34	AS APPROVED BY S.D. ON 08/09/2012	
35	AS APPROVED BY F.S.D. ON 03-09-2012	
36	GEN. REV.	09/12
37	P.L./SIGNED M.A./SIGNED M.P./SIGNED	
38	AS APPROVED BY F.S.D. ON 20-08-2012	

**FOR B. D. SUBMISSION**  
Scenario 2: The works shown on these plans are Type II works.  
General building works.  
(Underwritten)

**CHENG HING**  
MCA AUTHORIZED PERSON

ISSUED DATE: 11 DEC 2015

PROJECT: PROPOSED COMMERCIAL & HOTEL DEVELOPMENT ON TSWL NO. 26 AREA 108A, TIN SHUI WAI YUEN LONG, N.T.

LEGENDS UNDER LEASE

- GREEN AREA
- PLANTER (GREENERY AREA)
- HOTEL BACK OF HOUSE AREA UNDER BYE-LAW 23A
- E.V.A.
- SHOPPING ARCADE

NOTES:  
SHOP NO. G004, G013, G014 OMITTED

OPENABLE WINDOW AREA CALCULATION: (G/F)  
SHOPS + SHOPPING ARCADE (FOR F.S.D.)

SHOP NO.	REQUIREMENT	PROVIDED
1	10,802 x 1,340 H x 80 %	11,265 sq.m.
2	3,000 x 2,400 H x 80 %	3,540 sq.m.
3	1,302 x 2,100 H x 80 %	5,532 sq.m.
4	1,100 x 2,500 H x 80 %	2,200 sq.m.
5	1,440 x 1,340 H x 80 %	7,978 sq.m.
TOTAL		31,315 sq.m.

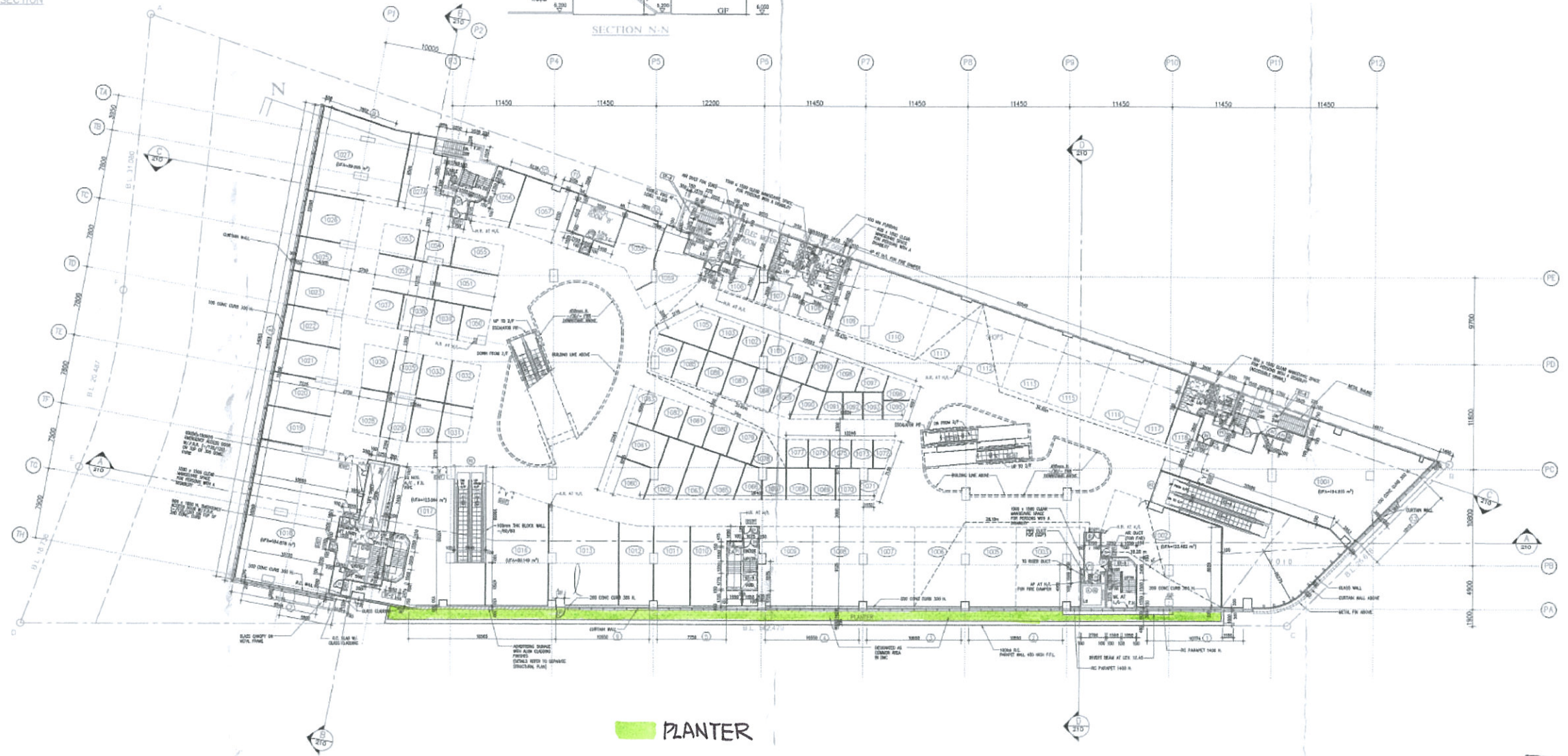
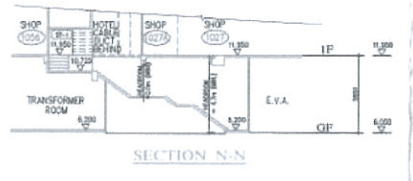
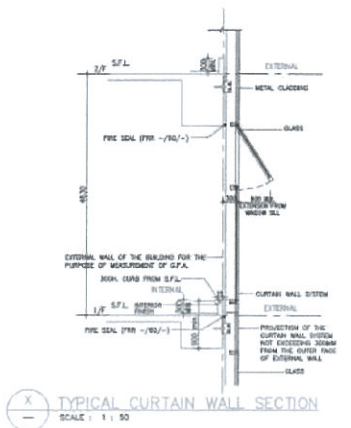
OPENABLE WINDOW AREA CALCULATION: (G/F)  
LOADING & UNLOADING AND DRIVEWAY (FOR F.S.D.)

REQUIREMENT	PROVIDED
2,999.03 x 6.25 %	206,222 sq.m.
1,400 x 4,750 H	25,100 sq.m.
38,248 x 4,750 H	181,878 sq.m.
TOTAL	216,820 sq.m.

Plan Approved

CHENG HING on Behalf of  
Senior Building Surveyor  
for BUILDING AUTHORITY

7 JAN 2016



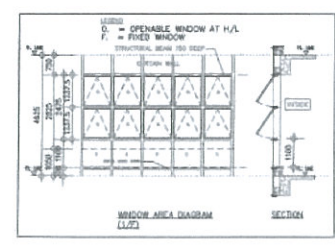
### 1/F PLAN

AUTOMATIC SPRINKLER SYSTEM TO BE PROVIDED AT THIS FLOOR  
SUPERIMPOSED LOAD  
SHOPS = 5.0 kpa  
E & M'S = 7.5 kpa  
MECHANICAL VENTILATION TO BE PROVIDED IN ACCORDANCE WITH ANNEX 1 OF PAMP ADN-2  
& ARTIFICIAL LIGHTING TO BE PROVIDED  
(D) ACCESSIBLE UNSEAT TOILET FOR PERSONS WITH A DISABILITY  
AL = ACCESSIBLE LIFT FOR PERSONS WITH A DISABILITY  
ALL AREA CALCULATION REFER TO DRAWING NO.211(G)

**PLANTER**

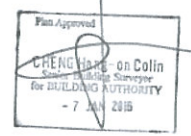
- PLANTER (GREENERY AREA)
- SHOPPING ARCADE

NOTES:  
SHOP NO. 1004, 1014, 1015, 1024, 1034, 1040 - 1049, 1064, 1074, 1094, 1104 & 1114 OMITTED



### OPENABLE WINDOW AREA CALCULATION (1/F) SHOPS + SHOPPING ARCADE (FOR FSD)

NO.	DESCRIPTION	AREA (sq.m.)
REQUIRED	4.070195 x 6.25 %	= 254.207 sq.m.
PROVIDED:		
1	10.774 x 2.025 H. x 80 %	= 17.424 sq.m.
2	10.850 x 2.025 H. x 80 %	= 17.021 sq.m.
3	10.800 x 2.025 H. x 80 %	= 17.172 sq.m.
4	10.550 x 2.025 H. x 80 %	= 17.091 sq.m.
5	7.750 x 2.025 H. x 80 %	= 12.555 sq.m.
6	10.950 x 2.025 H. x 80 %	= 17.091 sq.m.
7	8.544 x 2.475 H. x 80 %	= 15.860 sq.m.
8	10.273 x 2.475 H. x 80 %	= 16.274 sq.m.
9	7.852 x 2.475 H. x 80 %	= 14.576 sq.m.
10	8.238 x 2.475 H. x 80 %	= 9.722 sq.m.
11	2.100 x 2.475 H. x 80 %	= 3.890 sq.m.
12	2.800 x 2.475 H. x 80 %	= 7.654 sq.m.
13	10.112 x 2.025 H. x 80 %	= 16.381 sq.m.
	<b>TOTAL</b>	<b>= 258.883 sq.m.</b>



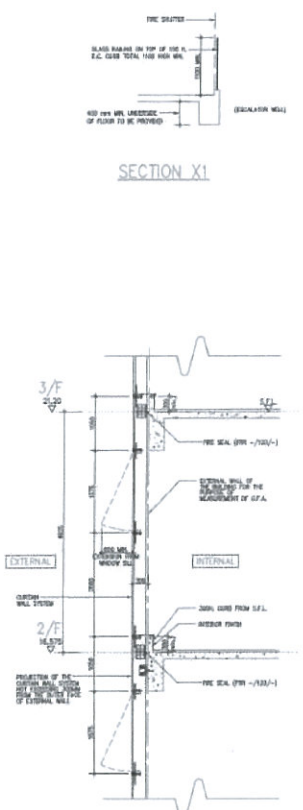
FOR B. D. SUBMISSION  
Showing B. The whole Store on Store plan at Type II works

General building works  
(Approved by Building Authority)

ISSUED DATE: 18 DEC 2015  
PROJECT: PROPOSED COMMERCIAL & HOTEL DEVELOPMENT ON TSWL NO. 26 AREA 108A, TIN SHUI WAI YUEN LONG, N.T.

DRWN BY	CHK BY
1201	
204	





Y TYPICAL SECTION OF CURTAIN WALL (FOR PODIUM)  
SCALE: 1:50

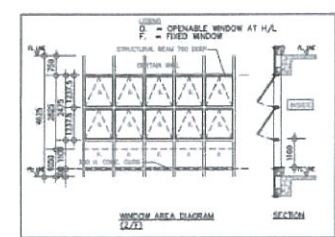
## 2/F PLAN

AUTOMATIC SPRINKLER SYSTEM TO BE PROVIDED AT THIS FLOOR SUPERIMPOSED LOAD  
SHOPS = 5.0 kpa  
C. & M'S = 7.5 kpa  
MECHANICAL VENTILATOR TO BE PROVIDED IN ACCORDANCE WITH ANNEX 1 OF PDM 404-2  
B. ARTIFICIAL LIGHTING TO BE PROVIDED  
(D) ACCESSIBLE UNisex TOILET FOR PERSONS WITH A DISABILITY  
AL = ACCESSIBLE LIFT FOR PERSONS WITH A DISABILITY  
ALL LFA CALCULATION REFER TO DRAWING NO.2119

**PLANTER**

- PLANTER (GREENERY AREA)
- SHOPPING ARCADE

NOTES:  
(Shop no. 2004, 2014, 2021~2027, 2027A, 2032~2037, 2038 2040~2049, 2050~2055, 2064, 2074, 2094, 2014, 2113 & 2114, 2119, omitted)



### OPENABLE WINDOW AREA CALCULATION (2/F) SHOPS + SHOPPING ARCADE (FOR FSD)

REQUIRED: 2444.905 x 0.25 % = 240.057 sqm

PROVIDED:

① 18.380/78 x 14(OOPENABLE) x 2.475 H. x 80 % = 31.861 sqm
② 11.432/9 x 8(OOPENABLE) x 1.237 H. x 80 % = 10.110 sqm
③ 1.000 x 0.000 H. x 0.0 % = 0.000 sqm
④ (18.208 x 2.475 H. x 80 % = 17.289 sqm
⑤ 54.538 x 2.475 H. x 80 % = 107.885 sqm
⑥ 7.852 x 2.275 H. x 80 % = 14.292 sqm
⑦ 5.228 x 2.175 H. x 80 % = 9.116 sqm
⑧ 11.650 x 2.175 H. x 80 % = 20.184 sqm
⑨ 10.112 x 2.025 H. x 80 % = 16.341 sqm
<b>= 240.057 sqm</b>

NO.	REVISION	DATE
1	GEN. REV. MA/ WP/	08/10
	AS APPROVED BY S.O. ON 04-09-15	
	AS APPROVED BY F.S.S. ON 16-09-15	
2	GEN. REV. MA/ WP/	07/10
	AS APPROVED BY S.O. ON 01-08-15	
	AS APPROVED BY F.S.S. ON 16-08-15	
3	GEN. REV. MA/ WP/	04/10
	AS APPROVED BY S.O. ON 12-02-15	
	AS APPROVED BY F.S.S. ON 17-01-15	
4	GEN. REV. MA/ WP/	12/14
	PL./SIGNED MA/SIGNED WP/SIGNED	
	AS APPROVED BY SO ON 22-10-14	
	AS APPROVED BY F.S.S. ON 27-01-15	
5	GEN. REV. MA/ WP/	08/14
	PL./SIGNED MA/SIGNED WP/SIGNED	
	AS APPROVED BY SO ON 20-04-14	
	AS APPROVED BY FSD ON 20-05-2014	
6	GEN. REV. MA/ WP/	04/14
	PL./SIGNED MA/SIGNED WP/SIGNED	
	AS APPROVED BY SO ON 05-13-13	
	AS APPROVED BY FSD ON 14-11-2013	
7	GEN. REV. MA/ WP/	08/13
	PL./SIGNED MA/SIGNED WP/SIGNED	
	AS APPROVED BY SO ON 28-06-2013	
	AS APPROVED BY FSD ON 03-09-2013	
8	GEN. REV. MA/ WP/	08/13
	PL./SIGNED MA/SIGNED WP/SIGNED	
	AS APPROVED BY SO ON 19-12-2012	
	AS APPROVED BY FSD ON 03-03-2013	
9	GEN. REV. MA/ WP/	11/12
	PL./SIGNED MA/SIGNED WP/SIGNED	
	AS APPROVED BY SO ON 02/04/2012	
	AS APPROVED BY FSD ON 08/10/2012	
10	GEN. REV. MA/ WP/	08/12
	PL./SIGNED MA/SIGNED WP/SIGNED	
	AS APPROVED BY F.S.S. ON 26-08-2012	



FOR B. D. SUBMISSION  
Summit II - The works shown on these plans are Type II works

General Building Works  
(Amendment)  
In respect of which the Building Authority's consent is applied for.

ISSUED DATE: 27 SEP 2015

PROJECT: PROPOSED COMMERCIAL & HOTEL DEVELOPMENT ON TSWL NO. 26 AREA 108A, TIN SHUI WAI YUEN LONG, N.T.

TITLE: 2/F PLAN

DRAWN BY: PL./SIGNED	NO. 1201
CHECKED BY: MA/ WP/	NO. 205
APPROVED BY: F.S.S./SIGNED	NO. 1000
SCALE: 1:50	REGION: ( )



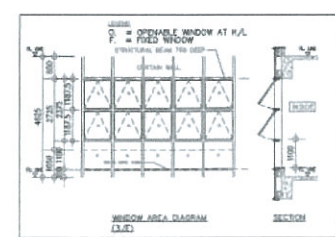


### 3/F PLAN

AUTOMATIC SPRINKLER SYSTEM TO BE PROVIDED AT THIS FLOOR SUPERIMPOSED LOAD  
FLAT ROOF = 5.0 kpa  
E & M'S = 7.5 kpa  
MECHANICAL VENTILATION TO BE PROVIDED IN ACCORDANCE WITH ANNEX 1 OF AOM-1  
& APPOINTED LIGHTING TO BE PROVIDED  
(3) ACCESSIBLE URINE TOILET FOR PERSONS WITH A DISABILITY  
AL = ACCESSIBLE LIFT FOR PERSONS WITH A DISABILITY  
ALL UPA CALCULATION REFER TO DRAWING NO. 211(A)



NOTES:  
SHOP NO. 3004, 3014, 3024, 3034, 3040 - 3049, 3064, 3074, 3084, 3089 OMITTED



#### OPENABLE WINDOW AREA CALCULATION (3/F) SHOPS + SHOPPING ARCADE + RESTAURANT+KITCHEN (FOR FSD)

NO.	SIZE (W x H)	AREA (sq.m)
PROVIDED		
1	0.500 x 2.375 H x 80 W	10.156 sq.m
2	27.490 x 2.375 H x 80 W	52.346 sq.m
3	19.874 x 2.375 H x 80 W	47.281 sq.m
4	6.756 x 2.375 H x 80 W	12.828 sq.m
5	1.700 x 2.375 H x 80 W	3.226 sq.m
6	51.363 x 2.375 H x 80 W	97.989 sq.m
7	6.739 x 2.375 H x 80 W	12.804 sq.m
8	11.600 x 2.375 H x 80 W	22.549 sq.m
<b>TOTAL</b>		<b>216.793 sq.m</b>

- 1. GEN. REV. 12/05
- C.W./ M.H./ W.P./
- AS APPROVED BY S.A. ON 18-10-13
- AS APPROVED BY F.S.D. ON 25-10-13
- 2. GEN. REV. 07/15
- C.W./ M.H./ W.P./
- AS APPROVED BY S.A. ON 04-09-15
- AS APPROVED BY F.S.D. ON 18-09-15
- 3. GEN. REV. 07/15
- C.W./ M.H./ W.P./
- AS APPROVED BY S.A. ON 01-09-15
- AS APPROVED BY F.S.D. ON 16-09-15
- 4. GEN. REV. 04/15
- C.W./ M.H./ W.P./
- AS APPROVED BY S.A. ON 12-12-15
- AS APPROVED BY F.S.D. ON 27-03-15
- 5. GEN. REV. 12/14
- P.L./SIGNED M.H./SIGNED W.P./SIGNED
- AS APPROVED BY S.A. ON 23-09-14
- AS APPROVED BY F.S.D. ON 27-09-14
- 6. GEN. REV. 06/14
- P.L./SIGNED M.H./SIGNED W.P./SIGNED
- AS APPROVED BY S.A. ON 20-04-14
- AS APPROVED BY F.S.D. ON 14/11/13
- 7. GEN. REV. 04/14
- P.L./SIGNED M.H./SIGNED W.P./SIGNED
- AS APPROVED BY S.A. ON 05-10-13
- AS APPROVED BY F.S.D. ON 14/11/13
- 8. GEN. REV. 09/13
- P.L./SIGNED M.H./SIGNED W.P./SIGNED
- AS APPROVED BY S.A. ON 28-08-2013
- AS APPROVED BY F.S.D.
- 9. REV. GREENERY AREA 05/13
- P.L./SIGNED M.H./SIGNED W.P./SIGNED
- AS APPROVED BY F.S.D. ON 25-03-2013
- 10. GEN. REV. SWIMMING POOL DELETED 05/13
- P.L./SIGNED M.H./SIGNED W.P./SIGNED
- AS APPROVED BY S.A. ON 10-11-2012
- AS APPROVED BY F.S.D. ON 09-01-2013
- 11. GEN. REV. SWIMMING POOL DELETED 11/12
- P.L./SIGNED M.H./SIGNED W.P./SIGNED
- AS APPROVED BY S.A. ON 04/15/2012
- AS APPROVED BY F.S.D. ON 04/15/2012
- 12. GEN. REV. 03/12
- P.L./SIGNED M.H./SIGNED W.P./SIGNED
- AS APPROVED BY S.A. ON 28-06-2012

#### FOR B. D. SUBMISSION

General building works  
In respect of which the Building Authority's consent is applied for.

Plan Approved  
- 7 JAN 2016

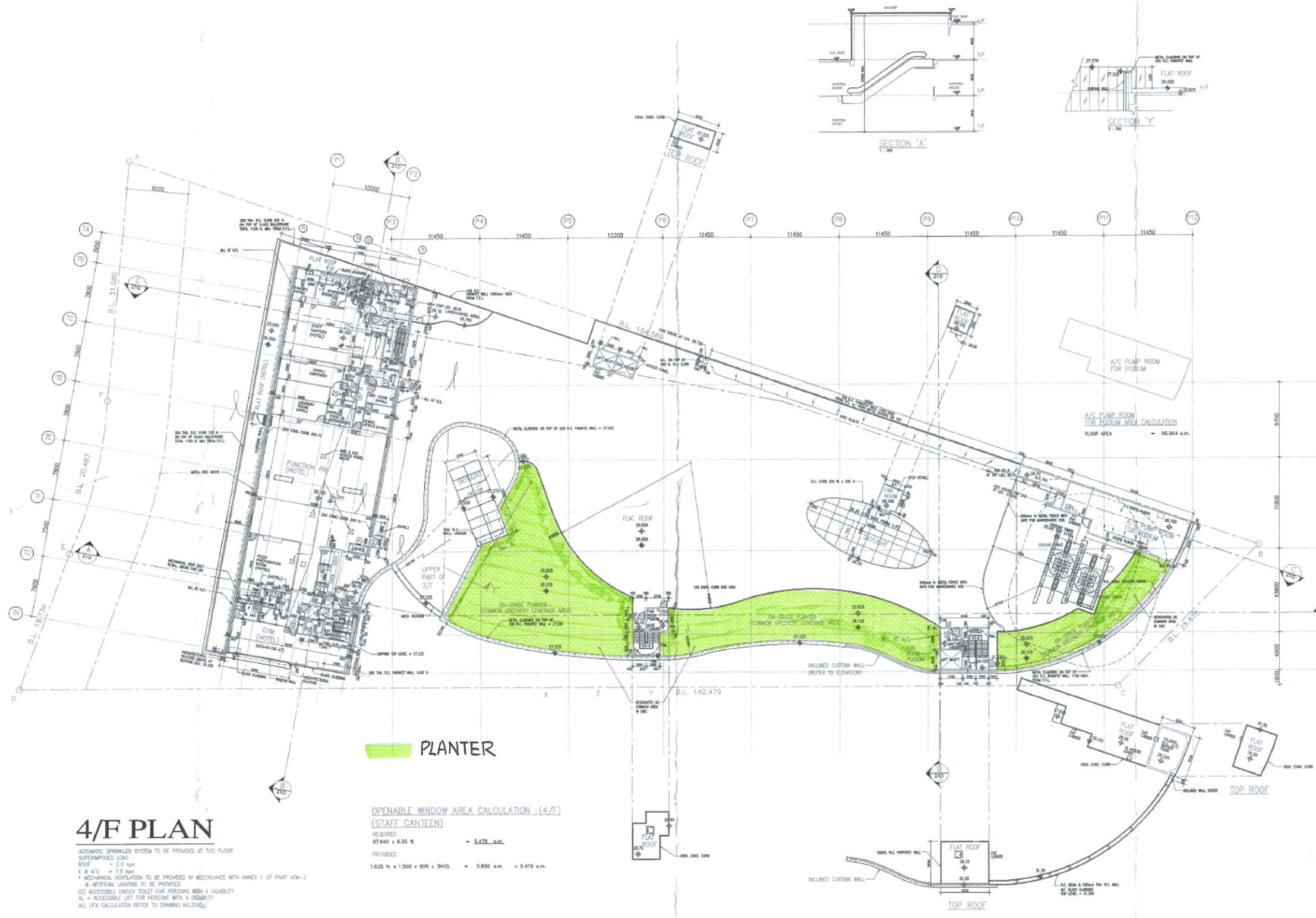
ISSUED DATE: 18 DEC 2015

PROJECT:  
PROPOSED COMMERCIAL & HOTEL DEVELOPMENT ON TSWL NO. 26 AREA 108A, TIN SHUI WAI YUEN LONG, N.T.

#### TITLE:

DESIGNED BY:	W.H./SIGNED	JOB NO.:	1201
CHECKED BY:	M.H./SIGNED	DRAWING NO.:	206
APPROVED BY:	F.S.D./SIGNED	SCALE:	1:200
DATE:	14/03/16	REVISION:	( )



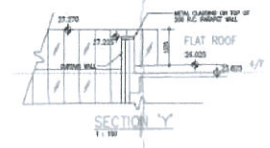
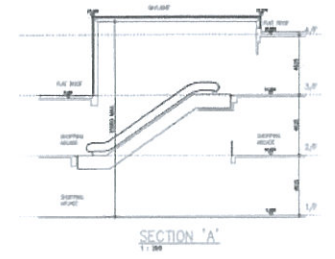


### 4/F PLAN

AUTOMATIC SPRINKLER SYSTEM TO BE PROVIDED AT THIS FLOOR  
SUPERIMPOSED LOAD  
ROOF = 2.0 kpa  
F. & M'S = 7.5 kpa  
MECHANICAL VENTILATION TO BE PROVIDED IN ACCORDANCE WITH ASHRAE 1 OF PART 42M-2  
ARTIFICIAL LIGHTING TO BE PROVIDED  
(D) ACCESSIBLE UNSEY TOILET FOR PERSONS WITH A DISABILITY  
AL = ACCESSIBLE LIFT FOR PERSONS WITH A DISABILITY  
ALL LFA CALCULATION REFER TO DRAWING NO.2116(A)

**OPENABLE WINDOW AREA CALCULATION : (4/F)  
(STAFF CANTEEN)**  
REQUIRED  
87.642 x 6.25 % = 5.478 s.m.  
PROVIDED  
1.625 H x 1.300 x 200 x 3005 = 5.850 s.m. > 5.478 s.m.

- PLANTER (GREENERY AREA)
- SHOPPING ARCADE



NO.	REVISION	DATE
1	GEN. REV.	12/10
2	C.K./ M.A./ W.P./	
3	AS APPROVED BY B.S. ON 16-10-15	
4	AS APPROVED BY F.S.D. ON 28-10-15	
5	GEN. REV.	09/15
6	C.K./ M.A./ W.P./	
7	AS APPROVED BY B.S. ON 04-09-15	
8	AS APPROVED BY F.S.D. ON 16-09-15	
9	GEN. REV.	07/15
10	C.K./ M.A./ W.P./	
11	AS APPROVED BY B.S. ON 01-08-15	
12	AS APPROVED BY F.S.D. ON 16-08-15	
13	GEN. REV.	04/15
14	C.K./ M.A./ W.P./	
15	AS APPROVED BY B.S. ON 12-02-15	
16	AS APPROVED BY F.S.D. ON 27-02-15	
17	GEN. REV.	12/14
18	P.L./SIGNED M.A./SIGNED W.P./SIGNED	
19	AS APPROVED BY B.S. ON 23-09-14	
20	AS APPROVED BY F.S.D. ON 27-09-14	
21	GEN. REV.	06/14
22	P.L./SIGNED M.A./SIGNED W.P./SIGNED	
23	AS APPROVED BY B.S. ON 20-04-14	
24	AS APPROVED BY F.S.D. ON 23-05-14	
25	GEN. REV.	04/14
26	P.L./SIGNED M.A./SIGNED W.P./SIGNED	
27	AS APPROVED BY B.S. ON 16-11-13	
28	AS APPROVED BY F.S.D. ON 14-11-13	
29	GEN. REV.	09/13
30	P.L./SIGNED M.A./SIGNED W.P./SIGNED	
31	AS APPROVED BY B.S. ON 28-06-13	
32	AS APPROVED BY F.S.D. ON 09-07-13	
33	GEN. REV. SWIMMING POOL DELETED 05/13	
34	P.L./SIGNED M.A./SIGNED W.P./SIGNED	
35	AS APPROVED BY F.S.D. ON 23-03-2013	

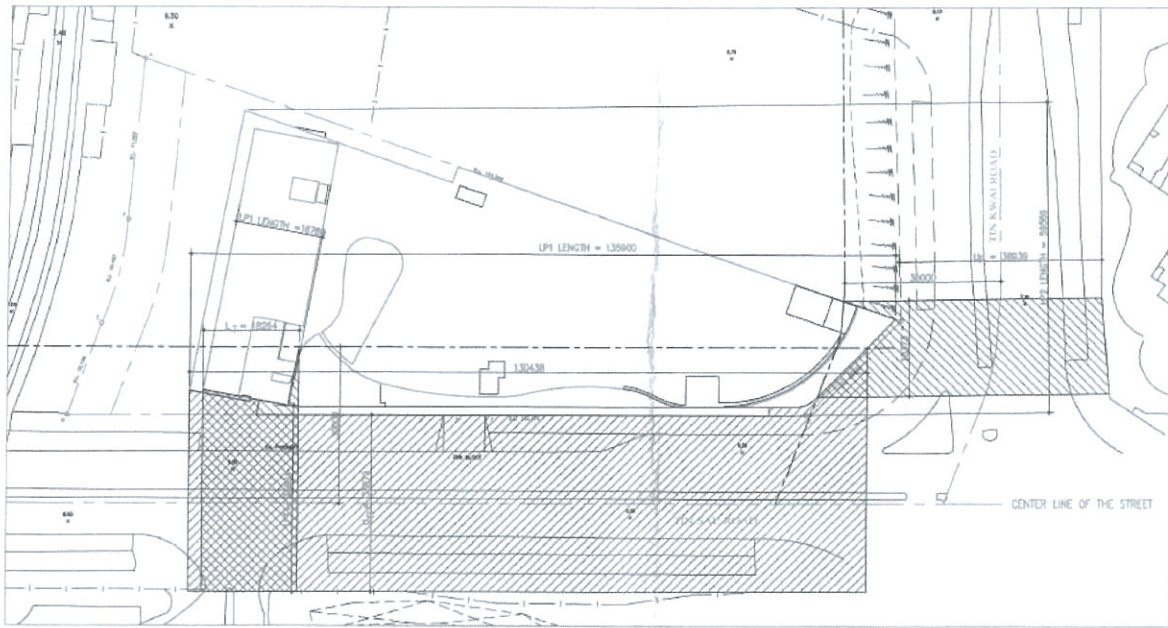
**FOR B. D. SUBMISSION**  
Drawing No. 2116 (A) works shown on these plans are Type II works.  
General building works  
(Remarks: -)  
In respect of which the Building Authority's consent is applied for.

ISSUED DATE : 16 DEC 2015  
PROJECT : PROPOSED COMMERCIAL & HOTEL DEVELOPMENT ON TSWL NO. 26 AREA 108A, TIN SHUI WAI YUEN LONG, N.T.

Plan Approved  
**CHENG Hoi on Colla**  
Senior Director of Surveyor AUTHORITY  
- 7 JAN 2016

Note: This plan has been prepared on a standard grid lines under the vertical projection system as stipulated in P&M 42M-13. The duties of the authorized person, registered structural engineer and/or registered mechanical engineer concerned as specified under subrule 4(7)(b) and the provision of section 14(2)(a) of the Building Ordinance are of particular relevance in this regard.

TITLE	
4/F PLAN	
DESIGN BY	FOR NO.
DESIGNED BY	1201
APPROVED BY	DRAWING NO.
SCALE	206A
SHEET	REVISION



STREET CANYON DIAGRAM

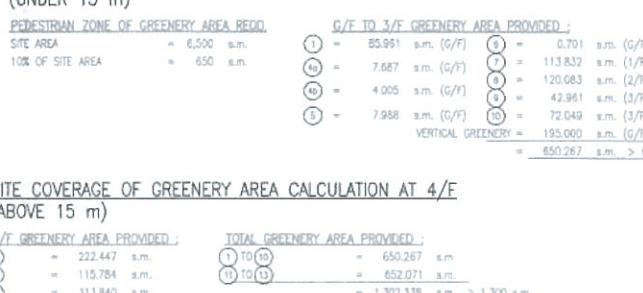
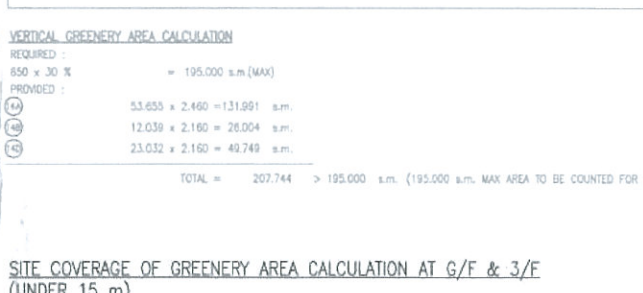
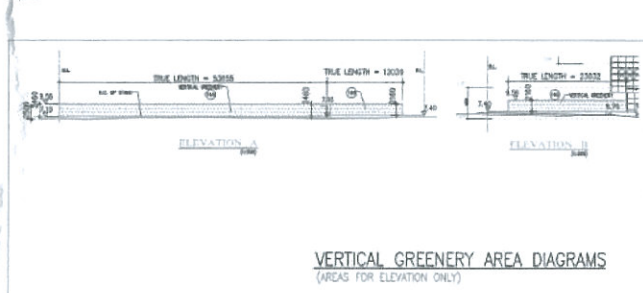
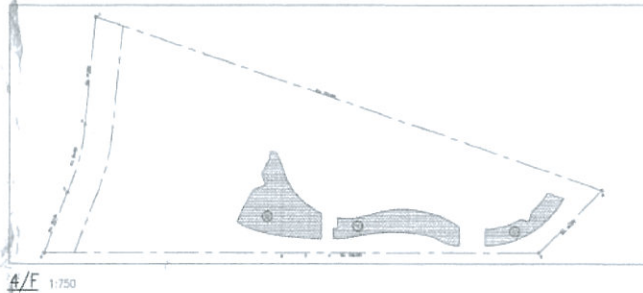
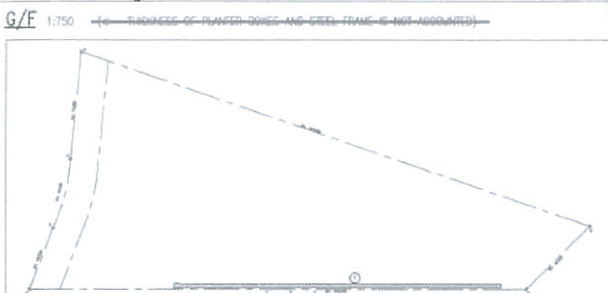
1:500  
DESIGN REQUIREMENT (1)

MAXIMUM (Lp) = 5 x U  
**BUILDING AT LOW ZONE (TIN SAU ROAD)**  
 MEAN U<sub>z</sub> = AREA / LENGTH  
 U<sub>z1</sub> = 4,562.846 / 130,438 = 34.981 m  
 U<sub>z1</sub> = 34.981 m, MAX (Lp)<sub>z</sub> = U<sub>z1</sub> x 5 = 174.905 m  
 (Lp)<sub>z</sub> OF PROPOSED PODIUM = 135,900 m (< 174,905 m, i.e. O.K.)

**BUILDING AT MIDDLE ZONE (TIN SAU ROAD)**  
 MEAN U<sub>z</sub> = AREA / LENGTH  
 U<sub>z</sub> = 688.366 / 18,264 = 37.690  
 U<sub>z</sub> = 37.690 m, MAX (Lp)<sub>z</sub> = U<sub>z</sub> x 5 = 188.450 m  
 (Lp)<sub>z</sub> OF PROPOSED TOWER = 16,760 m (< 188,450 m, i.e. O.K.)

**BUILDING AT LOW ZONE (TIN KWAN ROAD)**  
 MEAN U<sub>z</sub> = AREA / LENGTH  
 U<sub>z2</sub> = 670.835 / 18,373 = 47.398 m  
 U<sub>z2</sub> = 47.398 m  
 AS U<sub>z1</sub> < U<sub>z2</sub>, U<sub>z1</sub> IS THE LEAST U

SITE COVERAGE OF GREENERY AREA CALCULATION



**VERTICAL GREENERY AREA CALCULATION**  
 REQUIRED: 850 x 30 % = 195,000 s.m. (MAX)  
 PROVIDED:  
 (1) 53,633 x 2,460 = 131,991 s.m.  
 (2) 12,039 x 2,160 = 26,004 s.m.  
 (3) 23,032 x 2,160 = 49,749 s.m.  
 TOTAL = 207,744 > 195,000 s.m. (195,000 s.m. MAX AREA TO BE COUNTED FOR TOTAL GREENERY AREA)

**SITE COVERAGE OF GREENERY AREA CALCULATION AT G/F & 3/F (UNDER 15 m)**  
**PEDESTRIAN ZONE OF GREENERY AREA REQD.**  
 SITE AREA = 6,500 s.m.  
 10% OF SITE AREA = 650 s.m.

**G/F TO 3/F GREENERY AREA PROVIDED:**

(1)	85,991 s.m. (G/F)	(6)	6,701 s.m. (G/F)
(2)	7,687 s.m. (G/F)	(7)	113,832 s.m. (1/F)
(3)	4,005 s.m. (G/F)	(8)	120,083 s.m. (2/F)
(4)	7,988 s.m. (G/F)	(9)	42,961 s.m. (3/F)
(5)	7,988 s.m. (G/F)	(10)	72,049 s.m. (3/F)
VERTICAL GREENERY = 195,000 s.m. (G/F)		= 650,267 s.m. > 650 s.m.	

**SITE COVERAGE OF GREENERY AREA CALCULATION AT 4/F (ABOVE 15 m)**

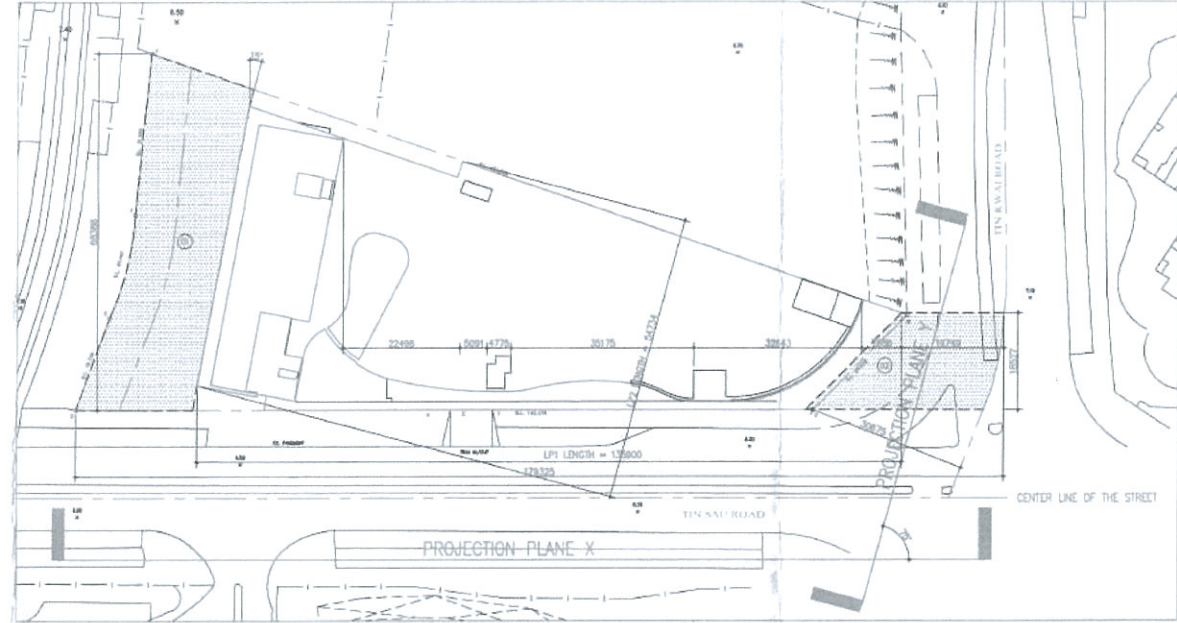
**4/F GREENERY AREA PROVIDED:**

(11)	222,447 s.m.	(16)	650,267 s.m.
(12)	115,784 s.m.	(17)	652,071 s.m.
(13)	313,840 s.m.	(18)	1,302,338 s.m. > 1,300 s.m.

**TOTAL GREENERY AREA PROVIDED:**

(1)	85,991 s.m.	(11)	222,447 s.m.
(2)	7,687 s.m.	(12)	115,784 s.m.
(3)	4,005 s.m.	(13)	313,840 s.m.
(4)	7,988 s.m.	(14)	222,447 s.m.
(5)	7,988 s.m.	(15)	115,784 s.m.
(6)	6,701 s.m.	(16)	650,267 s.m.
(7)	113,832 s.m.	(17)	652,071 s.m.
(8)	120,083 s.m.	(18)	1,302,338 s.m.
(9)	42,961 s.m.	(19)	222,447 s.m.
(10)	72,049 s.m.	(20)	115,784 s.m.
VERTICAL GREENERY = 195,000 s.m. (G/F)		= 650,267 s.m. > 650 s.m.	

BUILDING PERMEABILITY CALCULATION

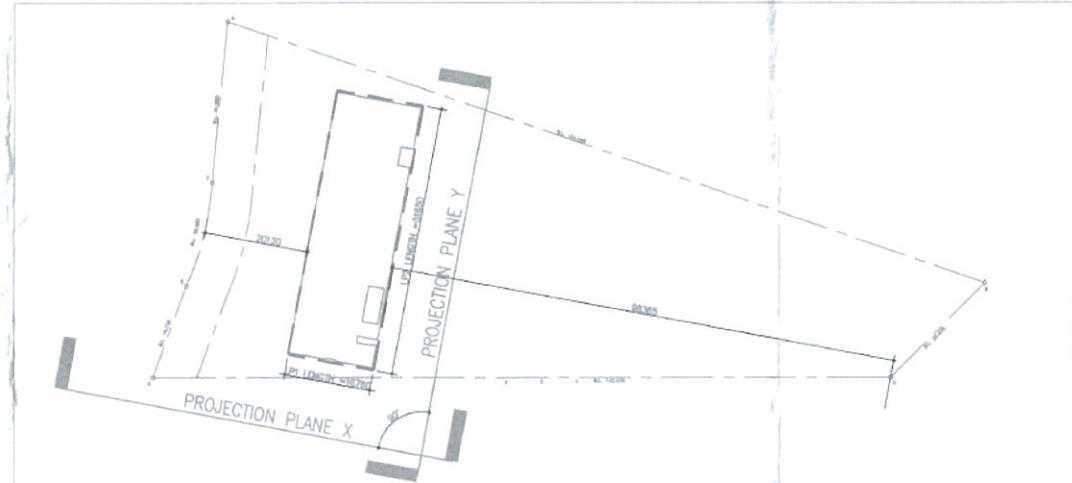


BUILDING PERMEABILITY DIAGRAM (0-20m)

1:500  
PERMEABILITY OF BUILDING

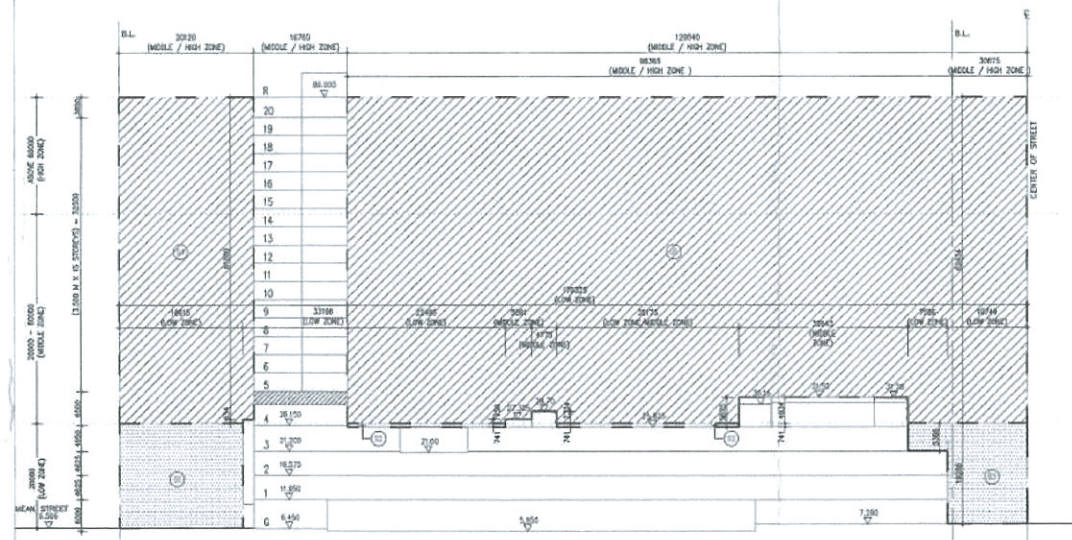
NOTIONAL AIR CORRIDOR = 1,272.993 s.m.  
 1,272.993 / 68,366 = 18.615 m > 7.500 m  
 AS LP2 = 54.734 m < 60.0 m, PROJECTION FACADE DIAGRAM IS NOT REQUIRED.

NOTIONAL AIR CORRIDOR = 511.812 s.m.  
 511.812 / 18,527 = 27.625 m > 7.500 m



BUILDING PERMEABILITY DIAGRAM (20-60m) AS LP2 < 60m, PROJECTION FACADE DIAGRAM IS NOT REQUIRED

1:500



PROJECTION FACADE THROUGH PROJECTION PLANE X (FOR BOTH 0-20m ZONE & 20m-60m ZONE)

DESIGN REQUIREMENT (2) LOW ZONE

INTERVENING SPACE & SEPARATING DISTANCE  
 (Lp)<sub>z</sub> = 135,900 m (< 175,985 m, i.e. O.K.)

TOTAL FACADE AREA OF THE INTERVENING SPACES  
 = (18,615 x 20,000) + [(22,798 + 35,175) x 0.741]  
 + (7,585 x 3,366) + (19,749 x 19,286) = 836,619 s.m.  
 (P) ACHIEVED BY THE INTERVENING SPACES  
 = 836,619 / (20 x 179,325) x 100 %  
 = 23.527 % > 20% (i.e. O.K.)

DESIGN REQUIREMENT (2) MIDDLE ZONE / HIGH ZONE

INTERVENING SPACE & SEPARATING DISTANCE  
 (Lp)<sub>z</sub> = 16,760 m (< 188,420 m, i.e. O.K.)

TOTAL FACADE AREA OF THE INTERVENING SPACES  
 = (18,615 x 0.634) + (20,120 x 0.800) + (129,640 x 62.434) - (5,091 x 0.759)  
 - (4,775 x 2.334) - (32,643 x 4.934) = 8,135,631 s.m.  
 OVERALL (P) ACHIEVED  
 = 8,135,631 / (165,920 x 60,779) x 100 %  
 = 90.581 % > 20% (i.e. O.K.)

B. D. REFERENCE:  
 2 / 9053 / 12  
 F. S. REFERENCE:  
 8 / 29953

- GEN. REV. 08/05
- C.W./SIGNED M.H./SIGNED W.P./SIGNED
- AS APPROVED BY B.O. ON 04-09-15
- AS APPROVED BY F.S.D. ON 16-06-15
- GEN. REV. 07/15
- C.W./SIGNED M.H./SIGNED W.P./SIGNED
- AS APPROVED BY B.O. ON 01-06-15
- AS APPROVED BY F.S.D. ON 16-06-15
- GEN. REV. 12/14
- C.W./SIGNED M.H./SIGNED W.P./SIGNED
- AS APPROVED BY B.O. ON 22-09-14
- AS APPROVED BY F.S.D. ON 27-01-15
- GEN. REV. 08/14
- C.W./SIGNED M.H./SIGNED W.P./SIGNED
- AS APPROVED BY B.O. ON 30-04-14
- AS APPROVED BY F.S.D. ON 29-05-14
- GEN. REV. 04/14
- C.W./SIGNED M.H./SIGNED W.P./SIGNED
- AS APPROVED BY B.O. ON 05-12-13
- AS APPROVED BY F.S.D. ON 14-11-13
- GEN. REV. 09/13
- C.W./SIGNED M.H./SIGNED W.P./SIGNED
- AS APPROVED BY B.O. ON 28-05-2013
- AS APPROVED BY F.S.D. ON 08-07-2013
- GEN. REV. 05/13
- P.L./SIGNED M.H./SIGNED W.P./SIGNED
- AS APPROVED BY F.S.D. ON 08-01-2013
- GEN. REV. 01/13
- P.L./SIGNED M.H./SIGNED W.P./SIGNED
- AS APPROVED BY B.O. ON 19-12-2012
- AS APPROVED BY F.S.D. ON 09-01-2013
- GEN. REV. 11/12
- P.L./SIGNED M.H./SIGNED W.P./SIGNED
- AS APPROVED BY B.O. ON 08-10-2012
- AS APPROVED BY F.S.D. ON 08-10-2012
- GEN. REV. 08/12
- P.L./SIGNED M.H./SIGNED T.C./SIGNED
- AS APPROVED BY F.S.D. ON 26-06-2012

NO. REVISION DATE

FOR B. D. SUBMISSION

Statement II: The works shown on these plans are Type II works.

General Building Works

(Amendment)

In respect of which the Building Authority's consent is applied for.

ISSUED DATE: 17 SEP 2015

PROJECT: PROPOSED COMMERCIAL & HOTEL DEVELOPMENT ON TSWH PL. NO. 25, AREA 102A, TIN SHUI WAI YUEN LONG, N.T.

MLA ARCHITECTS (HOLDINGS) LIMITED