

GREENERY AREA CALCULATION

①	= 359.532 m ²	①④	= 65.139 m ²	①⑩	= 7.383 m ²
②	= 96.723 m ²	①⑤	= 4.146 m ²	①⑪	= 10.859 m ²
③	= 24.052 m ²	①⑥	= 72.397 m ²	①⑫	= 272.678 m ²
④	= 73.850 m ²	①⑦	= 3.261 m ²	①⑬	= 66.110 m ²
⑤	= 17.340 m ²	①⑧	= 7.682 m ²	①⑭	= 118.172 m ²
⑥	= 81.103 m ²	①⑨	= 100.619 m ²	①⑮	= 115.641 m ²
⑦	= 90.311 m ²	②①	= 4.546 m ²	②②	= 87.122 m ²
⑧	= 4779.479 m ²	②③	= 6.435 m ²	②③	= 83.016 m ²
⑨	= 270.943 m ²	②④	= 184.691 m ²	②④	= 4.314 m ²
⑩	= 118.776 m ²	②⑤	= 13.847 m ²	②⑤	= 138.093 m ²
⑪	= 21.632 m ²	②⑥	= 5.378 m ²	②⑥	= 548.512 m ²
⑫	= 8.009 m ²	②⑦	= 5.209 m ²	②⑦	= 502.852 m ²
⑬	= 101.188 m ²	②⑧	= 4.436 m ²	②⑧	= 870.603 m ²
⑭	= 755.141 m ²	②⑨	= 5.956 m ²	②⑨	= 121.721 m ²
⑮	= 90.083 m ²	②⑩	= 76.114 m ²	②⑩	= 39.974 m ²
⑯	= 367.581 m ²	②⑪	= 10.357 m ²	②⑪	= 248.722 x 50% = 124.361 m ²
⑰	= 43.939 m ²	②⑫	= 10.854 m ²	②⑫	= 3.633 m ²
⑱	= 66.452 m ²	②⑬	= 45.433 m ²	②⑬	= 1.883 m ²
⑲	= 29.582 m ²	②⑭	= 16.166 m ²	②⑭	= 39.821 m ²
⑳	= 5.575 m ²	②⑮	= 58.243 m ²	②⑮	= 42.398 x 50% = 21.199 m ²
㉑	= 67.306 m ²	②⑯	= 78.309 m ²	②⑯	= 76.784 m ²
㉒	= 59.533 m ²	②⑰	= 10.777 m ²	②⑰	= 78.722 m ²
㉓	= 2.800 m ²	②⑱	= 37.006 m ²	②⑱	= 16524.384 m ²
㉔	= 76.420 m ²	③①	= 133.608 m ²	③①	= 12W 16W
㉕	= 7.288 m ²	③②	= 48.316 m ²	③②	= 12W 16W
㉖	= 279.513 m ²	③③	= 87.329 m ²	③③	= 12W 16W
㉗	= 90.438 m ²	③④	= 20.011 m ²	③④	= 15W
㉘	= 73.337 m ²	③⑤	= 42.198 m ²	③⑤	= 12W 16W
㉙	= 38.418 m ²	③⑥	= 116.654 m ²	③⑥	= 12W 16W
㉚	= 147.437 m ²	③⑦	= 745.281 m ²	③⑦	= 12W 16W
㉛	= 218.696 m ²	③⑧	= 271.187 m ²	③⑧	= 12W 16W
㉜	= 36.587 m ²	③⑨	= 253.250 m ²	③⑨	= 15W
㉝	= 238.404 m ²	③⑩	= 26.352 m ²	③⑩	= 15W
㉞	= 25.883 m ²	③⑪	= 81.282 m ²	③⑪	= 12W 16W
㉟	= 115.803 m ²	③⑫	= 121.811 m ²	③⑫	= 12W 16W
㊱	= 213.834 m ²	③⑬	= 18.678 m ²	③⑬	= 12W 16W
㊲	= 8.276 m ²	③⑭	= 69.690 m ²	③⑭	= 12W 16W
㊳	= 36.885 m ²	③⑮	= 36.519 m ²	③⑮	= 12W 16W
㊴	= 15.038 m ²	③⑯	= 5.972 m ²	③⑯	= 12W 16W
㊵	= 111.702 m ²	③⑰	= 3.691 m ²	③⑰	= 12W 16W
㊶	= 43.222 m ²	③⑱	= 56.313 m ²	③⑱	= 12W 16W
㊷	= 4.081 m ²	④①	= 233.659 m ²	④①	= 12W 16W
㊸	= 24.162 m ²	④②	= 1.508 m ²	④②	= 12W 16W
㊹	= 79.340 m ²	④③	= 15.043 m ²	④③	= 12W 16W
㊺	= 110.730 m ²	④④	= 1.291 m ²	④④	= 12W 16W

ADD WATER FEATURE AREA

①	= 61.293 m ²
②	= 48.305 m ²
③	= 37.582 m ²
④	= 57.882 m ²
SUB-TOTAL	= 205.062 m²

ADD ROOF PLANTER AREA

①	= 21.072 m ²
②	= 45.245 m ²
③	= 4.233 m ²
④	= 12.314 x 50% = 6.157 m ²
⑤	= 58.799 m ²
⑥	= 26.426 m ²
⑦	= 127.014 m ²
⑧	= 39.438 m ²
⑨	= 50.714 m ²
⑩	= 10.42 x 50% = 5.21 m ²
⑪	= 36.288 m ²
⑫	= 27.782 m ²
⑬	= 58.446 m ²
⑭	= 28.126 m ²
⑮	= 126.694 m ²
⑯	= 16.746 m ²
SUB-TOTAL	= 811.935 m²

TOTAL GREEN AREA = 151 x 3.386 m²

ACTUAL SITE AREA = 56753.577 m²
GREENERY AREA AT PEDESTRIAN ZONE
 151 x 3.386 + 205.062 / 56753.577 x 100 % = 28.47 % > 15%

TOTAL GREEN AREA PROVIDED
 151 x 3.386 / 56753.577 x 100 % = 31.76 % > 30%

WATER FEATURE + GRASS PAVEMENT / TOTAL GREEN AREA
 205.062 + 124.361 + 21.199 / 151 x 3.386 x 100 % = 6.13 % < 30%

NOTIONAL SITE AREA OF 12W & 16W = 27903.293 m²
TOTAL GREEN AREA PROVIDED FOR 12W & 16W
 ① + ... + ⑩ + ... = 6648.296 m²

⑪ + ... + ⑲ = 147.180 m²
 ⑳ + ... + ㉒ = 2179.113 m²
SUB-TOTAL = 1794.589 m²

GREENERY AREA PROVIDED AT PEDESTRIAN ZONE OF 12W & 16W
 6648.296 + 147.180 / 27903.293 x 100 % = 24.39 % > 15%

TOTAL GREEN AREA PROVIDED FOR 12W & 16W
 1794.589 / 27903.293 x 100 % = 32.46 % > 30%

WATER FEATURE / TOTAL GREEN AREA PROVIDED FOR 12W & 16W
 147.180 / 1794.589 x 100 % = 8.20 % < 30%

GREENERY AREA PROVIDED FOR BUILDINGS 12W & 16W WILL BE COMPLETED BEFORE APPLICATION FOR OCCUPATION PERMIT FOR BUILDING 12W & 16W.

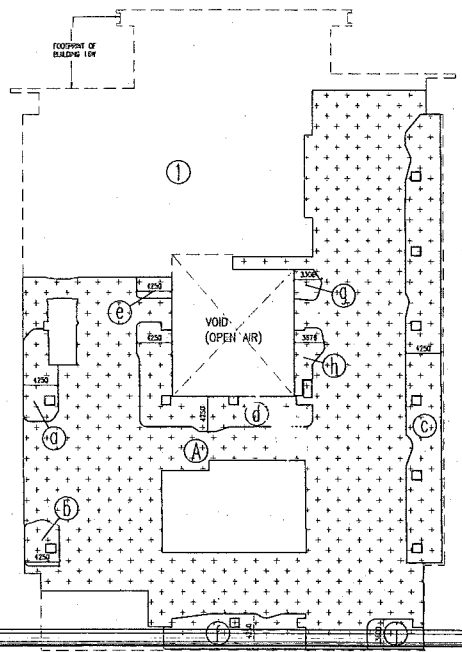
COMMUNAL PODIUM GARDEN CALCULATION

AREA OF FOOTPRINT OF BUILDING 16W
 ① = 3401.275 m²

NET GARDEN AREA PROVIDED
 ② = 2069.121 m²
 2069.121 / 3401.275 x 100% = 60.83 % > 50 %

WHERE L = 4250
GREENERY AREA PROVIDED
 ③ = 39.526 m²
 ④ = 21.587 m²
 ⑤ = 212.095 m²
 ⑥ = 107.721 m²
 ⑦ = 10.786 m²
 ⑧ = 65.916 m²
 ⑨ = 10.689 m²
 ⑩ = 19.802 m²
 ⑪ = 22.988 m²
 ⑫ = 516.020 m²

516.020 / 3401.275 x 100% = 15.17 % > 15 %



COMMUNAL PODIUM GARDEN DIAGRAM OF BUILDING 16W AT 1/F
 1:300

LEGEND

- ① IRRIGATION POINT
- ② UNCOVERED PLANTER AREA
- ③ WATER FEATURE AREA
- ④ GRASS PAVEMENT

SITE COVERAGE DIAGRAM OF GREENERY

1:500

TOLO HARBOUR

COLOURED SET

ADD REF.: 29167101(1)P7
 F.A.D. REF.: FP 824856(C)
 CAD REF. No.:
 Name:
 1) LOCATION OF IRRIGATION POINTS OR DRAINAGE PROVISION TO BE SUBMITTED SEPARATELY.

AMENDMENT

No.	Date	Description
8	04/12/2013	ED 7th Amendment
5	10/09/2013	ED 6th Amendment
4	24/05/2013	ED 5th Amendment
3	05/03/2013	ED 4th Amendment
2	03/08/2012	ED 1st Amendment
1	18/12/2011	ED 0th Amendment
-	21/09/2011	1st ED SUBMISSION

Developer: **ma**
 Quantity Surveyor: **利比 RLB Rider Leung**
 Structural Engineer: **Simon Kwok & Associates Ltd.**
 Building Services Engineer: **Simon Kwok & Associates Ltd.**

Plan Approved by CHAN CHU-KUO, Assistant Senior Building Supervisor for BUILDING AUTHORITY
 10 JAN 2014

12 & No. 16 SCIENCE PARK AVENUE, HONG KONG SCIENCE PARK, ATTN. N.T. HONG
 T.P.T.L. NO. 204

Building Title: **BUILDING 12W & 16W SITE COVERAGE OF GREENERY CALCULATION COMMUNAL PODIUM GARDEN OF BUILDING 16W CALCULATION**

Drawing Originator: **Simon Kwok & Associates Ltd.**

Scale: AS SHOWN @ A0
 Checked: YC
 Approved: EW
 Drawn: CW/SW
 Job No.: J 476
 Drawing No.: ABGP-3A1216W-LAC