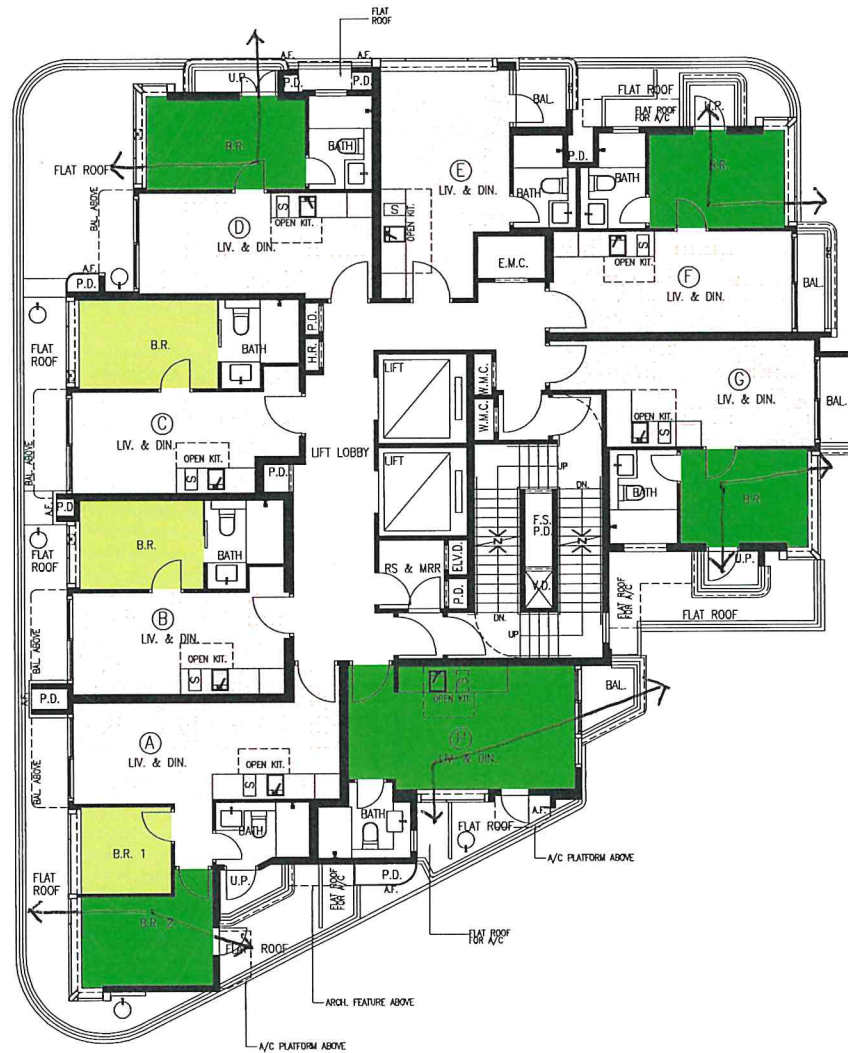


3/F FLOOR PLAN
3樓樓面平面圖



3/F

1. 44.865 sqm

2. 0

3. 17.470 sqm

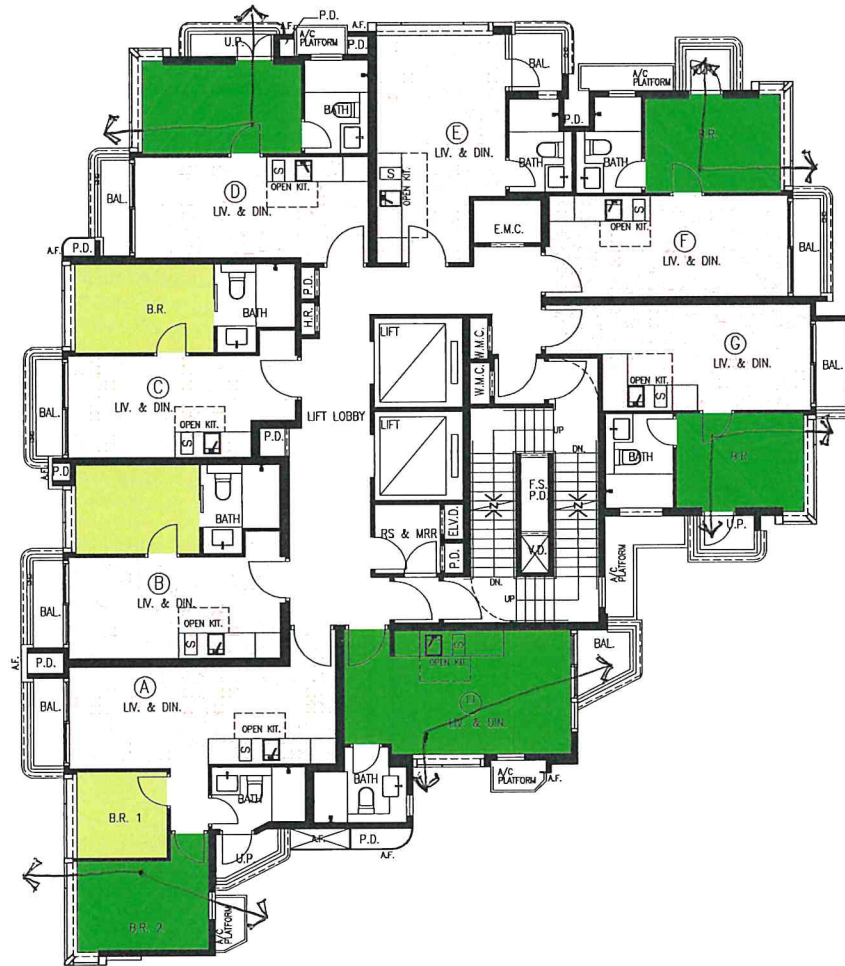
4. 97.155 sqm

= 159.49 sqm

- ① Area of habitable spaces with Cross Ventilation outside re-entrant (NVc)
- ② Area of habitable spaces with Cross Ventilation at re-entrant (NVc(at re-entrant))
- ③ Area of habitable spaces with single-sided ventilation (NVss)
- ④ Area of habitable spaces that do not satisfy any requirements of the above

SCALE/ 比例 : 0 1 2 5m (米)

5/F - 11/F FLOOR PLAN
5樓至11樓樓面平面圖



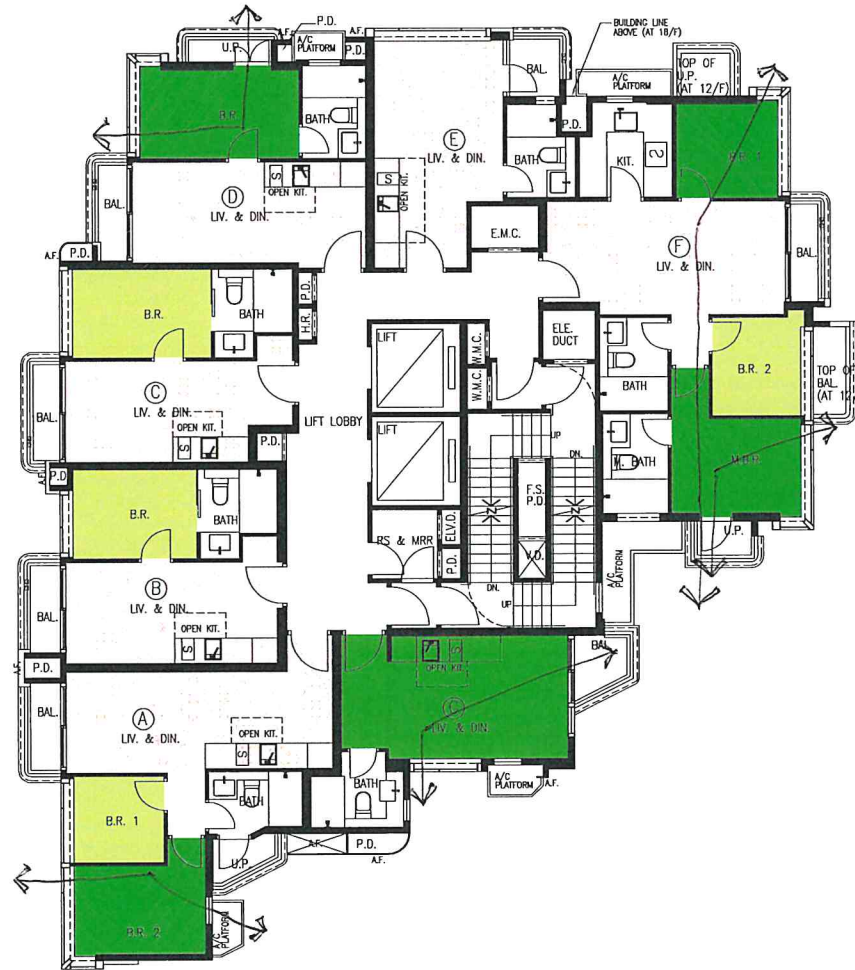
5/F - 11/F

1. $44.865 \times 7 = 314.055 \text{ sqm}$
 2. 0
 3. $17.470 \times 7 = 122.29 \text{ sqm}$
 4. $97.155 \times 7 = 680.085 \text{ sqm}$
-
- = 1116.43 sqm

- ① Area of habitable spaces with Cross Ventilation outside re-entrant (NV_c)
- ② Area of habitable spaces with Cross Ventilation at re-entrant (NV_{c(at re-entrant)})
- ③ Area of habitable spaces with single-sided ventilation (NV_{ss})
- ④ Area of habitable spaces that do not satisfy any requirements of the above

SCALE/ 比例 : 5m (米)

12/F & 15/F - 17/F FLOOR PLAN
 12樓及15樓至17樓樓面平面圖



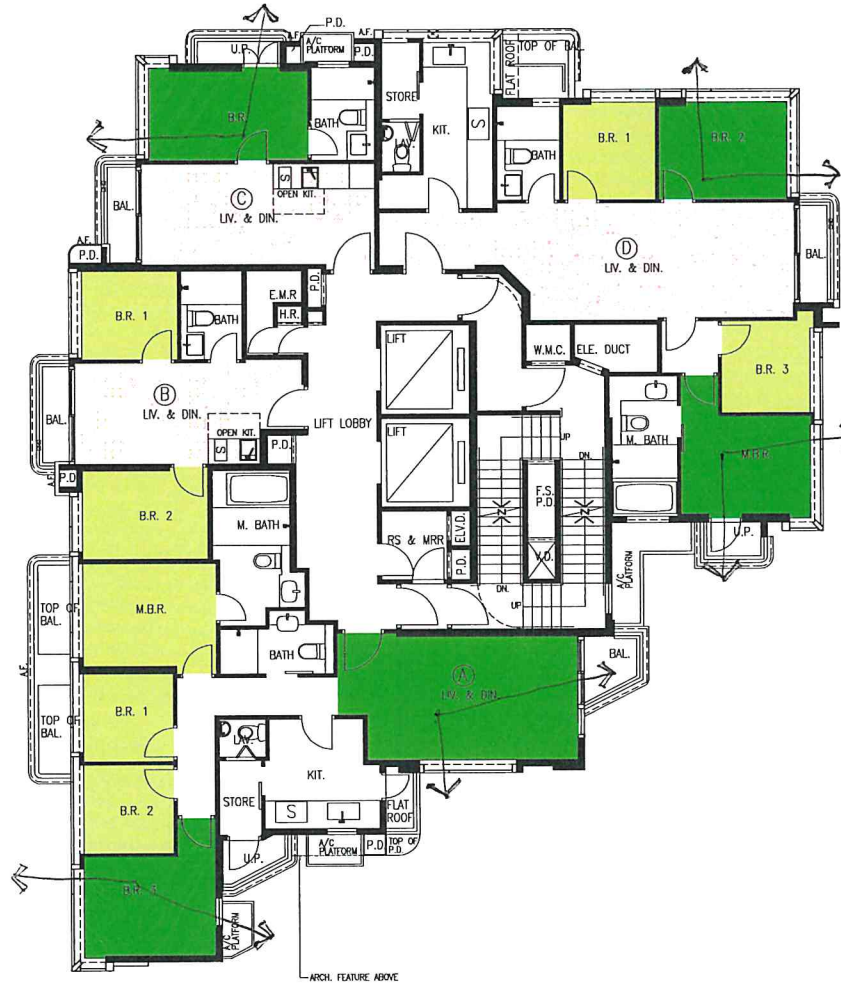
12/F - 17/F

- 1. $44.188 \times 4 = 176.752 \text{ sqm}$
 - 2. 0
 - 3. $22.445 \times 4 = 89.78 \text{ sqm}$
 - 4. $84.538 \times 4 = 338.152 \text{ sqm}$
-
- = 604.684 sqm

- ① Area of habitable spaces with Cross Ventilation outside re-entrant (NVc)
- ② Area of habitable spaces with Cross Ventilation at re-entrant (NVc(at re-entrant))
- ③ Area of habitable spaces with single-sided ventilation (NVss)
- ④ Area of habitable spaces that do not satisfy any requirements of the above

SCALE/ 比例 : 0 1 2 5m (米)

18/F FLOOR PLAN
18樓樓面平面圖



18/F

1. 47.515 sqm

2. 0

3. 37.703 sqm

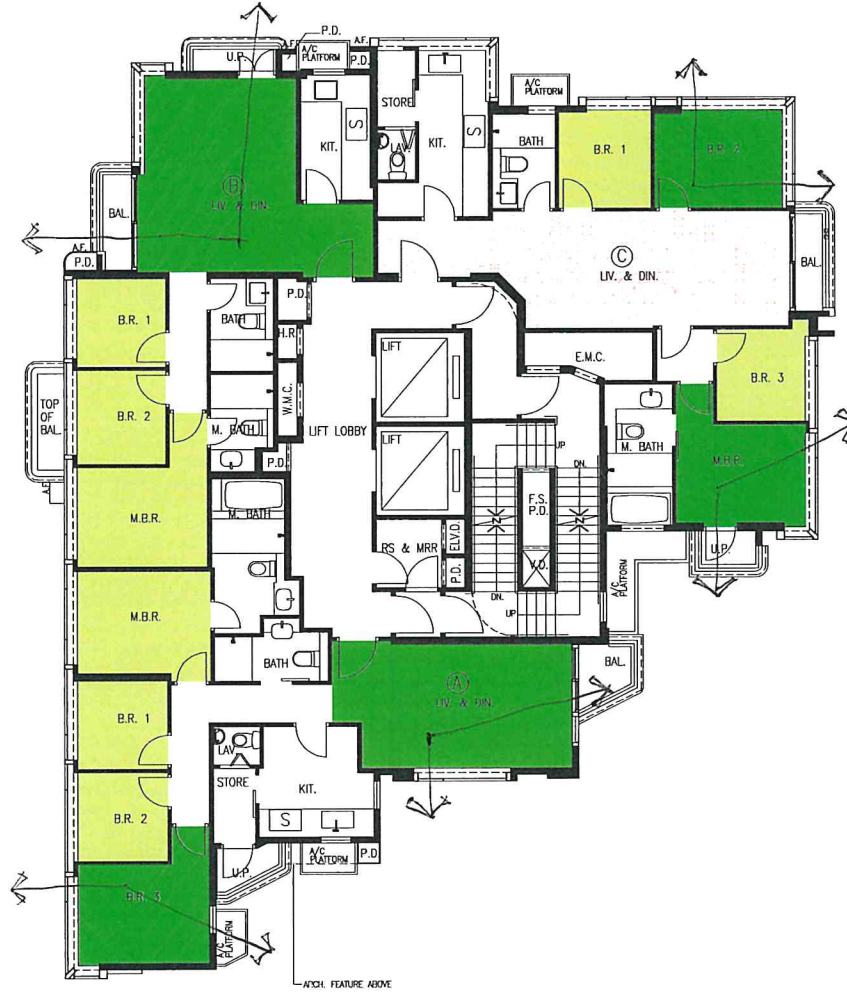
4. 48.167 sqm

= 133.385 sqm

- ① Area of habitable spaces with Cross Ventilation outside re-entrant (NVc)
- ② Area of habitable spaces with Cross Ventilation at re-entrant (NVc(at re-entrant))
- ③ Area of habitable spaces with single-sided ventilation (NVss)
- ④ Area of habitable spaces that do not satisfy any requirements of the above

SCALE/ 比例: 0 1 2 5m (米)

19/F FLOOR PLAN
19樓樓面平面圖



19/F

1. 59.646 sqm

2. 0

3. 44.094 sqm

4. 22.387 sqm

= 126.127 sqm

- ① Area of habitable spaces with Cross Ventilation outside re-entrant (NVc)
- ② Area of habitable spaces with Cross Ventilation at re-entrant (NVc(at re-entrant))
- ③ Area of habitable spaces with single-sided ventilation (NVss)
- ④ Area of habitable spaces that do not satisfy any requirements of the above

SCALE/ 比例 : 5m (米)

20/F FLOOR PLAN
20樓樓面平面圖



20/F

1. 73.531 sqm

2. 0

3. 26.430 sqm

4. 12.740 sqm

= 112.701 sqm

- ① Area of habitable spaces with Cross Ventilation outside re-entrant (NVc)
- ② Area of habitable spaces with Cross Ventilation at re-entrant (NVc(at re-entrant))
- ③ Area of habitable spaces with single-sided ventilation (NVss)
- ④ Area of habitable spaces that do not satisfy any requirements of the above

SCALE/ 比例 : 0 1 2 5m (米)

NV_{TC} Compliance Check

NV _c	32%
NV _{c(at re-entrant)}	0%
NV _{ss}	15%
Overall NV _{TC}	47%