

**SITE COVERAGE OF GREENERY**  
(PNAP APP-152 AND SPECIAL CONDITIONS CLAUSE 9 UNDER LEASE REFERS)

**CALCULATION FOR SITE COVERAGE OF GREENERY**

TOTAL SITE AREA (UNDER LEASE) = 6843.000 M<sup>2</sup>  
 REQUIRED TOTAL GREENERY AREA UNDER SBD GUIDELINE = 6843.000 M<sup>2</sup> x 20% = 1368.600 M<sup>2</sup>  
 REQUIRED TOTAL GREENERY AREA AT PRIMARY ZONE = 6843.000 M<sup>2</sup> x 20% x 50% = 684.300 M<sup>2</sup>  
 REQUIRED ADDITIONAL 10% GREENERY AREA (S.C. CLAUSE 9(b)(ii) UNDER LEASE) = 6843.000 M<sup>2</sup> x 10% = 684.300 M<sup>2</sup>

G1 = 17.791 M<sup>2</sup> G8 = 2.633 M<sup>2</sup> G15 = 133.687 M<sup>2</sup> G22 = 13.077 M<sup>2</sup> V3 = 1.324 M<sup>2</sup> V10 = 1.358 M<sup>2</sup> V17 = 2.752 M<sup>2</sup> V24 = 11.352 M<sup>2</sup> V31 = 3.361 M<sup>2</sup> V39 = 6.908 M<sup>2</sup>  
 G2 = 6.574 M<sup>2</sup> G9 = 16.191 M<sup>2</sup> G16 = 67.361 M<sup>2</sup> G23 = 22.046 M<sup>2</sup> V4 = 1.800 M<sup>2</sup> V11 = 6.790 M<sup>2</sup> V18 = 1.095 M<sup>2</sup> V25 = 1.600 M<sup>2</sup> V32 = 0.600 M<sup>2</sup> V41 = 2.162 M<sup>2</sup>  
 G3 = 15.601 M<sup>2</sup> G10 = 13.160 M<sup>2</sup> G17 = 86.260 M<sup>2</sup> G24 = 11.042 M<sup>2</sup> V5 = 0.250 M<sup>2</sup> V12 = 3.150 M<sup>2</sup> V19 = 3.538 M<sup>2</sup> V26 = 0.400 M<sup>2</sup> V33 = 2.400 M<sup>2</sup> V44 = 10.747 M<sup>2</sup>  
 G4 = 109.508 M<sup>2</sup> G11 = 7.582 M<sup>2</sup> G18 = 66.896 M<sup>2</sup> G25 = 14.825 M<sup>2</sup> V6 = 6.803 M<sup>2</sup> V13 = 0.600 M<sup>2</sup> V20 = 7.193 M<sup>2</sup> V27 = 125.505 M<sup>2</sup> V34 = 5.280 M<sup>2</sup> V45 = 6.068 M<sup>2</sup>  
 G5 = 50.849 M<sup>2</sup> G12 = 5.019 M<sup>2</sup> G19 = 685.749 M<sup>2</sup> G26 = 48.531 M<sup>2</sup> V7 = 6.123 M<sup>2</sup> V14 = 9.623 M<sup>2</sup> V21 = 17.627 M<sup>2</sup> V28 = 3.713 M<sup>2</sup> V35 = 0.854 M<sup>2</sup> V46 = 0.990 M<sup>2</sup>  
 G6 = 61.641 M<sup>2</sup> G13 = 29.436 M<sup>2</sup> G20 = 22.470 M<sup>2</sup> V8 = 3.789 M<sup>2</sup> V15 = 5.628 M<sup>2</sup> V22 = 3.604 M<sup>2</sup> V29 = 3.560 M<sup>2</sup> V36 = 70.755 M<sup>2</sup> G27 = 20.444 M<sup>2</sup>  
 G7 = 24.541 M<sup>2</sup> G14 = 47.688 M<sup>2</sup> G21 = 39.601 M<sup>2</sup> V9 = 4.943 M<sup>2</sup> V16 = 19.440 M<sup>2</sup> V23 = 2.838 M<sup>2</sup> V30 = 3.381 M<sup>2</sup> V37 = 43.346 M<sup>2</sup>

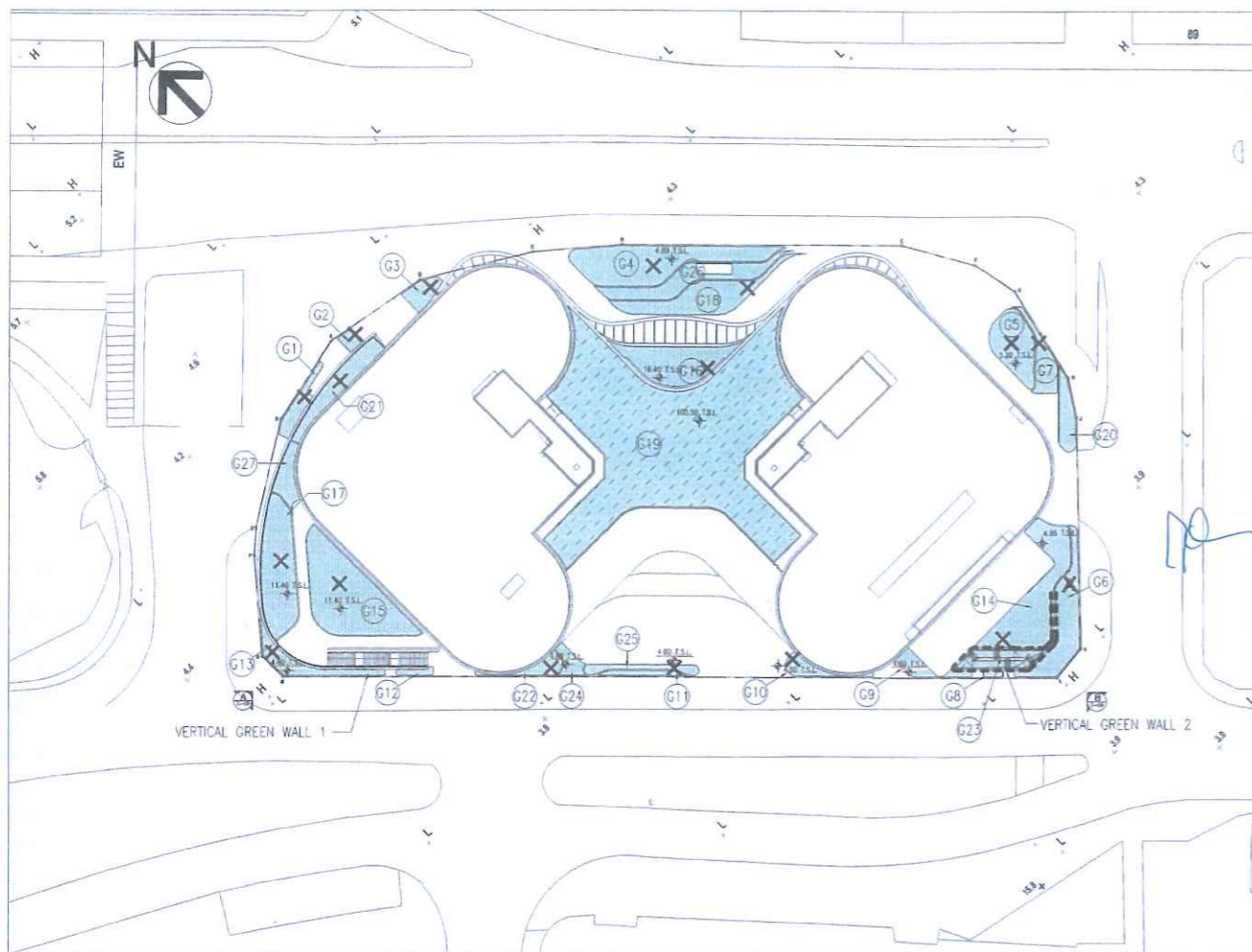
PROVIDED TOTAL GREENERY AREA = G1 + G2 + G3 + G4 + G5 + G6 + G7 + G8 + G9 + G10 + G11 + G12 + G13 + G14 + G15 + G16 + G17 + G18 + G20 + G21 + G22 + G23 + G24 + G25 + G26 + V1 + V2 + V3 + V4 + V5 + V6 + V7 + V8 + V9 + V10 + V11 + V12 + V13 + V14 + V15 + V16 + V17 + V18 + V19 + V20 + V21 + V22 + V23 + V24 + V25 + V26 + V27 + V28 + V29 + V30 + V31 + V32 + V33 + V34 + V35 + V36 + V37 + V39 + V41 + V44 + V45 + V46 + G27  
 = 1412.316 M<sup>2</sup> (20.647%) > 1368.600 M<sup>2</sup> (i.e. COMPLIED)

PROVIDED TOTAL GREENERY AREA AT PRIMARY ZONE = G1 + G2 + G3 + G4 + G5 + G6 + G7 + G8 + G9 + G10 + G11 + G12 + G13 + G14 + G15 + G16 + G17 + G18 + G20 + G21 + G22 + G23 + G24 + G25 + G26 + V1 + V2 + V3 + V4 + V5 + V6 + V7 + V8 + V9 + V10 + V11 + V12 + V13 + V14 + V15 + V16 + V17 + V18 + V19 + V20 + V21 + V22 + V23 + V24 + V25 + V26 + V27 + V28 + V29 + V30 + V31 + V32 + V33 + V34 + V35 + V36 + V37 + V39 + V41 + V44 + V45 + V46 + G27  
 = 1412.316 M<sup>2</sup> > 684.300 M<sup>2</sup> (i.e. COMPLIED)

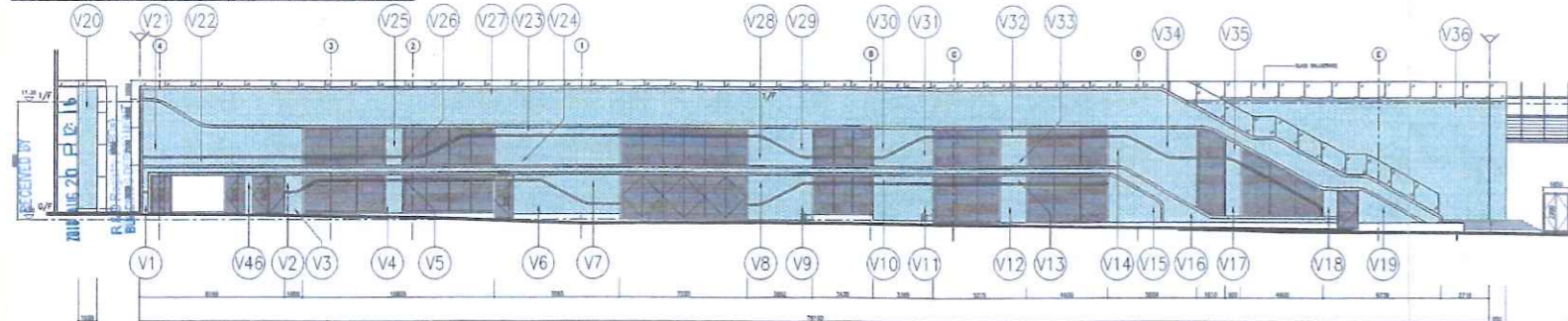
PROVIDED TOTAL AREA OF GREENING FEATURE = V1 + V2 + V3 + V4 + V5 + V6 + V7 + V8 + V9 + V10 + V11 + V12 + V13 + V14 + V15 + V16 + V17 + V18 + V19 + V21 + V22 + V23 + V24 + V25 + V26 + V27 + V28 + V29 + V30 + V31 + V32 + V33 + V34 + V35 + V36 + V37 + V39 + V41 + V44 + V45 + V46  
 = 408.482 M<sup>2</sup>

PERCENTAGE OF GREENERY AREA PROVIDED BY GREENING FEATURE = 408.482 / 1368.600 x 100% = 29.847% < 30% (i.e. COMPLIED)

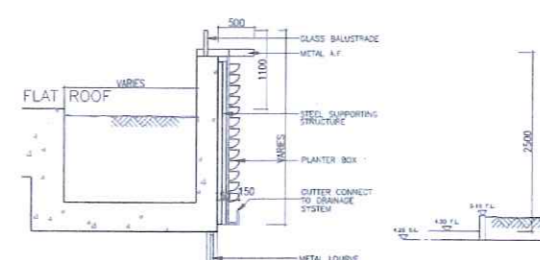
PROVIDED ADDITIONAL 10% GREEN ROOF (FOR DLO ONLY) (S.C. CLAUSE 9(b)(ii) UNDER LEASE REFERS) = G19  
 = 685.749 M<sup>2</sup> > 684.300 M<sup>2</sup> (i.e. COMPLIED)



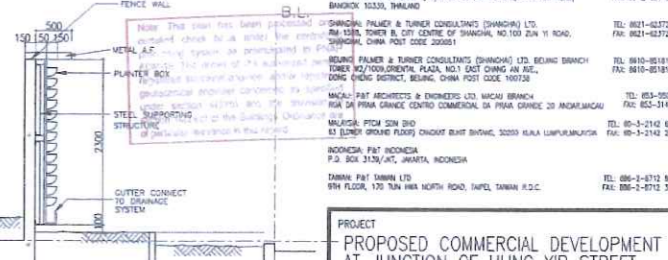
SITE PLAN SHOWING SITE COVERAGE OF GREENERY



UNFOLDED ELEVATION A (VERTICAL GREEN WALL 1)  
SCALE 1 : 200

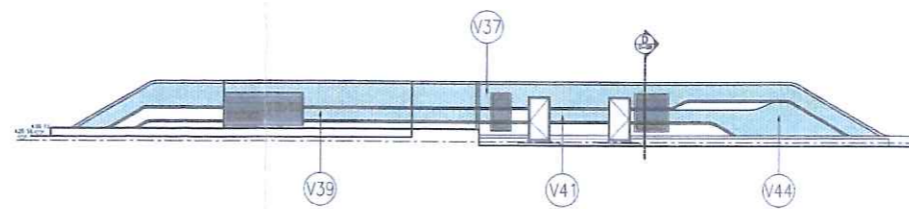


SECTION C  
SCALE 1 : 50



SECTION D  
SCALE 1 : 50

- LEGEND**
- SITE COVERAGE OF GREENERY AT PEDESTRIAN ZONE
  - ADDITIONAL 10% GREENERY UNDER LEASE (SPECIAL CONDITION S.C. 9(b)(ii) REFERS)
  - X IRRIGATION POINT AND DRAINAGE POINT FOR EVERY PLANTER
  - GREENING FEATURE (VERTICAL GREEN)



UNFOLDED ELEVATION B (VERTICAL GREEN WALL 2)  
SCALE 1 : 200

*Signature*  
 Ayesha K.T. Chan  
 Approved Person (Architect)  
 Ayesha Chan

F	08/2016	GEN. REV.
L	07/2018	GEN. REV.
D	06/2017	GEN. REV.
C	12/2016	GEN. REV.
B	04/2016	GEN. REV.
A	12/2015	GEN. REV.
NO.	DATE	AMENDMENT

**P&T Architects and Engineers Ltd**

HONG KONG: P&T ARCHITECTS AND ENGINEERS LTD / PALMER & TURNER INTERNATIONAL INC.  
 4/F, 431 PACE STREET, NORTH POINT, HONG KONG  
 TEL: 852-2572 8275  
 FAX: 852-2581 3834

SINGAPORE: P&T CONSULTANTS PTE LTD  
 2300 CLIFTON CENTRE, 24 RAFFLES PLACE, SINGAPORE 040211  
 TEL: 65-6533 3011  
 FAX: 65-6533 3283

THAILAND: PALMER & TURNER (THAILAND) LTD.  
 8/100 CHULACHONGKORJIT RD., SUITE 211-4 3RD FLOOR, SANGHVI BLDG., BANGKOK 10330, THAILAND  
 TEL: 66-2-651 9190  
 FAX: 66-2-651 9170

SHANGHAI: PALMER & TURNER CONSULTANTS (SHANGHAI) LTD.  
 1508 TOWER B, CITY CENTRE OF SHANGHAI, NO.100 ZUN YI ROAD, CHINA POST CODE 200001  
 TEL: 8621-62773888  
 FAX: 8621-62772228

BEIJING: PALMER & TURNER CONSULTANTS (BEIJING) LTD.  
 TOWER NO.100/SHIJIEMEN PLAZA, NO.1 EAST CHANG AN AVE., CHONG FENG DISTRICT, BEIJING, CHINA POST CODE 100020  
 TEL: 8610-65181614  
 FAX: 8610-65181635

INDONESIA: P&T ARCHITECTS & ENGINEERS LTD. SINGAPORE BRANCH  
 1001 DA PRA GRANCE CENTRE COMMERCIAL SA PRIMA GRANCE 20 ANDONGMANGKI  
 TEL: 62-3-525241  
 FAX: 62-3-514214

MALAYSIA: P&T S&P SDN BHD  
 61 BLENDED FLOOR FLOORS CHONGAT BENT BAYANG, 32000 KUALA LUMPUR, MALAYSIA  
 TEL: 60-3-2142 8253  
 FAX: 60-3-2142 2388

INDONESIA: P&T ARCHITECTS  
 P.O. BOX 12074, JAKARTA, INDONESIA  
 TEL: 62-21-6712 8888  
 FAX: 62-21-6712 3682

TANJANG PRAJA: P&T TANJANG LTD  
 9TH FLOOR, 170 TANJANG NORTH ROAD, JAPAL TANJANG R.D.C.  
 TEL: 62-31-8712 8888  
 FAX: 62-31-8712 3682

PROJECT  
 PROPOSED COMMERCIAL DEVELOPMENT  
 AT JUNCTION OF HUNG YIP STREET,  
 WAI YIP STREET, SHUN YIP STREET  
 AND HOI BUN ROAD, KWUN TONG,  
 KOWLOON, N.K.I.L. 6512

DRAWING  
 DIAGRAM OF COMPLIANCE TO S.B.D.  
 GUIDELINE AND S.C. CLAUSE 9  
 UNDER LEASE

SCALE	1:500	NUMBER	5122
DATE	07/2015		C-09
DRAWN			
CHECKED			

**STATEMENT II: THE WORKS SHOWN ON THESE PLANS ARE TYPE II BUILDING WORKS IN RESPECT OF WHICH CONSENT IS APPLIED FOR THE PURPOSE OF FAST TRACK CONSENT APPLICATION UNDER REGULATION 33 OF THE BUILDING (ADMINISTRATION) REGULATIONS.**

- ALL DIMENSIONS ARE IN MILLIMETER EXCEPT OTHERWISE NOTED
  - DO NOT SCALE DRAWING
  - ALL MEASUREMENTS SHOULD BE VERIFIED ON SITE
- THE OWNERSHIP OF THE COPYRIGHT IN THIS DRAWING IS RETAINED BY P&T ARCHITECTS AND ENGINEERS LTD. NO REPRODUCTION OR CHANGES TO THIS DRAWING MUST BE MADE WITHOUT THE WRITTEN PERMISSION OF P&T ARCHITECTS AND ENGINEERS LTD.