

## SITE COVERAGE OF GREENERY AREA CALCULATIONS

SITE AREA =  $1000 \text{ m}^2 \leq 2596 \text{ m}^2 < 20000 \text{ m}^2$

REQUIRED GREENERY AREA AT PRIMARY ZONE OVER SITE AREA = 10%  
= 259.60 m<sup>2</sup>

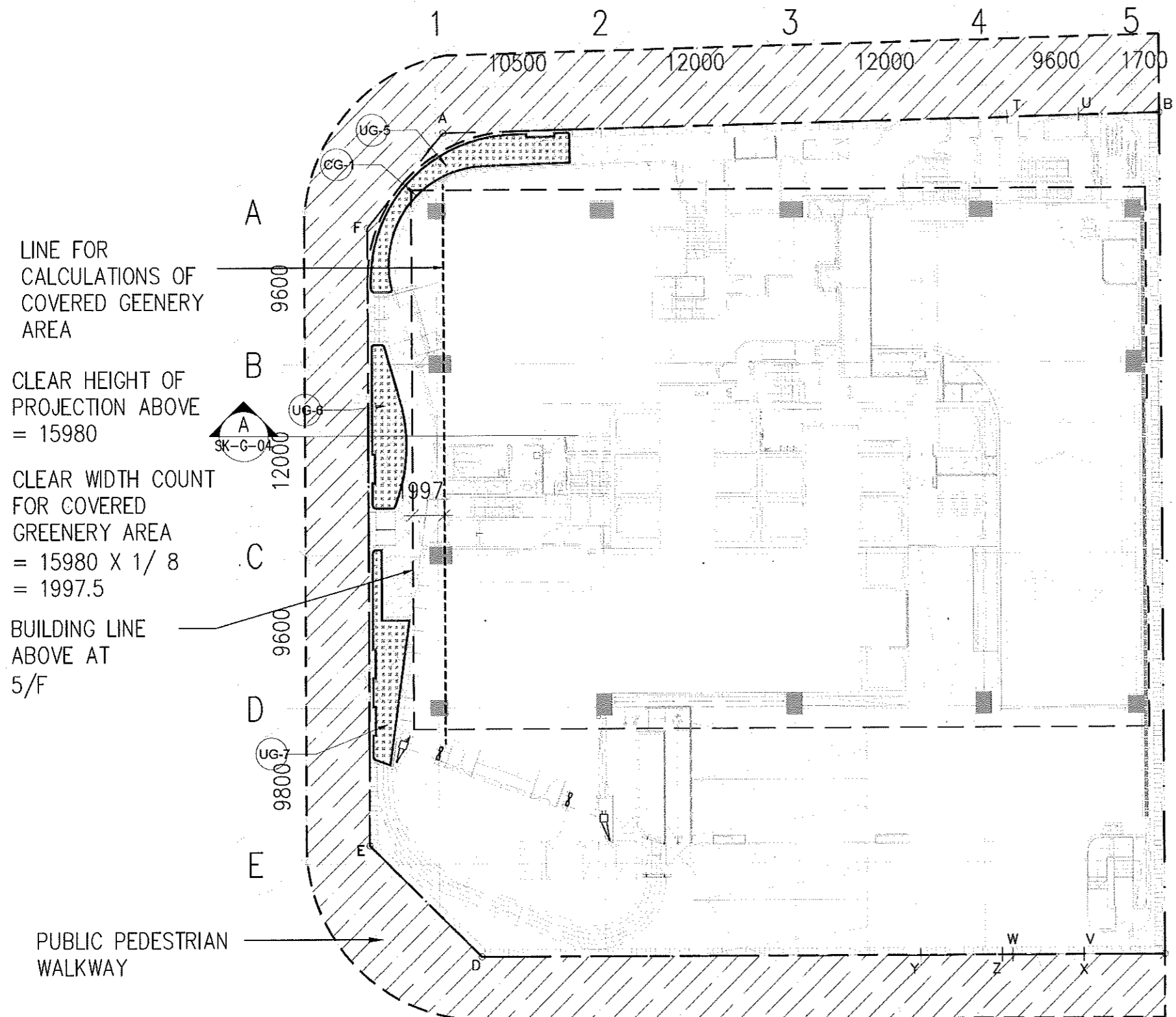
REQUIRED MINIMUM SITE COVERAGE OF GREENERY OVER SITE AREA = 20%  
= 519.20 m<sup>2</sup>

	GREENERY AREA	VERTICAL GREENING
G/F	57.813 s.m.	137.029 s.m.
1/F	74.126 s.m.	
2/F	252.797 s.m.	
SUB-TOTAL	521.765 s.m. > 259.60 s.m. (PRIMARY ZONE)	
TOTAL	521.765 s.m. > 519.20 s.m.	

REQUIRED MAXIMUM VERTICAL GREENING OF TOTAL GREENERY AREA = LESS THAN 30%

$521.765 \text{ s.m.} \times 30\% = 156.530 \text{ s.m.}$

PROPOSED VERTICAL GREENING AREA = 137.029 s.m. < 156.530 s.m.



GREENERY AREA DIAGRAM OF G/F  
(1 : 300)

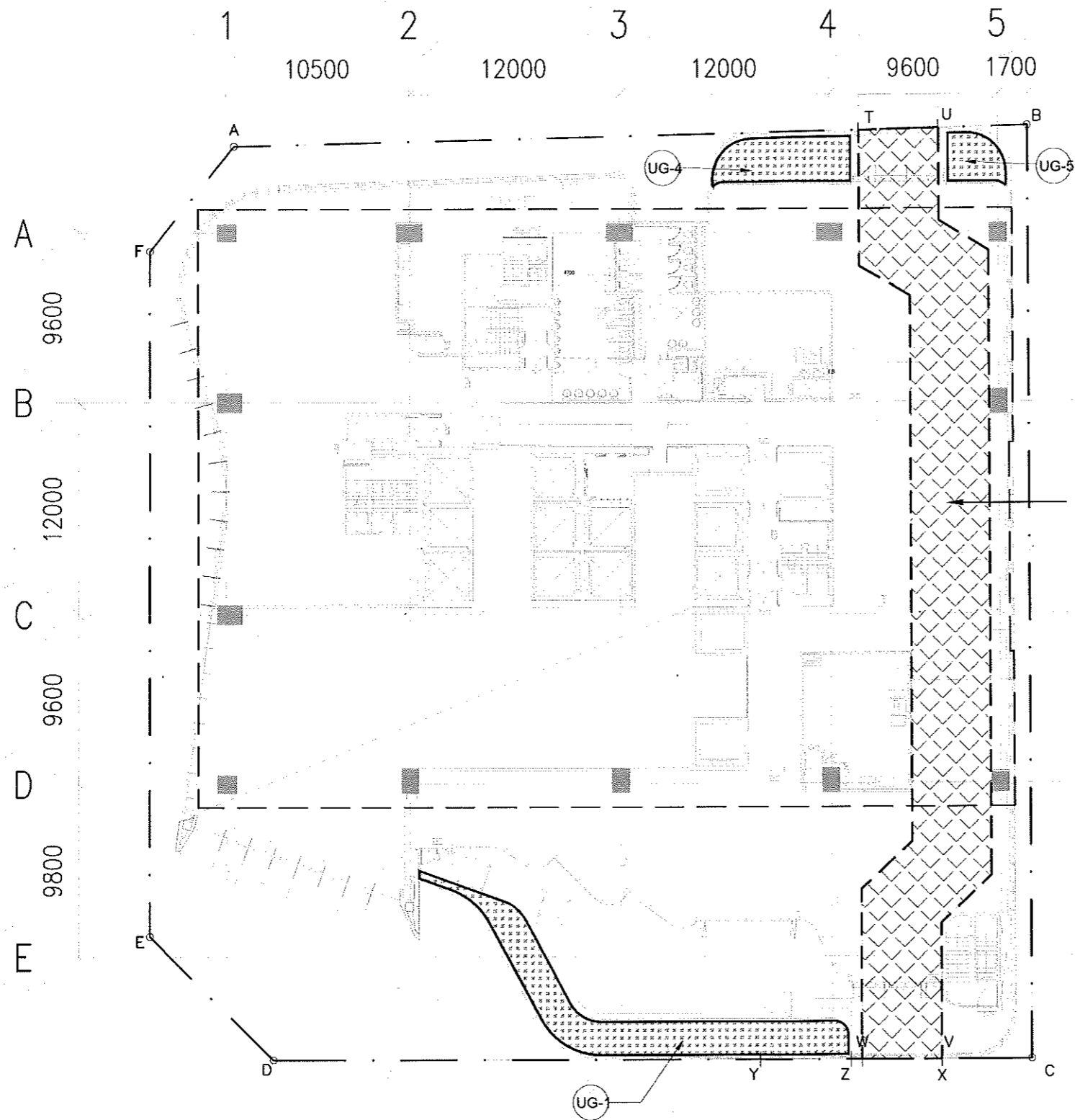
## GREENERY AREA CALCULATIONS AT G/F

UNCOVERED GREENERY AREA	COVERED GREENERY AREA
UG-5 = 23.272 s.m.	CG-1 = 0.256 s.m.
UG-6 = 17.349 s.m.	= 0.256 s.m.
UG-7 = 16.936 s.m.	
TOTAL = 57.557 s.m.	

### TOTAL GREENERY AREA AT G/F

$57.557 \text{ s.m.} + 0.256 \text{ s.m.}$   
= 57.813 s.m.

PROPOSED COMMERCIAL DEVELOPMENT - NEW KOWLOON INLAND LOT NO. 6311



GREENERY AREA CALCULATIONS AT 1/F  
UNCOVERED GREENERY AREA

UG-1 = 47.511 s.m.

UG-4 = 18.573 s.m.

UG-5 = 8.042 s.m.

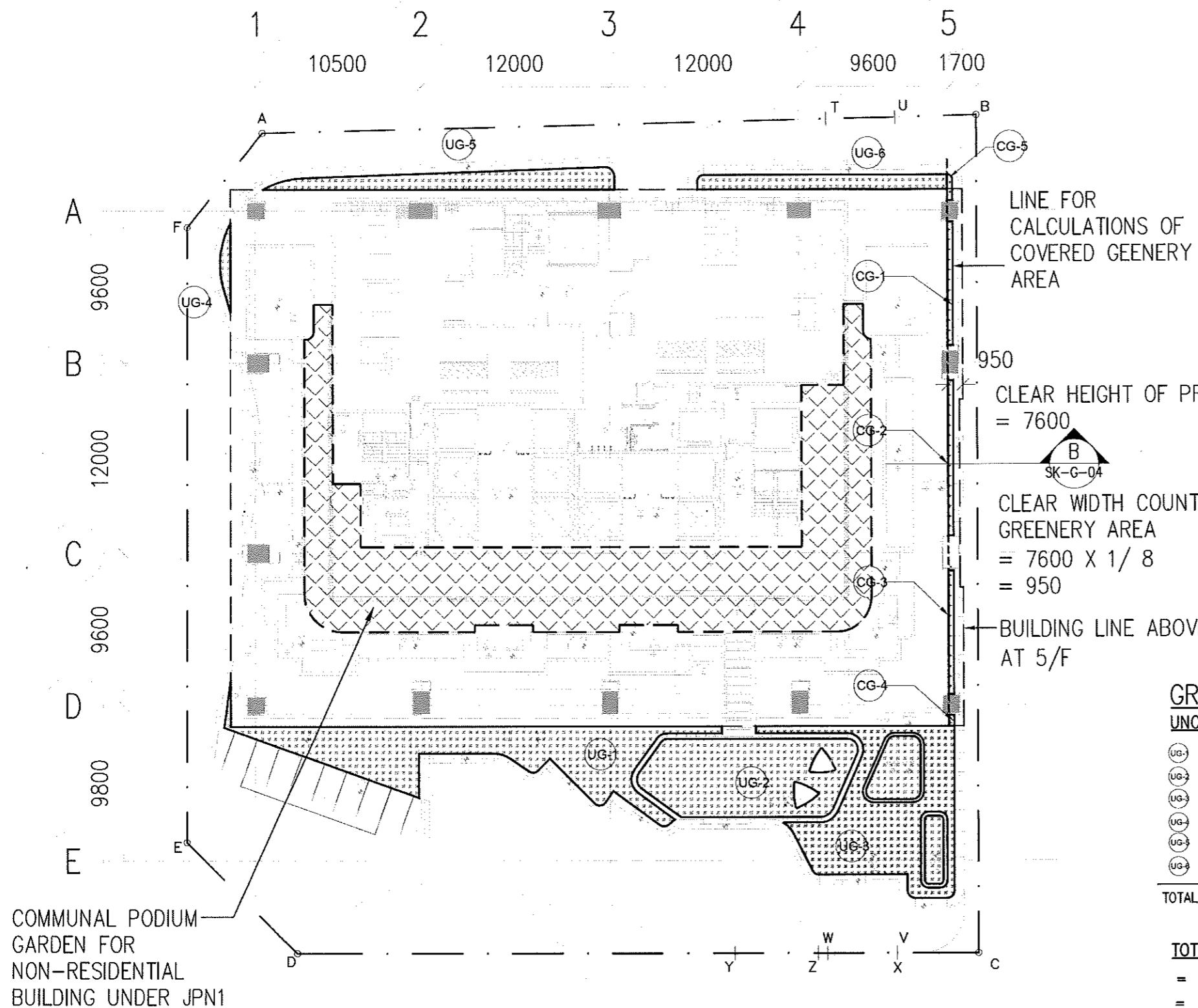
TOTAL = 74.126 s.m.

TOTAL GREENERY AREA AT 1/E

= 74.126 s.m.

GREENERY AREA DIAGRAM OF 1/F  
 (1 : 300)

PROPOSED COMMERCIAL DEVELOPMENT - NEW KOWLOON INLAND LOT NO. 6311



LINE FOR CALCULATIONS OF COVERED GEENERY AREA

CLEAR HEIGHT OF PROJECTION ABOVE = 7600

CLEAR WIDTH COUNT FOR COVERED GEENERY AREA = 7600 X 1/ 8 = 950

BUILDING LINE ABOVE AT 5/F

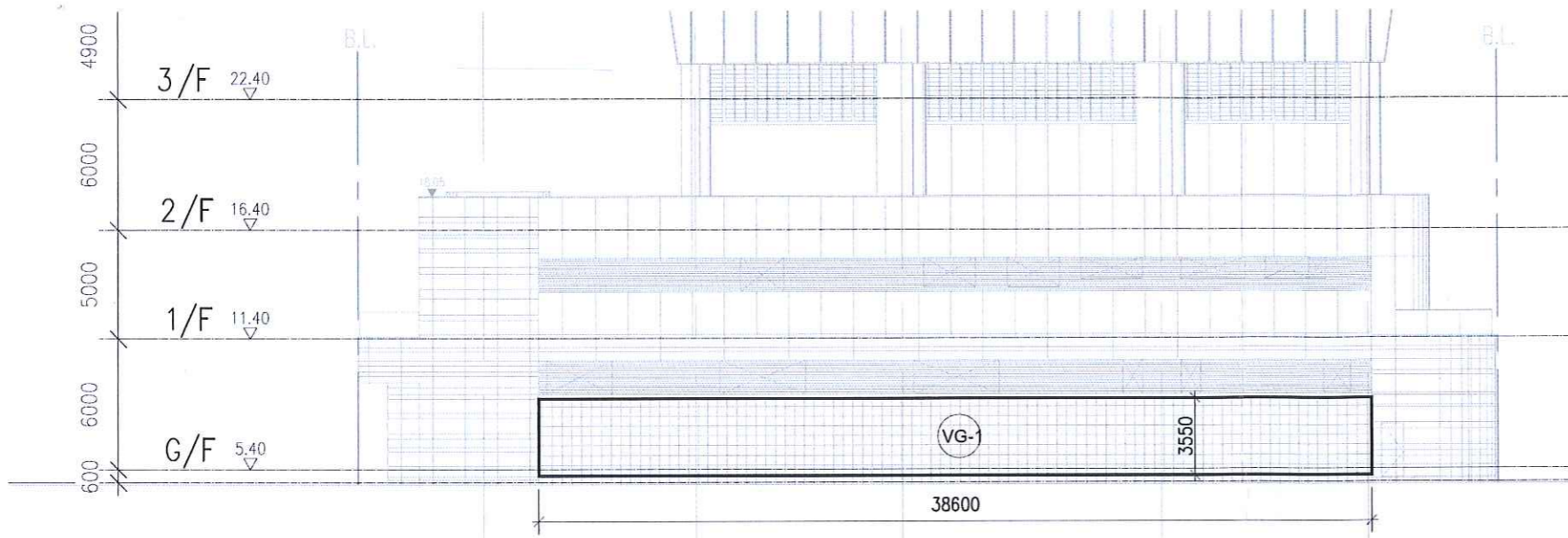
**GREENERY AREA CALCULATIONS AT 2/F**

UNCOVERED GREENERY AREA		COVERED GREENERY AREA	
UG-1	= 72.937 s.m.	CG-1	= 2.643 s.m.
UG-2	= 57.212 s.m.	CG-2	= 3.323 s.m.
UG-3	= 73.508 s.m.	CG-3	= 2.645 s.m.
UG-4	= 2.417 s.m.	CG-4	= 0.234 s.m.
UG-5	= 22.779 s.m.	CG-5	= 0.530 s.m.
UG-6	= 14.569 s.m.		
<b>TOTAL</b>	<b>= 243.422 s.m.</b>		<b>= 9.375 s.m.</b>

**TOTAL GREENERY AREA AT 2/F**  
 = 243.422 s.m. + 9.375 s.m.  
 = 252.797 s.m.

**GREENERY AREA DIAGRAM OF 2/F**  
 ( 1 : 300)

**PROPOSED COMMERCIAL DEVELOPMENT - NEW KOWLOON INLAND LOT NO. 6311**



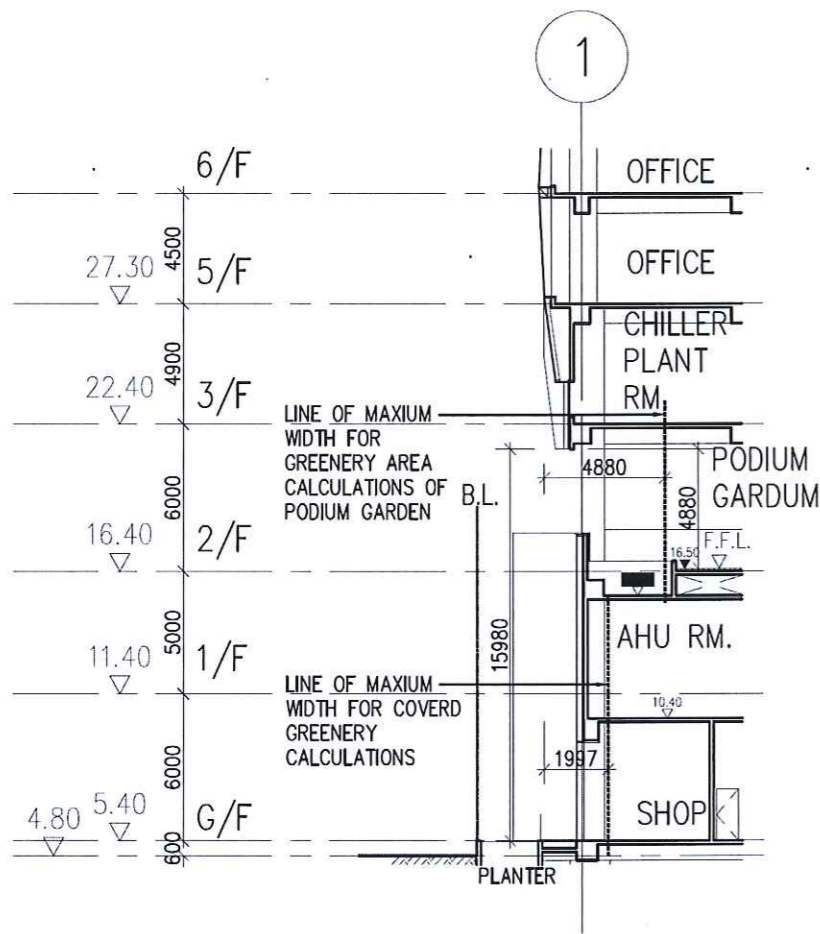
VERTICAL GREENERY AREA DIAGRAM  
ELEVATION - C (1 : 300)

VERTICAL GREENERY AREA CALCULATIONS

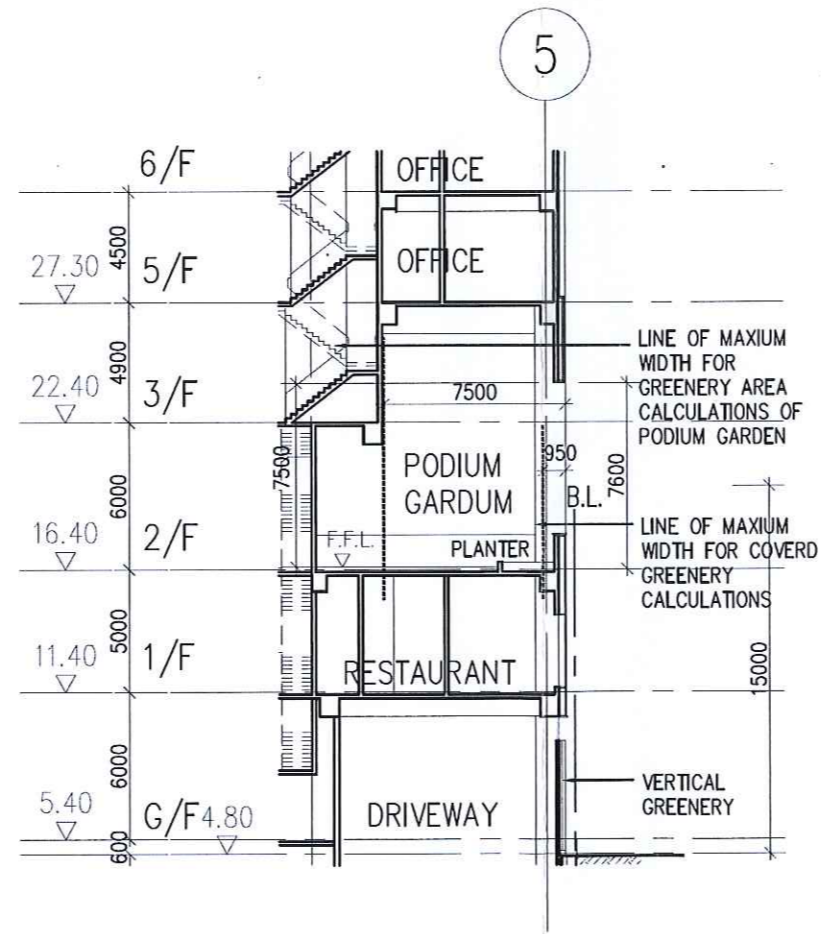
VERTICAL GREENERY AREA

VG-1 = 137.029 s.m.

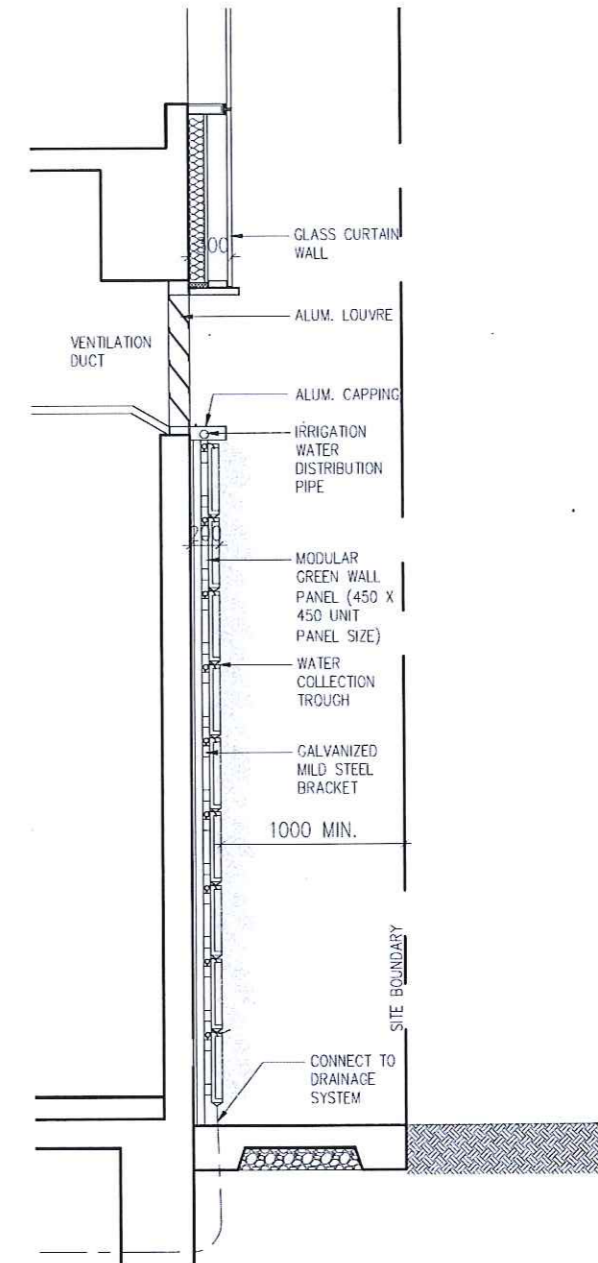
TOTAL = 137.029 s.m.



SECTION A - A (1 : 300)



SECTION B - B (1 : 300)



VERTICAL GREENERY SECTION  
(1 : 50)

PROPOSED COMMERCIAL DEVELOPMENT - NEW KOWLOON INLAND LOT NO. 6311