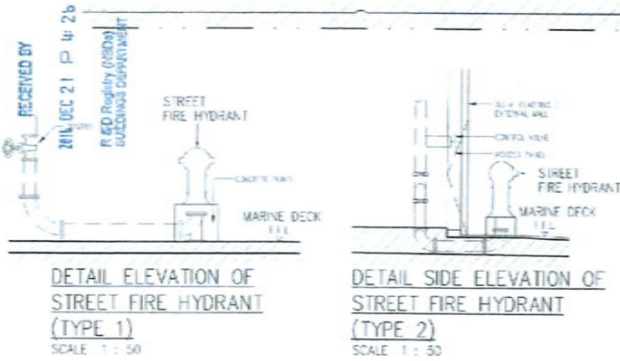
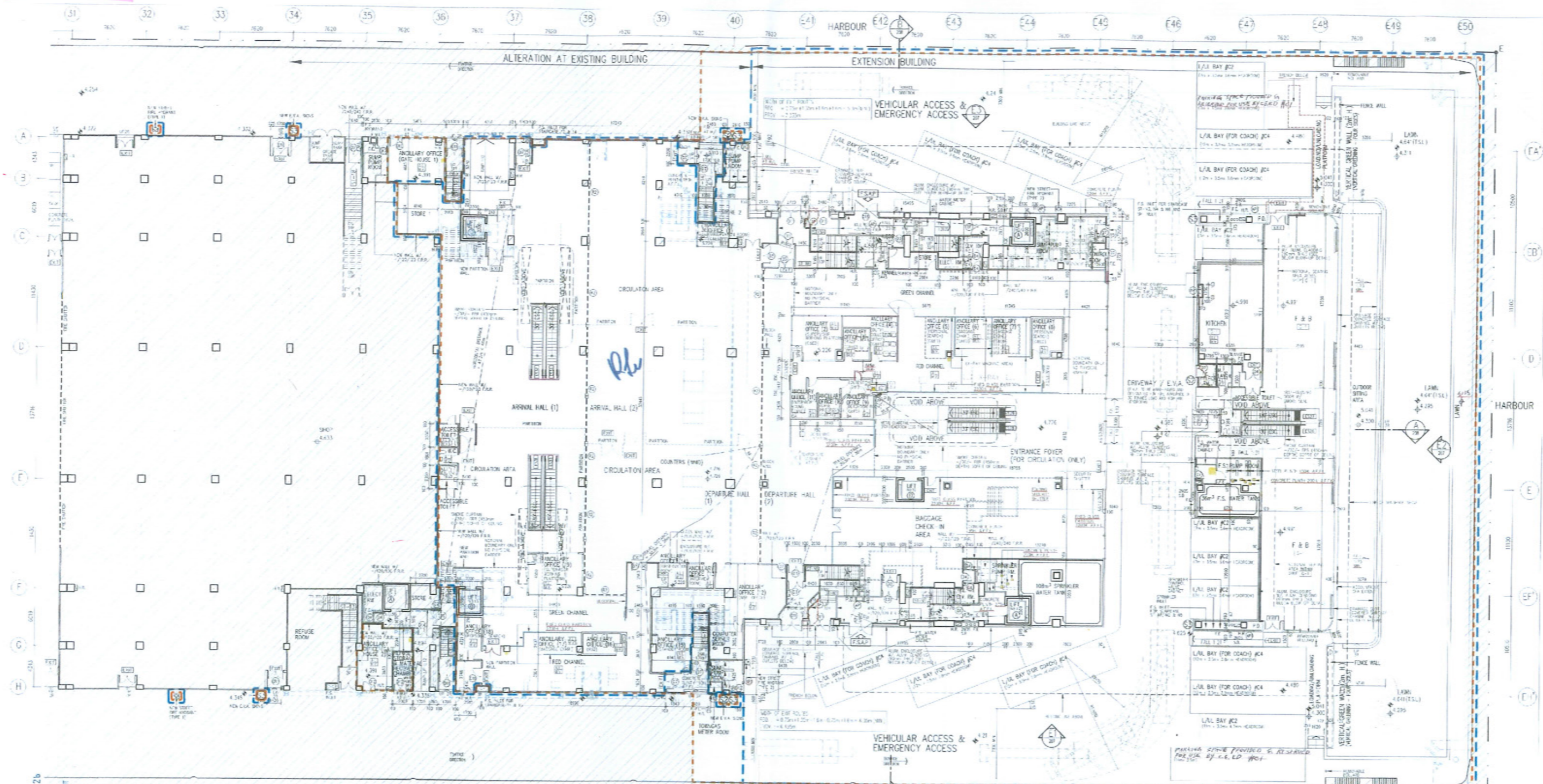


* Greenery Areas in the Common Parts (for letter 08097KL/0371 dated 24 Feb 2017)



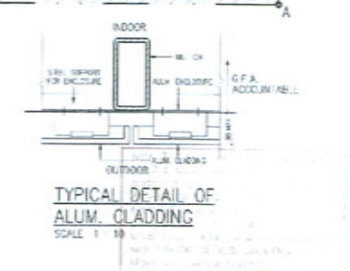
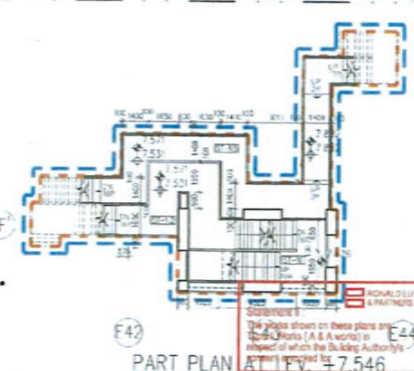
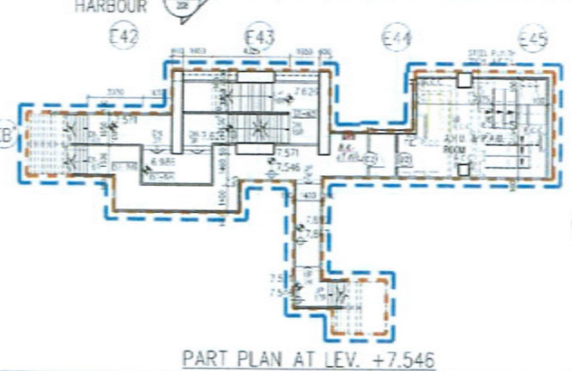
MARINE DECK FLOOR PLAN

LOADING & UNLOADING PROVISION FOR PROPOSED SETAN AREA AT EXTENSION
 MARINE TON CEA (REFER DNG NO 2004)
 (00) (000000) (00) (00) = 823,019 SW
 BOX 1 C/O A = 207,078 SW
 BOX 2 C/O A = 238,980 SW
 BOX 3 C/O A = 145,702 SW
 TOTAL C/O A = 738,670 SW
 NO OF PARKING REQUIRED = (738,670 / 100) / 10 = 73.867 / 10 = 7.3867 ≈ 8 SW
 NO OF PARKING PROVIDED = 6 SW

CARPON PROVISION FOR PROPOSED SETAN AREA AT EXTENSION
 NO OF PARKING REQUIRED = (738,670 / 200) / 10 = 36.9335 / 10 = 3.69335 ≈ 4 SW
 NO OF PARKING PROVIDED = 4 SW

LEGEND:
 - HATCHING AREA FOR REFERENCE ONLY, NOT FORMING PART OF THIS AREA WORKS
 - FINISHING WORK TO BE UNDO
 - SHIMMER SLAB
 - STAGE 1 OF BA14
 - STAGE 2 OF BA14
 - STAGE 3 OF BA14 / BA13
 - STAGE 4 OF BA14
 - STAGE 3 OF F3/501 FOR ISSUANCE OF F.S. 17

EVA MARKS
 (S) HATCHING AREA AT OVERHEAD
 (A) LOCATION SIGN REFLECTOR - IN FORM OF CARAVANWAY (NOT MORE THAN 100)
 (P) NO PARKING SIGN (NOT MORE THAN 50)



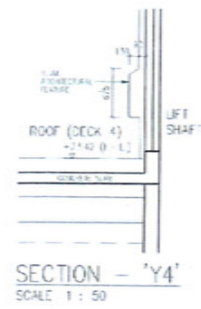
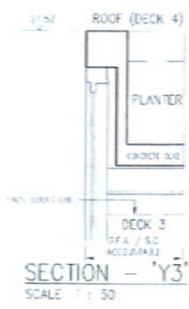
Rev.	Description	Urban	Checked	Approved	Date	Rev.	Description	Urban	Checked	Approved	Date
A	GENERAL REVISION	L-W	CC	KI	01/04/10	M	13th SUBMISSION	L-W	COH/CH	KI	03/15
B	2ND SUBMISSION	L-W	CC	KI	05/07/10	N	14th SUBMISSION	L-W	COH/CH	KI	08/15
C	4th SUBMISSION	L-W	CC	KI	06/12	P	15th SUBMISSION	L-W	COH/CH	KI	10/15
D	5th SUBMISSION	L-W	CC	KI	07/13	Q	16th SUBMISSION	L-W	COH/CH	KI	12/15
E	6th SUBMISSION	L-W	CC	KI	12/13						
F	7th SUBMISSION	L-W	CC	KI	03/14						
G	8th SUBMISSION	L-W	CC	KI	08/14						
H	9th SUBMISSION	L-W	CC	KI	07/15						
J	10th SUBMISSION	L-W	CC	KI	07/15						
K	11th SUBMISSION	L-W	CC	KI	08/15						
L	12th SUBMISSION	L-W	CC	KI	07/16						

RONALD LU & PARTNERS
 ARCHITECTS
 Ronald Lu & Partners (Hong Kong) Ltd.
 23rd Floor, Wai Chung House,
 233 Queen's Road East,
 Wanchai, Hong Kong
 Tel: (852) 2891 2212
 Fax: (852) 2894 5442

Project Title: MARCO POLO H.K. HOTEL AND OCEAN TERMINAL / COMMERCIAL DEVELOPMENT FOR OCEAN TERMINAL EXTENSION, CANTON ROAD, TSIM SHA TSUI, KOWLOON
 Drawing Title: MARINE DECK FLOOR PLAN (STAGE 3 OF BA14 / BA13)

Project No: DR09/KL
 Issue Date: DEC. 2016
 Scale: 1:200
 Drawing No: 202

Authorised Person's Signature: *Rouly*
 LU Yuen Cheung Ronald
 Authorised Person (Architect)
 Client's Approval: *[Signature]*
 Plan Approved: 1 & JAN 2017



PART PLAN AT LEV. +27.23

SECTION - 'X8' SCALE 1:50

PART PLAN AT LEV. +27.70

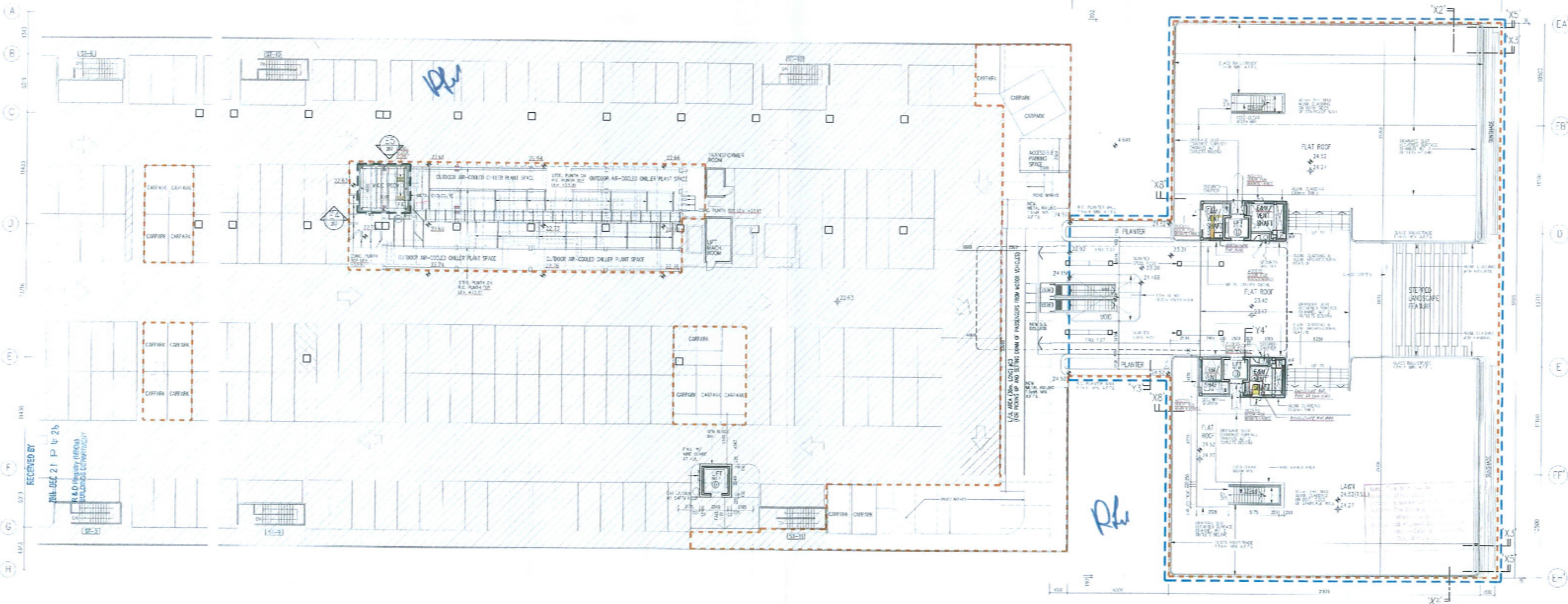
PART PLAN OF ROOF (FOR F.S.D. INFORMATION ONLY) SCALE 1:250

PART PLAN AT LEV. +27.90

- LEGEND :
- JCS PROVISION ACCORDING TO LEV. NO. DRAWING
- LEGEND :
- MATCHING AREA FOR REFERENCE ONLY, NOT FORMING PART OF THIS AREA WORKS
 - EXISTING WORK TO BE DEMOLISHED
 - SUNKEN SLAB
 - STAGE 1 OF BA14
 - STAGE 2 OF BA14
 - STAGE 3 OF BA14 / BA13
 - STAGE 4 OF BA14
 - STAGE 3 OF FSI/501 FOR ISSUANCE OF F.S. 172
 - STAGE 3A OF FSI/501 FOR ISSUANCE OF F.S. 172 (FOR FSI'S INFORMATION ONLY)

ALTERATION AT EXISTING BUILDING

EXTENSION BUILDING



ROOF PLAN (DECK 4)

Statement: The works shown on these plans are Type B Works (A & B) and in respect of which the Building Authority's consent is applied for.

RONALD LU & PARTNERS

Buildings Department

Amended plan

Rev.	Description	Drawn	Checked	Approved	Date	By	Description	Drawn	Checked	Approved	Date
A	GENERAL REMISION	LHW	COH	K	01/04/16	M	13 TH SUBMISSION	LHW	CCH/CH	K	03/16
B	2ND SUBMISSION	LHW	COH	K	05/07/16	N	14 TH SUBMISSION	LHW	CCH/CH	K	08/16
C	4 TH SUBMISSION	LHW	COH	K	06/12/16	P	15 TH SUBMISSION	LHW	CCH/CH	K	12/16
D	5 TH SUBMISSION	LHW	COH	K	09/13/16	Q	16 TH SUBMISSION	LHW	CCH/CH	K	12/16
E	6 TH SUBMISSION	LHW	COH	K	12/13/16						
F	7 TH SUBMISSION	LHW	COH	K	03/14/16						
G	8 TH SUBMISSION	LHW	COH	K	08/14/16						
H	9 TH SUBMISSION	LHW	COH	K	02/15/16						
I	10 TH SUBMISSION	LHW	COH	K	07/15/16						
J	11 TH SUBMISSION	LHW	COH	K	08/15/16						
K	12 TH SUBMISSION	LHW	COH	K	01/16/16						

RONALD LU & PARTNERS

ARCHITECTS (REGISTERED) INTERIOR DESIGNERS

Ronald Lu & Partners (Hong Kong) Ltd.
 呂元祥建築師事務所(香港)有限公司

35/F, Plover House, 253 Queen's Road East, Wanchai, Hong Kong

Tel: (852) 2891 2212
 Fax: (852) 2834 2442

Project Title: MARCO POLO H.K. HOTEL AND OCEAN TERMINAL / COMMERCIAL DEVELOPMENT FOR OCEAN TERMINAL EXTENSION CANTON ROAD, TSM SHA TSUI, KOWLOON

Drawing Title: ROOF PLAN (STAGE 3 OF BA14 / BA13)

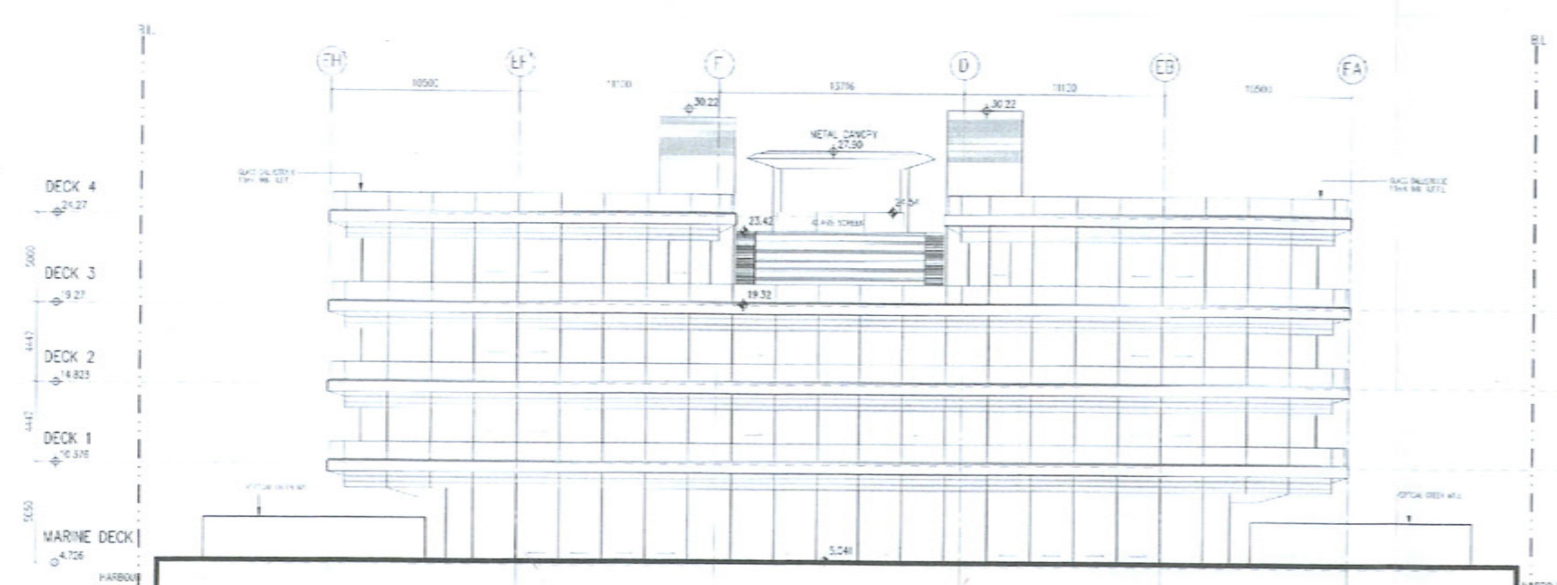
Project No: 28097KL Issue Date: DEC. 2016

Scale: 1:200

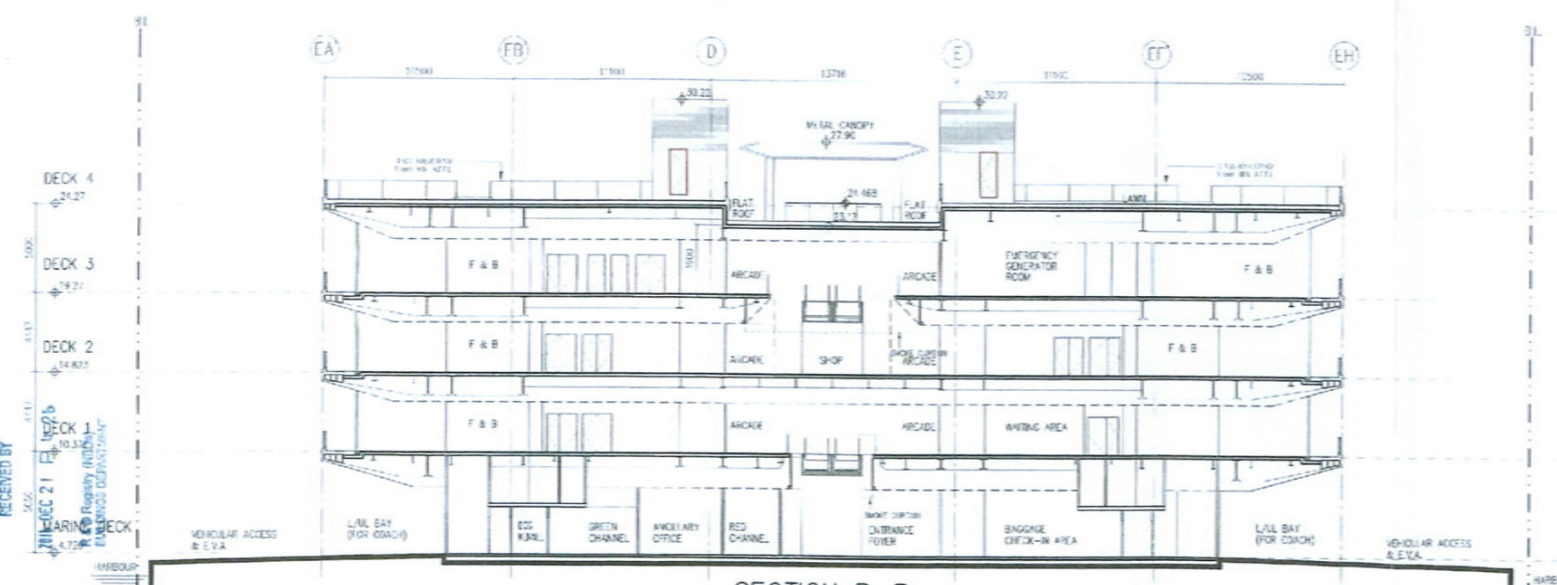
Sheet No: 206

Authorized Person's Signature: *Ronald Lu*
 LU Yuan Chung Ronald Authorized Person (Architect)

Placed and Approved: *Wong*
 Senior Building Surveyor For BUILDING AUTHORITY
 18 JAN 2017



ELEVATION 2



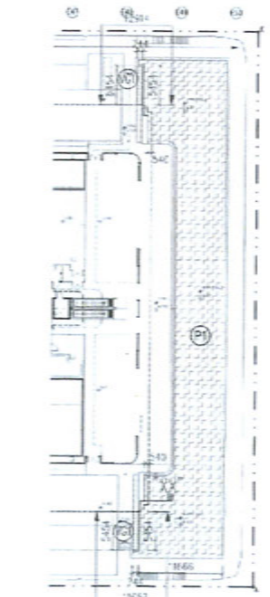
SECTION B-B

SITE COVERAGE OF GREENERY (UNDER PHAP AFF-152)
 NOTIONAL SITE AREA = 6032.9 s.m. (APPROX.)
 HEIGHT OF BUILDING = 21.27 (MAIN ROOF LEVEL OF EXTENSION PORTION) - 4.21 = 20.06M
 (LEVEL FORD = 4.21 mP.D.)

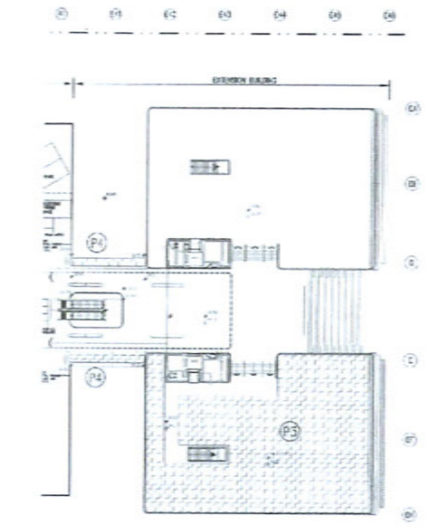
MINIMUM SITE COVERAGE OF GREENERY = 6032.9 x 20% = 1206.58 s.m

LEGEND:
 GREENED AREA
 VERTICAL GREENERY (V.G.)

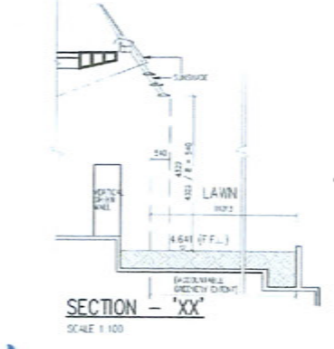
FLOOR	ACTUAL SITE COVERAGE OF GREENERY PROVIDED	REQ.
ELEVATION ZONE MARINE DECK	① = 589.916	1213.027 = 20.107% 6032.9 (i.e. COMPLIED WITH)
	② = 76.794	
	③ = 11,652(L) x 1.824(H) x 2 = 42,506	
ROOF	④ = 557.613	MAX. V.G. AREA 1213.027 X 0.3 = 363.908 ACTUAL V.G. AREA = 42,506
	⑤ = 22,990	



MARINE DECK FLOOR PLAN

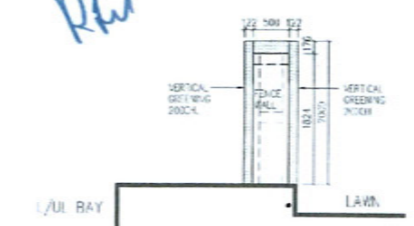


ROOF PLAN

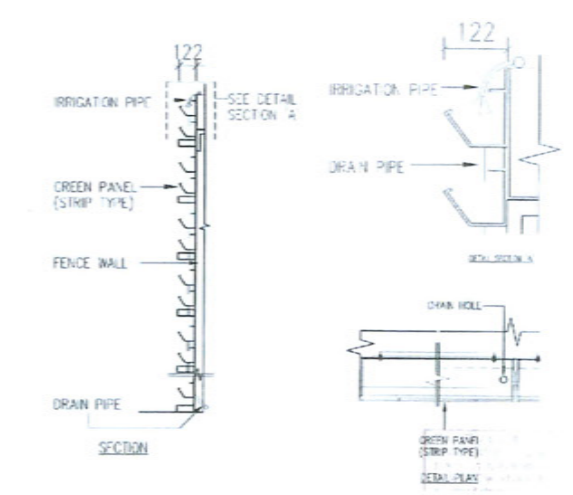


SECTION - XX
SCALE 1:100

Rlu



TYPICAL SECTION OF VERTICAL GREENING
SCALE 1:50



DETAILS OF PLANTING SYSTEM & DRAINAGE
N.T.S.

No.	Description	Drawn	Checked	Approved	Date	Level	Discipline	Drawn	Checked	Approved	Date
A	GENERAL REVISION	LHW	CCH	K	01/04/10	M	14TH SUBMISSION	LHW	CC/LOH	K	08/15
B	2ND SUBMISSION	LHW	CCH	K	05/07/10	N	15TH SUBMISSION	LHW	CC/LOH	K	10/15
C	4TH SUBMISSION	LHW	CCH	K	06/12	P	16TH SUBMISSION	LHW	CC/LOH	K	12/15
D	5TH SUBMISSION	LHW	CCH	K	09/13						
E	6TH SUBMISSION	LHW	CCH	K	12/13						
F	7TH SUBMISSION	LHW	CCH	K	03/14						
G	8TH SUBMISSION	LHW	CCH	K	08/14						
H	9TH SUBMISSION	LHW	CCH	K	02/15						
J	11TH SUBMISSION	LHW	CCH	K	03/15						
K	17TH SUBMISSION	LHW	CH	K	01/16						
L	13TH SUBMISSION	LHW	COH/CH	K	03/16						

RONALD LU & PARTNERS
 AN AFFILIATE OF JACOBS GROUP
 Ronald Lu & Partners (Hong Kong) Ltd.
 呂元祥建築師事務所(香港)有限公司
 33rd Floor, Wu Chung House,
 23 Queen's Road East,
 Wanchai, Hong Kong
 Tel: (852) 2991 2212
 Fax: (852) 2634 5442

Project Title
MARCO POLO H.K. HOTEL AND OCEAN TERMINAL / COMMERCIAL DEVELOPMENT FOR OCEAN TERMINAL EXTENSION CANTON ROAD, TSIM SHA TSUI, KOWLOON

Drawn By
ELEVATION, SECTION B-B, DIAGRAM & CALCULATION (S.B.D.)

Project No.
0805/TK
 Issue Date
DEC 2015
 Scale
AS SHOWN
 Drawing No.
208

Authorized Person's Signature
Roulu
 LU Yuen Cheung Ronald
 Authorized Person (Architect)

Submitted by / Client's Approval
 Plan Approved
Wing Hung
 Senior Building Surveyor
 For BUILDING AUTHORITY
 18 JAN 2017

Statement: The works shown on these plans are Type B Works (S.B.) as required in respect of which the Building Authority's consent is applied for.

Buildings Department **Amended plan**