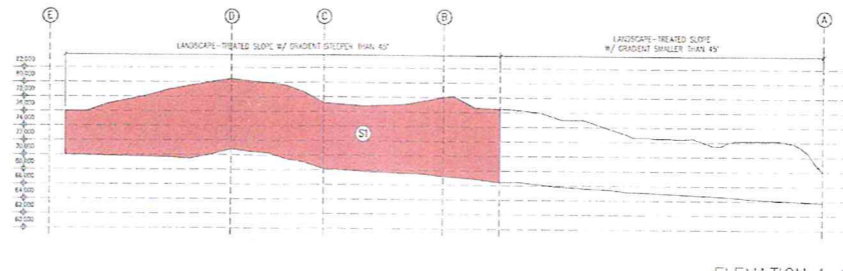
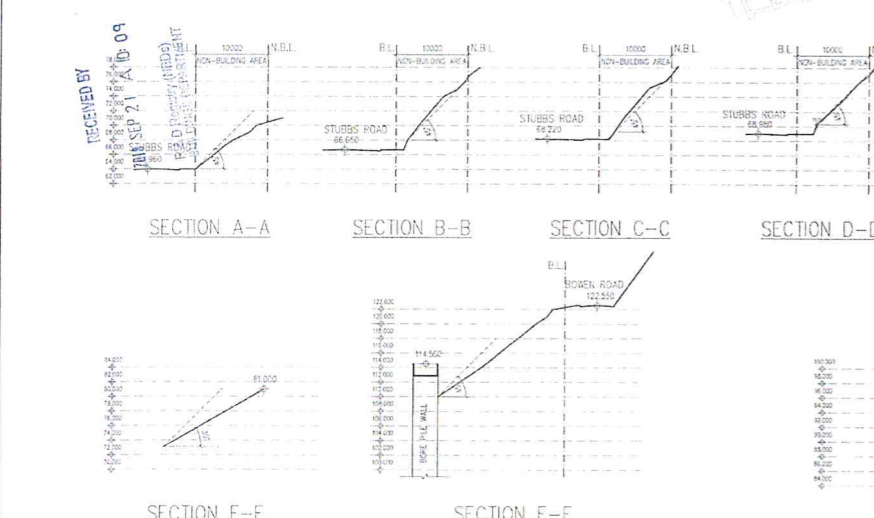
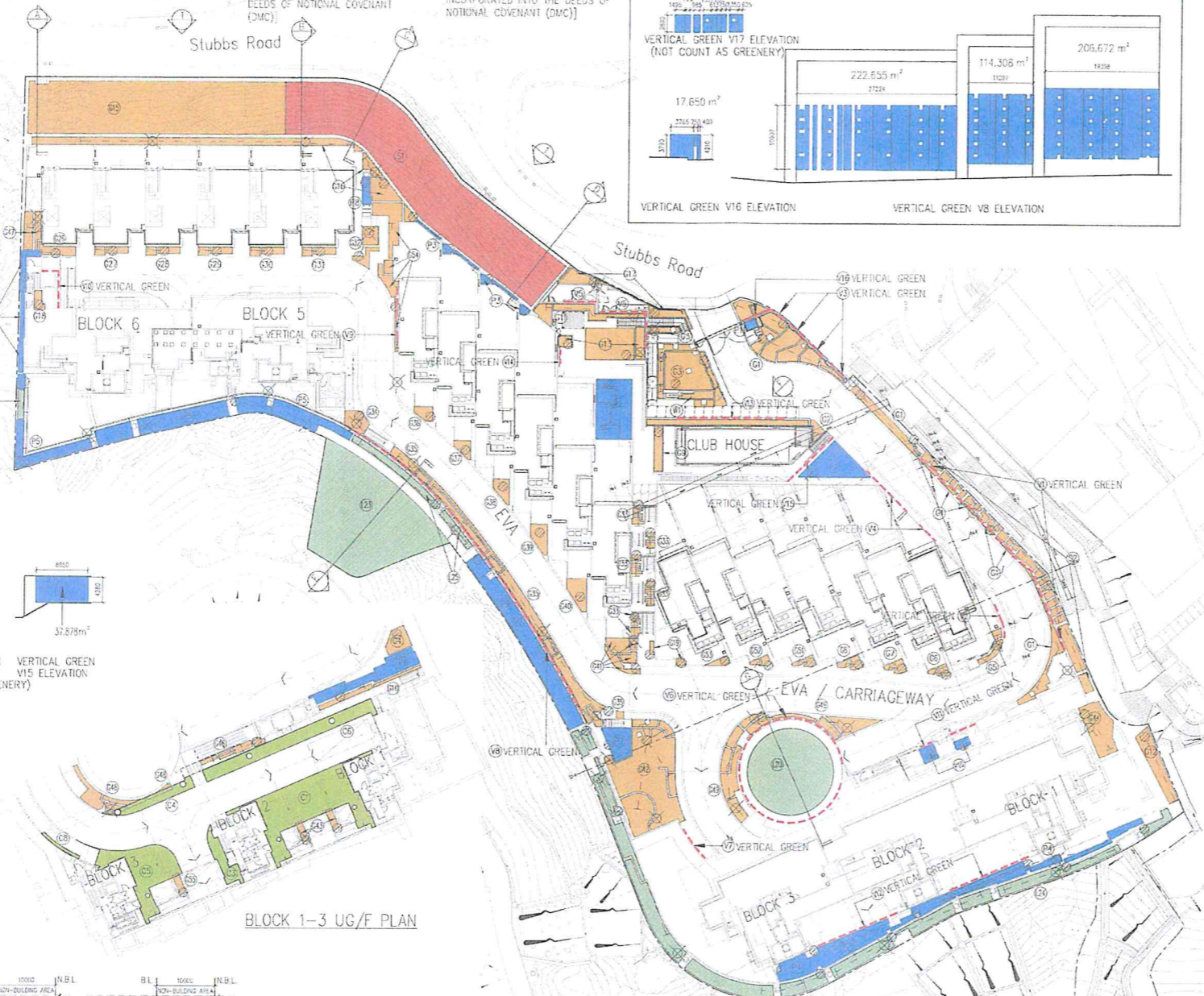
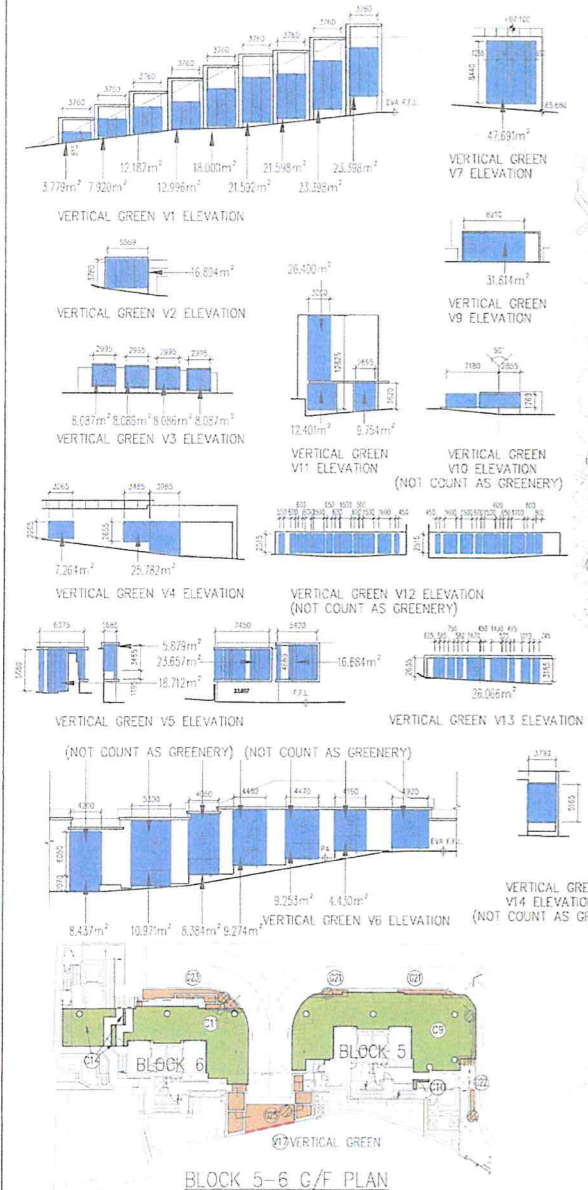


SITE COVERAGE OF GREENERY & COVERED LANDSCAPE

LEGEND:
 GREEN FEATURE
 OTHER GREENERY (DESIGNATED AS "COMMON AREAS" INCORPORATED INTO THE DEEDS OF NOTIONAL COVENANT (DMC))
 GREENERY AT PEDESTRIAN ZONE & GROUND LEVEL (S) (DESIGNATED AS "COMMON AREAS" INCORPORATED INTO THE DEEDS OF NOTIONAL COVENANT (DMC))
 GREENERY UNDER PLANNING BRIEF & LEASE
 VERTICAL GREENING
 COVERED LANDSCAPE



UNDER BUILDINGS ORDINANCE

GREENEY AREA AT PEDESTRIAN ZONE (EASILY ACCESSIBLE TO PEDESTRIANS AT STREET LEVEL AND AT LEVEL ABOVE STREET IF SUCH LEVEL DIRECTLY FROM STREET)	GREENEY AREA AT OTHER LOCATION	COVERED LANDSCAPED AREAS
GREENEY AREA: (S1) = 109.60m ² , (S2) = 4.387m ² , (S3) = 70.671m ² , (S4) = 13.537m ² , (S5) = 7.233m ² , (S6) = 3.938m ² , (S7) = 5.211m ² , (S8) = 5.476m ² , (S9) = 35.638m ² , (S10) = 11.826m ² , (S11) = 22.305m ² , (S12) = 28.155m ² , (S13) = 55.896m ² , (S14) = 392.553m ² , (S15) = 88.055m ² , (S16) = 19.513m ² , (S17) = 4.924m ² , (S18) = 3.317m ² , (S19) = 8.569m ² , (S20) = 5.434m ² , (S21) = 17.740m ² , (S22) = 42.261m ² , (S23) = 5.476m ² , (S24) = 11.826m ² , (S25) = 7.162m ² , (S26) = 35.638m ² , (S27) = 11.826m ² , (S28) = 22.305m ² , (S29) = 28.155m ² , (S30) = 7.162m ² , (S31) = 55.896m ² , (S32) = 392.553m ² , (S33) = 14.423m ² , (S34) = 18.924m ² , (S35) = 68.243m ² , (S36) = 12.121m ² , (S37) = 89.443m ² , (S38) = 6.324m ² , (S39) = 8.446m ² , (S40) = 11.531m ² , (S41) = 22.830m ² , (S42) = 159.290m ² , (S43) = 7.162m ² , (S44) = 8.012m ² , (S45) = 35.848m ² , (S46) = 10.222m ² , (S47) = 15.633m ² , (S48) = 25.850m ² , (S49) = 58.044m ² , (S50) = 4.209m ² , (S51) = 3.625m ² , (S52) = 3.492m ² , (S53) = 36.729m ² , (S54) = 4.006m ² , (S55) = 16.994m ² , (S56) = 23.346m ² , (S57) = 33.046m ² , (S58) = 64.939m ² , (S59) = 50.749m ² , (S60) = 48.555m ² , (S61) = 48.555m ² , (S62) = 8.012m ² , (S63) = 20.066m ² , (S64) = N/A, (S65) = N/A, (S66) = 224.805m ² , (S67) = 29.685m ² , (S68) = 5.164m ² , (S69) = 173.198m ² , (S70) = 322.825m ² , (S71) = 37.034m ² , (S72) = 52.993m ² , (S73) = 8.343m ² , (S74) = 94.433m ² , (S75) = 136.306m ² , (S76) = 32.535m ² , (S77) = 19.973m ² , (S78) = 5.046m ² , (S79) = 83.363m ² , (S80) = 9.319m ² , (S81) = 2.491m ²	GREENING FEATURES: (L) = 173.198m ² , (M) = 322.825m ² , (N) = 139.362m ² , (O) = 1463m ² , (P) = 19.726m ² , (Q) = 24.334m ² , (R) = 76.000m ² , (S) = 66.687m ² , (T) = 4.126m ² , (U) = 136.599m ² , (V) = 196.500m ² , (W) = 224.805m ² , (X) = 29.685m ² , (Y) = 5.164m ² , (Z) = 32.928m ²	SUB-TOTAL = 2194.167m ² IRRIGATION POINT = 0.2 X 0.2 X 31NOS. = -1.240m ² LANTERN LIGHT AT PLANTER = 0.3 X 0.3 X 11NOS. = -0.990m ² TOTAL = 2191.937m ²

UNDER APP-152 : SBDG

SITE COVERAGE OF GREENERY AT PEDESTRIAN ZONE
 SITE AREA: 14700
 2191.937 x 100% = 14.911% (PROPOSED) > 10% (REQUIRED) i.e. OK

UNDER APP-42 : AMENITY FEATURES

% OF COVERED LANDSCAPED AREAS OF THE TOTAL DOMESTIC GFA
 COVERED LANDSCAPED AREAS: 2191.937
 TOTAL DOMESTIC GFA: 16779.804
 2191.937 / 16779.804 x 100% = 13.11% (PROPOSED) < 5% (REQUIRED) i.e. OK

TOTAL SITE COVERAGE OF GREENERY
 GREENEY AREA AT PEDESTRIAN ZONE + GREENEY AT OTHER LOCATION: 2191.937 + 755.717 = 2947.654
 2947.654 / 14700 x 100% = 20.052% (PROPOSED) > 20% (REQUIRED) i.e. OK

GREENING FEATURE: (S1) + (S2) + (S3) + (S4) + (S5) + (S6)
 511.302 + 290.854 + 2.889 = 805.045
 805.045 / 14700 x 100% = 5.476% (PROPOSED) < 30% (CAP) i.e. OK

UNDER TOWN PLANNING ORDINANCE & LEASE (NOT FOR B.D. APPROVAL)

GREENEY AREA AT GROUND LEVEL (VISIBLE TO PEDESTRIANS / ACCESSIBLE BY ANY PERSON OR PERSONS ENTERING THE LOT)	GREENEY AREA AT OTHER LOCATION	GREENEY UNDER PLANNING & LEASE
GREENEY AREA: (S1) = 109.60m ² , (S2) = 4.387m ² , (S3) = 70.671m ² , (S4) = 13.537m ² , (S5) = 7.233m ² , (S6) = 3.938m ² , (S7) = 5.211m ² , (S8) = 5.476m ² , (S9) = 35.638m ² , (S10) = 11.826m ² , (S11) = 22.305m ² , (S12) = 28.155m ² , (S13) = 55.896m ² , (S14) = 392.553m ² , (S15) = 88.055m ² , (S16) = 19.513m ² , (S17) = 4.924m ² , (S18) = 3.317m ² , (S19) = 8.569m ² , (S20) = 5.434m ² , (S21) = 17.740m ² , (S22) = 42.261m ² , (S23) = 5.476m ² , (S24) = 11.826m ² , (S25) = 7.162m ² , (S26) = 35.638m ² , (S27) = 11.826m ² , (S28) = 22.305m ² , (S29) = 28.155m ² , (S30) = 7.162m ² , (S31) = 55.896m ² , (S32) = 392.553m ² , (S33) = 14.423m ² , (S34) = 18.924m ² , (S35) = 68.243m ² , (S36) = 12.121m ² , (S37) = 89.443m ² , (S38) = 6.324m ² , (S39) = 8.446m ² , (S40) = 11.531m ² , (S41) = 22.830m ² , (S42) = 159.290m ² , (S43) = 7.162m ² , (S44) = 8.012m ² , (S45) = 35.848m ² , (S46) = 10.222m ² , (S47) = 15.633m ² , (S48) = 25.850m ² , (S49) = 58.044m ² , (S50) = 4.209m ² , (S51) = 3.625m ² , (S52) = 3.492m ² , (S53) = 36.729m ² , (S54) = 4.006m ² , (S55) = 16.994m ² , (S56) = 23.346m ² , (S57) = 33.046m ² , (S58) = 64.939m ² , (S59) = 50.749m ² , (S60) = 48.555m ² , (S61) = 48.555m ² , (S62) = 8.012m ² , (S63) = 20.066m ² , (S64) = N/A, (S65) = N/A, (S66) = 224.805m ² , (S67) = 29.685m ² , (S68) = 5.164m ² , (S69) = 173.198m ² , (S70) = 322.825m ² , (S71) = 37.034m ² , (S72) = 52.993m ² , (S73) = 8.343m ² , (S74) = 94.433m ² , (S75) = 136.306m ² , (S76) = 32.535m ² , (S77) = 19.973m ² , (S78) = 5.046m ² , (S79) = 83.363m ² , (S80) = 9.319m ² , (S81) = 2.491m ²	GREENING FEATURES: (L) = 173.198m ² , (M) = 322.825m ² , (N) = 139.362m ² , (O) = 1463m ² , (P) = 19.726m ² , (Q) = 24.334m ² , (R) = 76.000m ² , (S) = 66.687m ² , (T) = 4.126m ² , (U) = 136.599m ² , (V) = 196.500m ² , (W) = 224.805m ² , (X) = 29.685m ² , (Y) = 5.164m ² , (Z) = 32.928m ²	SUB-TOTAL OF V.G. = 1096.124m ² IRRIGATION POINT = 0.2 X 0.2 X 31NOS. = -1.240m ² LANTERN LIGHT AT PLANTER = 0.3 X 0.3 X 11NOS. = -0.990m ² TOTAL = 1093.894m ²

UNDER PLANNING BRIEF

SITE COVERAGE OF GREENERY AT GROUND LEVEL
 GREENEY AREA AT GROUND LEVEL: 15977
 PLANNING APPLICATION SITE AREA: 3285.072
 15977 / 3285.072 x 100% = 4861.633% (PROPOSED) > 20% (REQUIRED UNDER PLANNING BRIEF) i.e. OK

UNDER LEASE

GREENEY AREA VISIBLE TO PEDESTRIANS / ACCESSIBLE BY ANY PERSON OR PERSONS ENTERING THE LOT
 GREENEY AREA AT GROUND LEVEL + GREENEY AT OTHER LOCATION + GREENEY UNDER PLANNING BRIEF / LEASE: 3285.072 + 755.717 + 481.633 = 4522.422
 4522.422 / 14700 x 100% = 30.763% (PROPOSED) > 30% (REQUIRED UNDER LEASE CLAUSE 13(a)) i.e. OK

Rev	Description	Drawn	Checked	Approved	Date	Rev	Description	Drawn	Checked	Approved	Date
1	1ST SUBMISSION	AKW/ML	AKW	AKW	22 / 07 / 15	1	9TH AMENDMENT	AKW/ML	AKW	AKW	23 / 07 / 15
2	2ND SUBMISSION	AKW/ML	AKW	AKW	02 / 02 / 16	2	10TH AMENDMENT	AKW/ML	AKW	AKW	23 / 07 / 15
3	3RD SUBMISSION	AKW/ML	AKW	AKW	22 / 07 / 15	3	11TH AMENDMENT	AKW/ML	AKW	AKW	06 / 08 / 16
4	4TH SUBMISSION	AKW/ML	AKW	AKW	22 / 08 / 16	4	12TH AMENDMENT	AKW/ML	AKW	AKW	31 / 08 / 16
5	5TH SUBMISSION	AKW/ML	AKW	AKW	11 / 11 / 16	5	13TH AMENDMENT	AKW/ML	AKW	AKW	20 / 01 / 16
6	6TH SUBMISSION	AKW/ML	AKW	AKW	13 / 10 / 16	6	14TH AMENDMENT	AKW/ML	AKW	AKW	21 / 01 / 16
7	7TH SUBMISSION	AKW/ML	AKW	AKW	22 / 02 / 16	7	15TH AMENDMENT	AKW/ML	AKW	AKW	22 / 02 / 16
8	8TH SUBMISSION	AKW/ML	AKW	AKW	22 / 02 / 16	8	16TH AMENDMENT	AKW/ML	AKW	AKW	22 / 02 / 16
9	9TH SUBMISSION	AKW/ML	AKW	AKW	22 / 02 / 16	9	17TH AMENDMENT	AKW/ML	AKW	AKW	22 / 02 / 16
10	10TH SUBMISSION	AKW/ML	AKW	AKW	22 / 02 / 16	10	18TH AMENDMENT	AKW/ML	AKW	AKW	22 / 02 / 16

RONALD LU & PARTNERS
 ARCHITECTS | PLANNERS | INTERIOR DESIGNERS
 Ronald Lu & Partners (Hong Kong) Ltd.
 呂元祥建築師事務所(香港)有限公司
 33rd Floor, Wu Chung House,
 213 Queen's Road East,
 Wanchai, Hong Kong
 Tel: (852) 2891 2212
 Fax: (852) 2834 5442

Project Title: **COMPREHENSIVE RESIDENTIAL DEVELOPMENT AT NO. 18 STUBBS ROAD, INLAND LOT NO. 8963, WANCHAI, H.K.**

Drawing Title: **SBD CALCULATION (3)**

Project No: 11051HK
 Issue Date: JULY 2012
 Cod File No: U:_STUDIO_5\...SBD(3)_Amendment1
 SCALE: 1 : 500
 Drawing No: A/11051/GBP-79

Authorised Person's Signature: **LEUNG HO-MAN, Andy**
 Authorised Person (Architect)

Authorised Person's Signature: **MA HO-WAI**
 Senior Building Surveyor for BUILDING AUTHORITY
 24 SEP 2016

Buildings Department **Amended Plan**