

SITE COVERAGE OF GREENERY

SITE AREA = 2085.116 M²

MINIMUM SITE COVERAGE OF GREENERY : PRIMARY ZONE = 10%

TOTAL GREENERY AREA = 20%

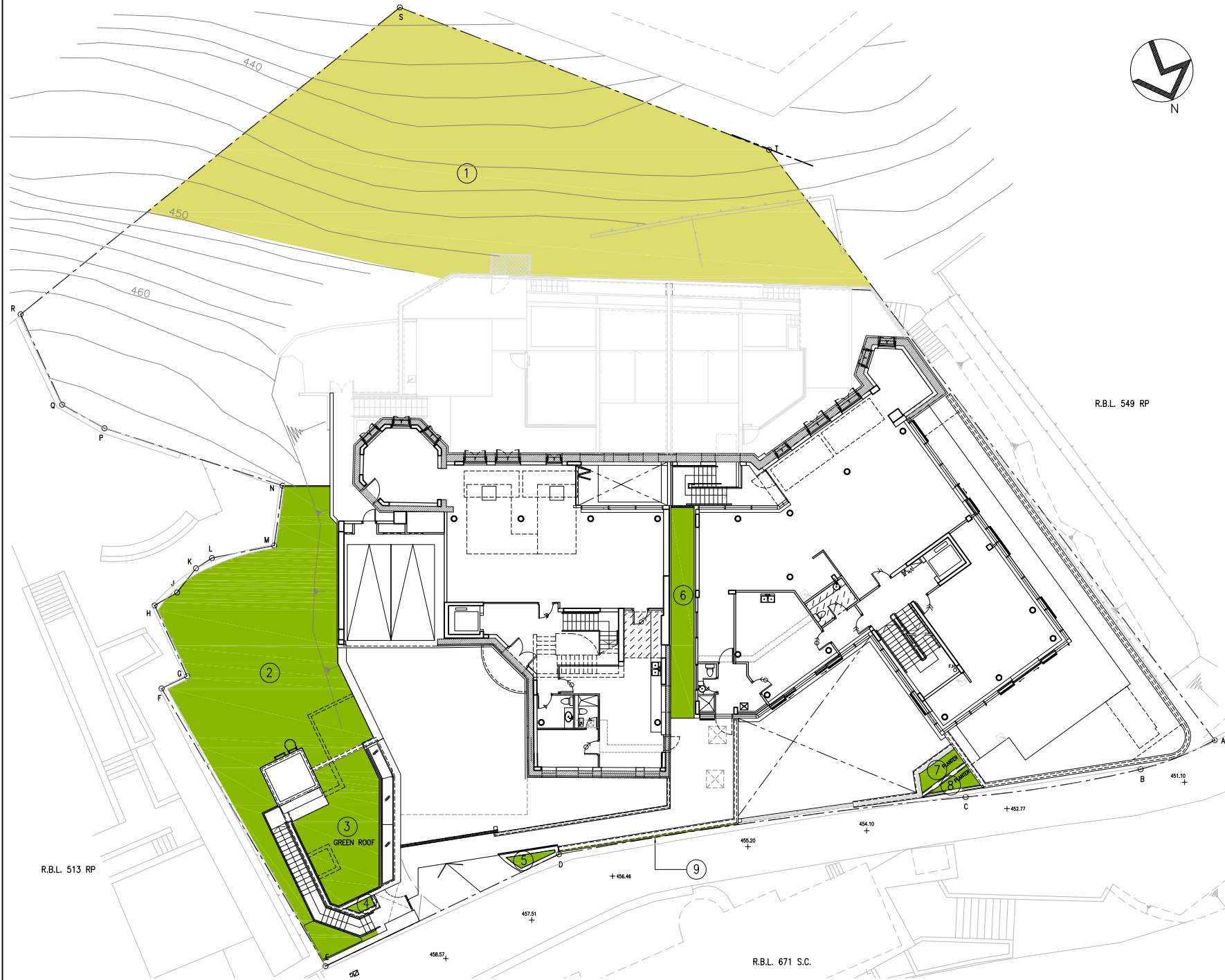


DIAGRAM SHOWING SITE COVERAGE OF GREENERY

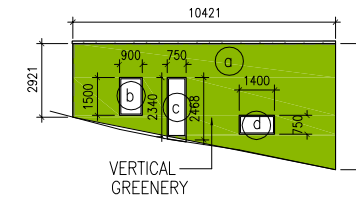
LEGEND

- PRIMARY GREEN
- NON PRIMARY GREEN
- SITE BOUNDARY

SCHEDULE OF GREENERY AREA PROVIDED IN THE SITE

- | | |
|--------------------------|-------------------------|
| ① 373.418 M ² | ⑦ 2.603 M ² |
| ② 140.014 M ² | ⑧ 1.801 M ² |
| ③ 29.714 M ² | ⑨ 37.085 M ² |
| ④ 0.743 M ² | |
| ⑤ 1.231 M ² | |
| ⑥ 16.000 M ² | |

⑨ VERTICAL GREENERY AREA CALCULATION :



$$\begin{aligned} \text{(a)} & [(2.921 + 5.003) \times 10.421] / 2 = 41.288 \text{ M}^2 \\ \text{(b)} & (0.900 \times 1.500) = 1.350 \text{ M}^2 \\ \text{(c)} & [(2.340 + 2.468) \times 0.750] / 2 = 1.803 \text{ M}^2 \\ \text{(d)} & (1.400 \times 0.750) = 1.050 \text{ M}^2 \\ \text{(a) - (b) - (c) - (d)} & = 37.085 \text{ M}^2 \end{aligned}$$

$$\begin{aligned} \text{PERCENTAGE OF TOTAL VERTICAL GREEN AREA} & = 37.085 / (2085.116 \times 20\%) \times 100\% \\ & = 8.893\% (<30\% \text{ OF TOTAL REQUIRED GREENERY}) \end{aligned}$$

GREENERY AREA PROVIDED AT PRIMARY ZONE:

$$\begin{aligned} & = \text{②} + \text{③} + \text{④} + \text{⑤} + \text{⑥} + \text{⑦} + \text{⑧} + \text{⑨} \\ & = 229.191 \text{ M}^2 \\ & = 10.992\% \\ & (>10\%, \text{ MINIMUM SITE COVERAGE AT PEDESTRIAN ZONE COMPLIED}) \end{aligned}$$

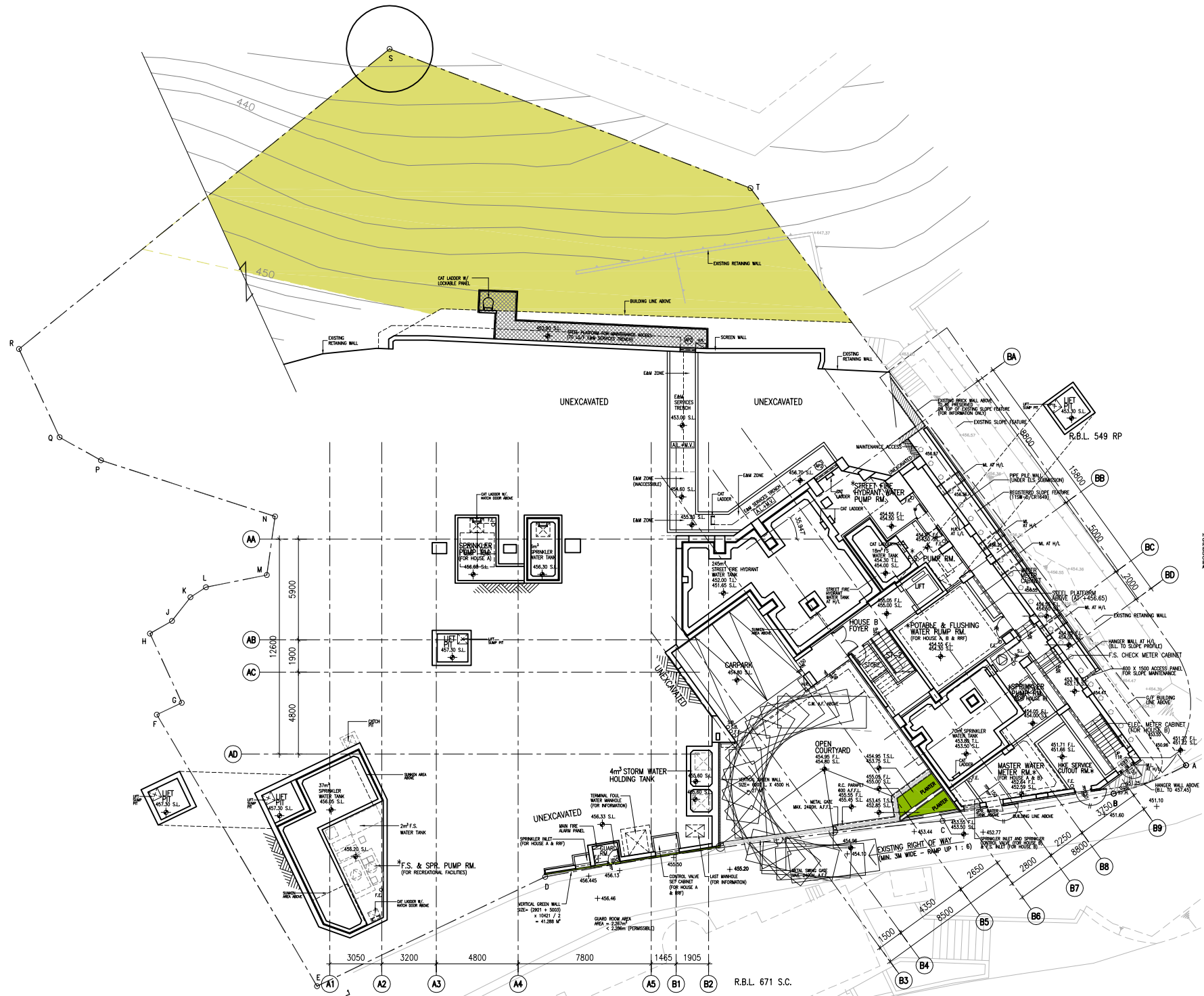
TOTAL GREENERY AREA PROVIDED:

$$\begin{aligned} & = \text{①} + \text{②} + \text{③} + \text{④} + \text{⑤} + \text{⑥} + \text{⑦} + \text{⑧} + \text{⑨} \\ & = 602.609 \text{ M}^2 \\ & = 28.901\% \\ & (>20\%, \text{ MINIMUM SITE COVERAGE COMPLIED}) \end{aligned}$$

NO.	DATE	AMENDMENT
P&T Architects and Engineers Ltd		
<small>HONG KONG: P&T ARCHITECTS AND ENGINEERS LTD / PALMER & TURNER INTERNATIONAL INC. 33/F, 633 KING'S ROAD, NORTH POINT, HONG KONG SINGAPORE: P&T CONSULTANTS PTE LTD. 2300 CLIFFORD CENTRE, 24 RAFFLES PLACE, SINGAPORE 048621 THAILAND: PALMER & TURNER (THAILAND) LTD. 100/100, ORIENTAL PLAZA, NO.1 EAST CHANG AN AVE., BANGKOK 10330, THAILAND SHANGHAI: PALMER & TURNER CONSULTANTS (SHANGHAI) LTD. TOWER B, CITY CENTRE OF SHANGHAI, NO.100 ZUN 11 ROAD, SHANGHAI, CHINA POST CODE 200051 BEIJING: PALMER & TURNER CONSULTANTS (SHANGHAI) LTD. BEIJING BRANCH TOWER W2/100B, ORIENTAL PLAZA, NO.1 EAST CHANG AN AVE., DONG CHENG DISTRICT, BEIJING, CHINA POST CODE 100738 MACAU: P&T ARCHITECTS & ENGINEERS LTD. MACAU BRANCH P&T DA PRIMA GRANDE CENTRO COMERCIAL DA PRIMA GRANDE 20 ANDARA/MACAU MALAYSIA: P&T S&N SDN BHD 63 (LOWER GROUND FLOOR) CANTAK BUKIT BERING, 50000 KUALA LUMPUR, MALAYSIA INDONESIA: P&T INDONESIA P.T. BOX 3139/ART, JAKARTA, INDONESIA TAINAN: P&T TAINAN LTD. 6TH FLOOR, 170 TUN HWA NORTH ROAD, TAINAN R.O.C.</small>		
TEL: 852-2575 6575	TEL: 65-6535 2011	TEL: 66-2-451 9180
FAX: 852-2891 3834	FAX: 65-6535 1283	FAX: 66-2-451 9170
TEL: 8621-6337808	TEL: 8610-85181014	TEL: 863-503241
FAX: 8621-6337220	FAX: 8610-85181035	FAX: 863-503244
TEL: 8621-6337208	TEL: 8610-85181014	TEL: 60-3-2142 6253
FAX: 8621-6337220	FAX: 8610-85181035	FAX: 60-3-2142 2188
TEL: 8621-6337208	TEL: 8610-85181014	TEL: 866-2-8712 8689
FAX: 8621-6337220	FAX: 8610-85181035	FAX: 866-2-8712 3460

PROJECT	
RESIDENTIAL DEVELOPMENT AT RBL NO. 540 (R.P.) 8 & 8A POLLOCK'S PATH, THE PEAK, HONG KONG	
DRAWING	
SITE COVERAGE OF GREENERY	
SCALE 1:300	NUMBER 4618
DATE 04/2020	SC_G_00
DRAWN	
CHECKED	APPROVED

• ALL DIMENSIONS ARE IN MILLIMETER EXCEPT OTHERWISE NOTED
 • DO NOT SCALE DRAWING
 • ALL MEASUREMENTS SHOULD BE VERIFIED ON SITE
 THE OWNERSHIP OF THE COPYRIGHT IN THIS DRAWING IS RETAINED BY P&T ARCHITECTS AND ENGINEERS LTD WHOSE CONSENT MUST BE OBTAINED BEFORE ANY USE OR REPRODUCTION OF THE DRAWING OR ANY PART THEREOF CAN BE MADE.



LEGEND

- PRIMARY GREEN
- NON PRIMARY GREEN
- SITE BOUNDARY

NO. DATE AMENDMENT

P&T Architects and Engineers Ltd

HONG KONG: P&T ARCHITECTS AND ENGINEERS LTD / PALMER & TURNER INTERNATIONAL INC. TEL: 852-2575 6575
 33/F, 653 KING'S ROAD, NORTH POINT, HONG KONG. FAX: 852-2891 3834

SINGAPORE: P&T CONSULTANTS PTE LTD. TEL: 65-6535 2011
 2300 CLIFFORD CENTRE, 24 RAFFLES PLACE, SINGAPORE 048621. FAX: 65-6535 1283

THAILAND: PALMER & TURNER (THAILAND) LTD. TEL: 66-2-451 9180
 SINGAPOUR CABLE BUILDING II, 5/F 231-9 303 SARASIN, RAJDAHRI ROAD, BANGKOK 10330, THAILAND. FAX: 66-2-451 9170

SHANGHAI: PALMER & TURNER CONSULTANTS (SHANGHAI) LTD. TEL: 8621-63372808
 RM 1508, TOWER B, CITY CENTRE OF SHANGHAI, NO.100 ZUN 11 ROAD, SHANGHAI, CHINA POST CODE 200051. FAX: 8621-63372220

BEIJING: PALMER & TURNER CONSULTANTS (SHANGHAI) LTD. BEIJING BRANCH TEL: 8610-85181014
 TOWER W2/100B, ORIENTAL PLAZA, NO.1 EAST CHANG AN AVE., DONG CHENG DISTRICT, BEIJING, CHINA POST CODE 100738. FAX: 8610-85181035

MACAU: P&T ARCHITECTS & ENGINEERS LTD. MACAU BRANCH TEL: 853-500241
 RUA DA PRAIA GRANDE CENTRO COMERCIAL DA PRAIA GRANDE 20 ANDARIMACAU. FAX: 853-314214

MALAYSIA: PTCM SON BHD TEL: 60-3-2142 6253
 63 (LOWER GROUND FLOOR) CANGKAT BUKIT BINTANG, 50000 KUALA LUMPUR, MALAYSIA. FAX: 60-3-2142 2188

INDONESIA: P&T INDONESIA TEL: 866-2-8712 8669
 P.O. BOX 3139/ART, JAKARTA, INDONESIA. FAX: 866-2-8712 3460

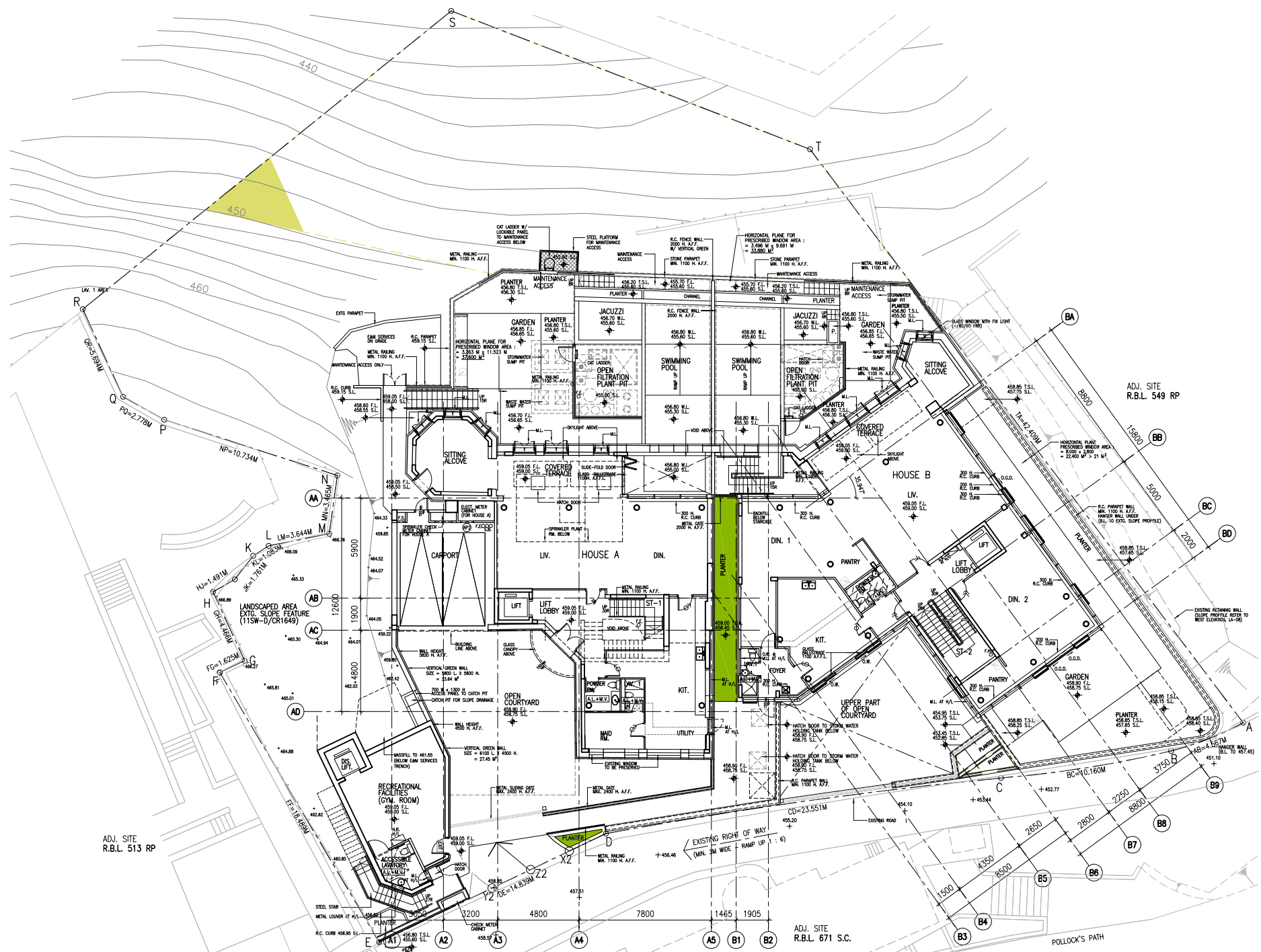
TAINAN: P&T TAINAN LTD TEL: 866-2-8712 8669
 6TH FLOOR, 170 TUN HWA NORTH ROAD, TAINAN R.O.C. FAX: 866-2-8712 3460

PROJECT
**RESIDENTIAL DEVELOPMENT
 AT RBL NO. 540 (R.P.)
 8 & 8A POLLOCK'S PATH,
 THE PEAK, HONG KONG**

DRAWING
**SITE COVERAGE OF GREENERY
 GROUND FLOOR PLAN**

SCALE	1:300	NUMBER	4618
DATE	08/2020	DRAWN	SC_G_01
CHECKED			
		APPROVED	

* ALL DIMENSIONS ARE IN MILLIMETER EXCEPT OTHERWISE NOTED
 * DO NOT SCALE DRAWING
 * ALL MEASUREMENTS SHOULD BE VERIFIED ON SITE
 THE OWNERSHIP OF THE COPYRIGHT IN THIS DRAWING IS RETAINED BY P&T ARCHITECTS AND ENGINEERS LTD WHOSE CONSENT MUST BE OBTAINED BEFORE ANY USE OR REPRODUCTION OF THE DRAWING OR ANY PART THEREOF CAN BE MADE.



- LEGEND**
- PRIMARY GREEN
 - NON PRIMARY GREEN
 - SITE BOUNDARY

NO.	DATE	AMENDMENT
P&T Architects and Engineers Ltd		
<small>HONG KONG: P&T ARCHITECTS AND ENGINEERS LTD / PALMER & TURNER INTERNATIONAL INC. 33/F, 633 KING'S ROAD, NORTH POINT, HONG KONG SINGAPORE: P&T CONSULTANTS PTE LTD, 2300 CLIFFORD CENTRE, 24 RAFFLES PLACE, SINGAPORE 048621 THAILAND: PALMER & TURNER (THAILAND) LTD, 1008 TOWER B, CITY CENTRE OF SHANGHAI, NO.100 ZUN YI ROAD, SHANGHAI, CHINA POST CODE 200051 BEIJING: PALMER & TURNER CONSULTANTS (SHANGHAI) LTD, TOWER W2/1008, ORIENTAL PLAZA, NO.1 EAST CHANG AN AVE., DONG CHENG DISTRICT, BEIJING, CHINA POST CODE 100738 MACAU: P&T ARCHITECTS & ENGINEERS LTD, MACAU BRANCH, P&T DA PRIMA GRANDE CENTRO COMERCIAL DA PRIMA GRANDE 20 ANGRAMACAU MALAYSIA: P&T SON BHD, 63 (LOWER GROUND FLOOR) CANGKAT BUKIT BINTANG, 50000 KUALA LUMPUR, MALAYSIA INDONESIA: P&T INDONESIA, P.O. BOX 3139/ART, JAKARTA, INDONESIA TAINAN: P&T TAINAN LTD, 6TH FLOOR, 170 TUN HWA NORTH ROAD, TAINAN R.O.C.</small>		
TEL: 852-2575 6575	FAX: 852-2891 3834	
TEL: 65-6535 2011	FAX: 65-6535 1283	
TEL: 66-2-451 9180	FAX: 66-2-451 9170	
TEL: 8621-63372808	FAX: 8621-63372220	
TEL: 8610-85181014	FAX: 8610-85181035	
TEL: 853-550341	FAX: 853-314214	
TEL: 60-3-2142 6253	FAX: 60-3-2142 2188	
TEL: 896-2-8712 8669	FAX: 896-2-8712 3460	

PROJECT	
RESIDENTIAL DEVELOPMENT AT RBL NO. 540 (R.P.) 8 & 8A POLLOCK'S PATH, THE PEAK, HONG KONG	
DRAWING	
SITE COVERAGE OF GREENERY GROUND FLOOR PLAN	
SCALE 1:300	NUMBER 4618
DATE 08/2020	SC_G_02
DRAWN	
CHECKED	APPROVED

* ALL DIMENSIONS ARE IN MILLIMETER EXCEPT OTHERWISE NOTED
 * DO NOT SCALE DRAWING
 * ALL MEASUREMENTS SHOULD BE VERIFIED ON SITE
 THE OWNERSHIP OF THE COPYRIGHT IN THIS DRAWING IS RETAINED BY P&T ARCHITECTS AND ENGINEERS LTD WHOSE CONSENT MUST BE OBTAINED BEFORE ANY USE OR REPRODUCTION OF THE DRAWING OR ANY PART THEREOF CAN BE MADE.



LEGEND

- PRIMARY GREEN
- NON PRIMARY GREEN
- SITE BOUNDARY

NO. DATE AMENDMENT

P&T Architects and Engineers Ltd

HONG KONG: PAT ARCHITECTS AND ENGINEERS LTD / PALMER & TURNER INTERNATIONAL INC. TEL: 852-2575 6575
33/F, 633 KING'S ROAD, NORTH POINT, HONG KONG. FAX: 852-2891 3834

SINGAPORE: PAT CONSULTANTS PTE LTD. TEL: 65-6535 2011
2300 CLIFFORD CENTRE, 24 RAFFLES PLACE, SINGAPORE 048621. FAX: 65-6535 1283

THAILAND: PALMER & TURNER (THAILAND) LTD. TEL: 66-2-451 9180
SINGAPORE CABLE BUILDING II, 3/F 231-9 303 SARASIN, RAJDAHRI ROAD, BANGKOK 10330, THAILAND. FAX: 66-2-451 9170

SHANGHAI: PALMER & TURNER CONSULTANTS (SHANGHAI) LTD. TEL: 8621-63372808
RM 1508, TOWER B, CITY CENTRE OF SHANGHAI, NO.100 ZUN 11 ROAD, SHANGHAI, CHINA POST CODE 200051. FAX: 8621-63372220

BEIJING: PALMER & TURNER CONSULTANTS (SHANGHAI) LTD. BEIJING BRANCH TEL: 8610-85181014
TOWER W2/1008, ORIENTAL PLAZA, NO.1 EAST CHANG AN AVE., LONG CHENG DISTRICT, BEIJING, CHINA POST CODE 100738. FAX: 8610-85181035

MACAU: PAT ARCHITECTS & ENGINEERS LTD. MACAU BRANCH TEL: 853-500241
RUA DA PRAIA GRANDE CENTRO COMERCIAL DA PRAIA GRANDE 20 ANDARA/MACAU. FAX: 853-314214

MALAYSIA: PTCM SION BHD TEL: 60-3-2142 6253
63 (LOWER GROUND FLOOR) CANGKAT BUKIT BINTANG 50000 KUALA LUMPUR/MALAYSIA. FAX: 60-3-2142 2188

INDONESIA: P&T INDONESIA TEL: 856-2-8712 8669
P.O. BOX 3139/ART, JAKARTA, INDONESIA. FAX: 856-2-8712 3460

TAINAN: PAT TAINAN LTD TEL: 886-2-8712 8669
6TH FLOOR, 170 TUN HAN NORTH ROAD, TAINAN R.O.C. FAX: 886-2-8712 3460

PROJECT	
RESIDENTIAL DEVELOPMENT AT RBL NO. 540 (R.P.) 8 & 8A POLLOCK'S PATH, THE PEAK, HONG KONG	
DRAWING	
SITE COVERAGE OF GREENERY FIRST FLOOR PLAN	
SCALE 1:300	NUMBER 4618
DATE 08/2020	SC_G_03
DRAWN	
CHECKED	APPROVED

* ALL DIMENSIONS ARE IN MILLIMETER EXCEPT OTHERWISE NOTED
* DO NOT SCALE DRAWING
* ALL MEASUREMENTS SHOULD BE VERIFIED ON SITE
THE OWNERSHIP OF THE COPYRIGHT IN THIS DRAWING IS RETAINED BY PAT ARCHITECTS AND ENGINEERS LTD WHOSE CONSENT MUST BE OBTAINED BEFORE ANY USE OR REPRODUCTION OF THE DRAWING OR ANY PART THEREOF CAN BE MADE.