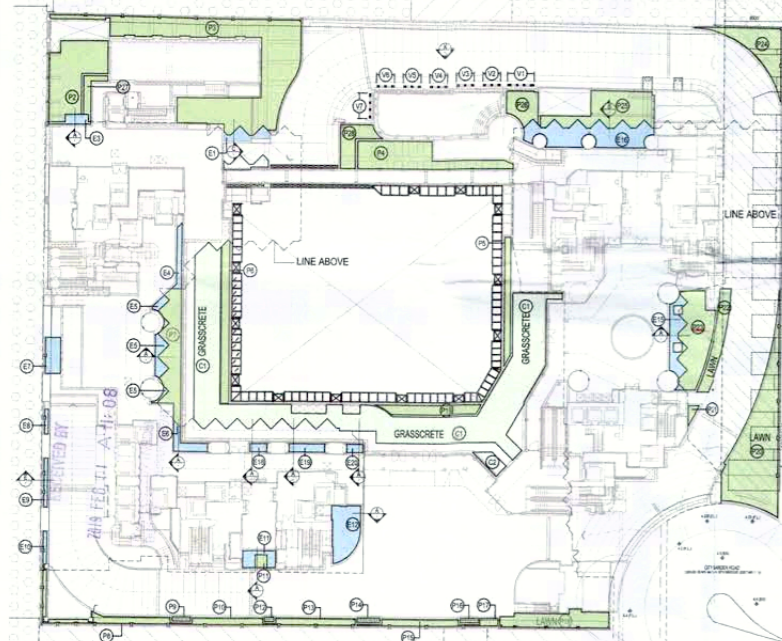


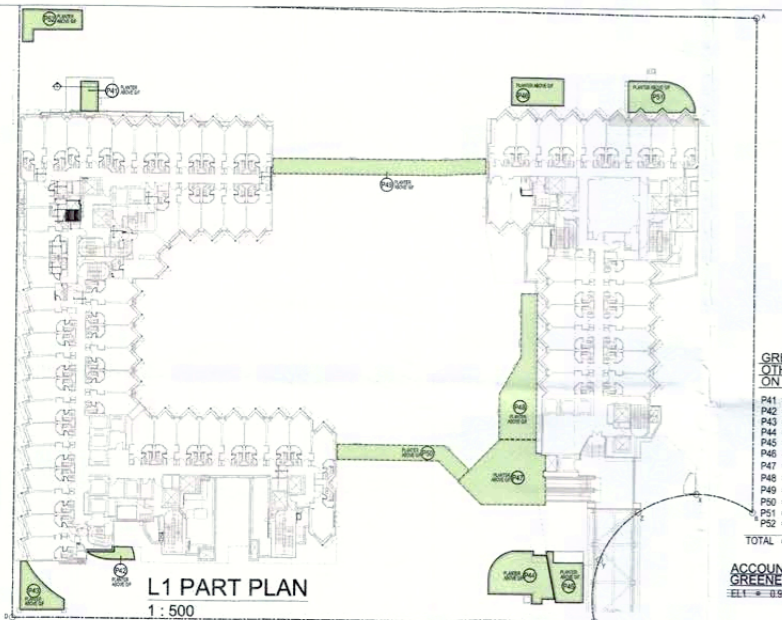
BLOCK PLAN
1:1000

SUSTAINABLE BUILDING DESIGN DEMONSTRATION
SITE COVERAGE OF GREENERY
(SHALL COMPLY WITH PNAP APP-152)

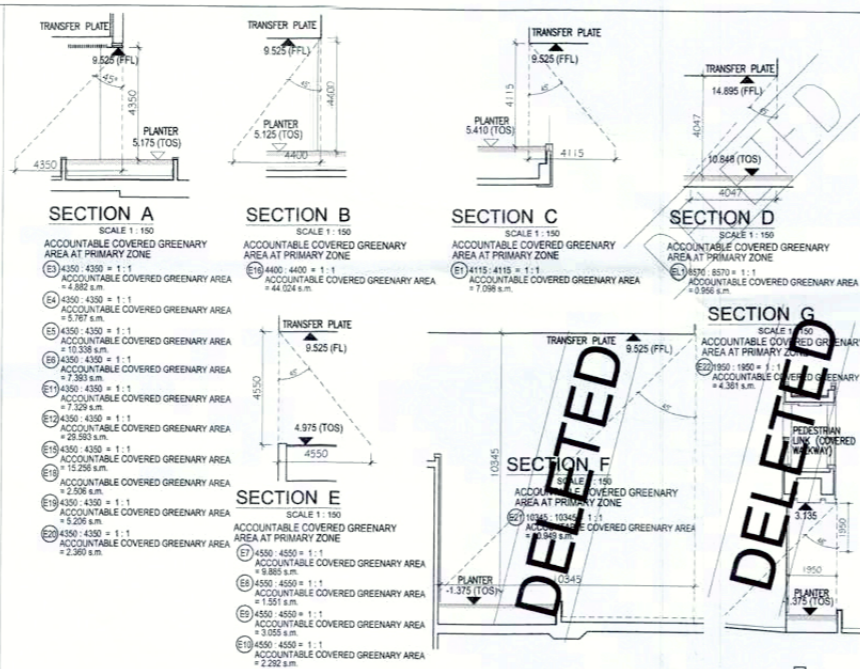
- LEGEND:
 (G) GREENERY AREA
 (GS) GREENERY FOR GRASSCRETE
 (GW) GREENERY FOR WATER FEATURES
 (A) ACCOUNTABLE COVERED GREENERY AREA
 (V) VERTICAL GREENERY



G/F PART PLAN
1:500



L1 PART PLAN
1:500



VERTICAL GREENING

V1	VERTICAL GREENING AREA	2430 x 3200 = 11,976 s.m.
V2	VERTICAL GREENING AREA	2430 x 4900 = 11,178 s.m.
V3	VERTICAL GREENING AREA	2430 x 3570 = 8,189 s.m.
V4	VERTICAL GREENING AREA	2430 x 4600 = 11,178 s.m.
V5	VERTICAL GREENING AREA	2430 x 3560 = 8,699 s.m.
V6	VERTICAL GREENING AREA	2271 x 3790 = 8,607 s.m.
V7	VERTICAL GREENING AREA	3450 x 4705 = 16,232 s.m.

GREENERY AREAS AT PRIMARY ZONE ON G/F

P1	19,875 s.m.
P2	58,657 s.m.
P3	159,660 s.m.
P4	50,399 s.m.
P5	13,940 s.m.
P6	22,794 s.m.
P7	38,068 s.m.
P8	15,798 s.m.
P9	1,454 s.m.
P10	9,064 s.m.
P11	2,862 s.m.
P12	3,760 s.m.
P13	9,918 s.m.
P14	1,860 s.m.
P15	10,285 s.m.
P16	1,500 s.m.
P17	2,465 s.m.
P18	28,534 s.m.
P19	15,826 s.m.
P20	102,370 s.m.
P21	2,149 s.m.
P22	21,486 s.m.
P23	6,222 s.m.
P24	31,865 s.m.
P25	48,245 s.m.
P26	18,176 s.m.
P27	7,068 s.m.
P28	17,328 s.m.
TOTAL	742,736 s.m.

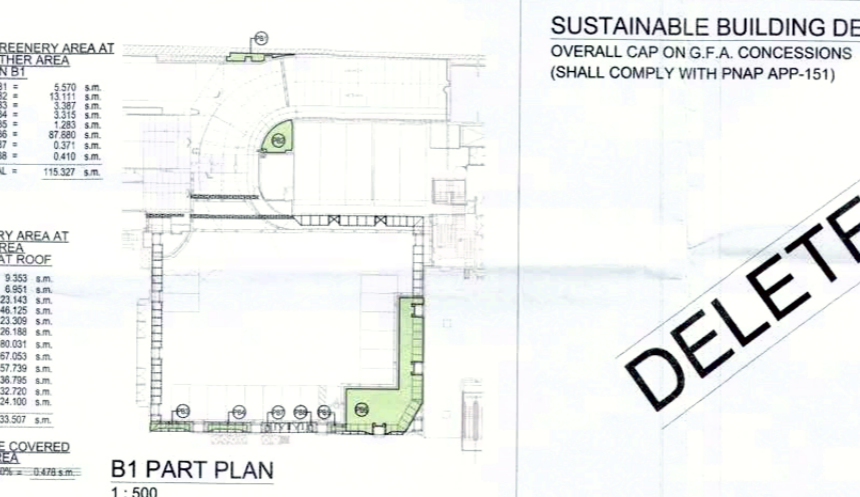
GRASSCRETE AT PRIMARY ZONE ON G/F

C1	288,462 x 50% = 144,231 s.m.
C2	6,916 x 50% = 3,458 s.m.
TOTAL	147,689 s.m.

GREENERY AREAS CALCULATION:
 TOTAL GREENERY AREA CALCULATION UNDER REQUIREMENTS:
 SITE AREA = 7887 s.m.
 REQUIRED GREENERY AREA FOR PRIMARY ZONE = 10% OF SITE AREA = 788.7 s.m. x 10% = 78.87 s.m.
 PROPOSED GREENERY AREA FOR PRIMARY ZONE:
 124,102 s.m. (GREENERY AREA) + 147,689 s.m. (GRASSCRETE) + 77,161 s.m. (ACCOUNTABLE COVERED) + 76,569 s.m. (VERTICAL GREENING) = 1026,121 s.m. > 788.7 s.m.
 REQUIRED TOTAL GREENERY AREAS = 20% OF SITE AREA = 1577.4 s.m. x 20% = 1577.4 s.m.
 MAX. TOTAL GREENING FEATURES = 30% OF TOTAL GREENERY AREAS = 1577.400 s.m. x 30% = 473,220 s.m.
 PROPOSED GREENING FEATURES:
 147,689 s.m. (GRASSCRETE) + 77,161 s.m. (ACCOUNTABLE COVERED GREENERY AREA) + 76,569 s.m. (VERTICAL GREENING) = 301,419 s.m. < 473,220 s.m. (30%)
 PROPOSED GREENERY AREAS AT OTHER AREA:
 115,327 s.m. (GREENERY AREA ON BT) + 433,507 s.m. (GREENERY AREA ON L1 FLAT ROOF) + 548,834 s.m. (PROPOSED GREENERY AREAS AT OTHER AREA) = 1097,668 s.m. > 1577,400 s.m.

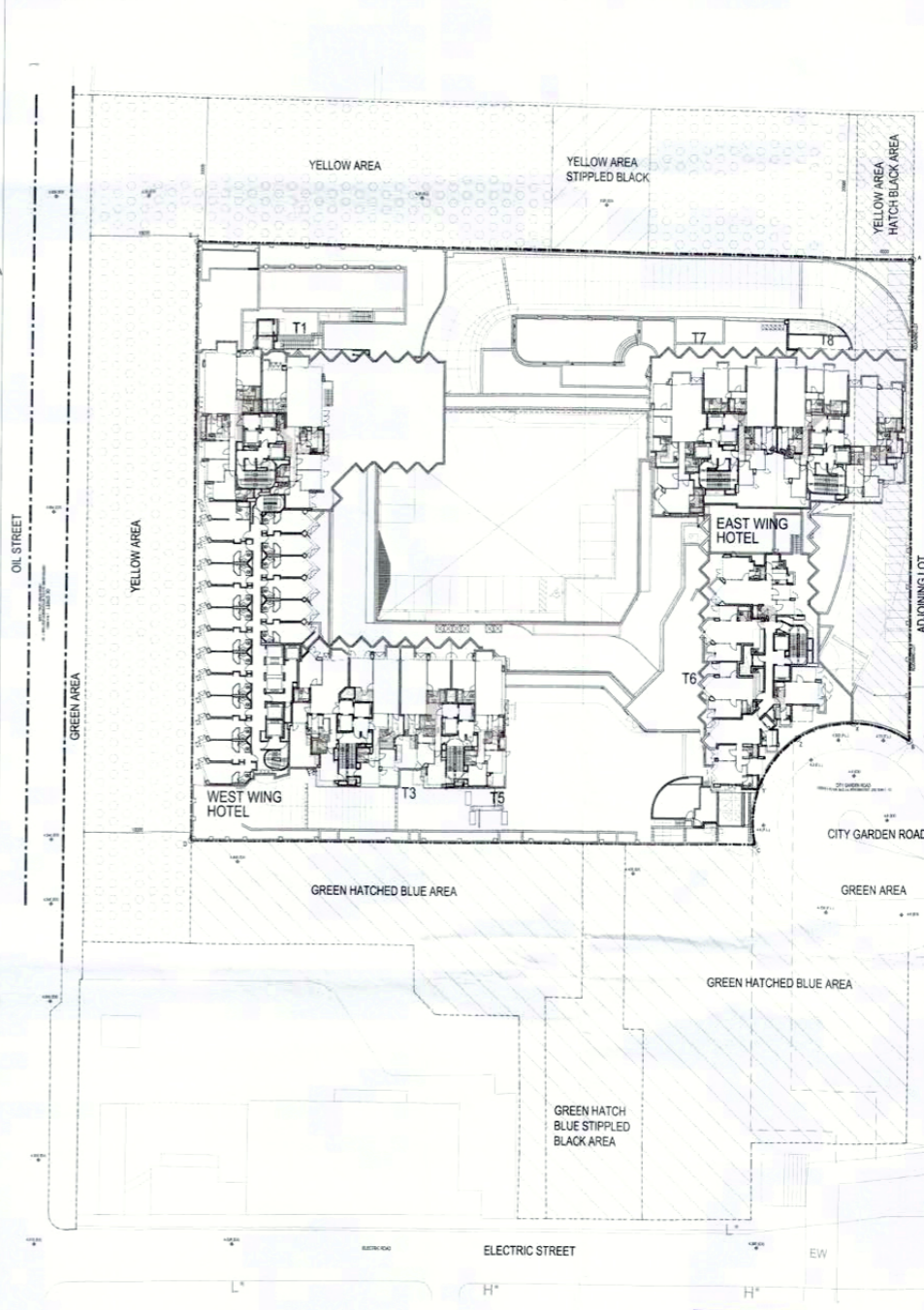
VERTICAL GREENING AT PRIMARY ZONE

V1	11,976 s.m.
V2	11,178 s.m.
V3	8,189 s.m.
V4	11,178 s.m.
V5	8,699 s.m.
V6	8,607 s.m.
V7	16,232 s.m.
TOTAL	76,569 s.m.



B1 PART PLAN
1:500

SUSTAINABLE BUILDING DESIGN DEMONSTRATION
BUILDING SET BACK
(BUILDING SET BACK IS NOT APPLICABLE DUE TO THE SITE IS ADJUT TO A CUL-DE-SAC)



LAYOUT PLAN
1:500

SUSTAINABLE BUILDING DESIGN DEMONSTRATION
OVERALL CAP ON G.F.A. CONCESSIONS
(SHALL COMPLY WITH PNAP APP-151)



B.D. Ref.

F.S.D. Ref.

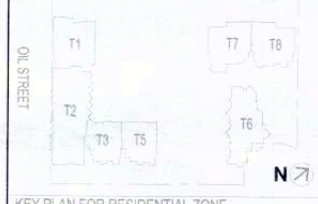
Rev. Date	Amendment	Purpose
-	20120403	FIRST ISSUE SUBMISSION
-	20120927	GENERAL REVISION RE-SUBMISSION
-	20130109	GENERAL REVISION RE-SUBMISSION
-	20130416	GENERAL REVISION RE-SUBMISSION
A	20130821	GENERAL REVISION AMENDMENT
A	20130830	GENERAL REVISION RE-SUBMISSION
B	20131120	GENERAL REVISION AMENDMENT
B	20140221	GENERAL REVISION AMENDMENT
C	20140411	GENERAL REVISION AMENDMENT
C	20141023	GENERAL REVISION AMENDMENT
E	20150626	GENERAL REVISION AMENDMENT
F	20150904	GENERAL REVISION AMENDMENT
G	20151231	GENERAL REVISION AMENDMENT
H	20160905	GENERAL REVISION AMENDMENT
J	20180215	GENERAL REVISION FINAL AMENDMENT
K	20190210	GENERAL REVISION FINAL AMENDMENT

FINAL AMENDMENT

THE WORKS SHOWN ON THESE PLAN ARE TYPE II WORKS IN RESPECT OF WHICH IS APPLIED FOR THE PURPOSE OF FAST TRACK CONSENT APPLICATION UNDER REGULATION 33 OF THE BUILDING (ADMINISTRATION)

CHAN HO CHUNG
 B.A. (ARCH) MARCHE
 H.K.T.A.
 Registered Architect (HK)
 Authorized Person (Architect)

For B.D. SUBMISSION
 Dated: 11 FEB 2019



Plan Approved
 MA Ho-wai
 Senior Building Surveyor
 for BUILDING AUTHORITY
 12 FEB 2019

Project: PROPOSED COMPREHENSIVE DEVELOPMENT AT OIL STREET, NORTH POINT, I.L. 8920, HONG KONG

Drawing Title: SUSTAINABLE BUILDING DESIGN DEMONSTRATION (1)

Job No.	Drawing No.	Revision No.
3926	GB071	K
Scale	Date	CAD Ref.
1:500	MAR.2012	3926GB071
Drawn	Checked	Approved
CHAK	ROY	EC/KL