



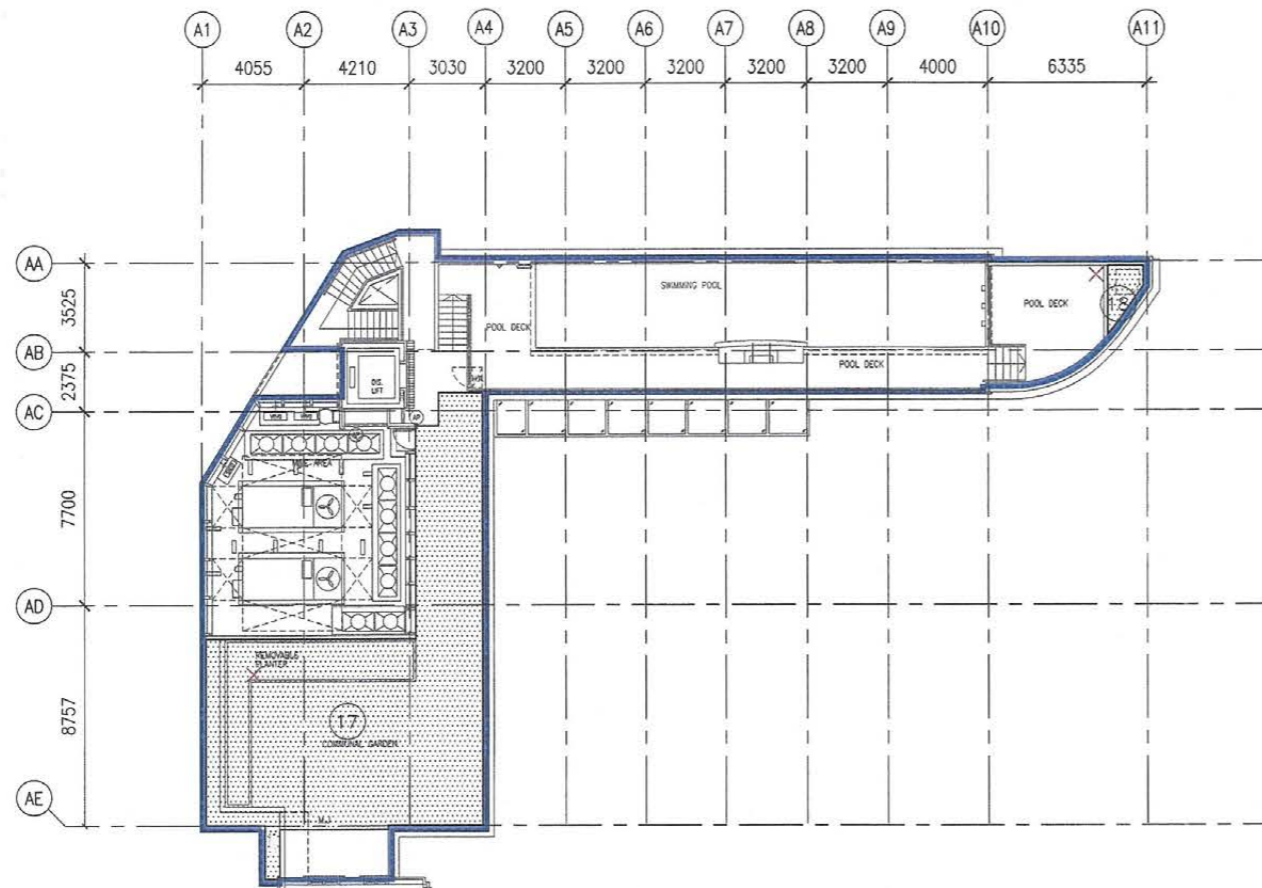


LEGEND

-  BUILDING LINE
-  SITE BOUNDARY LINE
-  GREENERY AT PEDESTRIAN ZONE
-  IRRIGATION POINT

SITE PLAN

1:300 @ A3



ROOF PLAN OF CLUB HOUSE

CALCULATION FOR SITE COVERAGE OF GREENERY :

GREENERY AREA AT PEDESTRIAN ZONE

G/F

①	(SLOPE LESS THAN 45°)	=	49.983 M ²
②		=	1.772 M ²
③		=	1.265 M ²
④		=	4.883 M ²
⑤		=	0.761 M ²
⑥		=	0.872 M ²
⑦		=	26.601 M ²
⑧		=	54.019 M ²
⑨	(SLOPE LESS THAN 45°)	=	7.964 M ²
⑩		=	78.997 M ²
⑪		=	143.211 M ²
⑫		=	9.754 M ²
⑬		=	59.439 M ²
⑭		=	2.032 M ²
⑮		=	4.035 M ²
⑯		=	3.421 M ²

R/F AT LEVEL +75.55 (NOT EXCEEDING 15M FROM G/F)

⑰		=	108.249 M ²
---	--	---	------------------------

R/F AT LEVEL +78.20 (NOT EXCEEDING 15M FROM G/F)

⑱		=	2.534 M ²
---	--	---	----------------------

TOTAL		=	550.304 M ²
-------	--	---	------------------------

REQUIRED GREENERY AREA	=	20% OF SITE AREA (R.B.L. 685)
	=	2337.812 x 20%
	=	467.562 M ²

TOTAL GREENERY AREA PROVIDED	=	550.304 M ²
------------------------------	---	------------------------

TAL SITE COVERAGE OF GREENERY AREA	=	(550.304 / 2337.812) x 100%
	=	23.539% (> 20%, i.e. complied)

1:300 @ A3