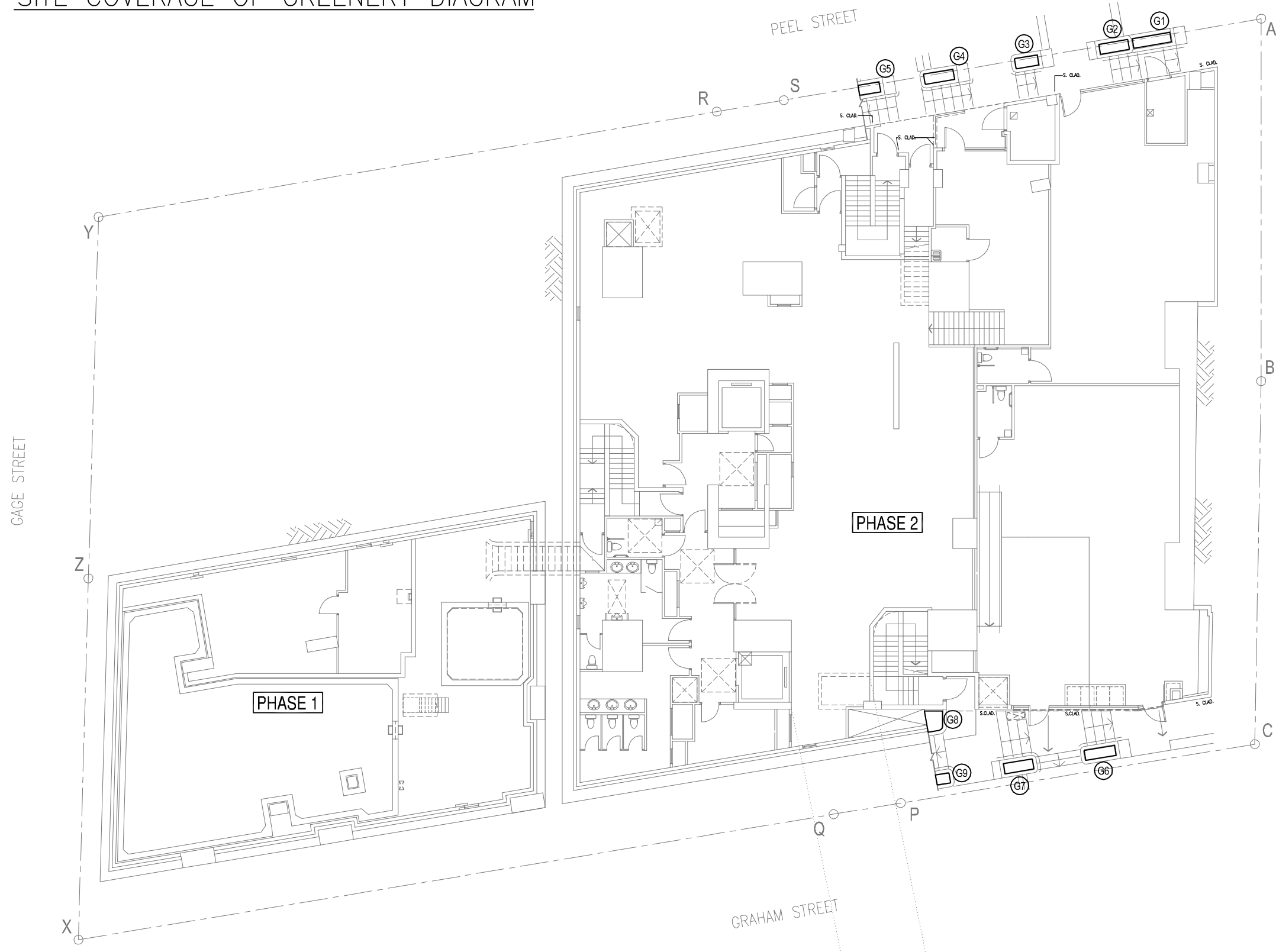


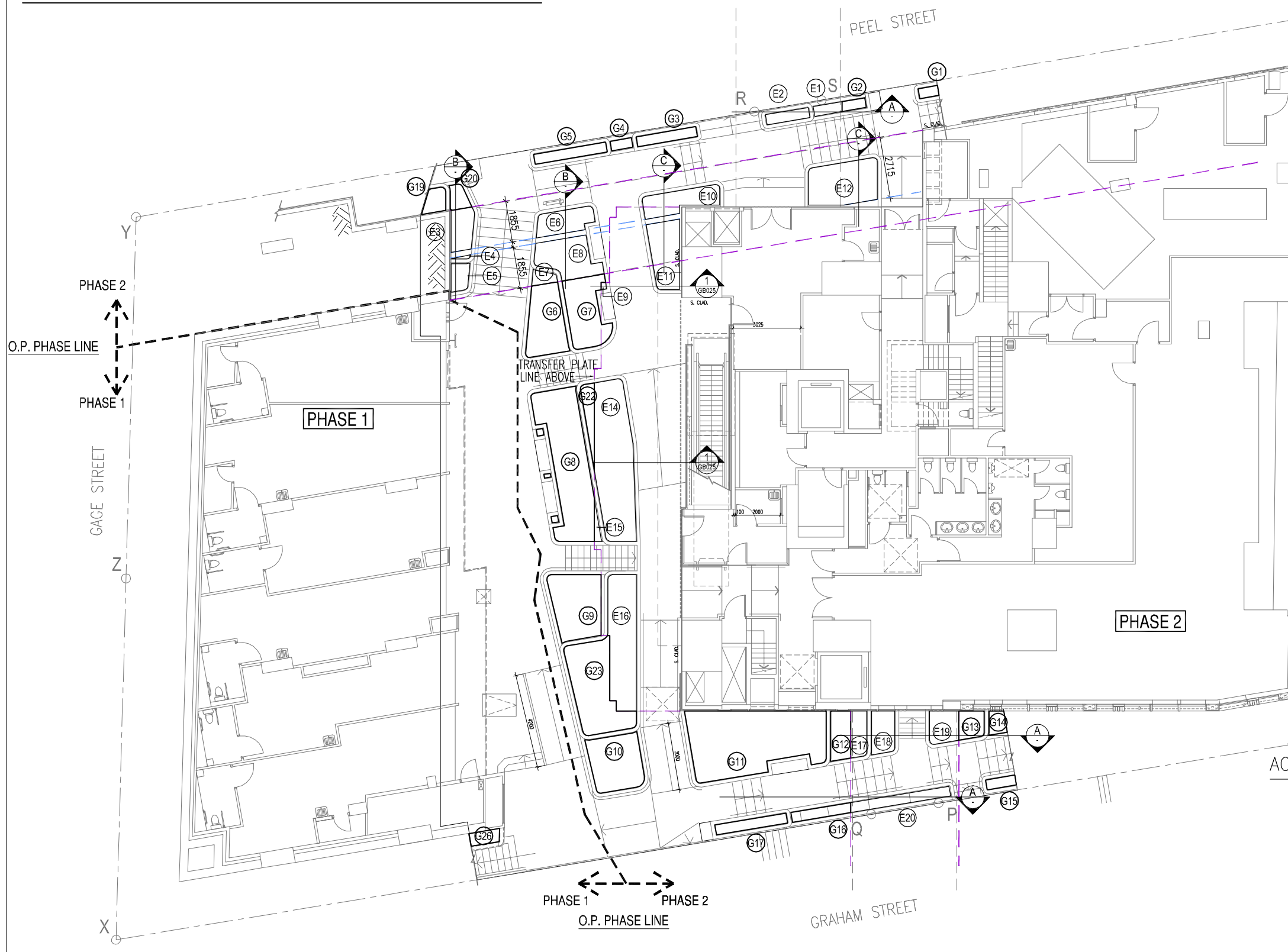
LOWER GROUND FLOOR  
SITE COVERAGE OF GREENERY DIAGRAM



SITE COVERAGE OF GREENERY  
CALCULATION (FOR PHASE 2)

= G1 0.738 s.m.
= G2 0.585 s.m.
= G3 0.461 s.m.
= G4 0.596 s.m.
= G5 0.426 s.m.
= G6 0.618 s.m.
= G7 0.585 s.m.
= G8 0.642 s.m.
= G9 0.274 s.m.
<b>TOTAL = 4.925 s.m. - PRIMARY ZONE</b>

GROUND FLOOR  
SITE COVERAGE OF GREENERY DIAGRAM



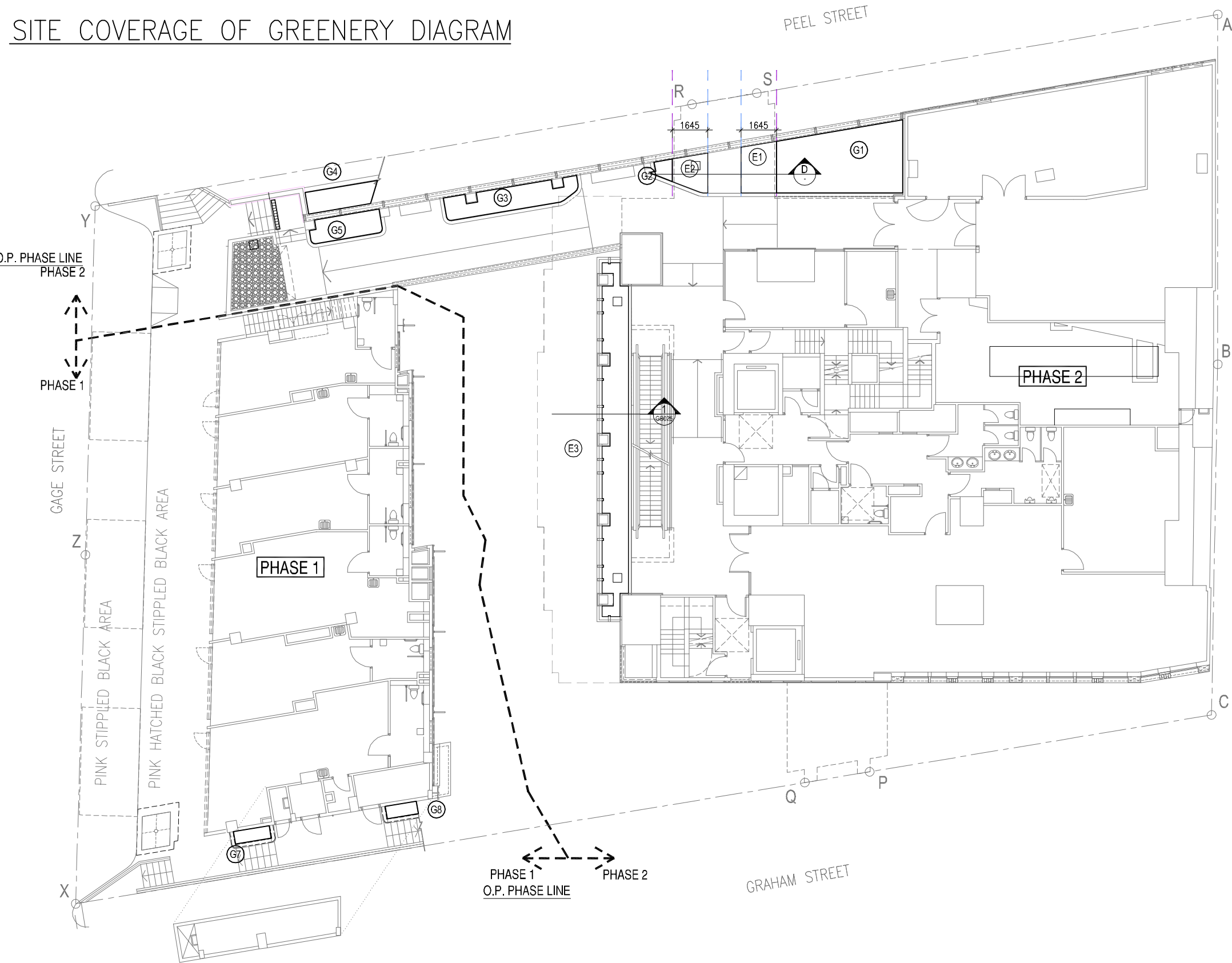
SITE COVERAGE OF GREENERY  
CALCULATION (FOR PHASE 1 & 2)

G1 = 0.395 s.m.
G2 = 0.464 s.m.
G3 = 1.217 s.m.
G4 = 0.418 s.m.
G5 = 1.464 s.m.
G6 = 4.332 s.m.
G7 = 4.913 s.m.
G8 = 11.519 s.m.
G9 = 6.079 s.m.
G10 = 5.465 s.m.
G11 = 15.900 s.m.
G12 = 1.352 s.m.
G13 = 1.366 s.m.
G14 = 0.751 s.m.
G15 = 0.592 s.m.
G16 = 1.168 s.m.
G17 = 1.450 s.m.
G19 = 0.968 s.m.
G20 = 0.797 s.m.
G22 = 1.241 s.m.
G23 = 7.886 s.m.
G26 = 0.776 s.m.
<b>TOTAL = 71.713 s.m. - PRIMARY ZONE</b>

ACCOUNTABLE COVERED GREENERY AREA

E1 = 0.556 x 50% = 0.278 s.m.
E2 = 0.877 x 50% = 0.439 s.m.
E3 = 1.834 x 50% = 0.917 s.m.
E4 = 0.077 x 50% = 0.039 s.m.
E5 = 0.945 x 50% = 0.473 s.m.
E6 = 2.441 x 50% = 1.221 s.m.
E7 = 0.576 x 50% = 0.288 s.m.
E8 = 4.045 x 50% = 2.023 s.m.
E9 = 0.068 x 50% = 0.034 s.m.
E10 = 3.056 x 50% = 1.528 s.m.
E11 = 3.809 x 50% = 1.905 s.m.
E12 = 5.590 x 50% = 2.795 s.m.
E14 = 11.187 x 50% = 5.594 s.m.
E15 = 0.316 x 50% = 0.158 s.m.
E16 = 7.342 x 50% = 3.671 s.m.
E17 = 1.458 x 50% = 0.729 s.m.
E18 = 1.926 x 50% = 0.963 s.m.
E19 = 1.845 x 50% = 0.923 s.m.
E20 = 1.951 x 50% = 0.976 s.m.
<b>TOTAL = 24.954 s.m. - PRIMARY ZONE</b>

UPPER GROUND FLOOR  
SITE COVERAGE OF GREENERY DIAGRAM



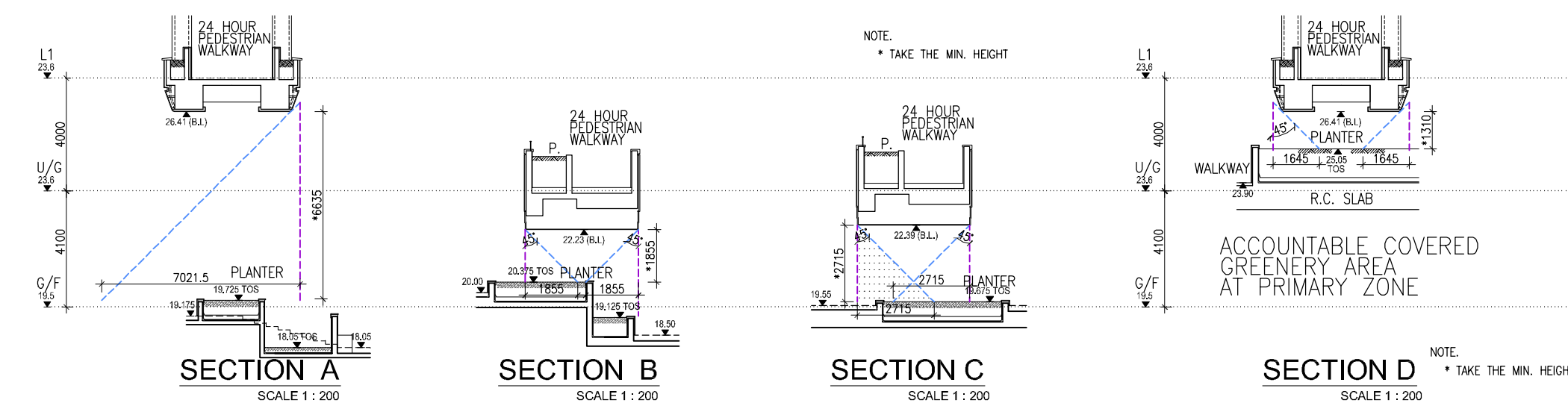
SITE COVERAGE OF GREENERY  
CALCULATION (FOR PHASE 1 & 2)

G1 = 16.589 s.m.
G2 = 0.671 s.m.
G3 = 6.105 s.m.
G4 = 3.171 s.m.
G5 = 3.476 s.m.
G7 = 0.973 s.m.
G8 = 0.849 s.m.
<b>TOTAL = 31.834 s.m. - PRIMARY ZONE</b>

ACCOUNTABLE COVERED  
GREENERY AREA

E1 = 3.694 x 50% = 1.847 s.m.
E2 = 2.442 x 50% = 1.221 s.m.
E3 = 17.556 x 50% = 8.778 s.m.
<b>TOTAL = 11.846 s.m. - PRIMARY ZONE</b>

ACCOUNTABLE COVERED GREENERY AREA  
AT PRIMARY ZONE



E1 6635 : 7022 > 1:1 ACCOUNTABLE COVERED GREENERY AREA = 0.236 s.m.	E2 1855 : 1855 = 1:1 ACCOUNTABLE COVERED GREENERY AREA = 1.234 s.m.	E3 2175 : 2175 = 1:1 ACCOUNTABLE COVERED GREENERY AREA = 3.026 s.m.	E4 1310 : 1645 > 1:1 ACCOUNTABLE COVERED GREENERY AREA = 3.894 s.m.
E5 6635 : 7022 > 1:1 ACCOUNTABLE COVERED GREENERY AREA = 0.077 s.m.	E6 1855 : 1855 = 1:1 ACCOUNTABLE COVERED GREENERY AREA = 0.077 s.m.	E7 1855 : 1855 = 1:1 ACCOUNTABLE COVERED GREENERY AREA = 3.809 s.m.	E8 1310 : 1645 > 1:1 ACCOUNTABLE COVERED GREENERY AREA = 4.142 s.m.
E9 6635 : 7022 > 1:1 ACCOUNTABLE COVERED GREENERY AREA = 1.438 s.m.	E10 1855 : 1855 = 1:1 ACCOUNTABLE COVERED GREENERY AREA = 0.945 s.m.	E11 1855 : 1855 = 1:1 ACCOUNTABLE COVERED GREENERY AREA = 2.441 s.m.	E12 1855 : 1855 = 1:1 ACCOUNTABLE COVERED GREENERY AREA = 5.590 s.m.
E13 6635 : 7022 > 1:1 ACCOUNTABLE COVERED GREENERY AREA = 1.926 s.m.	E14 1855 : 1855 = 1:1 ACCOUNTABLE COVERED GREENERY AREA = 11.187 s.m.	E15 1855 : 1855 = 1:1 ACCOUNTABLE COVERED GREENERY AREA = 0.316 s.m.	E16 1855 : 1855 = 1:1 ACCOUNTABLE COVERED GREENERY AREA = 7.342 s.m.
E17 6635 : 7022 > 1:1 ACCOUNTABLE COVERED GREENERY AREA = 1.845 s.m.	E18 1855 : 1855 = 1:1 ACCOUNTABLE COVERED GREENERY AREA = 1.951 s.m.	E19 1855 : 1855 = 1:1 ACCOUNTABLE COVERED GREENERY AREA = 1.845 s.m.	E20 1855 : 1855 = 1:1 ACCOUNTABLE COVERED GREENERY AREA = 1.951 s.m.

B.D. Ref.  
BD 2/2073/10(P)  
F.S.D. Ref.  
FP 8/28349  
Rev. Date Amendment Purpose  
29-10-2018 FIRST ISSUE SUMMARY OF GREENERY

LEGEND :  
[ PHASE 1 ] PHASE 1 AREA  
OCCUPATION PERMIT  
OBTAINED ON 25 AUGUST 2016  
[ PHASE 2 ] PHASE 2 AREA

This drawing and the contents herein are the copyright of LWK & Partners (HK) Ltd.  
No part of the drawing and the design contained herein may be reproduced without the prior written consent of a director of LWK & Partners (HK) Ltd.  
Do not take measurements directly from this drawing.  
Check and verify all dimensions on site.  
Read this drawing in conjunction with the specifications and all other related drawings.  
Notify the Architect immediately of any discrepancy found herein.  
Client

KING CENTURY INVESTMENTS LIMITED

Project  
PROPOSED DEVELOPMENT  
FOR URA PROJECT H18 (SITE B)  
AT PEEL STREET / GRAHAM STREET  
AT LL. 9038, CENTRAL

Drawing Title  
SUMMARY OF GREENERY (1)

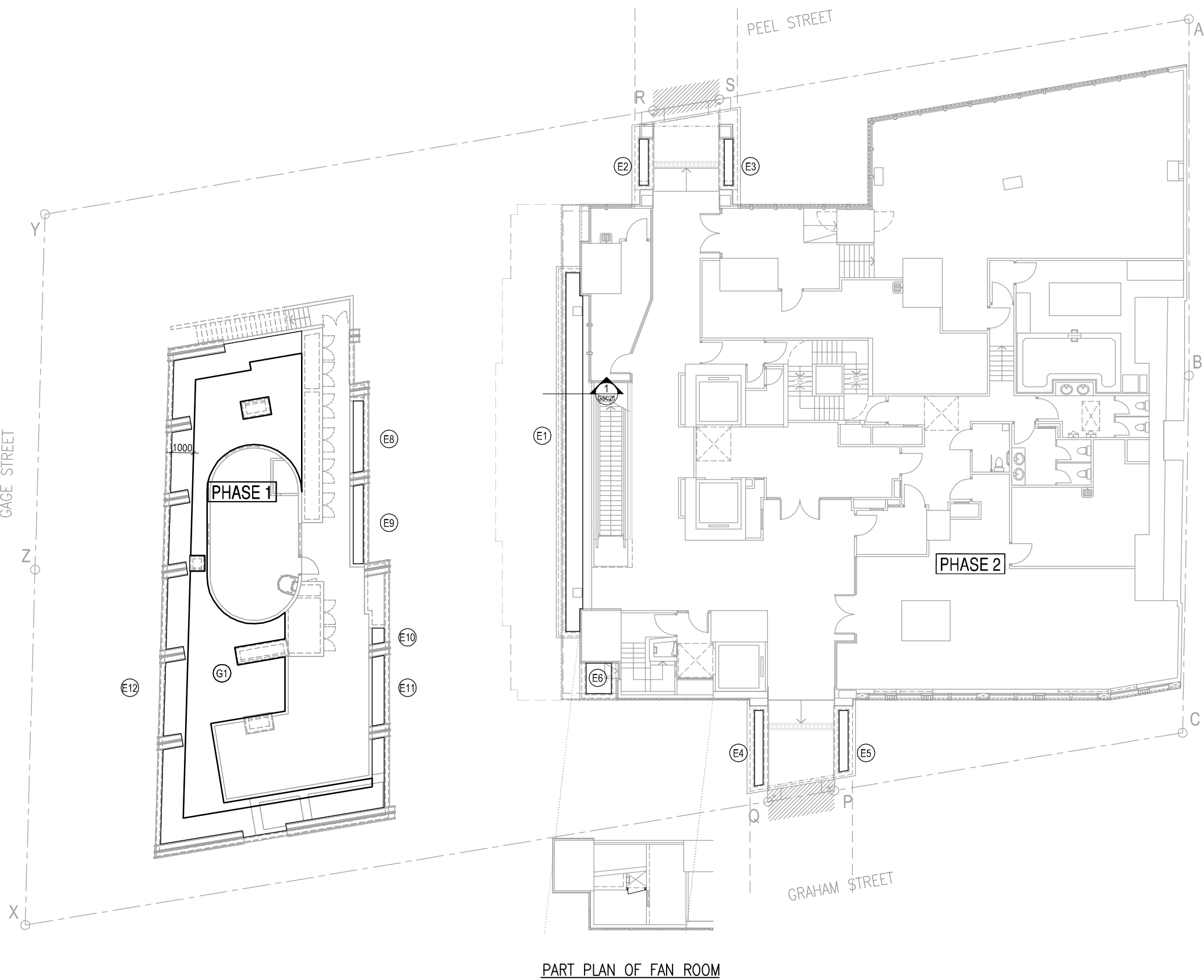
Job No.	Drawing No.	Revision No.
3959	GB044	-
Scale	Date	CAD Ref.
1:200 (A1)	OCT 2018	3959GB044
Drawn	Checked	Approved
HOI	ROY	KL

**lwk&partners**  
architects

15/F, North Tower, World Finance Centre, Harbour City, Tsim Sha Tsui, Kowloon.  
T: 852-2574 1833 F: 852-2572 4908 E: lwk@lwk.com  
梁廣聯建築師(香港)事務所有限公司  
九龍尖沙咀海港城環球金融中心北座15樓



LEVEL 1 FLOOR  
SITE COVERAGE OF GREENERY DIAGRAM



ACCOUNTABLE COVERED GREENERY AREA CALCULATION

E1 = 12.015 x 50% = 6.008 s.m.  
E2 = 0.840 x 50% = 0.420 s.m.  
E3 = 0.840 x 50% = 0.420 s.m.  
E4 = 1.362 x 50% = 0.681 s.m.  
E5 = 1.105 x 50% = 0.553 s.m.  
E6 = 1.599 x 50% = 0.800 s.m.  
TOTAL = 8.882 s.m. - PRIMARY ZONE

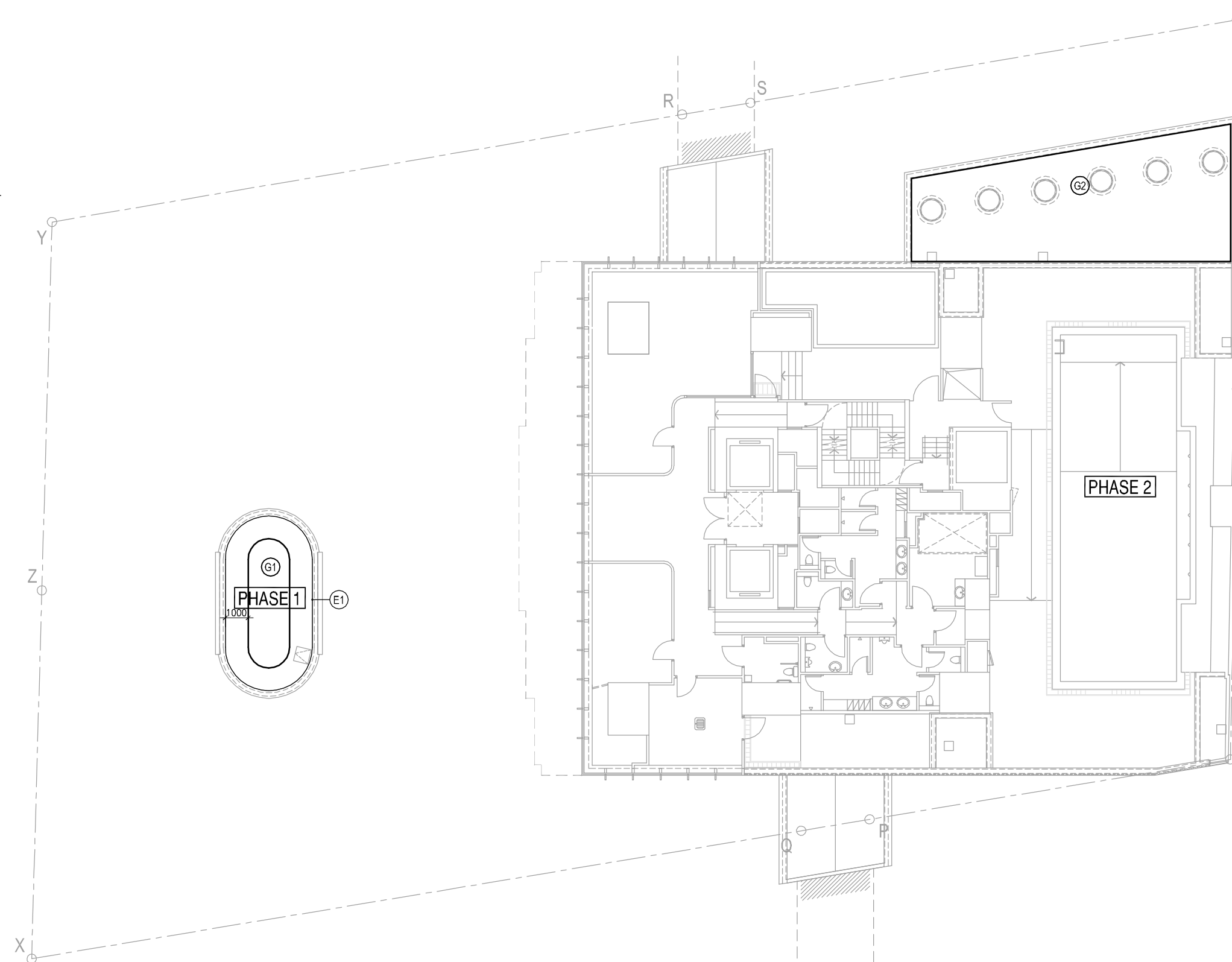
ACCOUNTABLE INACCESSIBLE FLAT ROOF GREENERY AREA CALCULATION

E8 = 1.457 x 50% = 0.729 s.m.  
E9 = 1.602 x 50% = 0.801 s.m.  
E10 = 0.374 x 50% = 0.187 s.m.  
E11 = 1.713 x 50% = 0.857 s.m.  
E12 = 35.759 x 50% = 17.880 s.m.  
TOTAL = 20.454 s.m. - INACCESSIBLE ROOF

SITE COVERAGE OF GREENERY CALCULATION

G1 = 50.998 s.m.  
TOTAL = 50.998 s.m. - OTHER AREA

LEVEL 2 FLOOR  
SITE COVERAGE OF GREENERY DIAGRAM



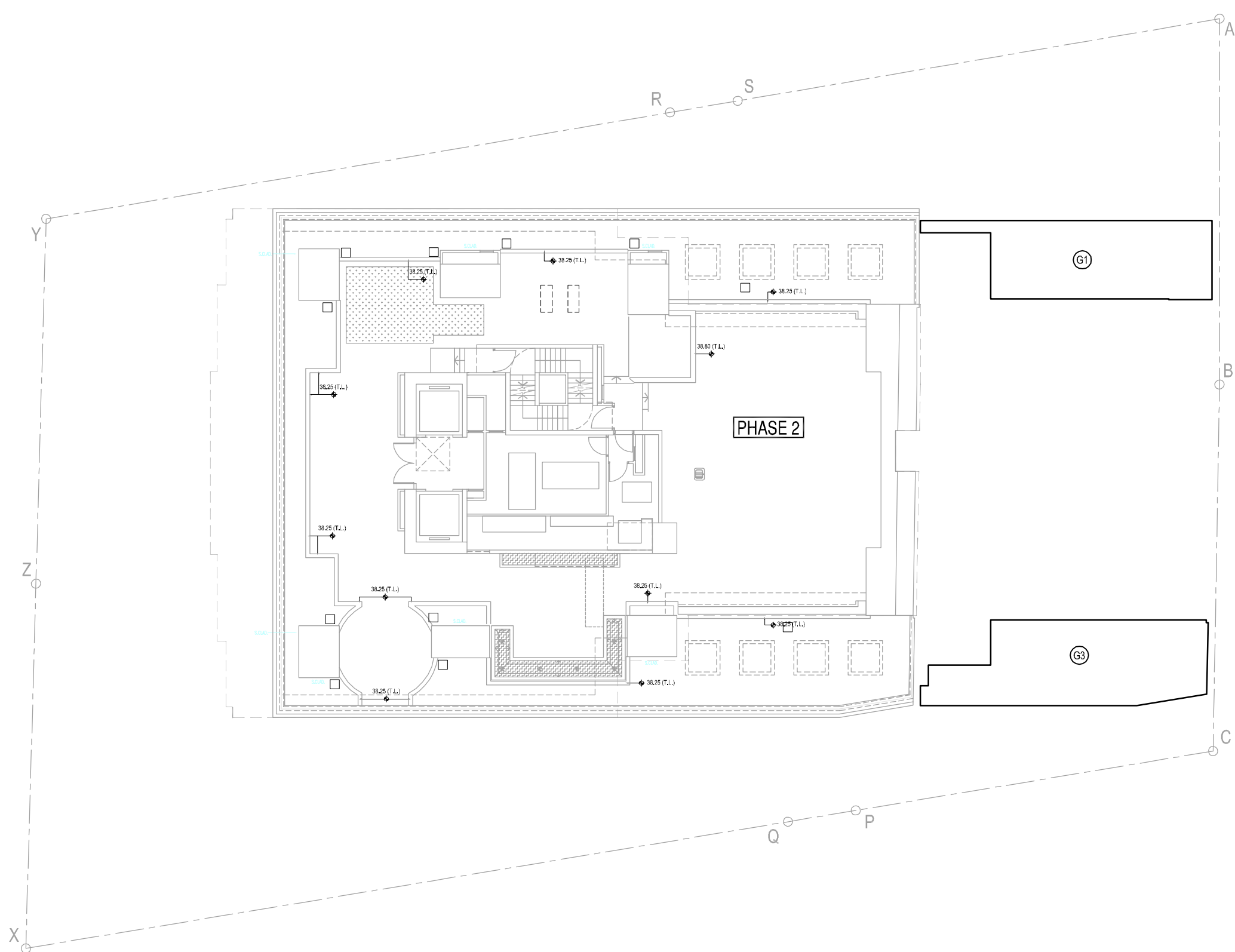
SITE COVERAGE OF GREENERY CALCULATION

G1 = 9.609 s.m.  
G2 = 67.622 s.m.  
TOTAL = 77.231 s.m. - OTHER AREA

ACCOUNTABLE INACCESSIBLE FLAT ROOF GREENERY AREA CALCULATION

E1 = 26.168  
DEDUCT AREA :  
G1 = 9.609 s.m. - OTHER AREA  
B SUB-TOTAL = 16.559 s.m. x 50% = 8.280 s.m.  
TOTAL = 8.280 s.m. - INACCESSIBLE ROOF

LEVEL 3 FLOOR  
SITE COVERAGE OF GREENERY DIAGRAM



SITE COVERAGE OF GREENERY CALCULATION

G1 = 35.833 s.m.  
G2 = 40.887 s.m.  
TOTAL = 76.720 s.m. - OTHER AREA

SCHEDULE OF GREENERY AREA

LOWER GROUND FLOOR GREENERY AREA	GROUND FLOOR GREENERY AREA	GROUND FLOOR ACCOUNTABLE COVERED GREENERY AREA	UPPER GROUND FLOOR GREENERY AREA	LEVEL 1 FLOOR ACCOUNTABLE COVERED GREENERY AREA
G1 0.738 s.m. G2 0.585 s.m. G3 0.461 s.m. G4 0.596 s.m. G5 0.426 s.m. G6 0.618 s.m. G7 0.585 s.m. G8 0.642 s.m. G9 0.274 s.m. TOTAL = 4.925 s.m. - PRIMARY ZONE	G1 = 0.395 s.m. G2 = 0.464 s.m. G3 = 1.217 s.m. G4 = 0.418 s.m. G5 = 1.464 s.m. G6 = 4.932 s.m. G7 = 4.913 s.m. G8 = 11.519 s.m. G9 = 6.079 s.m. G10 = 5.465 s.m. G11 = 15.900 s.m. G12 = 1.952 s.m. G13 = 1.366 s.m. G14 = 0.751 s.m. G15 = 0.592 s.m. G16 = 1.168 s.m. G17 = 1.450 s.m. G19 = 0.969 s.m. G20 = 0.797 s.m. G22 = 1.241 s.m. G23 = 7.886 s.m. G26 = 0.776 s.m. TOTAL = 71.713 s.m. - PRIMARY ZONE	E1 = 0.556 x 50% = 0.278 s.m. E2 = 0.877 x 50% = 0.439 s.m. E3 = 1.834 x 50% = 0.917 s.m. E4 = 0.077 x 50% = 0.039 s.m. E5 = 0.945 x 50% = 0.473 s.m. E6 = 2.441 x 50% = 1.221 s.m. E7 = 0.576 x 50% = 0.288 s.m. E8 = 4.045 x 50% = 2.023 s.m. E9 = 0.068 x 50% = 0.034 s.m. E10 = 3.056 x 50% = 1.528 s.m. E11 = 3.809 x 50% = 1.905 s.m. E12 = 5.590 x 50% = 2.795 s.m. E14 = 11.187 x 50% = 5.594 s.m. E15 = 0.316 x 50% = 0.158 s.m. E16 = 7.342 x 50% = 3.671 s.m. E17 = 1.458 x 50% = 0.729 s.m. E18 = 1.926 x 50% = 0.963 s.m. E19 = 1.845 x 50% = 0.923 s.m. E20 = 1.951 x 50% = 0.976 s.m. TOTAL = 24.954 s.m. - PRIMARY ZONE	G1 = 16.589 s.m. G2 = 0.671 s.m. G3 = 8.105 s.m. G4 = 3.171 s.m. G5 = 3.476 s.m. G7 = 0.973 s.m. G8 = 0.849 s.m. TOTAL = 31.834 s.m. - PRIMARY ZONE	E1 = 12.015 x 50% = 6.008 s.m. E2 = 0.840 x 50% = 0.420 s.m. E3 = 0.840 x 50% = 0.420 s.m. E4 = 1.362 x 50% = 0.681 s.m. E5 = 1.105 x 50% = 0.553 s.m. E6 = 1.599 x 50% = 0.800 s.m. TOTAL = 8.882 s.m. - PRIMARY ZONE

MARKET BLOCK LEVEL 2 FLOOR GREENERY AREA

G1 = 9.609 s.m.  
TOTAL = 9.609 s.m. - OTHER AREA

LEVEL 2 FLOOR GREENERY AREA

G2 = 67.622 s.m.  
TOTAL = 67.622 s.m. - OTHER AREA

LEVEL 2 FLOOR ACCOUNTABLE INACCESSIBLE FLAT ROOF GREENERY AREA

E1 = 26.168  
DEDUCT AREA :  
G1 = 9.609 s.m. - OTHER AREA  
SUB-TOTAL = 16.559 s.m. x 50% = 8.280 s.m.  
TOTAL = 8.280 s.m. - INACCESSIBLE ROOF

LEVEL 3 FLOOR GREENERY AREA

G1 = 35.833 s.m.  
G2 = 40.887 s.m.  
TOTAL = 76.720 s.m. - OTHER AREA

GREENERY AREA CALCULATION

( SHALL BE COMPLIED WITH APP-152 )  
SITE AREA = 1690 s.m.  
REQUIRED COVERAGE ON PRIMARY ZONE = 1690 s.m. x 10% = 169 s.m.  
REQUIRED TOTAL SITE COVERAGE OF GREENERY = 1690 s.m. x 20% = 338 s.m.

COVERAGE OF GREENERY ON PRIMARY ZONE

( SHALL BE COMPLIED WITH APP-152 )  
ACTUAL SITE COVERAGE OF GREENERY ( REFER TO DWG GB034 ) = 4.925 (L/G) + 71.713 (G/F) + 24.954 (G/F) + 31.834 (U/G) + 11.846 (U/G) (GREENERY AREA) (GREENERY AREA) (ACCOUNTABLE COVERED GREENERY AREA) (GREENERY AREA) (ACCOUNTABLE COVERED GREENERY AREA)  
+ 8.882 (1/F) + 20.454 (MB1/F) + 8.280 (MB2/F) (GREENERY AREA) (INACCESSIBLE ROOF) (INACCESSIBLE ROOF)  
= 182.888 s.m. > 169 s.m.

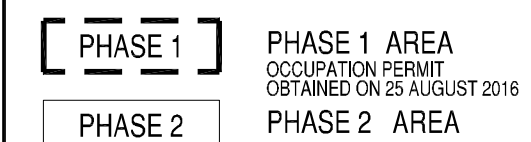
SITE COVERAGE OF GREENERY

( SHALL BE COMPLIED WITH APP-152 )  
ACTUAL SITE COVERAGE OF GREENERY = 182.888 (PRIMARY ZONE) + 50.998 (MB1/F) + 67.622 (L2/F) + 9.609 (MB2/F) + 76.720 (L3/F) (GREENERY AREA) (GREENERY AREA) (GREENERY AREA) (GREENERY AREA)  
= 387.837 s.m. > 338 s.m.

MARKET BLOCK LEVEL 1 FLOOR GREENERY AREA

G1 = 50.998 s.m.  
TOTAL = 50.998 s.m. - OTHER AREA

LEGEND :



- This drawing and the contents herein are the copyright of LWK & Partners (HK) Ltd.
- No part of the drawing and the design contained herein may be reproduced without the prior written consent of a director of LWK & Partners (HK) Ltd.
- Do not take measurements directly from this drawing.
- Check and verify all dimensions on site.
- Read this drawing in conjunction with the specifications and all other related drawings.
- Notify the Architect immediately of any discrepancy found herein.

Client  
KING CENTURY INVESTMENTS LIMITED

Project  
PROPOSED DEVELOPMENT FOR URA PROJECT H18 (SITE B) AT PEEL STREET / GRAHAM STREET AT I.L. 9038, CENTRAL

Drawing Title  
SUMMARY OF GREENERY AREA (2)

Job No.	Drawing No.	Revision No.
3959	GB045	-
Scale	Date	CAD Ref.
1:200 (A1)	OCT 2018	3959GB044
Drawn	Checked	Approved
HOI	ROY	KL

**lwk&partners**  
architects

15/F, North Tower, World Finance Centre, Harbour City, Tsim Sha Tsui, Kowloon.  
T: 852-2574 1833 F: 852-2572 4908 E: lwk@lwk.com  
梁廣聯建築師(香港)事務所有限公司  
九龍尖沙咀海港城環球金融中心北座15樓

B.D. Ref.  
BD 2/2073/10(P)  
F.S.D. Ref.  
FP 8/28349  
Rev. Date Amendment Purpose  
- 29-10-2018 FIRST ISSUE SUMMARY OF GREENERY