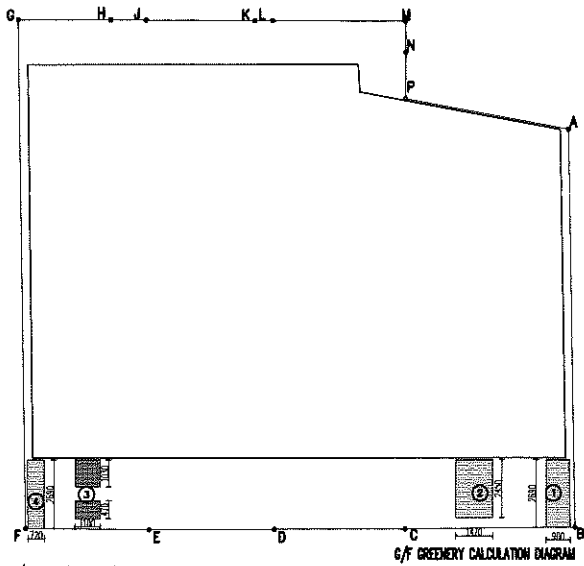
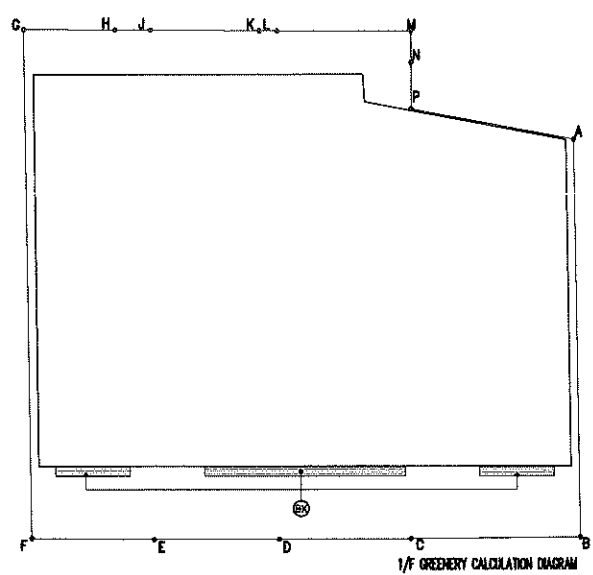


SITE COVERAGE OF GREENERY CALCULATION & DIAGRAM SCALE 1: 300



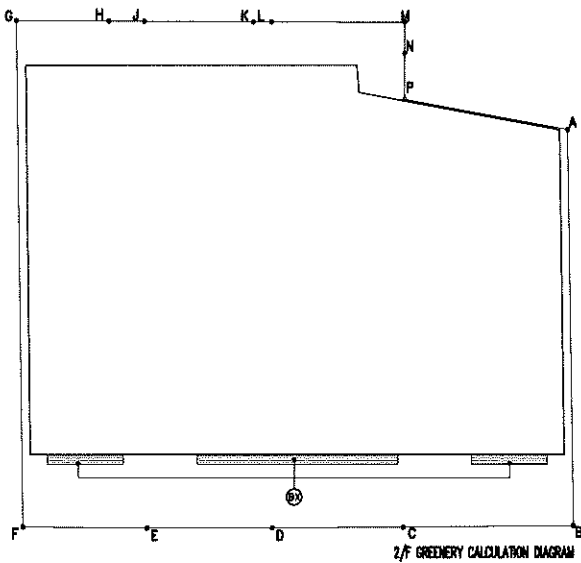
G/F GREENERY AREA

①	LAWN (ON GRADE)	=	2.421	s.m.
②	LAWN (ON GRADE)	=	3.602	s.m.
③	LAWN (ON GRADE)	=	1.650	s.m.
④	LAWN (ON GRADE)	=	1.937	s.m.
SUB-TOTAL		=	9.610	s.m.



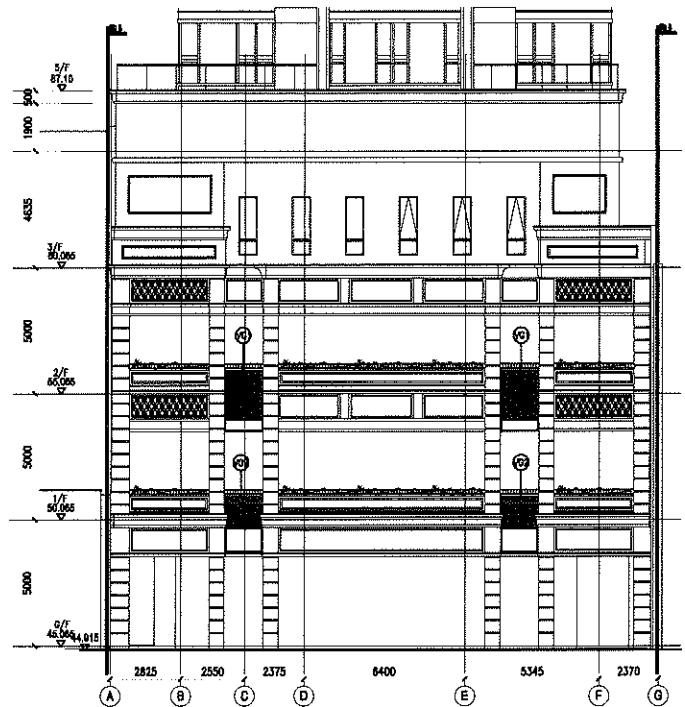
1/F GREENERY AREA

⊗	WINDOW FLOWER BOXES	=	5.611	s.m.
SUB-TOTAL		=	5.611	s.m.



2/F GREENERY AREA

⊗	WINDOW FLOWER BOXES	=	5.611	s.m.
SUB-TOTAL		=	5.611	s.m.



VERTICAL GREENERY AREA

⊗	VERTICAL GREEN	=	2.896 x 2	=	5.792	s.m.
⊗	VERTICAL GREEN	=	1.761 x 2	=	3.522	s.m.
SUB-TOTAL		=	9.314	s.m.		

TOTAL GREENERY AREA REQ. = SET BACK AREA / 2 = 58.053 / 2 sm = 29.027 sm
 TOTAL GREENERY AREA PROVIDED = 9.610 + 5.611 + 5.611 + 8.708 = 29.540 sm > 29.027 sm (OK)

MAX. VERTICAL GREEN AREA = 29.027 x 30% = 8.708 sm