

SITE COVERAGE OF GREENARY

CALCULATION OF GREENARY AT PRIMARY ZONE WITHIN 15m FROM MEAN STREET LEVEL (WITHIN +19.50)

SITE AREA = 20,038m² (EXCLUDING PRIMARY SCHOOL SITE = 4,700m²)
= 20,038m² - 4,700m² = **15,338m²**

REQUIRED MINIMUM TOTAL SITE COVERAGE OF GREENARY
= **20% OF SITE AREA = 3,067.60m²**

SITE COVERAGE OF GREENARY AT PRIMARY ZONE

- G1 1. GREENARY AT (G/F) = G1 = 532.998 m²
- G2 2. GREENARY AT (1/F) = G2 = 445.277 m²
- G3 3. GREENARY AT (2/F) = G3 = 114.364 m²
- VG 4. VERTICAL GREENARY = VG = 409.970 m²
- WF1 6. WATER FEATURE (50%) = WF1 = 60.699 m²

TOTAL GREENARY AREA:
= (532.998 m² + 445.277 m² + 114.364 m² + 409.970 m² + 60.699 m²) = 1563.308 m²
= 1563.308 m² / 15,338 m² x 100%
= **10.192% > 10% (REQUIRED SITE COVERAGE OF GREENARY AT PRIMARY ZONE)**

SITE COVERAGE OF GREENARY AT THE AREA OTHER THAN PRIMARY ZONE

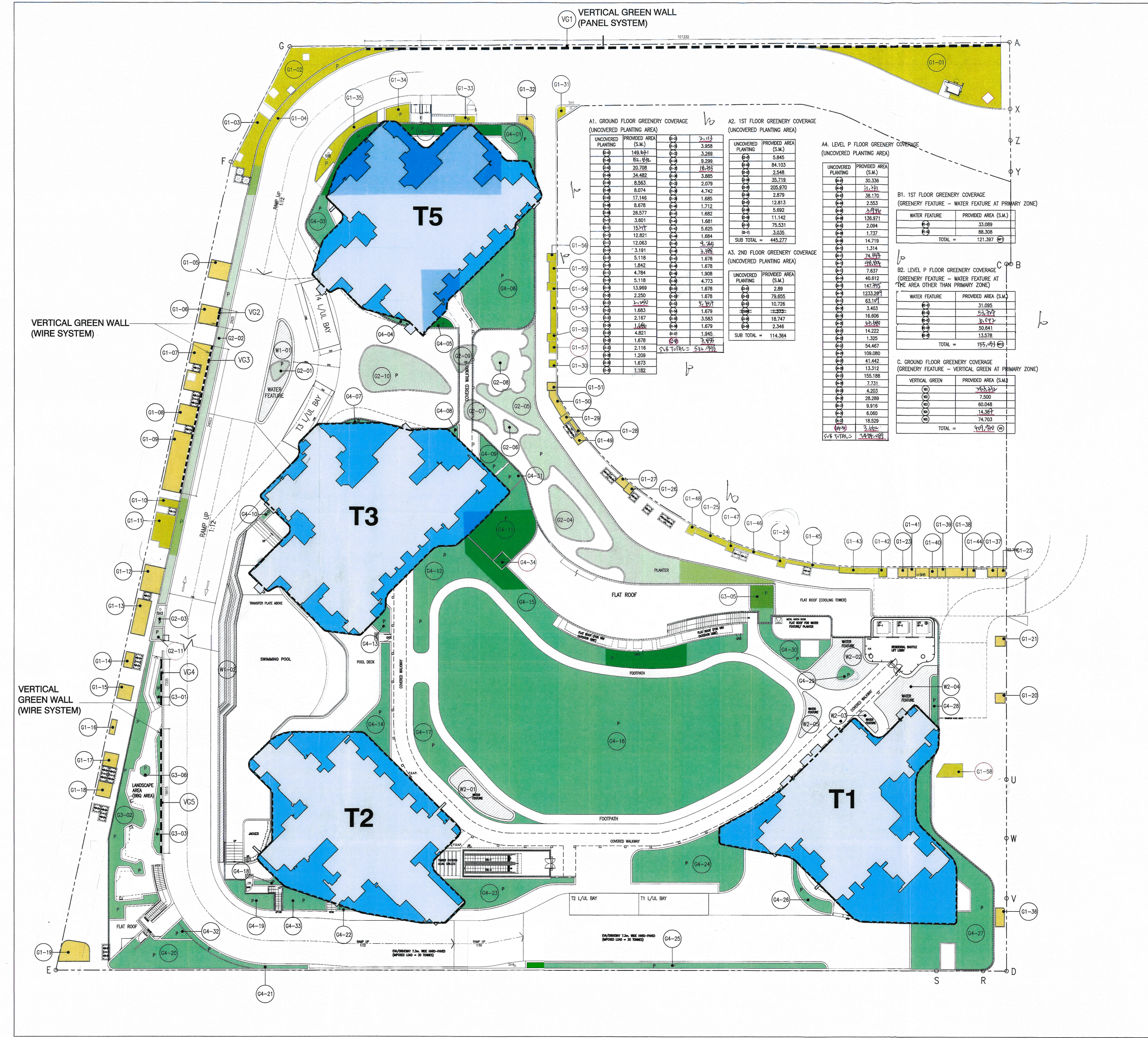
- G4 1. GREENARY AT (P/F) = G4 = 2454.009 m²
 - WF2 2. WATER FEATURE (50%) = WF2 = 77.642 m²
- 2531.651 m²**

TOTAL GREENARY AREA = 2531.651 m²
2531.651 m² / 15,338 m² x 100% = **16.505%**

TOTAL SITE COVERAGE OF GREENARY
Z1 + Z2 = 1563.308 m² + 2531.651 m² = 4094.959 m² > 3,067.60m²
= 4094.959 m² / 15,338 m² x 100% = **26.697% (> 20% OF SITE AREA)**

TOTAL GREENING FEATURES AREA (< 30% OF TOTAL REQUIRED GREENARY)
15,338 m² x 20% x 30% = 920.28 m²
VG + WF = 409.970 m² + 138.740 m² = 548.710 m² (< 920.28 m²)

- ### LEGEND
- TOWERS
 - FLAT ROOF ABOVE TRANSFER PLATE
 - WATER FEATURE
 - VERTICAL GREENARY AT PRIMARY ZONE
 - VERTICAL GREENARY
 - P PLANTER AREA



UNCOVERED PLANTING AREA (S/M)	PROVIDED AREA (S/M)	G1	G2	G3	WF1
168.841	3.288				
84.33	3.288				
30.798	14.16				
34.882	3.800				
8.563	2.079				
17.146	1.860				
6.074	1.560				
6.878	1.712				
19.821	1.894				
3.801	1.981				
13.541	5.820				
12.857	1.894				
12.083	1.746				
3.928	3.288				
5.118	1.278				
4.784	1.878				
5.118	4.773				
1.989	1.678				
2.252	1.978				
3.583	3.800				
2.252	5.767				
1.863	1.878				
2.187	3.583				
1.682	1.678				
1.878	1.894				
1.209	3.789				
4.482	14.887				
13.312	1.878				
7.701	1.878				
4.203	2.88				
28.289	7.800				
9.919	62.088				
6.960	14.387				
18.029	14.763				
3.182	50.641				
3.182	13.878				
5.487	14.763				
129.680					
155.188					
261.864					
253.002					
40.832					
147.935					
183.391					
83.171					
3.453					
18.808					
30.386					
14.222					
1.225					
54.487					
109.680					
47.842					
13.312					
7.701					
4.203					
28.289					
9.919					
6.960					
18.029					
3.182					
3.182					
5.487					
129.680					
155.188					
261.864					
253.002					
40.832					
147.935					
183.391					
83.171					
3.453					
18.808					
30.386					
14.222					
1.225					
54.487					
109.680					
47.842					
13.312					
7.701					
4.203					
28.289					
9.919					
6.960					
18.029					
3.182					
3.182					
5.487					
129.680					
155.188					
261.864					
253.002					
40.832					
147.935					
183.391					
83.171					
3.453					
18.808					
30.386					
14.222					
1.225					
54.487					
109.680					
47.842					
13.312					
7.701					
4.203					
28.289					
9.919					
6.960					
18.029					
3.182					
3.182					
5.487					
129.680					
155.188					
261.864					
253.002					
40.832					
147.935					
183.391					
83.171					
3.453					
18.808					
30.386					
14.222					
1.225					
54.487					
109.680					
47.842					
13.312					
7.701					
4.203					
28.289					
9.919					
6.960					
18.029					
3.182					
3.182					
5.487					
129.680					
155.188					
261.864					
253.002					
40.832					
147.935					
183.391					
83.171					
3.453					
18.808					
30.386					
14.222					
1.225					
54.487					
109.680					
47.842					
13.312					
7.701					
4.203					
28.289					
9.919					
6.960					
18.029					
3.182					
3.182					
5.487					
129.680					
155.188					
261.864					
253.002					
40.832					
147.935					
183.391					
83.171					
3.453					
18.808					
30.386					
14.222					
1.225					
54.487					
109.680					
47.842					
13.312					
7.701					
4.203					
28.289					
9.919					
6.960					
18.029					
3.182					
3.182					
5.487					
129.680					
155.188					
261.864					
253.002					
40.832					
147.935					
183.391					
83.171					
3.453					
18.808					
30.386					
14.222					
1.225					
54.487					
109.680					
47.842					
13.312					
7.701					
4.203					
28.289					
9.919					
6.960					
18.029					
3.182					
3.182					
5.487					
129.680					
155.188					
261.864					
253.002					
40.832					
147.935					
183.391					
83.171					
3.453					
18.808					
30.386					
14.222					
1.225					
54.487					
109.680					
47.842					
13.312					
7.701					
4.203					
28.289					
9.919					
6.960					
18.029					
3.182					
3.182					
5.487					
129.680					
155.188					
261.864					
253.002					
40.832					
147.935					
183.391					
83.171					
3.453					
18.808					
30.386					
14.222					
1.225					
54.487					
109.680					
47.842					
13.312					
7.701					
4.203					
28.289					
9.919					
6.960					
18.029					
3.182					
3.182					
5.487					
129.680					
155.188					
261.864					
253.002					