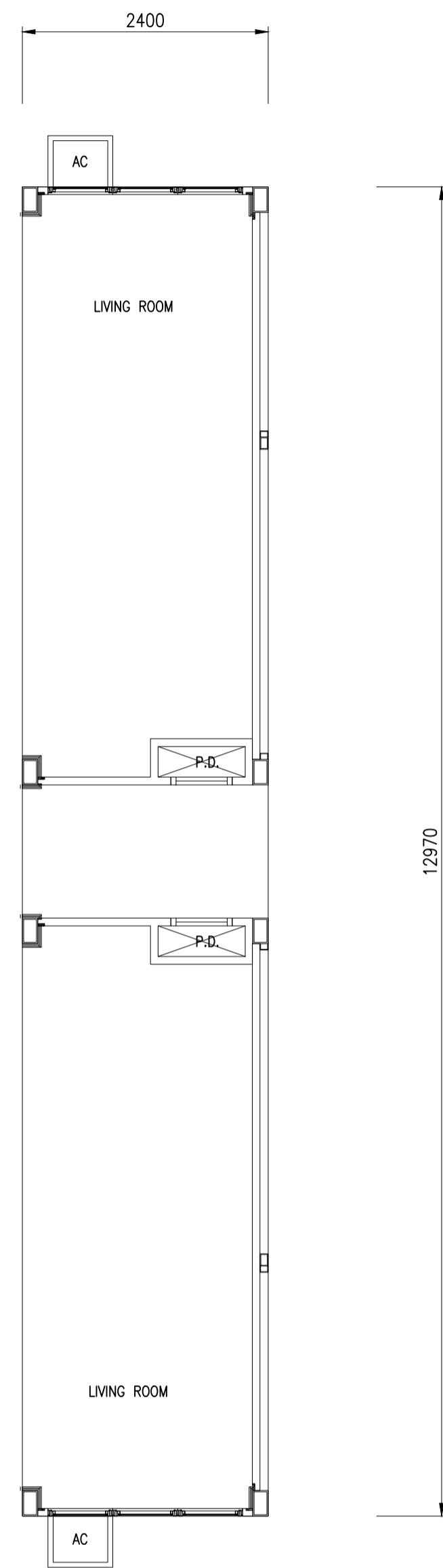
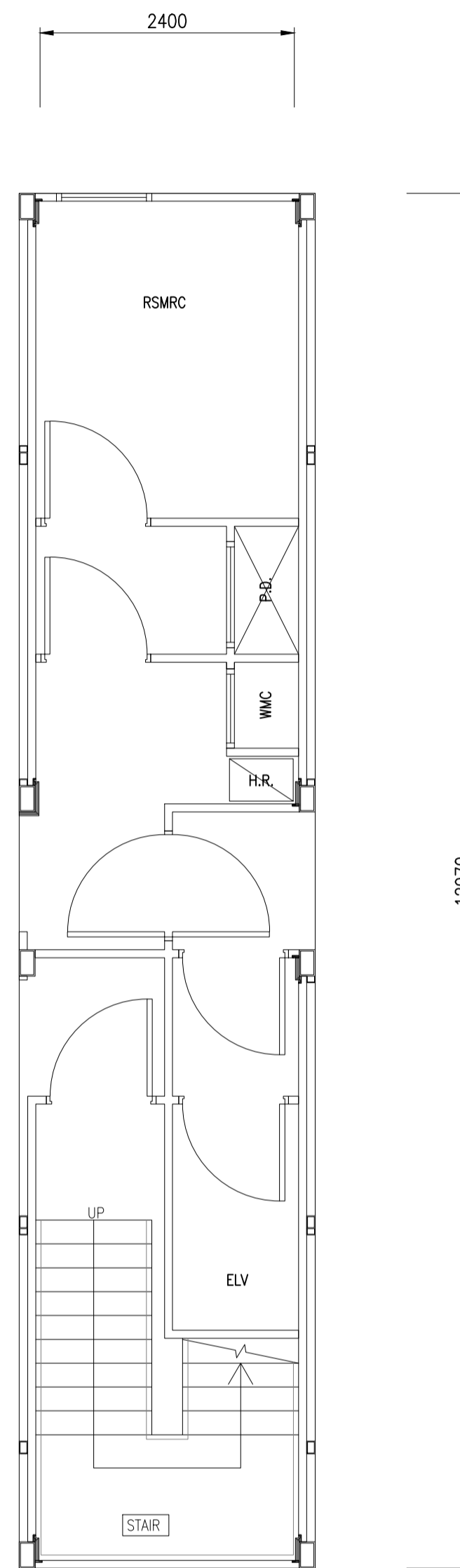


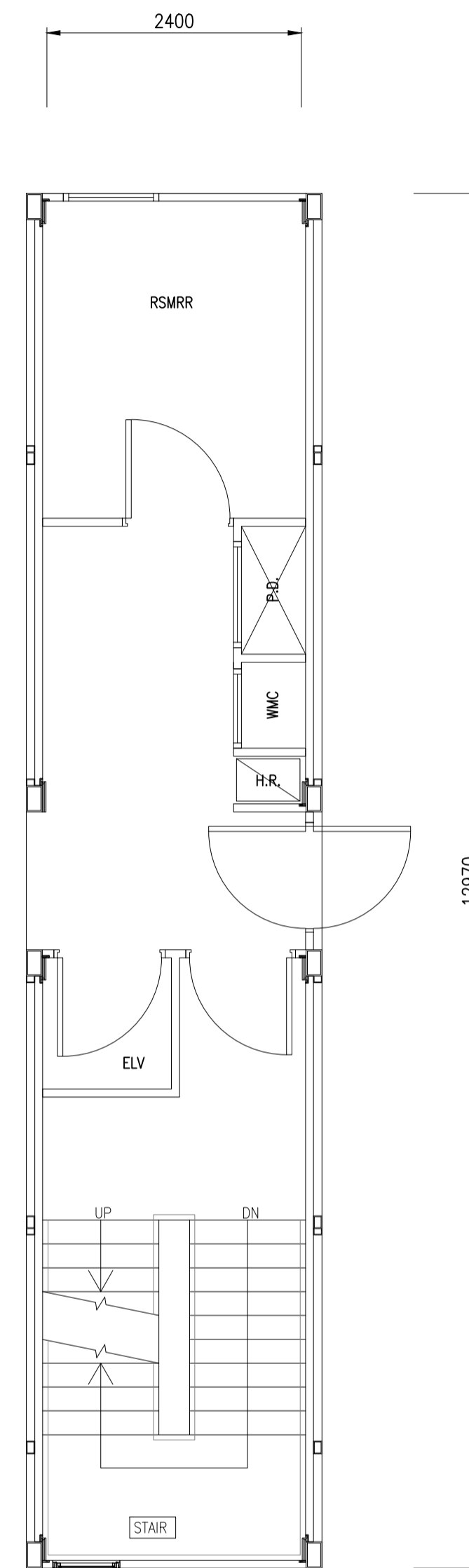
TYPICAL MODULE 1 PLAN
SCALE: 1:50
(TYPICAL MODULE 1R SIMILAR BUT HANDED)



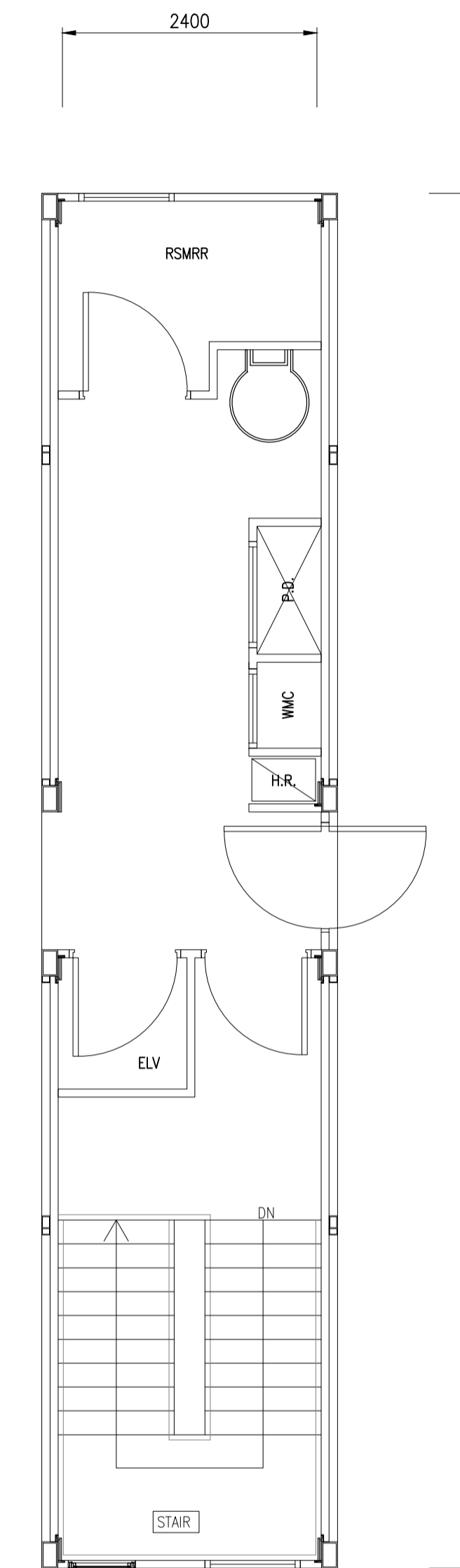
TYPICAL MODULE 2 PLAN
SCALE: 1:50
(TYPICAL MODULE 2R SIMILAR BUT HANDED)



TYPICAL MODULE 3A PLAN
SCALE: 1:50



TYPICAL MODULE 3B PLAN
SCALE: 1:50



TYPICAL MODULE 3C PLAN
SCALE: 1:50

B.D. REF.
F.S.D. REF.
NOTES:
1. DO NOT SCALE THIS DRAWING.
2. FIGURED DIMENSIONS ARE TO BE FOLLOWED.

REV.	DATE	DESCRIPTION

MIC SYSTEM OWNER

中建科工集团有限公司
CHINA CONSTRUCTION SCIENCE AND INDUSTRY CORPORATION LTD.

ARCHITECT & STRUCTURAL ENGINEER

hewson
consulting

AP

PROJECT:
PROPOSED IN-PRINCIPLE ACCEPTANCE FOR STEEL MODULAR INTEGRATED CONSTRUCTION (MIC) SYSTEM OF LOW-RISE 6-STORY BUILDING FOR CHINA CONSTRUCTION SCIENCE AND INDUSTRY CORPORATION LIMITED.

DRAWING TITLE:
TYPICAL PLAN FOR MODULE 1, 2, 3A, 3B & 3C

DRAWN BY MW	SCALE 1:50. (A1)
CHECKED BY NY	DWG NO. HCL/HK149/GSP/MC/PA/000001
JOB No. HK149	DATE JUL 2022
	REVISION A

B/D'S OFFICIAL USE