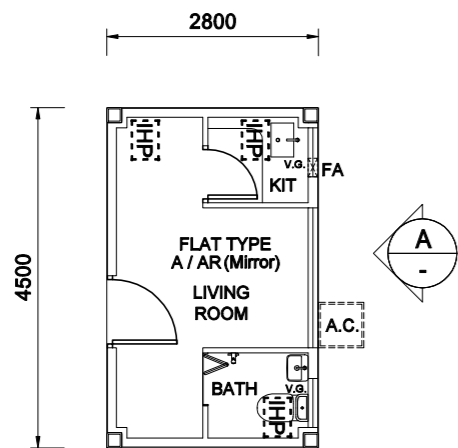
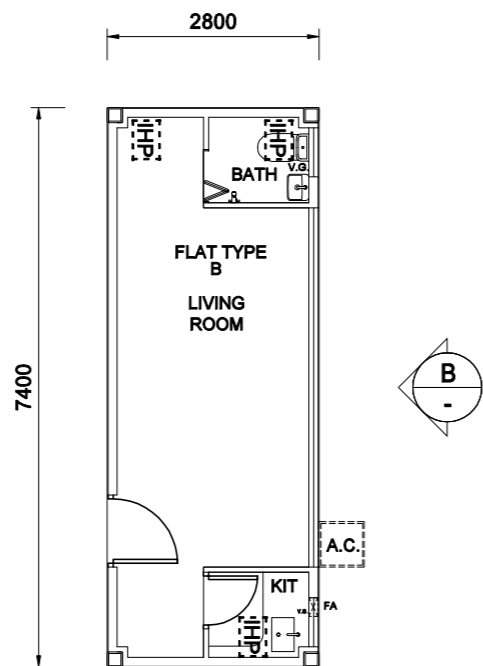


LEGEND:

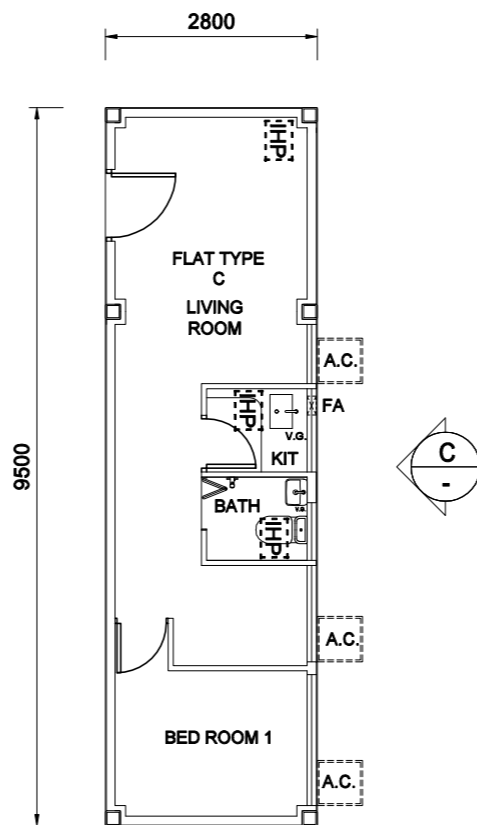
- A.C. AIR-CONDITIONER SUPPORTING FRAME
- IHP INSPECTION HATCH PANEL



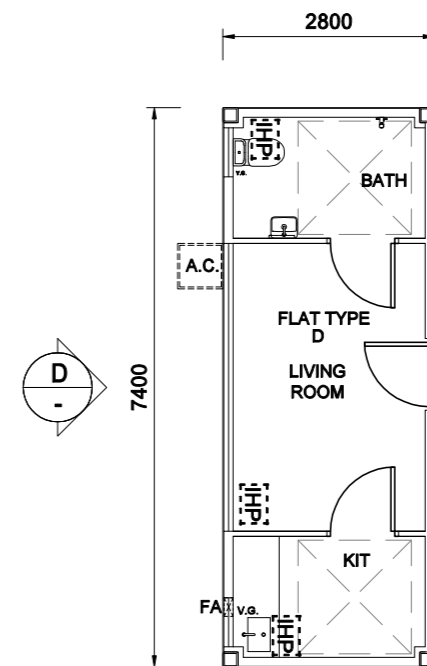
TYPICAL MODULE PLAN
MODULE NO.:
TYPE 01 & TYPE 01R (Mirror)



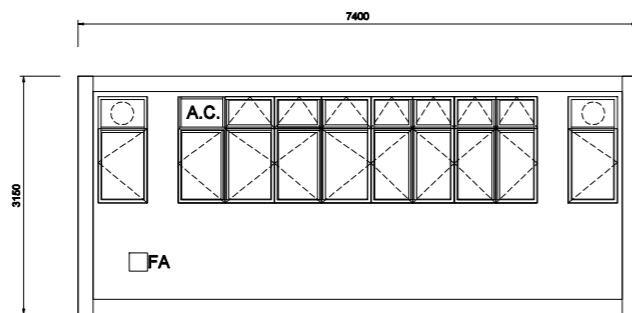
TYPICAL MODULE PLAN
MODULE NO.:
TYPE 02



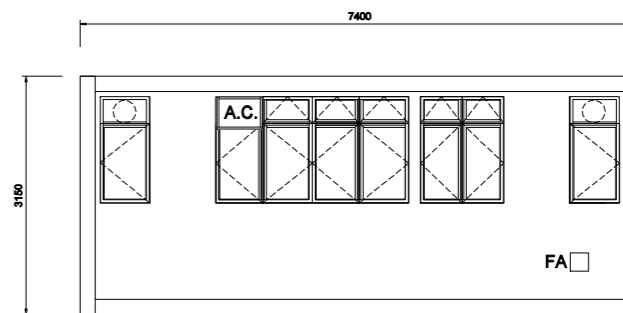
TYPICAL MODULE PLAN
MODULE NO.:
TYPE 03



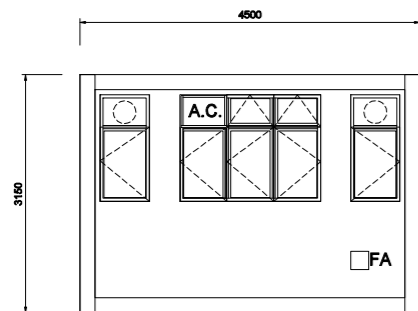
TYPICAL MODULE PLAN
MODULE NO.:
TYPE 04



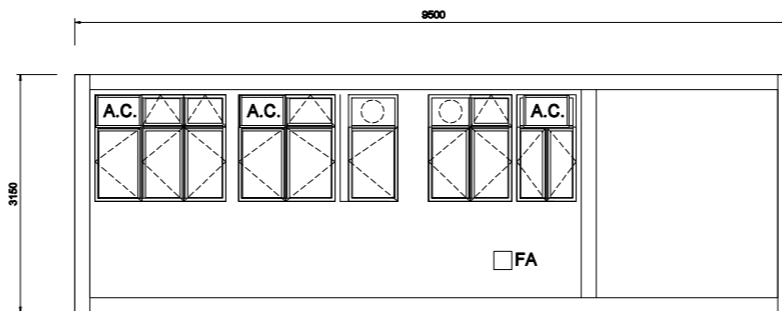
ELEVATION B
MODULE NO.:
TYPE 02



ELEVATION D
MODULE NO.:
TYPE 04

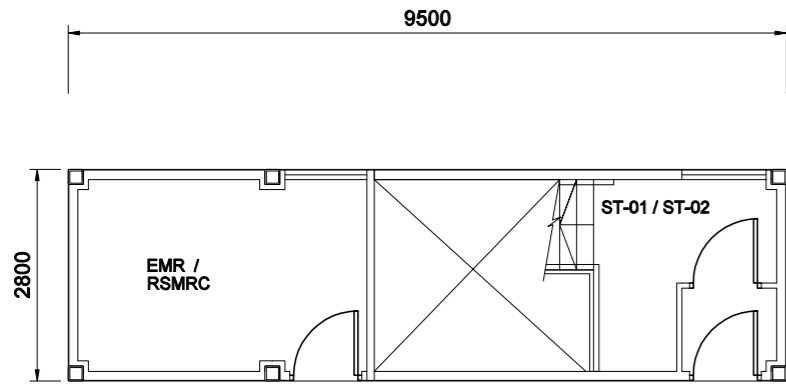


ELEVATION A
MODULE NO.:
TYPE 01 & TYPE 01R (Mirror)

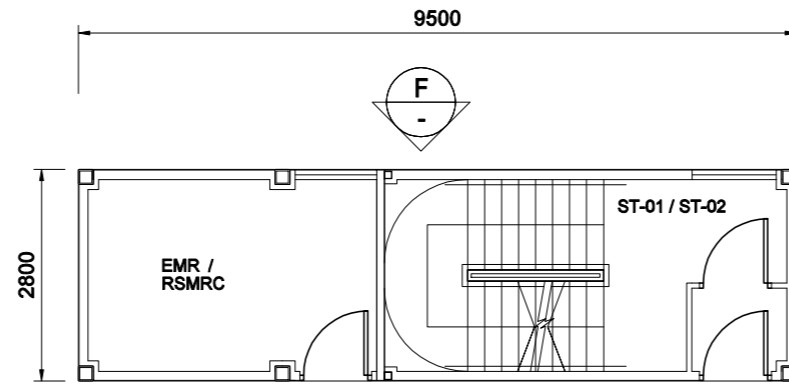


ELEVATION C
MODULE NO.:
TYPE 03

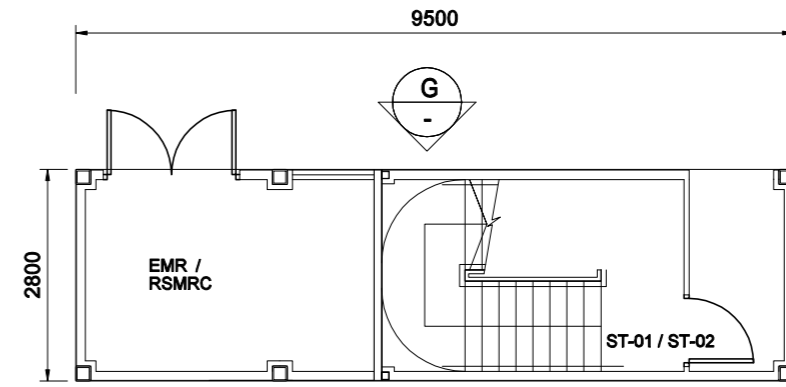
B.D. REF.		
F.S.D. REF.		
NOTES: 1. DO NOT SCALE THIS DRAWING; 2. FIGURED DIMENSIONS ARE TO BE FOLLOWED; 3. READ THIS DRAWING IN CONJUNCTION WITH THE ARCHITECTS SPECIFICATION & CONDITION OF CONTRACT; 4. THIS DRAWING SHALL NOT BE USED FOR CONSTRUCTION PURPOSES UNLESS OTHERWISE CERTIFIED; 5. THIS DRAWING AND DESIGN ARE COPYRIGHT AND NO PORTION MAY BE REPRODUCED WITHOUT THE WRITTEN PERMISSION OF THE ARCHITECTS.		
REV.	DATE	DESCRIPTION
APPLICANT		Industrial Hans Co.Ltd 航行實業有限公司
MANUFACTURER		Guangzhou Moneybox Steel Structure Engineering Co.Ltd 广州市曼布斯钢结构 工程有限公司
ARCHITECT		OIYN LIMITED FOR ARCHITECTS & ASSOCIATES 3/F, BLOCK A, CHEONG FAT FACTORY BUILDING, NO.255-271 UN CHAU STREET, KLN TEL:3489-1990 FAX:3020-9409
STRUCTURAL ENGINEER		OIYN LIMITED FOR ARCHITECTS & ASSOCIATES 3/F, BLOCK A, CHEONG FAT FACTORY BUILDING, NO.255-271 UN CHAU STREET, KLN TEL:3489-1990 FAX:3020-9409
PROJECT:		
PROPOSED 6 STOREYS RESIDENTIAL DEVELOPMENT IN STEEL MIC (MODEL NO.: HANS-3P288)		
DRAWING TITLE:		
PMODULE NO.: TYPE 01 & 01R (MIRROR), 02, 03 & 04		
DRAWN BY	SCALE	
KP	1:100 (A3)	
CHECKED BY	DATE	
BF	28 APR. 2022	
JOB No.	DWG.NO.	REVISION
A-2117	WP-01	
BDS OFFICIAL USE		



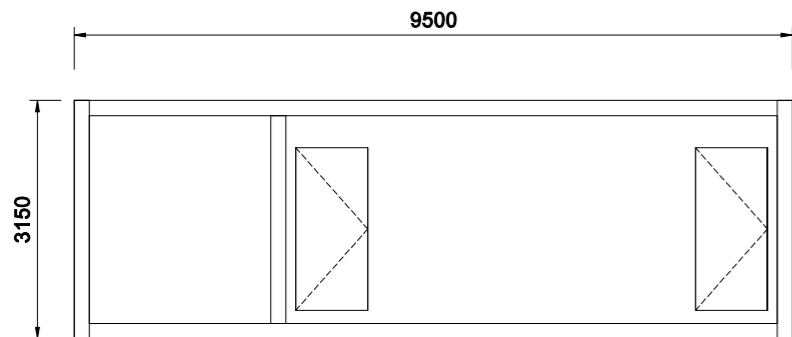
TYPICAL MODULE PLAN
MODULE NO.:
TYPE 07



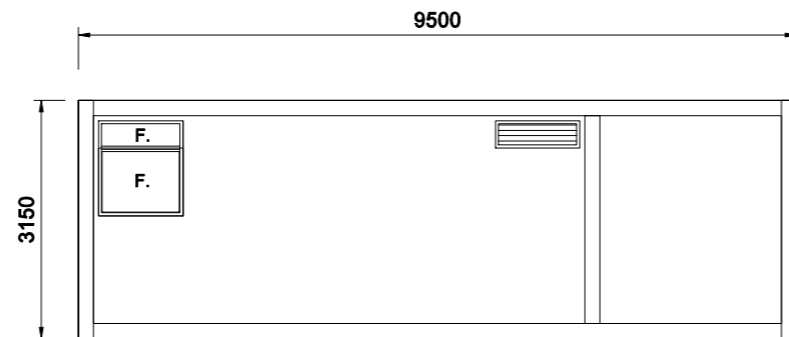
TYPICAL MODULE PLAN
MODULE NO.:
TYPE 06



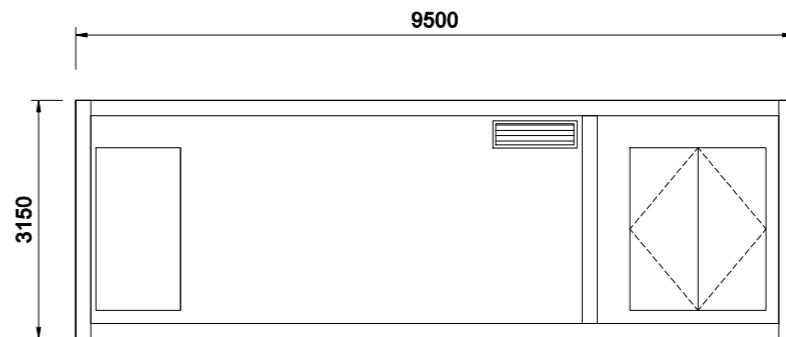
TYPICAL MODULE PLAN
MODULE NO.:
TYPE 05



ELEVATION E
MODULE NO.:
TYPE 07



ELEVATION F
MODULE NO.:
TYPE 06



ELEVATION G
MODULE NO.:
TYPE 05

B.D. REF.
F.S.D. REF.
NOTES:
1. DO NOT SCALE THIS DRAWING;
2. FIGURED DIMENSIONS ARE TO BE FOLLOWED;
3. READ THIS DRAWING IN CONJUNCTION WITH THE ARCHITECTS SPECIFICATION & CONDITION OF CONTRACT;
4. THIS DRAWING SHALL NOT BE USED FOR CONSTRUCTION PURPOSES UNLESS OTHERWISE CERTIFIED;
5. THIS DRAWING AND DESIGN ARE COPYRIGHT AND NO PORTION MAY BE REPRODUCED WITHOUT THE WRITTEN PERMISSION OF THE ARCHITECTS.

REV.	DATE	DESCRIPTION

APPLICANT
Industrial Hans Co. Ltd
航行實業有限公司
ROOM 420, 4/F, NAM FUNG COMMERCIAL CENTRE 1/F, LAM LOK STREET, KOWLOON, HONG KONG
WhatsApp: 6800-0268
E-Mail: info@hans.com.hk

MANUFACTURER
Guangzhou Moneybox Steel Structure Engineering Co. Ltd
曼布斯 Moneybox
广州市曼布斯钢结构工程有限公司

ARCHITECT
OIYN LIMITED
FOR ARCHITECTS & ASSOCIATES
3/F, BLOCK A, CHEONG FAT FACTORY BUILDING, NO.265-271 UN CHAU STREET, HUN
TEL: 3488-1990 FAX: 3020-9409

STRUCTURAL ENGINEER
OIYN LIMITED
FOR ARCHITECTS & ASSOCIATES
3/F, BLOCK A, CHEONG FAT FACTORY BUILDING, NO.265-271 UN CHAU STREET, HUN
TEL: 3488-1990 FAX: 3020-9409

AP

PROJECT:
PROPOSED 6 STOREYS RESIDENTIAL DEVELOPMENT IN STEEL MIC (MODEL NO.: HANS-3P268)

DRAWING TITLE:
PMODULE NO.: TYPE 05, 06 & 07

DRAWN BY KP	SCALE 1:100 (A3)
CHECKED BY BF	DATE 28 APR. 2022
JOB No. A-2117	DWG. NO. WP-02
	REVISION

BDS OFFICIAL USE