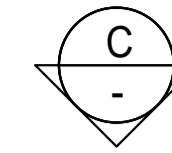
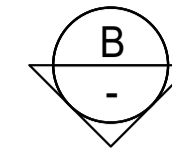
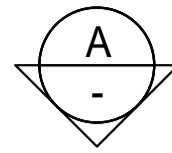


LEGEND.

IHP INSPECTION HATCH PANEL



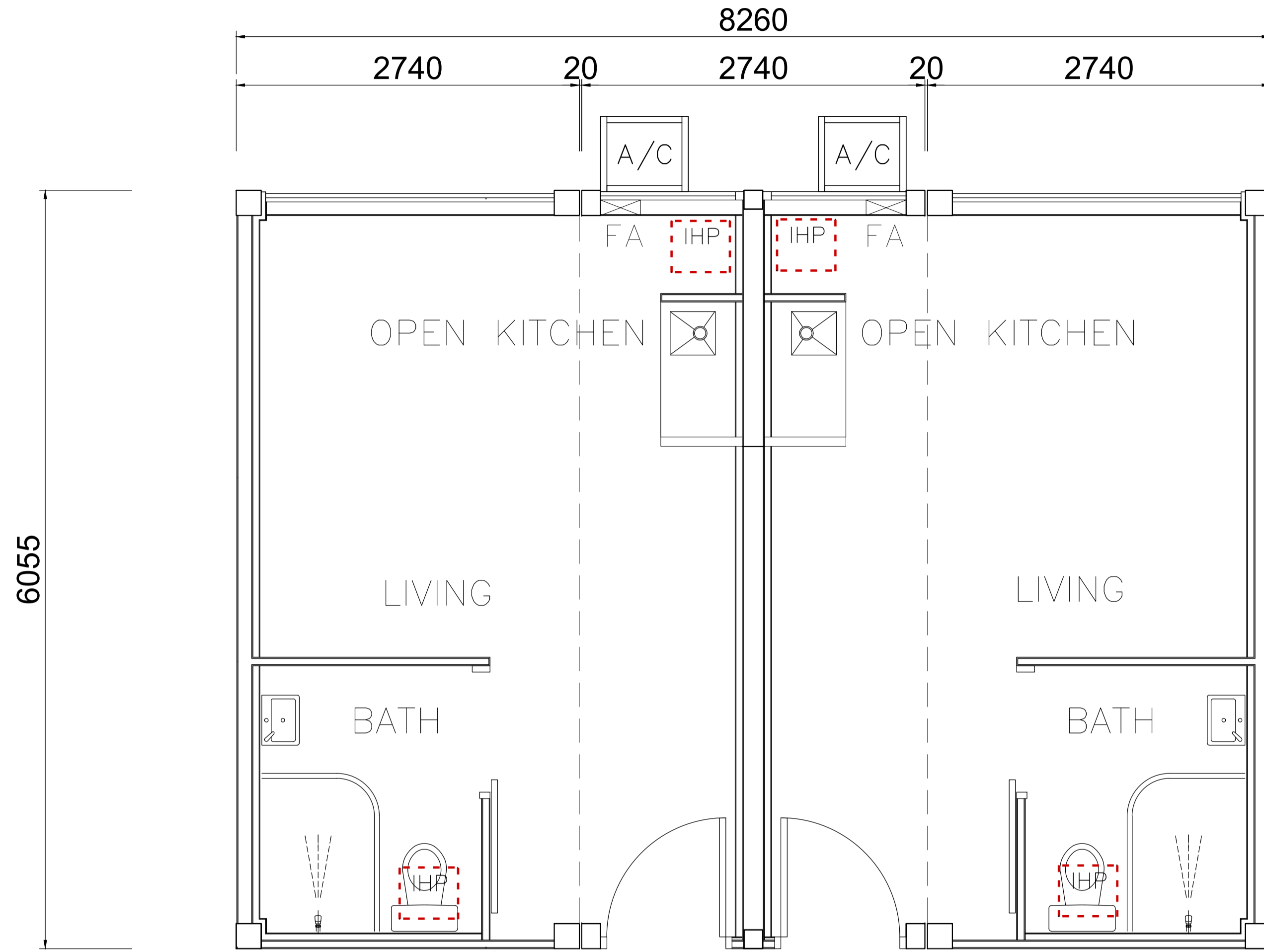
MODULE NO.:
TCJ-S01 /
TCJ-S01A

MODULE NO.:
TCJ-S02

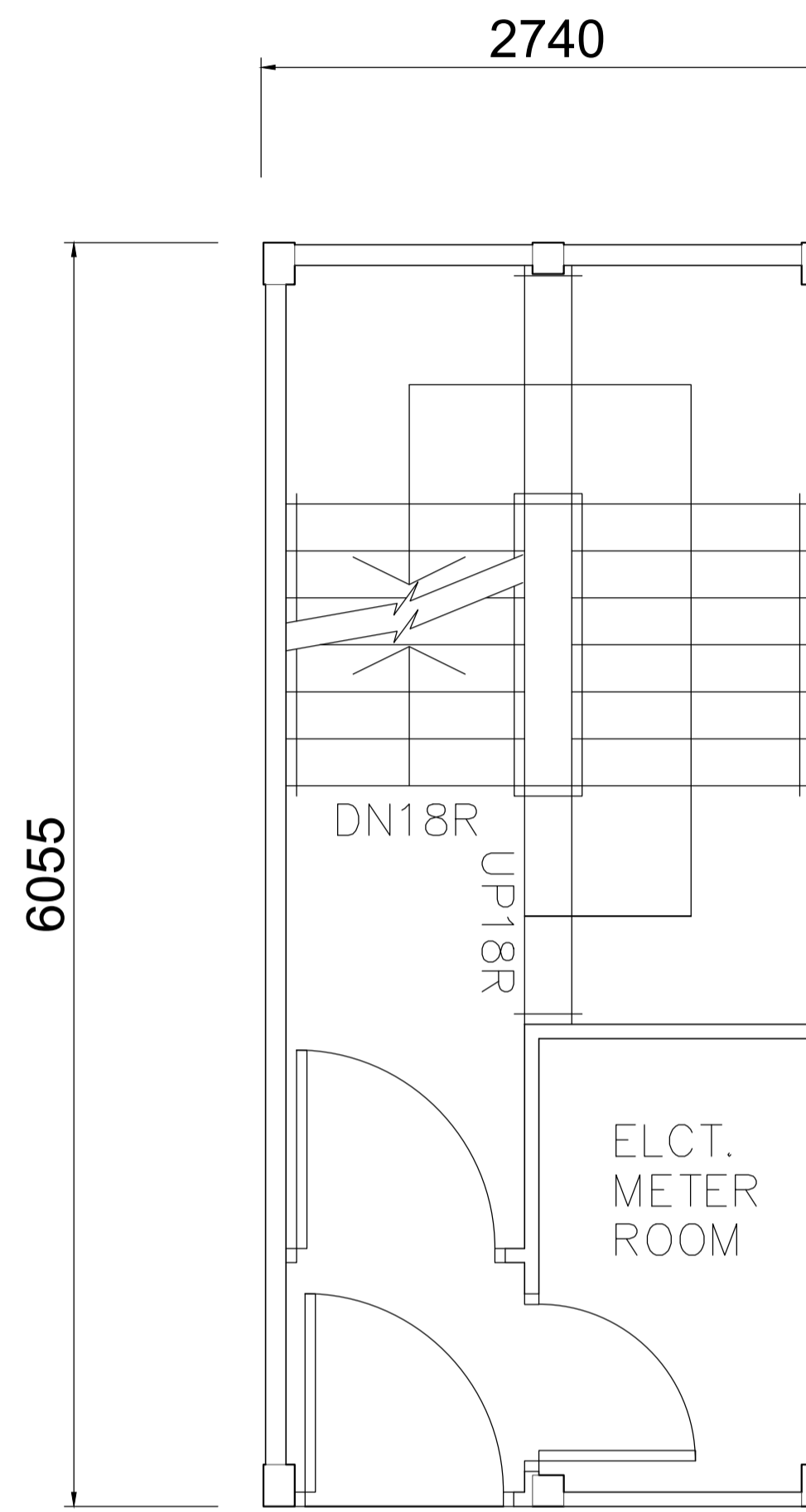
MODULE NO.:
TCJ-S01R

MODULE NO.:
TCJ-S03

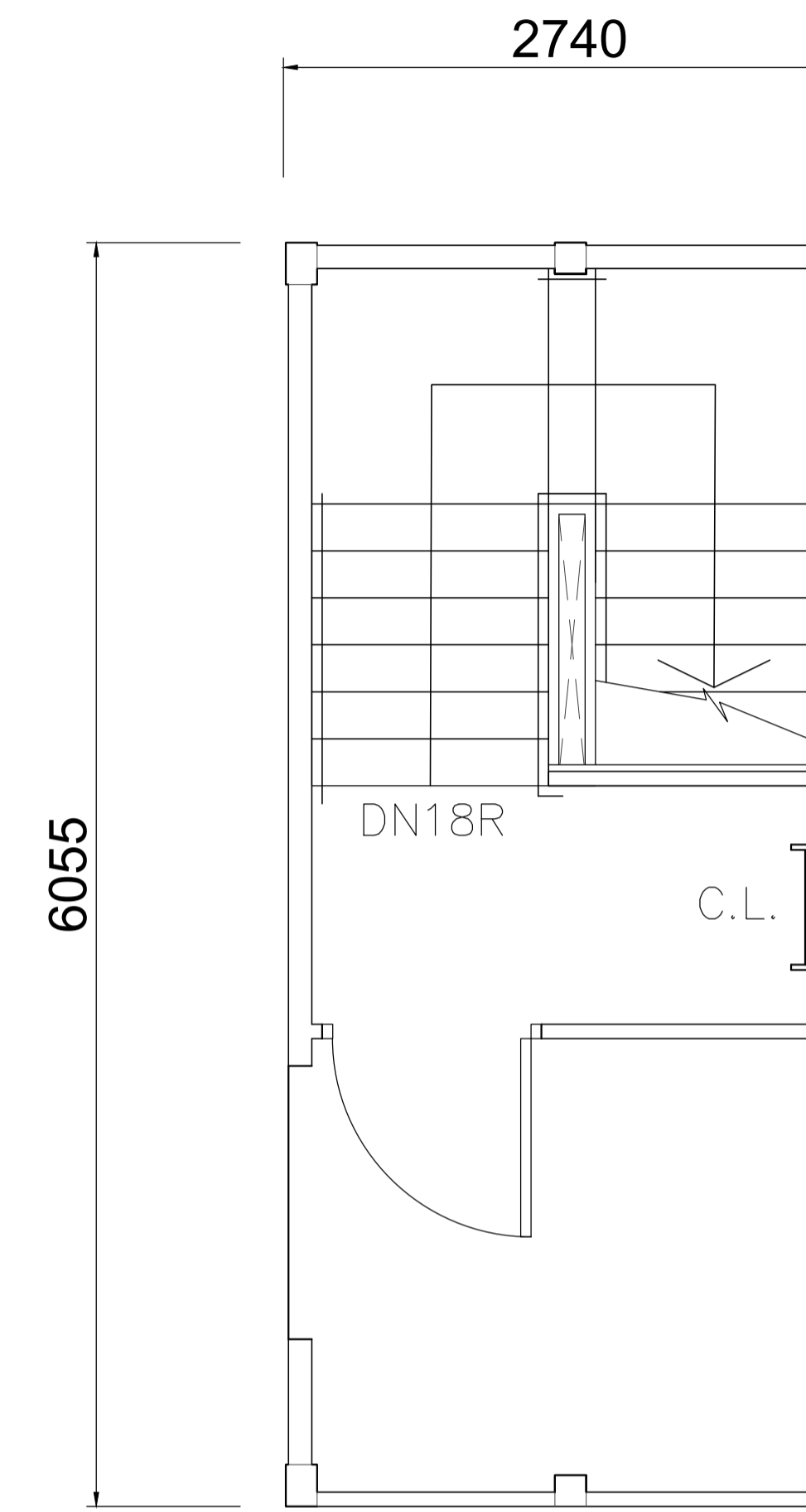
MODULE NO.:
TCJ-S04



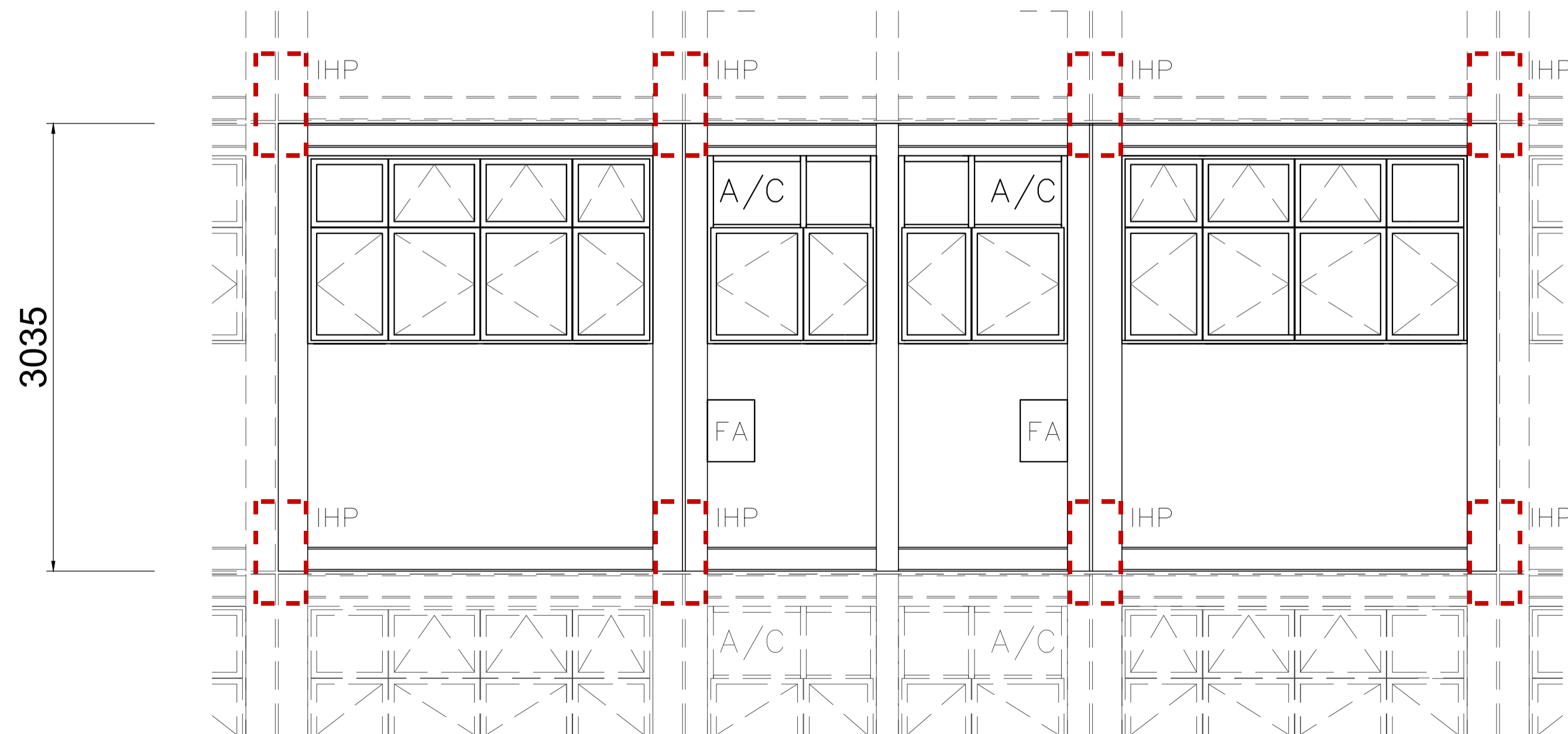
TYPICAL MODULE PLAN
(TCJ-S01 / TCJ-S01A / TCJ-S02 / TCJ-S01R)



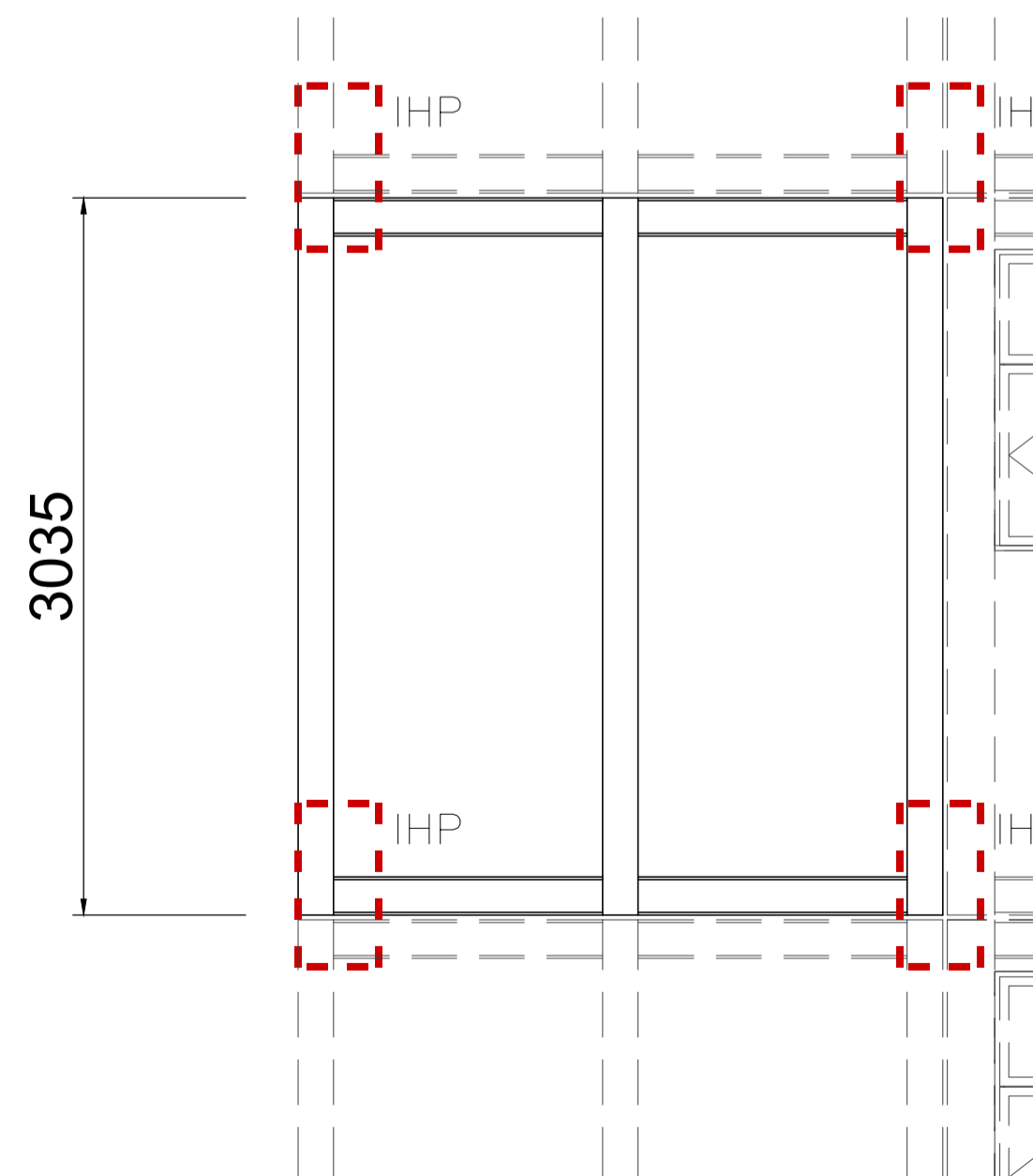
TYPICAL MODULE PLAN
(TCJ-S03)



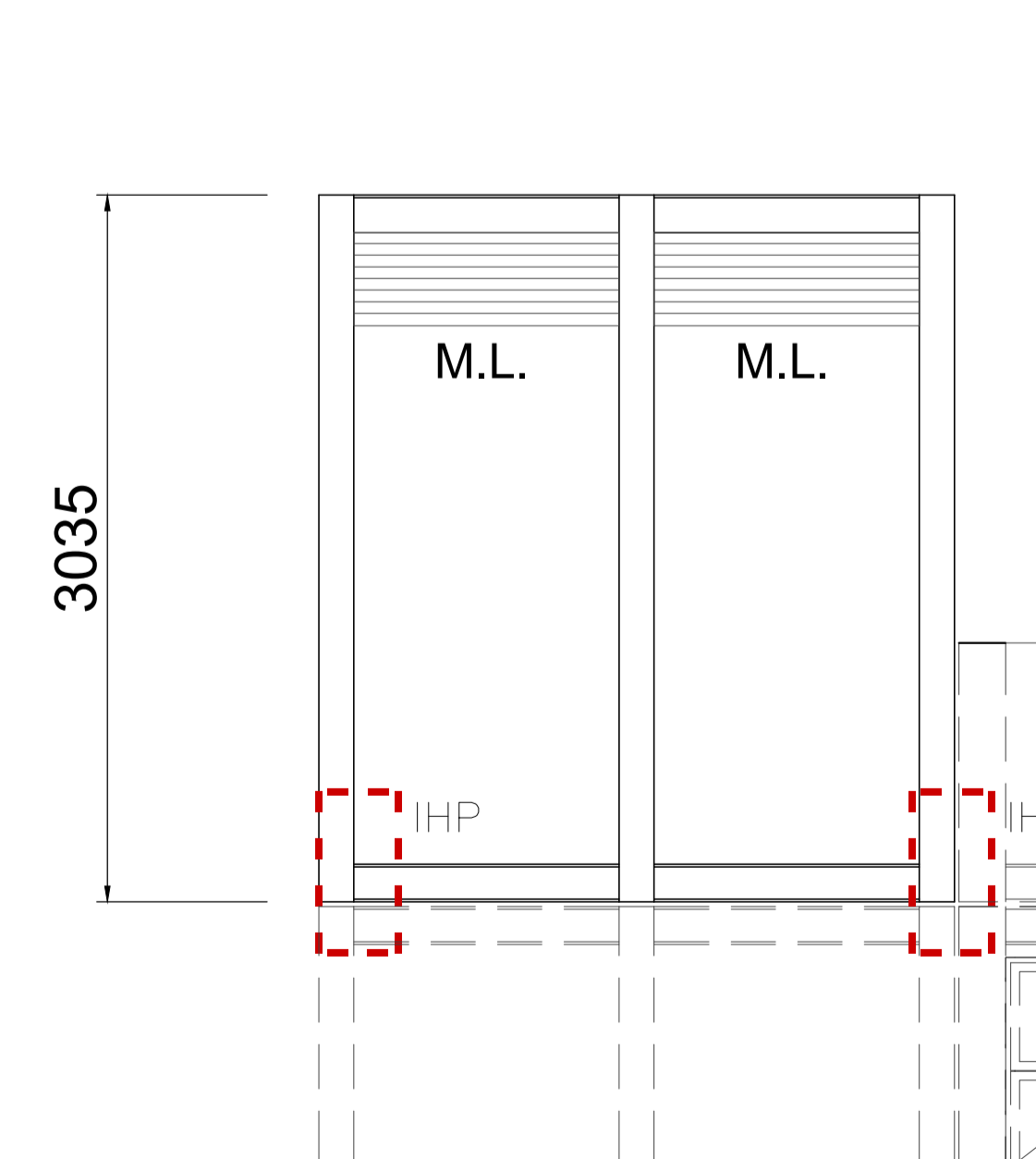
TYPICAL MODULE PLAN
(TCJ-S04)



ELEVATION A



ELEVATION B



ELEVATION C

B.D. REF.
F.S.D. REF.
NOTES:
1. DO NOT SCALE THIS DRAWING.
2. FIGURED DIMENSIONS ARE TO BE FOLLOWED.
3. READ THIS DRAWING IN CONJUNCTION WITH THE ARCHITECT'S SPECIFICATION & CONDITION OF CONTRACT.
4. THIS DRAWING SHALL NOT BE USED FOR CONSTRUCTION PURPOSES UNLESS OTHERWISE CERTIFIED.
5. THIS DRAWING AND DESIGN ARE SUBJECT TO COPYRIGHT AND NO PORTION CAN BE REPRODUCED WITHOUT THE CONSENT PERMISSION OF THE ARCHITECT.

REV.	DATE	DESCRIPTION

華豐建築有限公司
CR CONSTRUCTION CO. LTD.
LEVEL 32, STANDARD CHARTERED TOWER OF MILLENNIUM CITY 1,
NO.388 KWUN TONG ROAD, KOWLOON, HONG KONG TEL: 2828 1515
FAX: 2827 2921

Techoy.
BUILD FOR MORE 德材
2/F, CENTRE 600, 82 KING LAM STREET, LAI CHI KOK, KOWLOON,
HONG KONG TEL: 2529 9333 FAX: 2529 9898

德材路華
NOVA TECHOY
組裝合成建築有限公司
Modular Construction Co. Ltd.
2/F, CENTRE 600, 82 KING LAM STREET, LAI CHI KOK, KOWLOON,
HONG KONG TEL: 2529 9333 FAX: 2529 9898

JM & Associates Ltd.
FLAT B1, 3/F., HANG FUNG INDUSTRIAL BUILDING 1, 20 HOK YUEN
STREET, HUNGHOM TEL: 3689-1601 FAX: 3689-1603

WILSON & ASSOCIATES LIMITED
ROOM 1805, NEW TECH PLAZA, 34 TAI YAU STREET
TEL: 3619-0932 FAX: 3619-0931

MECS
CONSULTING ENGINEERS
2/F, NORTH-SIDE COMMERCE BUILDING,
388 KING'S ROAD, NORTH POIN, HONG KONG
TEL: 2318 8833 FAX: 2318 3168
E-MAIL: MECS@MECS.COM.HK

PROJECT:
MODULAR INTEGRATED CONSTRUCTION (MIC)
Medium-Rise Building in Steel MIC
(Model No.: NTMCLHK02B20)

DRAWING TITLE:
Typical Module Plan and Elevation
Type: TCJ-S01, S01A, S02, S01R,
S03 & S04

DRAWN BY Ka Po	SCALE 1:30 (A1)
CHECKED BY JM	DATE 2020.06.19
JOB No. A-1920	DWG NO. NTMCLHK02B20
	REVISION

BD'S OFFICIAL USE