

1. DESIGN REFERENCE

- a. CODE OF PRACTICE FOR STRUCTURAL USE OF STEEL, 2011, B.D. H.K.
- b. CODE OF PRACTICE FOR STRUCTURAL USE OF GLASS, 2018, B.D. H.K.
- c. CODE OF PRACTICE ON WIND EFFECTS IN HONG KONG 2019, B.D. H.K.
- d. CODE OF PRACTICE FOR STRUCTURAL USE OF CONCRETE 2013, B.D. H.K.
- e. CODE OF PRACTICE FOR STRUCTURAL USE OF ALUMINIUM BS8118:1991
- f. BRITISH STANDARD - STRUCTURAL USE OF ALUMINIUM BS8118:1991
- g. BUILDING (CONSTRUCTION) REGULATIONS
- h. STRUCTURAL DESIGN OF STAINLESS STEEL (SCI PUBLICATION 291)

2. GLASS:

- a. TP10+12A+TP10mm SILVER GREY GLASS PANEL GLASS WITH LOW-E COATING ON SURFACE (GL-01)
- b. DEFLECTION LIMIT : SPAN/60  
PERMISSIBLE STRESS OF TEMPERED GLASS = 50 N/mm<sup>2</sup>  
YOUNG'S MODULUS, E = 73 kN/mm<sup>2</sup>  
DENSITY OF GLASS = 2600 kg/m<sup>3</sup>
- c. GASKETS : DENSE : NEOPRENE - 60 ; 5 DURO - FOR SOLD PROFILES  
- 75 ; 5 DURO - FOR HOLLOW PROFILES
- d. SETTING BLOCKS : NEOPRENE (DURO)  
150mm LONG AT QUARTER POINT OF GLASS
- e. 100% HEAT SOAK TESTING FOR ALL TEMPERED GLASS  
THE QUALITY CONTROL ON THE FABRICATION OF INSULATED GLASS UNIT SHOULD STRICTLY FOLLOW TAE RECOMMENDATION OF ASTM E773.
- f. ALL GLASS PANEL COMPLY TO B.S. 952

3. DESIGN CRITERIA

- a. -WIND LOAD  
THE BASIC DESIGN PRESSURE : 2.37 kPa  
TOPOGRAPHY FACTOR, S<sub>a</sub> = 1.3  
2.37 x 1.0 x 1.3 = 3.08 kPa (COMPRESSION)  
2.37 x 1.4 x 1.3 = 4.31 kPa (SUCTION)  
- IMPACT LOAD  
- 3kN/m AT 1.1m ABOVE FFL.  
- UDL LOAD = 1.5 kN/m<sup>2</sup>  
- POINT LOAD = 1.5kN

b. CONCRETE

- MINIMUM COMPRESSIVE f<sub>c</sub>' = 60 MPa AT 28 DAYS STRENGTH

4. STRUCTURAL STEEL FOR REFERENCE ONLY

- a. B.S. EN. 10210 FOR STEEL HOLLOW GRADE S275 J0 CLASS 1.
- b. B.S. EN. 10025 FOR OTHER STRUCTURAL STEEL GRADE S275 J0 CLASS 1.
- c. ALL MILD STEEL BRACKETS TO BE SECURED BY WELDING TO B.S. EN. 1011  
ALL FILLET WELD TO BE 4mm THK, UNLESS OTHERWISE STATED.
- d. MAKE GOOD DAMAGE TO ZINC COATINGS AND GALVANISING, TREAT CUT ENDS OF GALVANISED SECTIONS WITH TWO COATS OF METALLIC ZINC-RICH PRIMING
- e. ALL STRUCTURAL MILD STEEL WORKS AND BRACKETS, ETC. FOR FIXINGS SHALL BE HOT-DIP GALVANIZING OF ZNC PAINT TO B.S. 4652:1995  
COMPLYING WITH B.S. E.N. ISO 1461 WITH 85 MICRONS THICKNESS.

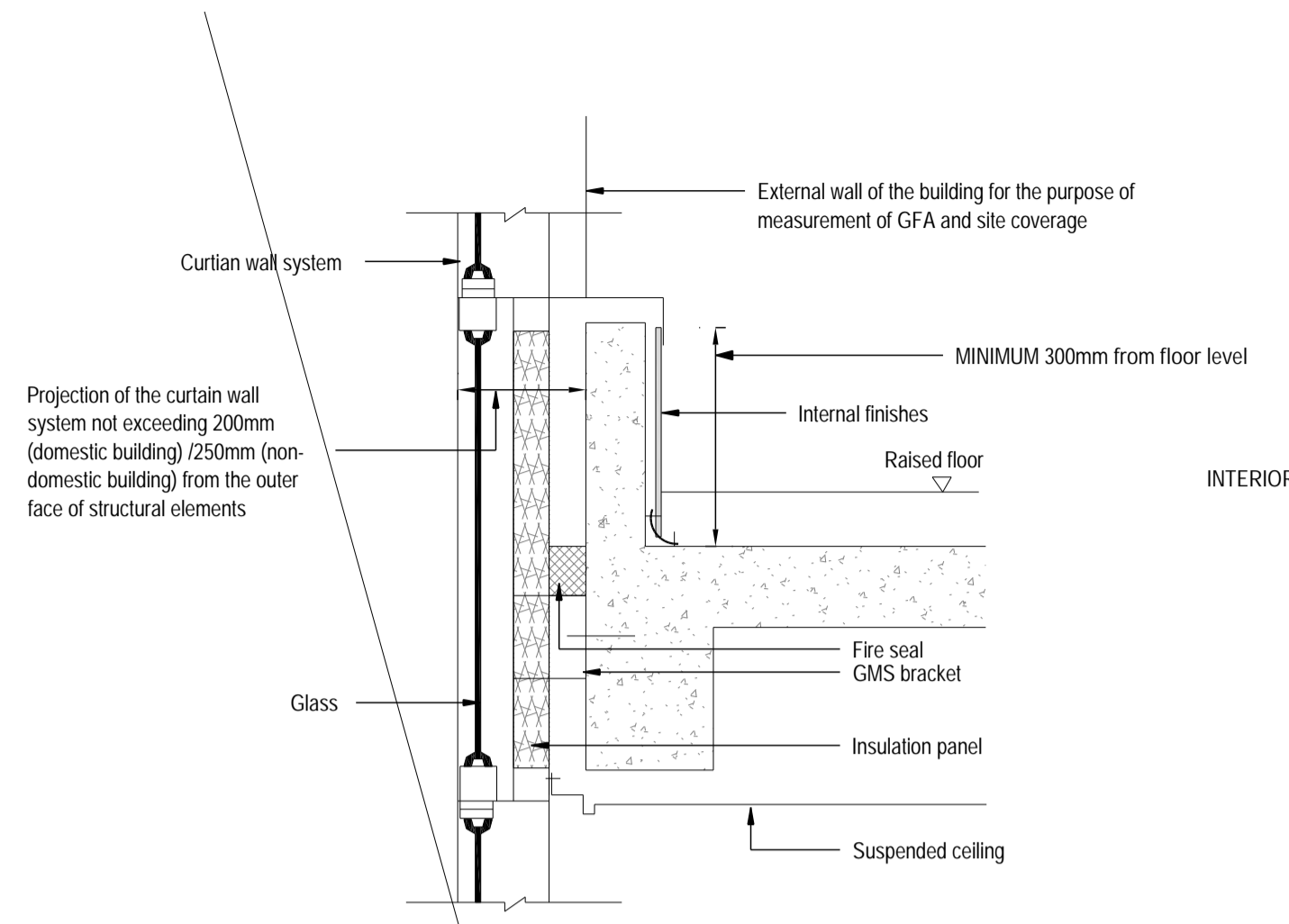
5. ANCHOR BOLT

- 1) THE INSTALLATION OF ANCHOR BOLTS SHALL STRICTLY IN ACCORDANCE WITH THE MANUFACTURER'S SPECIFICATIONS
- 2) THE MINIMUM EMBEDMENT, SPACING & EDGE DISTANCE FOR THE VARIOUS TYPES OF ANCHOR BOLTS USED ARE AS FOLLOWS:

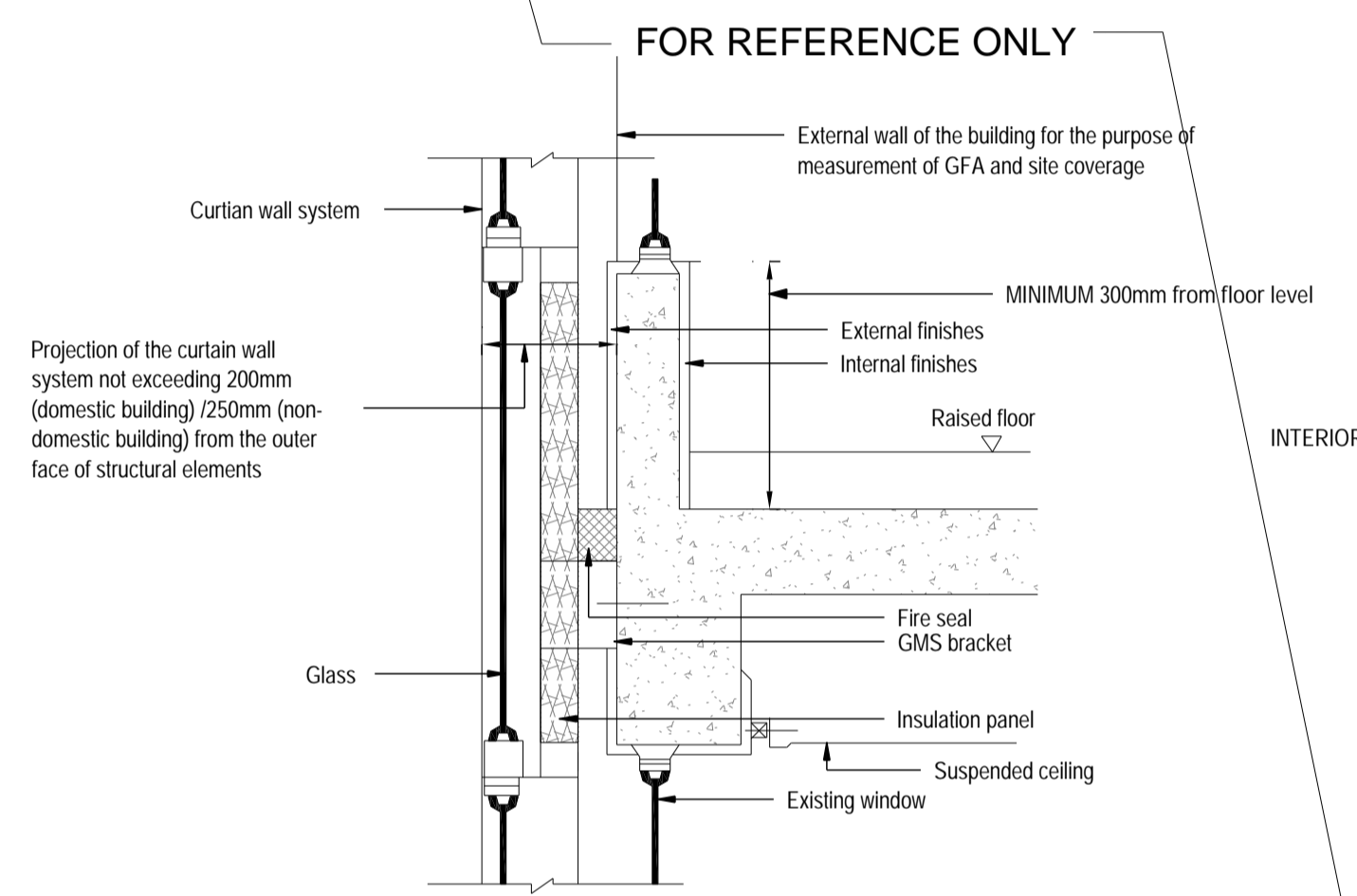
BD REFERENCE NO.	'H/LT' 'H/S'30R'	MIN. SPACING	MIN. EDGE DISTANCE	EFFECTIVE EMBEDMENT LENGTH	BASE MATERIAL THICKNESS	TENSILE (kN)	SHEAR (kN)	TEST LOAD (kN) TENSILEx1.5

6. ALLOWABLE TOLERANCE:

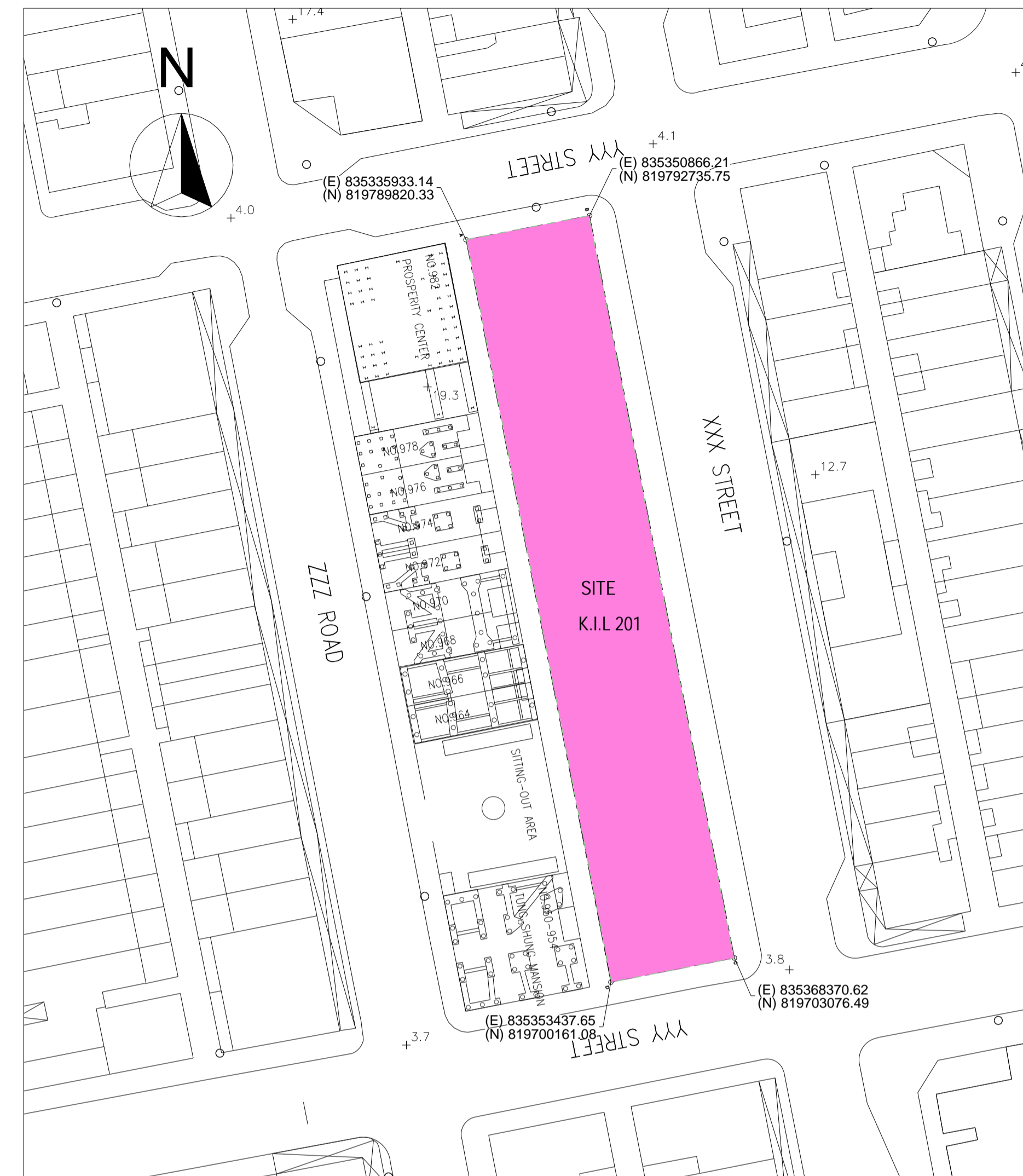
ALLOWABLE TOLERANCE OF THE POSITIONING OF WINDOW SUPPORTS AND ARRANGEMENTS IS 75mm



Section of Curtain Wall System installed at New Building



Section of Curtain Wall System installed at Existing Building



BLOCK PLAN  
1:500

BD REF :

BIM REF :

REV DATE AMENDMENT

PROJECT  
CIC SAMPLE PROJECT

DRAWING TITLE  
CURTAIN WALL GENERAL NOTES

SCALE AS SHOWN@A1

DRAWING NO. REV. NO.

C001

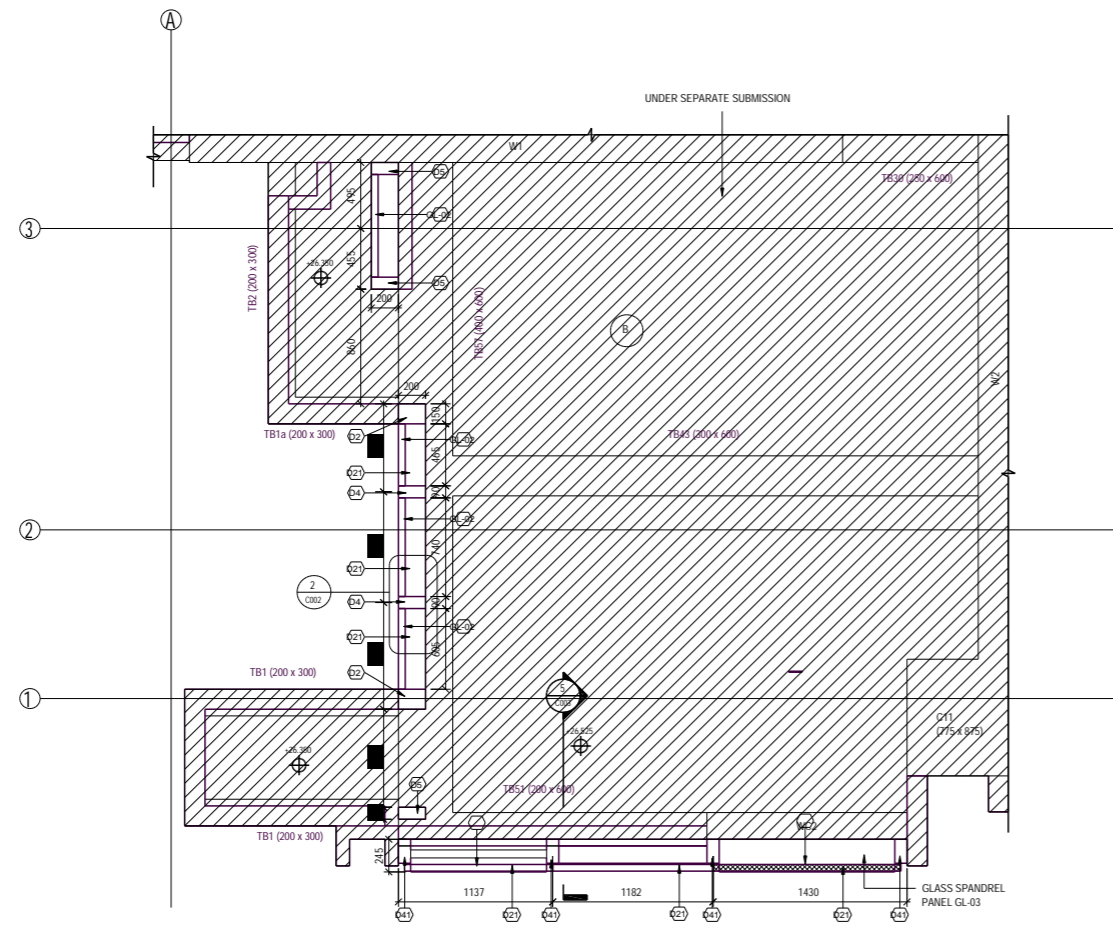
SOURCE ---

90mm (W) x 40mm (H) space  
for COMPANY LOGO

90mm (W) x 60mm (H) space  
for AP/RSE/RGE's  
signature/ and stamp chop

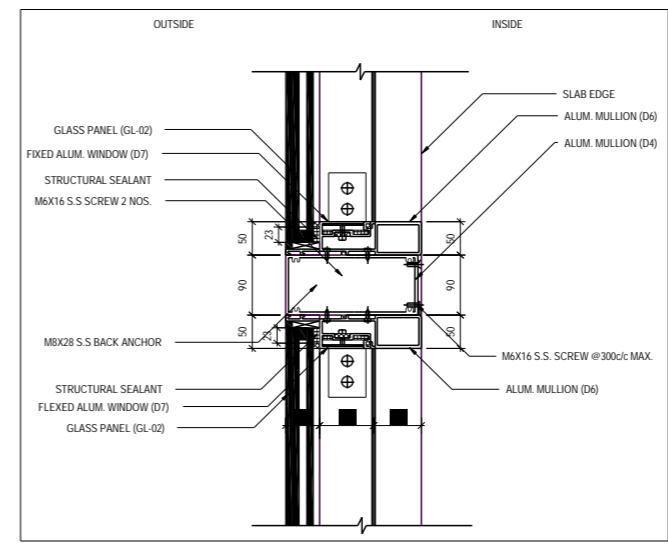
BD's OFFICAL USE

90mm (W) x 150mm (H) space  
for BD's approval stamp /  
certification of copies of  
approved plans  
(PNAP ADM-10 APP A)



1 5/F CURTAIN WALL LAYOUT PART PLAN (FLAT B)  
1 : 25

NOTES:  
1. ALL CONCRETE ELEMENTS ARE UNDER SEPARATED SUBMISSION



2 TYPICAL MULLION FIXING DETAIL  
1 : 5

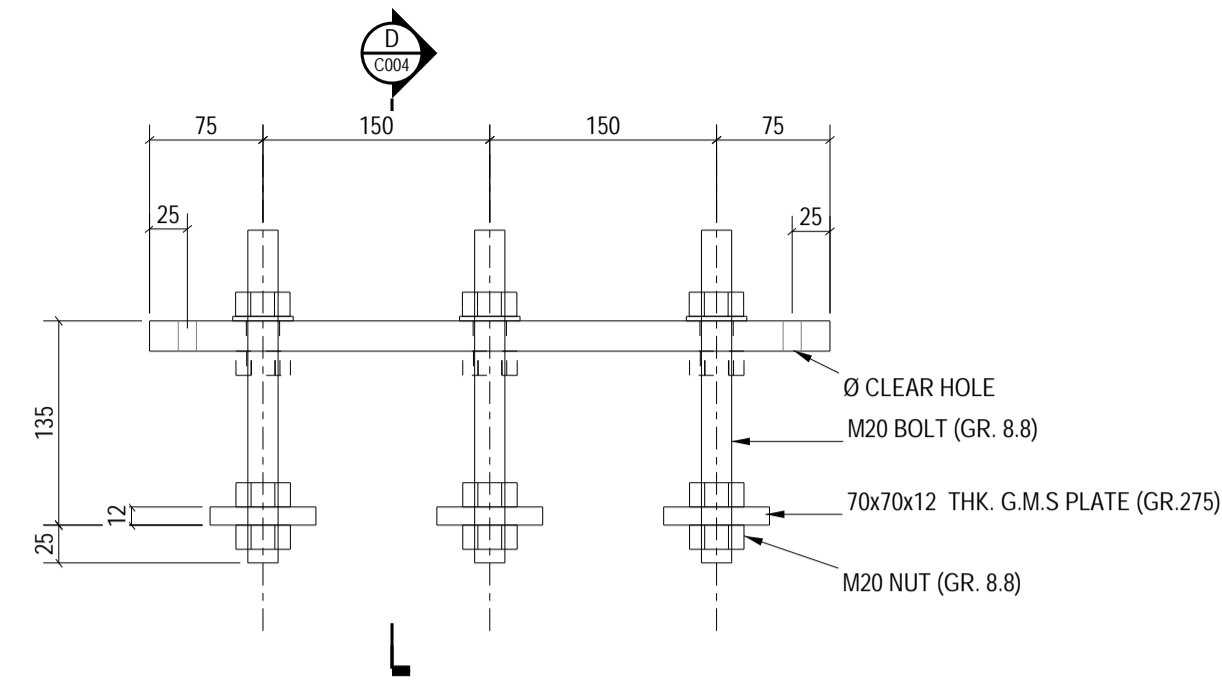
BD REF :		
BIM REF :		
REV	DATE	AMENDMENT
PROJECT CIC SAMPLE PROJECT		
DRAWING TITLE CURTAIN WALL LAYOUT PART PLAN		
SCALE		
DRAWING NO.	REV. NO.	
C002		
SOURCE ---		
90mm (W) x 40mm (H) space for COMPANY LOGO		
90mm (W) x 60mm (H) space for AP/SEALER'S signature/ and stamp chop		
BD'S OFFICAL USE		
90mm (W) x 150mm (H) space for BD's approval stamp / certification of copies of approved plans (PNAP ADM-10 APP A)		

This is an example of demonstrating the presentation of drawings generated from BIM according to the Standard and User Guides ONLY. It does NOT represent the completeness of Submission Drawings under BD's approval requirement of Statutory Plans. The BD approval requirements should refer to other relevant references and remain unchanged no matter whether BIM is used or not used for the preparation of Statutory Plans.

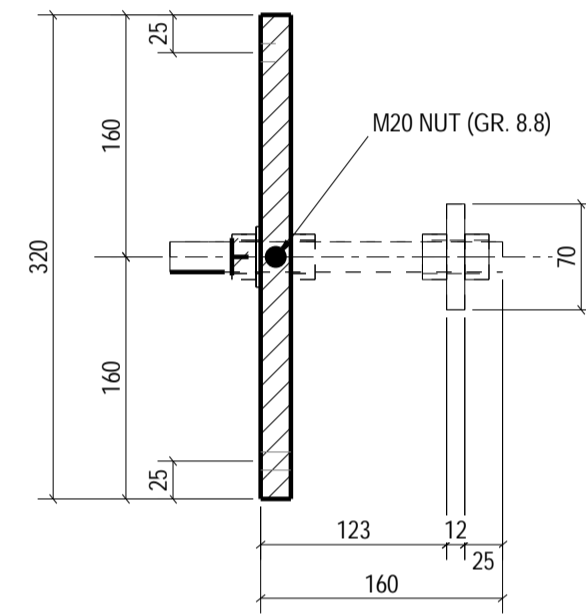


UNFACTORED FORCES FOR CAST-IN EMBED TYPE E2		
	D.L.	W.L.
F <sub>x</sub> (kN)	0	0
F <sub>y</sub> (kN)	0	39.5
F <sub>z</sub> (kN)	-14	0
M <sub>x</sub> (kNm)	0.9	2
M <sub>y</sub> (kNm)	0	0
M <sub>z</sub> (kNm)	0	0

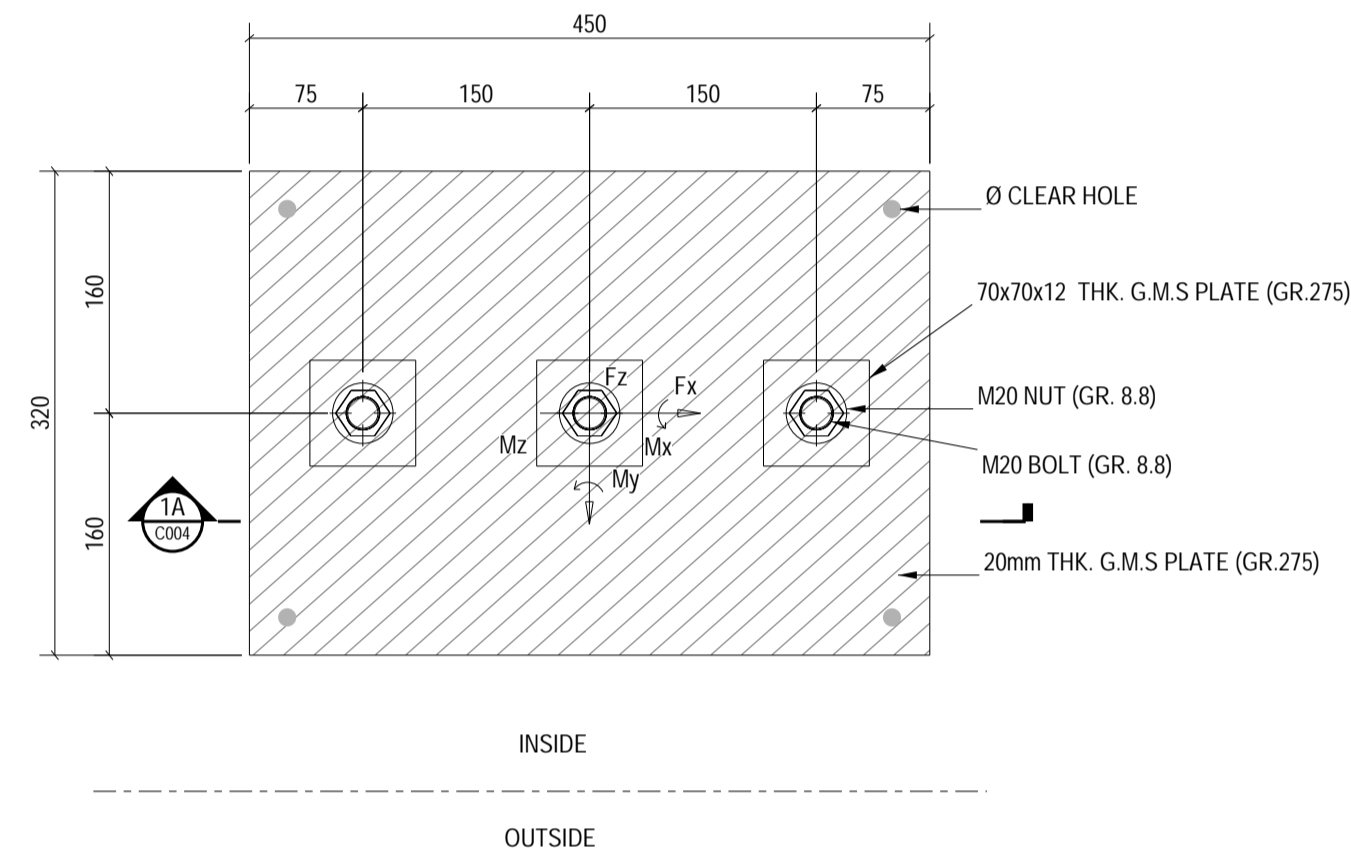
\*(W.L.) WIND LOAD ARE REVERSIBLE



1A PLAN VIEW CAST-IN EMBED TYPE E2  
1:5



D SIDE VIEW CAST-IN EMBED TYPE E2  
1:5



1 PLAN VIEW CAST-IN EMBED TYPE E2  
1:5

BD REF :

BIM REF :

REV DATE AMENDMENT

PROJECT  
CIC SAMPLE PROJECT

DRAWING TITLE  
DETAIL OF EMBED AND MEMBER  
SECTION

SCALE AS SHOWN@A1

DRAWING NO. REV. NO.

C004

SOURCE ---

90mm (W) x 40mm (H) space  
for COMPANY LOGO

90mm (W) x 60mm (H) space  
for AP/RSE/RGE's  
signature/ and stamp chop



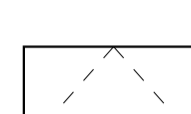
BD's OFFICAL USE

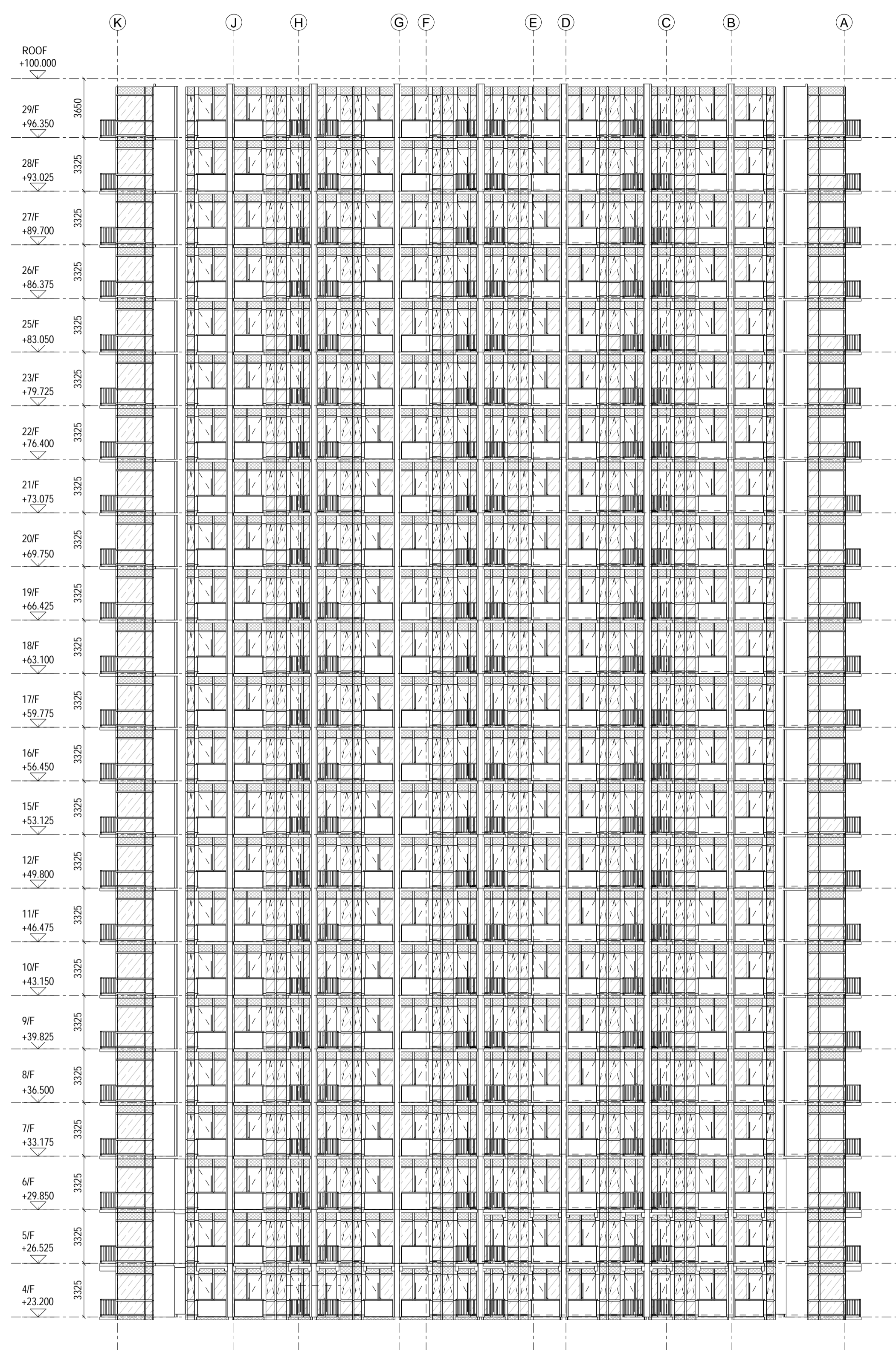
90mm (W) x 150mm (H) space  
for BD's approval stamp /  
certification of copies of  
approved plans  
(PNAP ADM-10 APP A)

BD REF :

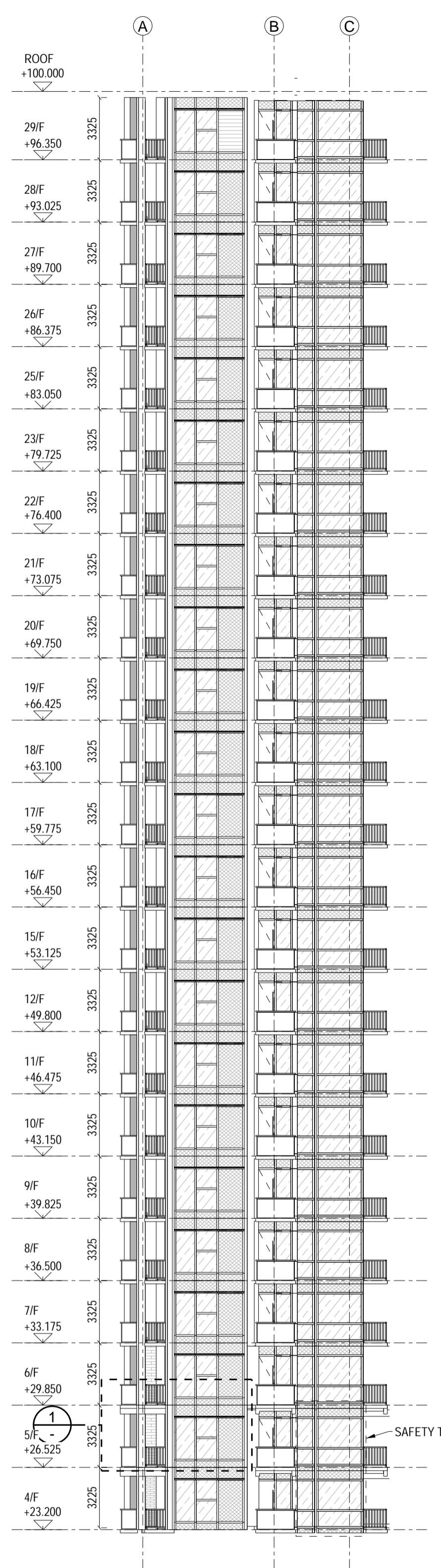
BIM REF :

LEGEND:

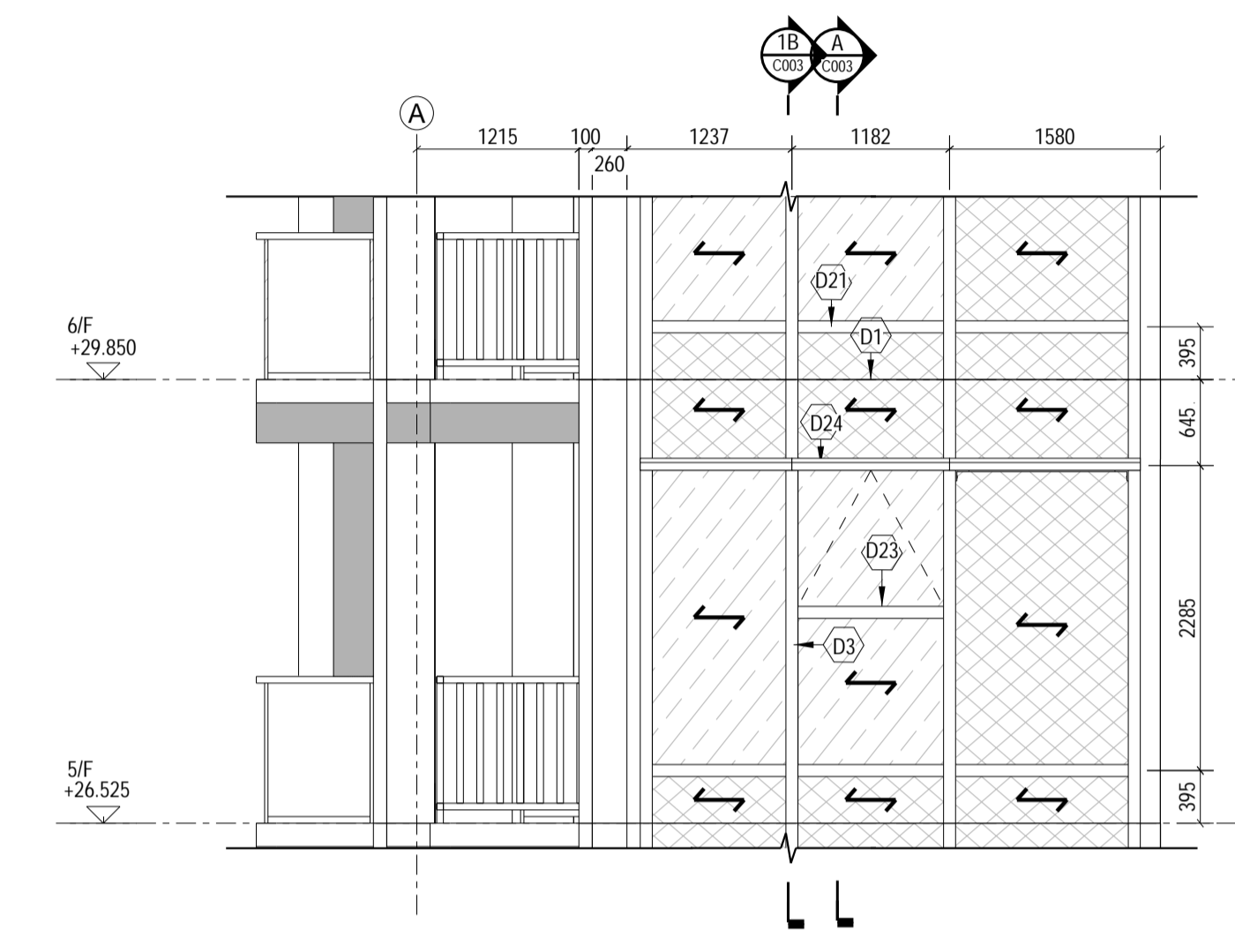
-  TP10+12A-TP100mm SILVER GREY GLASS PANEL  
GLASS W/LOW-E COATING ON SURFACE (GL-01)
-  GLASS SPANDREL PANEL (GL-03)
-  OPENABLE WINDOW



1 ELEVATION 1  
1:200



2 ELEVATION 2  
1:200



1 PARTIAL ELEVATION  
1:50

REV DATE AMENDMENT

PROJECT  
CIC SAMPLE PROJECT

DRAWING TITLE  
CURTAIN WALL ELEVATIONS AND SECTIONS

SCALE AS SHOWN@A1

DRAWING NO. C005 REV. NO.

SOURCE ---

90mm (W) x 40mm (H) space  
for COMPANY LOGO

90mm (W) x 60mm (H) space  
for AP/RSE/RGE's  
signature/ and stamp chop

BD's OFFICAL USE

90mm (W) x 150mm (H) space  
for BD's approval stamp /  
certification of copies of  
approved plans  
(PNAP ADM-10 APP A)

This is an example of demonstrating the presentation of drawings generated from BIM according to the Standard and User Guides ONLY. It does NOT represent the completeness of Submission Drawings under BD's approval requirement of Statutory Plans. The BD approval requirements should refer to other relevant references and remain unchanged no matter whether BIM is used or not used for the preparation of Statutory Plans.