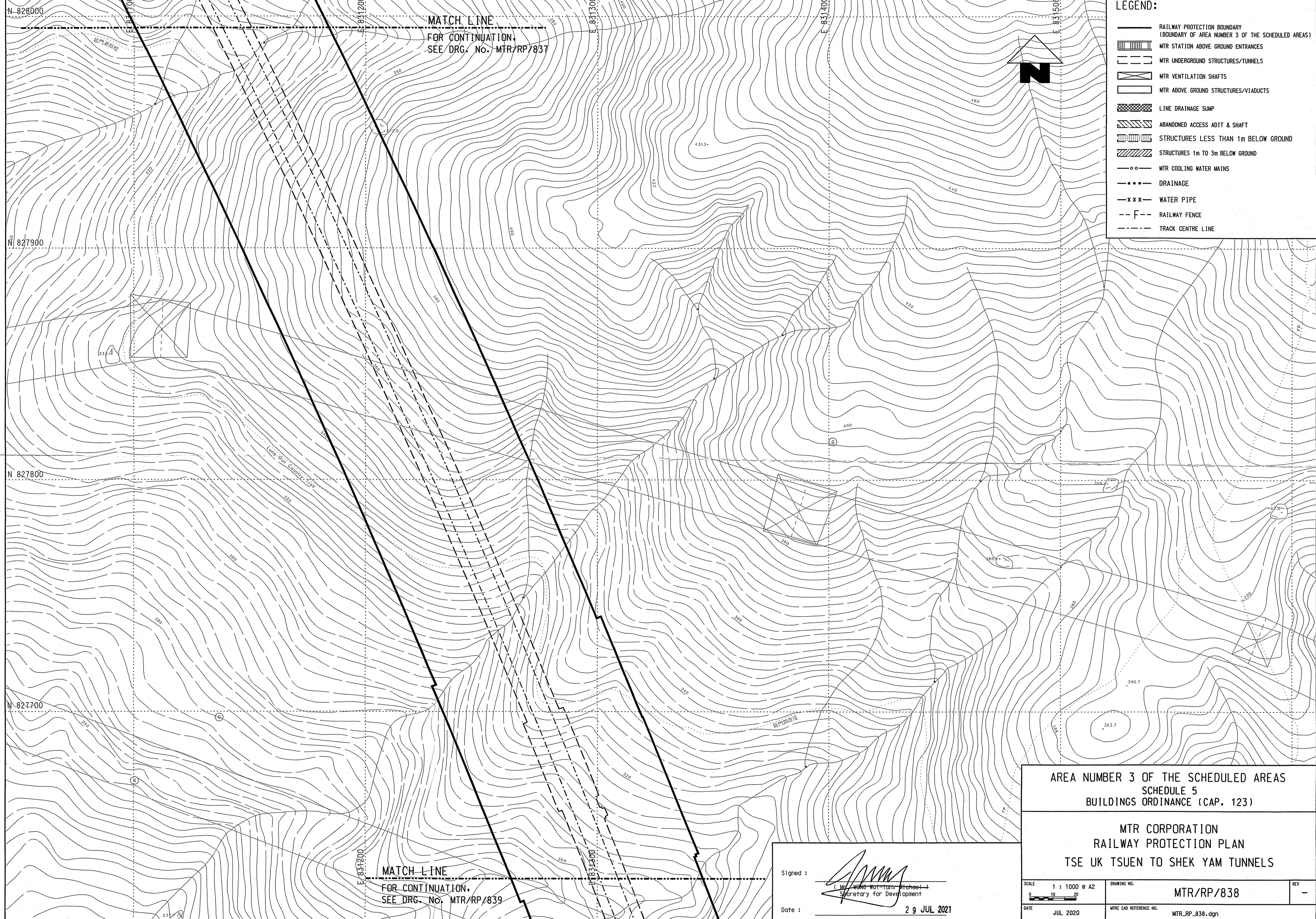
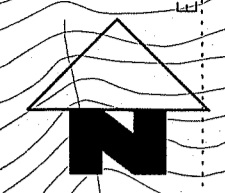


MATCH LINE
FOR CONTINUATION.
SEE DRG. NO. MTR/RP/837

LEGEND:

| | |
|--|--|
| | RAILWAY PROTECTION BOUNDARY (BOUNDARY OF AREA NUMBER 3 OF THE SCHEDULED AREAS) |
| | MTR STATION ABOVE GROUND ENTRANCES |
| | MTR UNDERGROUND STRUCTURES/TUNNELS |
| | MTR VENTILATION SHAFTS |
| | MTR ABOVE GROUND STRUCTURES/VIADUCTS |
| | LINE DRAINAGE SUMP |
| | ABANDONED ACCESS ADIT & SHAFT |
| | STRUCTURES LESS THAN 1m BELOW GROUND |
| | STRUCTURES 1m TO 3m BELOW GROUND |
| | MTR COOLING WATER MAINS |
| | DRAINAGE |
| | WATER PIPE |
| | RAILWAY FENCE |
| | TRACK CENTRE LINE |



MATCH LINE
FOR CONTINUATION.
SEE DRG. NO. MTR/RP/839

| | | |
|---|---|----------|
| AREA NUMBER 3 OF THE SCHEDULED AREAS SCHEDULE 5 BUILDINGS ORDINANCE (CAP. 123) | | |
| MTR CORPORATION RAILWAY PROTECTION PLAN TSE UK TSUEN TO SHEK YAM TUNNELS | | |
| SCALE 1 : 1000 @ A2 | DRAWING NO. MTR/RP/838 | REV - |
| DATE JUL 2020 | MTR/CAD REFERENCE NO. MTR_RP_838.dgn | |

Signed:
 (Mr. Wong Wai-tun, Michael)
 Secretary for Development
 Date: 29 JUL 2021