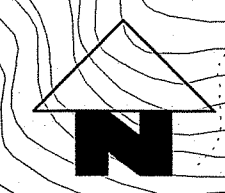


MATCH LINE  
FOR CONTINUATION,  
SEE DRG. No. MTR/RP/815

MATCH LINE  
FOR CONTINUATION,  
SEE DRG. No. MTR/RP/817

- LEGEND:**
- RAILWAY PROTECTION BOUNDARY (BOUNDARY OF AREA NUMBER 3 OF THE SCHEDULED AREAS)
  - ▬ MTR STATION ABOVE GROUND ENTRANCES
  - ▬ MTR UNDERGROUND STRUCTURES/TUNNELS
  - ▬ MTR VENTILATION SHAFTS
  - ▬ MTR ABOVE GROUND STRUCTURES/VIADUCTS
  - ▬ LINE DRAINAGE SUMP
  - ▬ ABANDONED ACCESS ADIT & SHAFT
  - ▬ STRUCTURES LESS THAN 1m BELOW GROUND
  - ▬ STRUCTURES 1m TO 3m BELOW GROUND
  - MTR COOLING WATER MAINS
  - DRAINAGE
  - xxx— WATER PIPE
  - F— RAILWAY FENCE
  - — — TRACK CENTRE LINE



AREA NUMBER 3 OF THE SCHEDULED AREAS  
SCHEDULE 5  
BUILDINGS ORDINANCE (CAP. 123)

MTR CORPORATION  
RAILWAY PROTECTION PLAN  
NGAU TAM MEI TO TAI KONG PO

Signed: *[Signature]*  
Mr. HONG Wai-lun, Michael  
Secretary for Development  
Date: 29 JUL 2021

SCALE 1 : 1000 @ A2	DRAWING NO. MTR/RP/816	REV —
DATE JUL 2020	MTRC CAD REFERENCE NO. MTR_RP_816.dgn	