

Maps reproduced with permission of The Director of Lands, (C) Hong Kong Government.

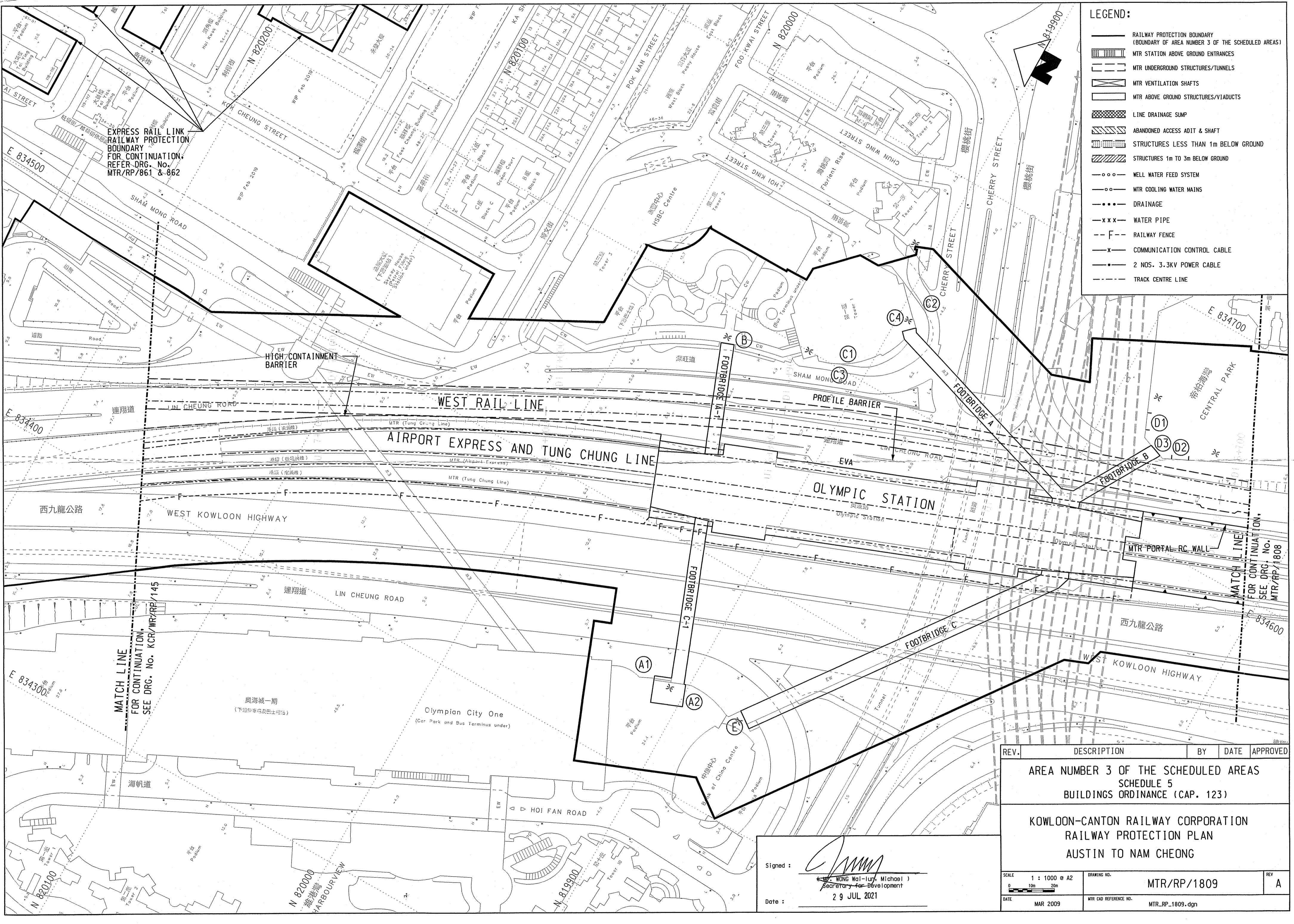
EXPRESS RAIL LINK
RAILWAY PROTECTION
BOUNDARY
FOR CONTINUATION,
REFER DRG. No.
MTR/RP/861 & 862

MATCH LINE
FOR CONTINUATION,
SEE DRG. No. KCR/WR/RP/145

MATCH LINE
FOR CONTINUATION,
SEE DRG. No.
MTR/RP/1808

LEGEND:

- RAILWAY PROTECTION BOUNDARY (BOUNDARY OF AREA NUMBER 3 OF THE SCHEDULED AREAS)
- MTR STATION ABOVE GROUND ENTRANCES
- MTR UNDERGROUND STRUCTURES/TUNNELS
- MTR VENTILATION SHAFTS
- MTR ABOVE GROUND STRUCTURES/VIADUCTS
- LINE DRAINAGE SUMP
- ABANDONED ACCESS ADIT & SHAFT
- STRUCTURES LESS THAN 1m BELOW GROUND
- STRUCTURES 1m TO 3m BELOW GROUND
- WELL WATER FEED SYSTEM
- MTR COOLING WATER MAINS
- DRAINAGE
- WATER PIPE
- RAILWAY FENCE
- COMMUNICATION CONTROL CABLE
- 2 NOS. 3.3KV POWER CABLE
- TRACK CENTRE LINE



| REV. | DESCRIPTION | BY | DATE | APPROVED |
|---|--|--|------|----------|
| | AREA NUMBER 3 OF THE SCHEDULED AREAS SCHEDULE 5 BUILDINGS ORDINANCE (CAP. 123) | | | |
| KOWLOON-CANTON RAILWAY CORPORATION RAILWAY PROTECTION PLAN AUSTIN TO NAM CHEONG | | | | |
| SCALE 1 : 1000 @ A2 0 10m 20m | | DRAWING NO. MTR/RP/1809 | | REV A |
| DATE MAR 2009 | | MTR CAD REFERENCE NO. MTR_RP_1809.dgn | | |

Signed:
WONG Wai-lun, Michael
Secretary for Development
Date: 29 JUL 2011