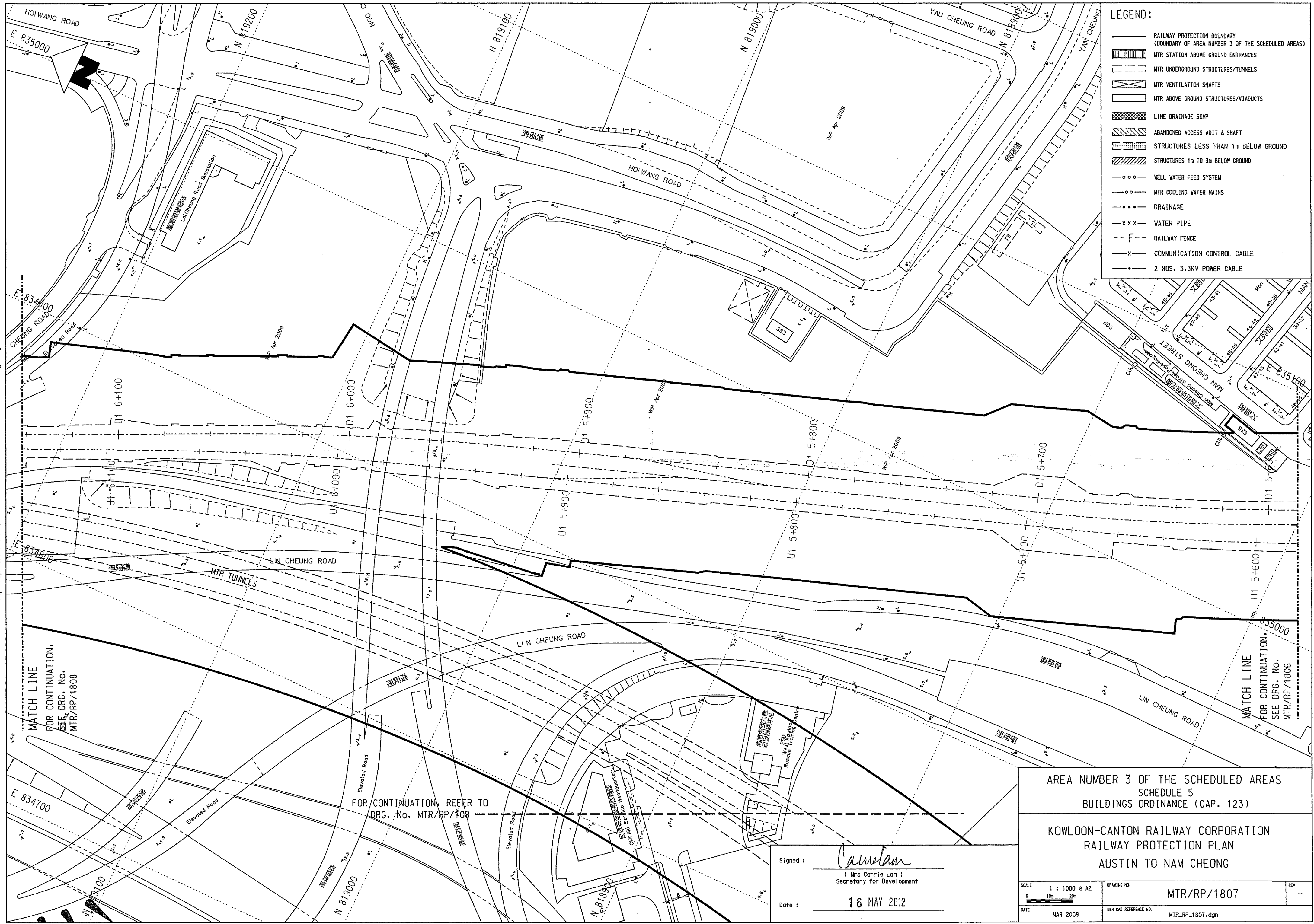


Maps reproduced with permission of The Director of Lands, (C) Hong Kong Government.



- LEGEND:**
- RAILWAY PROTECTION BOUNDARY (BOUNDARY OF AREA NUMBER 3 OF THE SCHEDULED AREAS)
  - MTR STATION ABOVE GROUND ENTRANCES
  - MTR UNDERGROUND STRUCTURES/TUNNELS
  - MTR VENTILATION SHAFTS
  - MTR ABOVE GROUND STRUCTURES/VIADUCTS
  - LINE DRAINAGE SUMP
  - ABANDONED ACCESS ADIT & SHAFT
  - STRUCTURES LESS THAN 1m BELOW GROUND
  - STRUCTURES 1m TO 3m BELOW GROUND
  - WELL WATER FEED SYSTEM
  - MTR COOLING WATER MAINS
  - DRAINAGE
  - WATER PIPE
  - RAILWAY FENCE
  - COMMUNICATION CONTROL CABLE
  - 2 NOS. 3.3KV POWER CABLE

MATCH LINE FOR CONTINUATION, SEE DRG. NO. MTR/RP/1808

MATCH LINE FOR CONTINUATION, SEE DRG. NO. MTR/RP/1806

FOR CONTINUATION, REFER TO DRG. No. MTR/RP/1808

AREA NUMBER 3 OF THE SCHEDULED AREAS  
SCHEDULE 5  
BUILDINGS ORDINANCE (CAP. 123)

KOWLOON-CANTON RAILWAY CORPORATION  
RAILWAY PROTECTION PLAN  
AUSTIN TO NAM CHEUNG

Signed: *Carrie Lam*  
(Mrs Carrie Lam)  
Secretary for Development

Date: 16 MAY 2012

SCALE 1 : 1000 @ A2  
DRAWING NO. MTR/RP/1807  
DATE MAR 2009  
MTR CAD REFERENCE NO. MTR\_RP\_1807.dgn