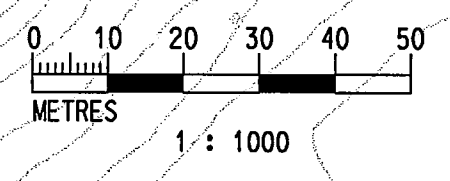
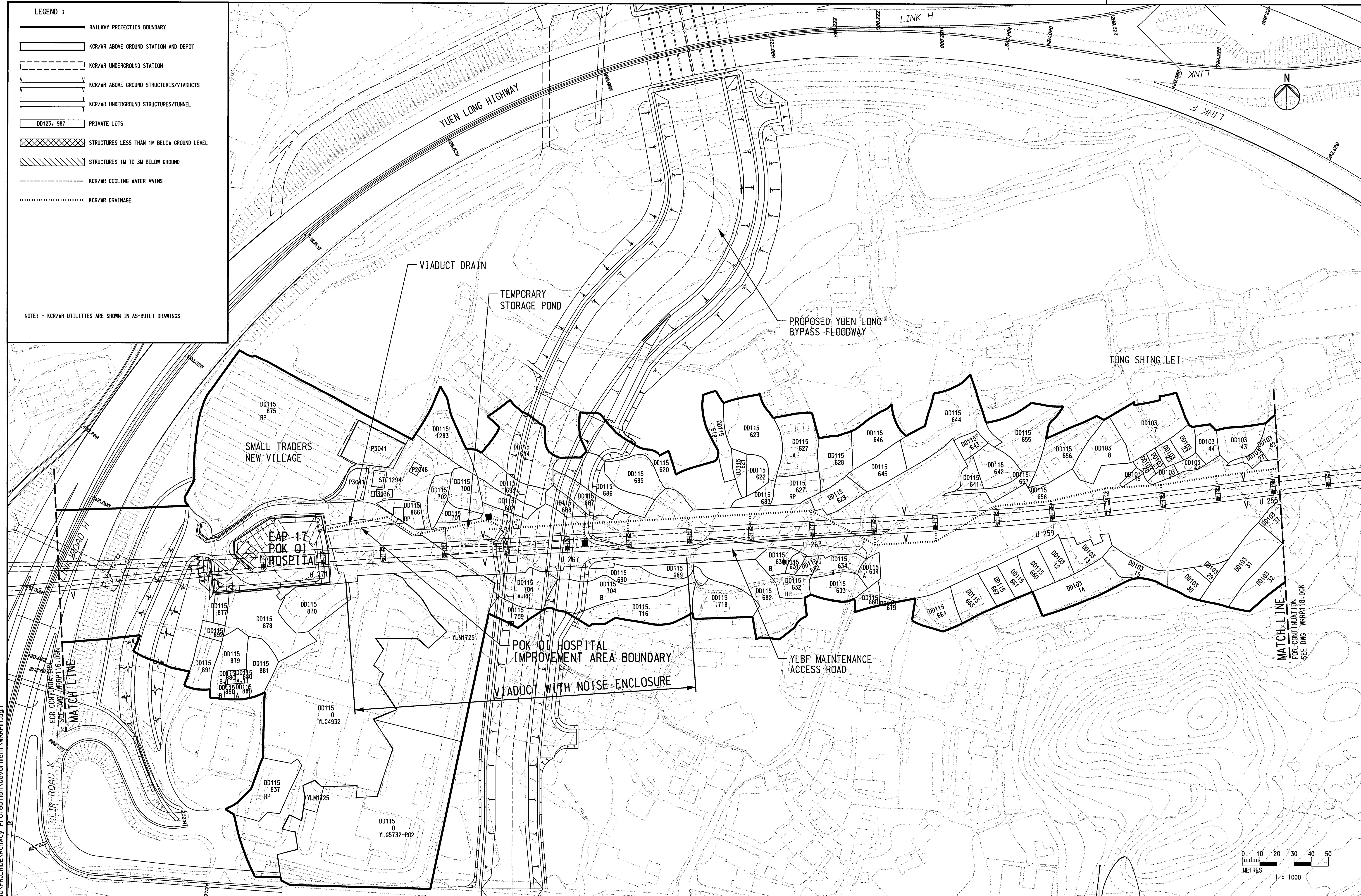


**LEGEND :**

- RAILWAY PROTECTION BOUNDARY
- KCR/WR ABOVE GROUND STATION AND DEPOT
- KCR/WR UNDERGROUND STATION
- KCR/WR ABOVE GROUND STRUCTURES/VIADUCTS
- KCR/WR UNDERGROUND STRUCTURES/TUNNEL
- DD123, 987 PRIVATE LOTS
- STRUCTURES LESS THAN 1M BELOW GROUND LEVEL
- STRUCTURES 1M TO 3M BELOW GROUND
- KCR/WR COOLING WATER MAINS
- KCR/WR DRAINAGE

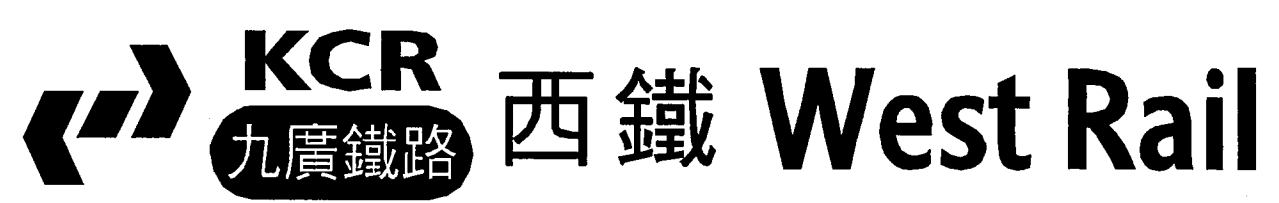
NOTE: - KCR/WR UTILITIES ARE SHOWN IN AS-BUILT DRAWINGS



User: workspace c:\cadd\_apps\mstrnu\workspace\users\example\lcf, UserRef: c:\cadd\_apps\mstrnu\workspace\projects\pcef  
 PRINTED BY: A450188 02/06/03 03:42:11PM  
 FILENAME: I:\Cadd\WLR\_DWG\PRJ\_WIDE\Railway Protection\Government\WRRP117.dgn

REV	DATE	BY	SUB	APP	DESCRIPTION
02JUN2003	SN	ADM	LSC		SECOND ISSUE
08NOV2002	SN	ADM	LSC		FIRST ISSUE

DESIGNED BY	SN
DRAWN BY	M K CHUNG
CHECKED BY	ADM
IN CHARGE	LSC
DATE	



AREA NUMBER 3 OF THE SCHEDULED AREAS  
 FIFTH SCHEDULE  
 BUILDINGS ORDINANCE (CAP.123)  
 RAILWAY LINES OF THE  
 KOWLOON - CANTON RAILWAY CORPORATION  
 - WEST RAIL (PHASE I)  
 RAILWAY PROTECTION PLAN

Signed:   
 (Michael M Y-SUEN)  
 Secretary for Housing, Planning and Lands  
 Date: 6 JUN 2003



CADD FILE NO	WRRP117.DGN	CADD DATE	29JUL2002
SCALE	1:1000 @ A1		
DRAWING NUMBER	KCR/WR/RP/117		
SHEET NO	17	STAGE CODE	REV 1