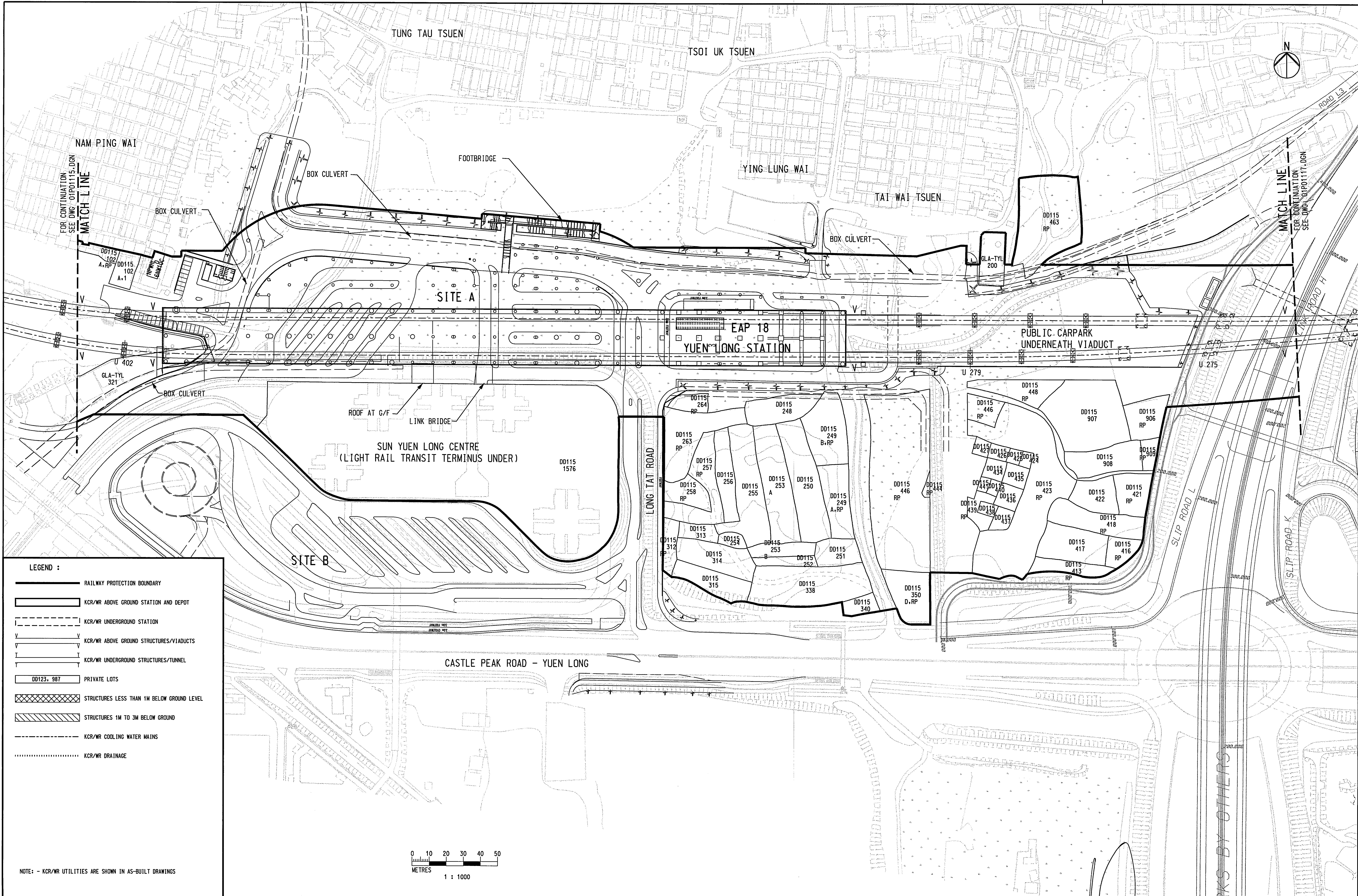


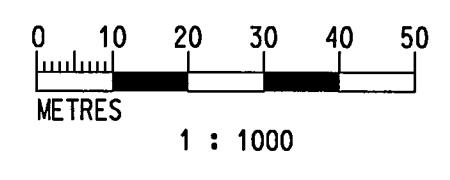
User: workspace\c:\cadd\apps\mstrn\workspace\users\example\userRef at\cadd\apps\mstrn\workspace\projects\p01115.dgn  
 PRINTED BY: AA0098 02/06/03 03:44:42 PM  
 FILENAME: I:\cadd\w\_r\dwg\p\_r\w\_r\Railway Protection\Government\WRRP116.dgn



**LEGEND :**

- RAILWAY PROTECTION BOUNDARY
- ▭ KCR/WR ABOVE GROUND STATION AND DEPOT
- ▭ KCR/WR UNDERGROUND STATION
- V V KCR/WR ABOVE GROUND STRUCTURES/VIADUCTS
- V V KCR/WR UNDERGROUND STRUCTURES/TUNNEL
- DD123, 987 PRIVATE LOTS
- ▨ STRUCTURES LESS THAN 1M BELOW GROUND LEVEL
- ▨ STRUCTURES 1M TO 3M BELOW GROUND
- KCR/WR COOLING WATER MAINS
- ..... KCR/WR DRAINAGE

NOTE: - KCR/WR UTILITIES ARE SHOWN IN AS-BUILT DRAWINGS



| REV       | DATE | BY  | SUB | APP | DESCRIPTION  |
|-----------|------|-----|-----|-----|--------------|
| 02JUN2003 | SN   | ADM | LSC |     | SECOND ISSUE |
| 08NOV2002 | SN   | ADM | LSC |     | FIRST ISSUE  |

|             |           |
|-------------|-----------|
| DESIGNED BY | SN        |
| DRAWN BY    | M K CHUNG |
| CHECKED BY  | ADM       |
| IN CHARGE   | LSC       |
| DATE        |           |



AREA NUMBER 3 OF THE SCHEDULED AREAS  
 FIFTH SCHEDULE  
 BUILDINGS ORDINANCE (CAP. 123)

RAILWAY LINES OF THE  
 KOWLOON - CANTON RAILWAY CORPORATION  
 - WEST RAIL (PHASE 1)  
 RAILWAY PROTECTION PLAN

Signed:   
 (Michael M Y SIEN)  
 Secretary for Housing, Planning and Lands  
 Date: 6 JUN 2003



|                |               |            |           |
|----------------|---------------|------------|-----------|
| CADD FILE NO   | WRRP116.DGN   | CADD DATE  | 29JUL2002 |
| SCALE          | 1:1000 @ A1   |            |           |
| DRAWING NUMBER | KCR/WR/RP/116 |            |           |
| SHEET NO       | 16            | STAGE CODE | REV 1     |