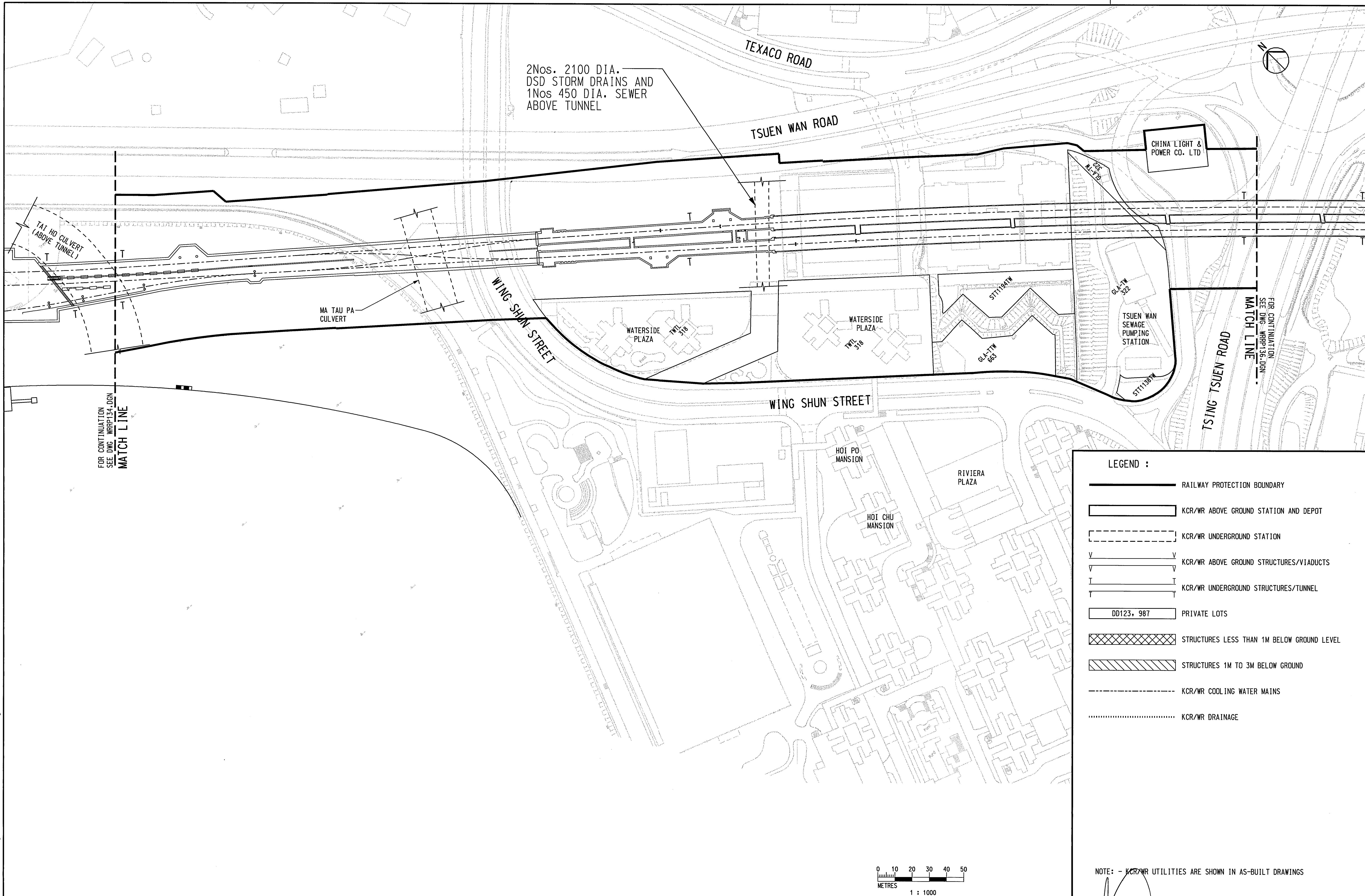


User:WorkSpace ca:\cad\apps\mstru\WorkSpace\Users\exampl\jct\UserRef ca:\cad\apps\mstru\WorkSpace\Projects\pccf  
 PRINTED BY: A45018 02/06/03 04:36:58 PM  
 FILENAME: H:\Cadd\W.R.DWG\PRJ\WIDE\Railway Protection\Government\WRRP135.dgn

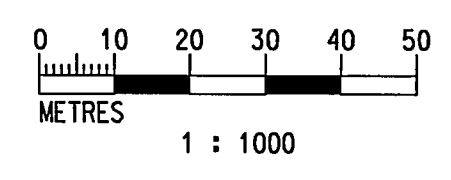


FOR CONTINUATION  
SEE DWG WRRP134.DGN  
MATCH LINE

FOR CONTINUATION  
SEE DWG WRRP136.DGN  
MATCH LINE

LEGEND :

- RAILWAY PROTECTION BOUNDARY
- KCR/WR ABOVE GROUND STATION AND DEPOT
- KCR/WR UNDERGROUND STATION
- KCR/WR ABOVE GROUND STRUCTURES/VIADUCTS
- KCR/WR UNDERGROUND STRUCTURES/TUNNEL
- DD123, 987 PRIVATE LOTS
- STRUCTURES LESS THAN 1M BELOW GROUND LEVEL
- STRUCTURES 1M TO 3M BELOW GROUND
- KCR/WR COOLING WATER MAINS
- KCR/WR DRAINAGE



NOTE: - KCR/WR UTILITIES ARE SHOWN IN AS-BUILT DRAWINGS

REV	DATE	BY	SUB	APP	DESCRIPTION
△					
△					
△					
△					
△	02JUN2003	SN	ADM	LSC	SECOND ISSUE
△	08NOV2002	SN	ADM	LSC	FIRST ISSUE

DESIGNED BY SN
DRAWN BY M. K. CHUNG
CHECKED BY ADM
IN CHARGE LSC
DATE



AREA NUMBER 3 OF THE SCHEDULED AREAS  
 FIFTH SCHEDULE  
 BUILDINGS ORDINANCE (CAP.123)  
 RAILWAY LINES OF THE  
 KOWLOON - CANTON RAILWAY CORPORATION  
 - WEST RAIL (PHASE I)  
 RAILWAY PROTECTION PLAN

Signed:   
 (Michael M Y SUEN)  
 Secretary for Housing, Planning and Lands  
 Date: 6 JUN 2003



CADD FILE NO WRRP135.DGN	CADD DATE 29JUL2002
SCALE 1:1000 @ A1	DRAWING NUMBER KCR/WR/RP/135
SHEET NO 35	STAGE CODE REV 1