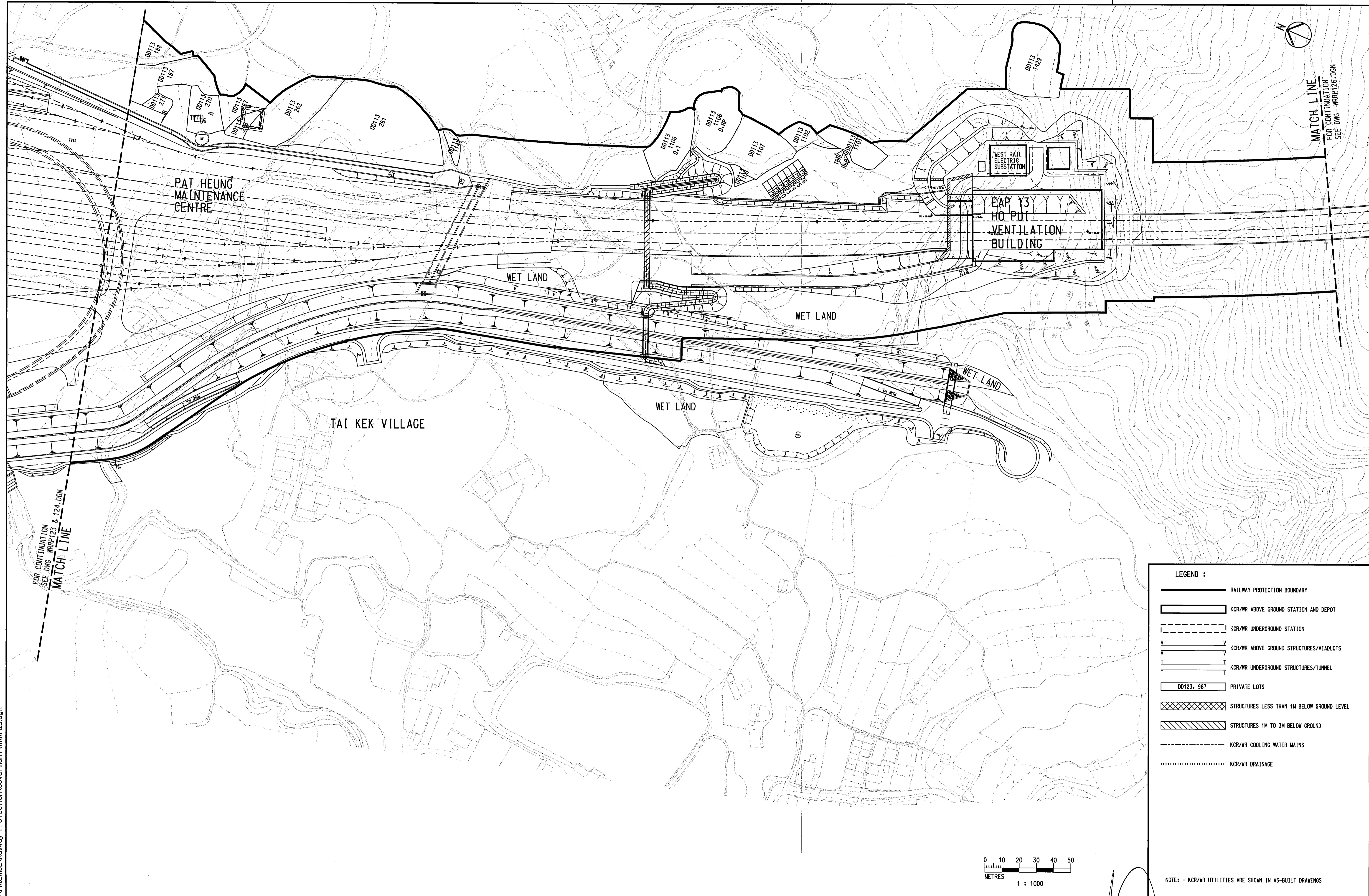


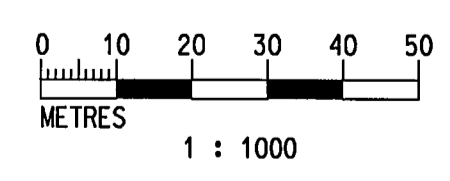
User: workspace at cadd\_apps metrnu Workspace\Users\example\ctf\_UserRef at cadd\_apps metrnu Workspace\Projects\pof  
 PRINTED BY: A50188 02/06/03 04:22:25 PM  
 FILENAME: h:\cadd\w\_r\_dwg\prj\_wide\Railway Protection\Government\WRRP125.dgn  
 Maps reproduced with permission of the Director of Lands. (C) Hong Kong Government.



**LEGEND :**

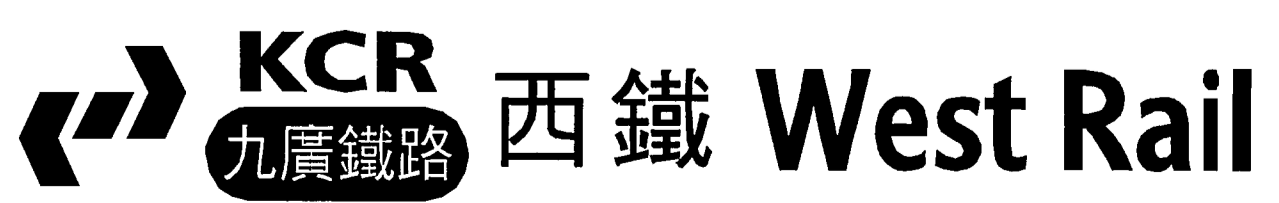
- RAILWAY PROTECTION BOUNDARY
- KCR/WR ABOVE GROUND STATION AND DEPOT
- KCR/WR UNDERGROUND STATION
- KCR/WR ABOVE GROUND STRUCTURES/VIADUCTS
- KCR/WR UNDERGROUND STRUCTURES/TUNNEL
- DD123, 987 PRIVATE LOTS
- STRUCTURES LESS THAN 1M BELOW GROUND LEVEL
- STRUCTURES 1M TO 3M BELOW GROUND
- KCR/WR COOLING WATER MAINS
- KCR/WR DRAINAGE

NOTE: - KCR/WR UTILITIES ARE SHOWN IN AS-BUILT DRAWINGS



REV	DATE	BY	SUB	APP	DESCRIPTION
02JUN2003	SN	ADM	LSC		SECOND ISSUE
08NOV2002	SN	ADM	LSC		FIRST ISSUE

DESIGNED BY  
SN  
 DRAWN BY  
M. K. CHUNG  
 CHECKED BY  
ADM  
 IN CHARGE  
LSC  
 DATE



AREA NUMBER 3 OF THE SCHEDULED AREAS  
 FIFTH SCHEDULE  
 BUILDINGS ORDINANCE (CAP.123)  
 RAILWAY LINES OF THE  
 KOWLOON - CANTON RAILWAY CORPORATION  
 - WEST RAIL (PHASE 1)  
 RAILWAY PROTECTION PLAN

Signed:   
 (Michael M Y SUEN)  
 Secretary for Housing, Planning and Lands  
 Date: 6 JUN 2003



CADD FILE NO WRRP125.DGN	CADD DATE 29JUL2002
SCALE 1:1000 @ A1	
DRAWING NUMBER KCR/WR/RP/125	
SHEET NO 25	STAGE CODE/REV 1