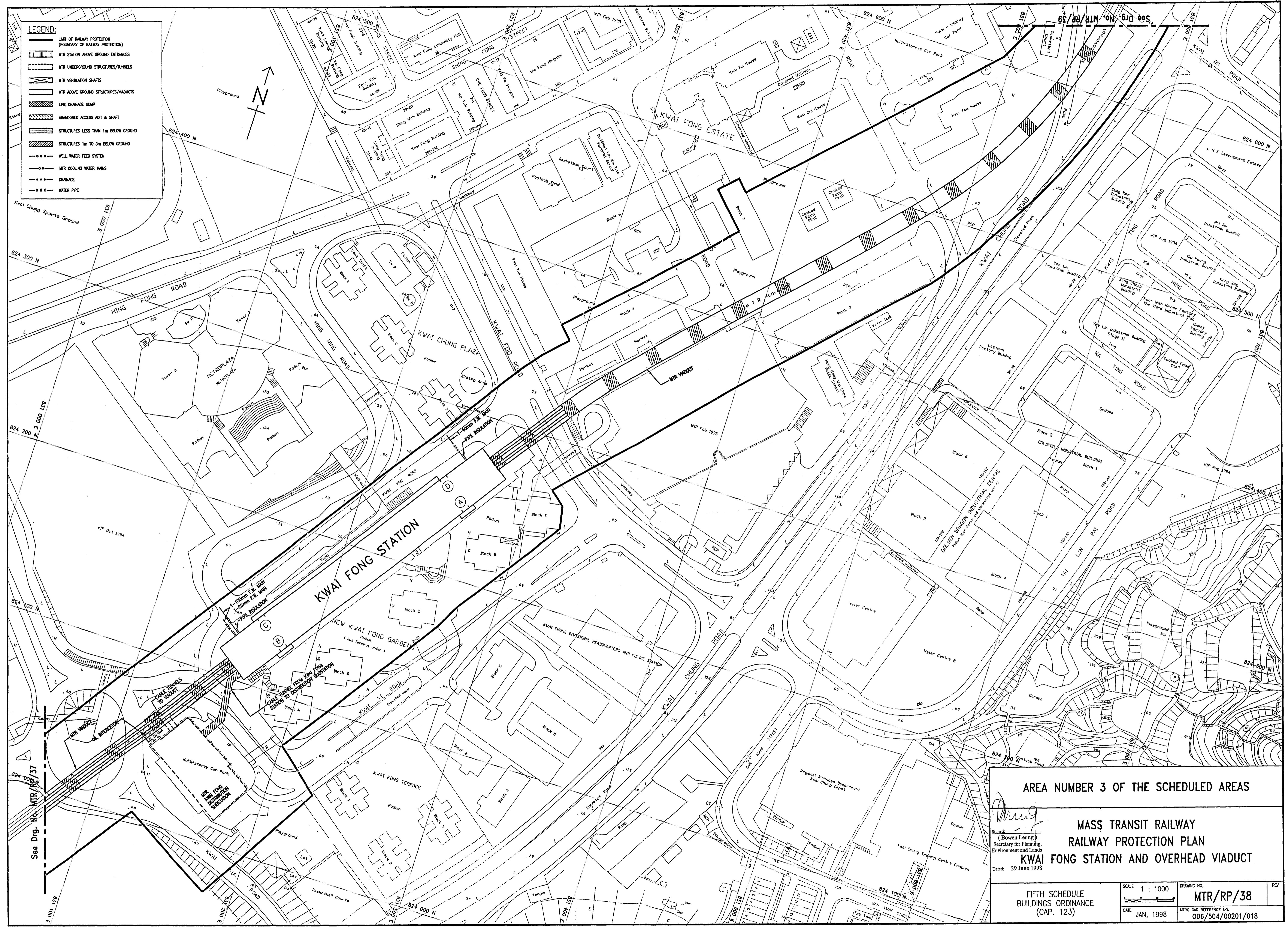


- LEGEND:**
- LIMIT OF RAILWAY PROTECTION (BOUNDARY OF RAILWAY PROTECTION)
 - ▬ MTR STATION ABOVE GROUND ENTRANCES
 - ▬ MTR UNDERGROUND STRUCTURES/TUNNELS
 - ▬ MTR VENTILATION SHAFTS
 - ▬ MTR ABOVE GROUND STRUCTURES/WAQUETS
 - ▬ LINE DRAINAGE SLAMP
 - ▬ ABANDONED ACCESS ADIT & SHAFT
 - ▬ STRUCTURES LESS THAN 1m BELOW GROUND
 - ▬ STRUCTURES 1m TO 3m BELOW GROUND
 - WELL WATER FEED SYSTEM
 - MTR COOLING WATER MAINS
 - DRAINAGE
 - WATER PIPE



AREA NUMBER 3 OF THE SCHEDULED AREAS

**MASS TRANSIT RAILWAY
RAILWAY PROTECTION PLAN
KWAI FONG STATION AND OVERHEAD VIADUCT**

Signed: *(Bowen Leung)*
Secretary for Planning,
Environment and Lands

Date: 29 June 1998

FIFTH SCHEDULE BUILDINGS ORDINANCE (CAP. 123)	SCALE 1 : 1000	DRAWING NO. MTR/RP/38	REV
DATE JAN, 1998	MTR COO REFERENCE NO. OD6/504/00201/018		