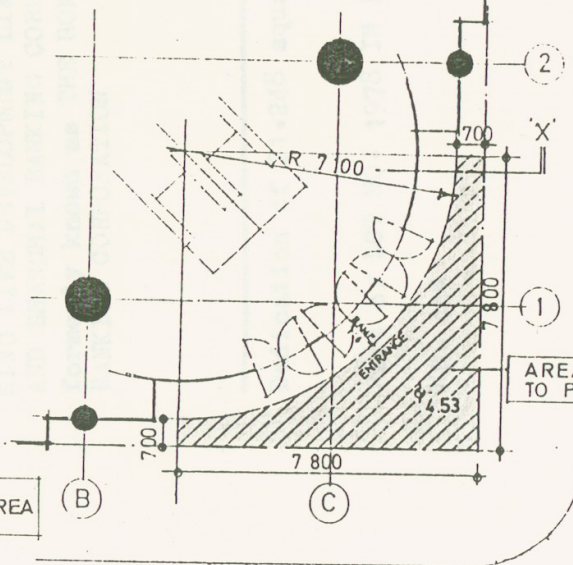
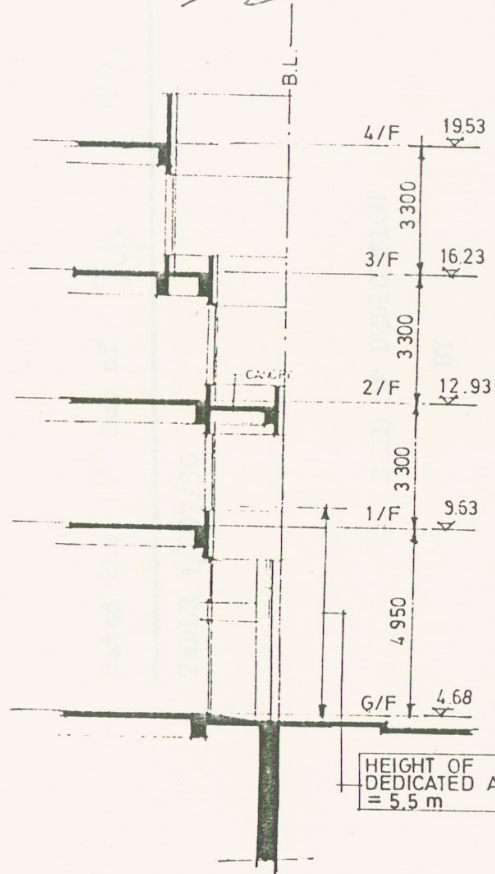


*Handwritten signature*

LAW SHUK HOI (DIRECTOR)

HUI LAM PO (DIRECTOR)



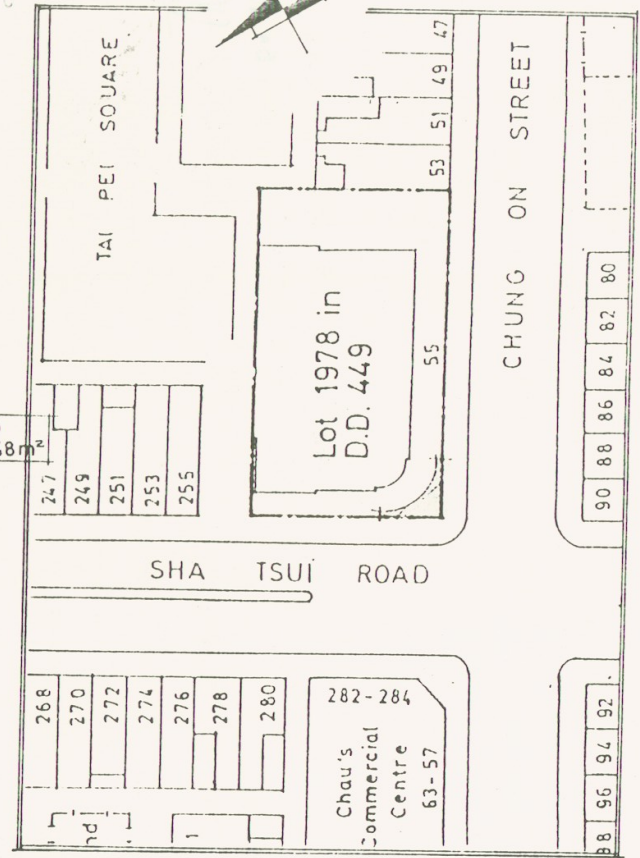
眾安街 Chung On Street

AREA DEDICATED TO PUBLIC (21,248 m<sup>2</sup>)

沙咀道 Sha Tsui Road

DIAGRAMMATIC SECTION  
SCALE 1:200

PART OF GROUND FLOOR PLAN  
SCALE 1:200



BLOCK PLAN  
SCALE 1:1000

英皇娛樂廣場, 荃灣眾安街55號  
Emperor Plaza, 55 Chung On Street, Tsuen Wan

Lot 1978 in D.D. 449  
AREA DEDICATED TO PUBLIC