

Division 2 --- HOTELS, HOSTELS AND GUESTHOUSES

This Division is applicable to guest rooms designated for the use of persons with a disability in hotels, hostels and guesthouses.

MANDATORY SECTION

Performance Objectives

7. Guest Rooms

- (1) The accessible guest rooms provided in a hotel, hostel or guesthouse shall be accessible by persons with a disability not only to the rooms but also to all sleeping, bathing and sanitary facilities in the rooms.

Obligatory Design Requirements

Minimum Provision

- (2) A minimum of two accessible guest rooms with full facilities for persons with a disability shall be provided in a hotel, hostel and guesthouse. Two such accessible rooms shall be provided for every 100 guest rooms and any part thereof. (For example, a total of four such accessible rooms shall be provided if there are 150 guest rooms.)

The bathroom and shower facilities serving an accessible guest room shall comply with Division 12.

BEST PRACTICE SECTION

A. Design Considerations

- (a) Within an accessible guest room, wheelchair user should be able to manoeuvre around and use the facilities in the room, and operate switches and controls. The internal layout should be large enough to enable a wheelchair user to transfer to one side of a bed, with or without assistance.
- (b) In addition, it is important to ensure that the built-in wardrobes and shelving in all guest rooms are accessible and convenient to use.

B. Recommended Design Requirements

A typical guest room layout is shown in Figure 2 and typical bathroom and shower compartment are shown in Figure 27.

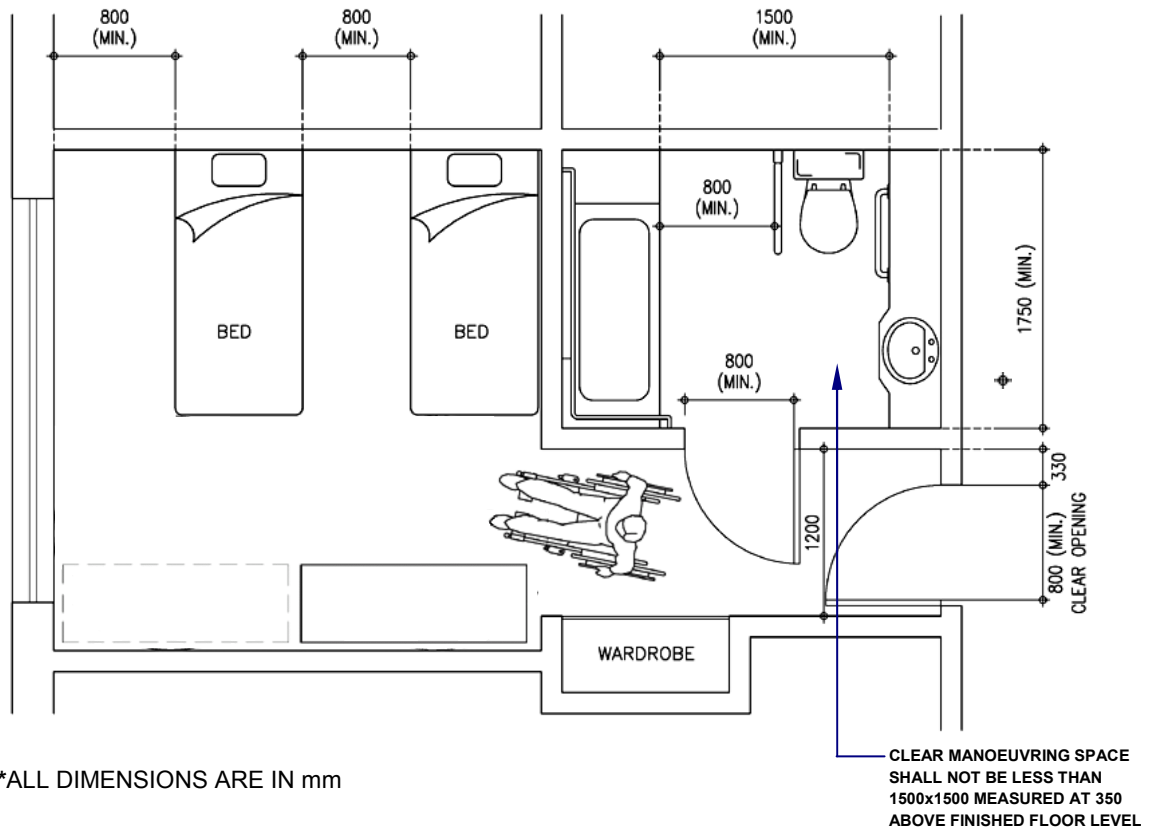


Figure 2 – Typical Guest Room Layout