

Division 12 --- BATHROOMS AND SHOWER COMPARTMENTS

This Division sets out requirements for accessible bathrooms and shower compartments as required under paragraph 7 in Division 2.

MANDATORY SECTION

Performance Objectives

The accessible bathrooms and shower compartments shall be so designed and equipped with sanitary fittings and installations to allow persons with a disability and the elderly to use them without assistance from others.

Obligatory Design Requirements

56. Bathtubs

- (1) There shall be a clear floor space of not less than 1500mm x 800 mm in front of the bathtub (see Figure 27);
- (2) The bathtub shall be provided with a seat of not less than 250 mm in width (see Figure 27); and
- (3) The bathtub shall have a maximum height of 380 mm.

57. Grab Rails for Bathtub

Grab rails shall: -

- (i) not rotate within their fixing fittings;
- (ii) have a diameter between 32 mm – 40 mm and have a grip space of not less than 30 mm clear from the wall;
- (iii) be at least 900 mm long, installed horizontally or slanting at an angle not exceeding 20 degrees along the length of the bathtub and at a height between 150 mm to 300 mm above the rim of the bathtub ; and
- (iv) be at least 600 mm long, installed vertically at the plug end of the bathtub adjacent to the clear floor space with the lower end 150 mm to 300 mm above the rim of the bathtub.

58. Taps and Controls of Bathtub

Taps and other controls shall: -

- (a) have lever type handles at least 75mm long from the centre of rotation to the handle tip;
- (b) be installed at the plug end of the bathtub; and
- (c) be not more than 450 mm above the rim of the bathtub.

Obligatory Design Requirements (Cont'd)

59. Shower Heads

- (1) Shower heads shall: -
 - (a) be of the hand-held type;
 - (b) be provided with a hose not less than 1500 mm in length; and
 - (c) be provided with a wall mounting bracket to allow use in a fixed position.

- (2) Where shower heads are mounted on a vertical bar, the bar shall:-
 - (a) have a minimum length of 500 mm with the lower end not less than 450 mm above the finished floor level;
 - (b) be installed so as not to obstruct the use of grab rails referred to in paragraph 57; and
 - (c) be so mounted to be able to carry a static load of 150kg in case they are mistakenly used as a grab rail.

60. Shower Compartments

Shower compartments shall have internal dimensions of not less than 1500 mm x 900 mm. The minimum clear floor space in front of the shower entrance shall be 1500 mm x 800 mm with the 1500 mm dimension parallel to the shower entrance.

61. Grab Rails for Shower Compartments

- Grab rails for shower compartments shall: -
- (i) comply with paragraph 57 (i) and (ii);
 - (ii) be L-shaped or two bars arranged in L-shaped configuration and not be less than 750 mm by 900 mm in length;
 - (iii) be installed at a height between 700 mm and 800 mm from the shower floor; and
 - (iv) be capable of carrying a static load of 150kg.

62. Thresholds

- Thresholds for roll-in shower compartments shall: -
- (a) not be more than 13 mm high; and
 - (b) have bevelled edges.

Obligatory Design Requirements (Cont'd)

63. Shower Seats

The shower seats shall: -

- (i) have a rounded edge and be self-draining ;
- (ii) be installed on the wall next to the taps and controls;
- (iii) not be less than 550 mm in width and 400 mm in depth; and
- (iv) be installed at a height between 430 mm and 480 mm from the top of the seat to the finished floor level.

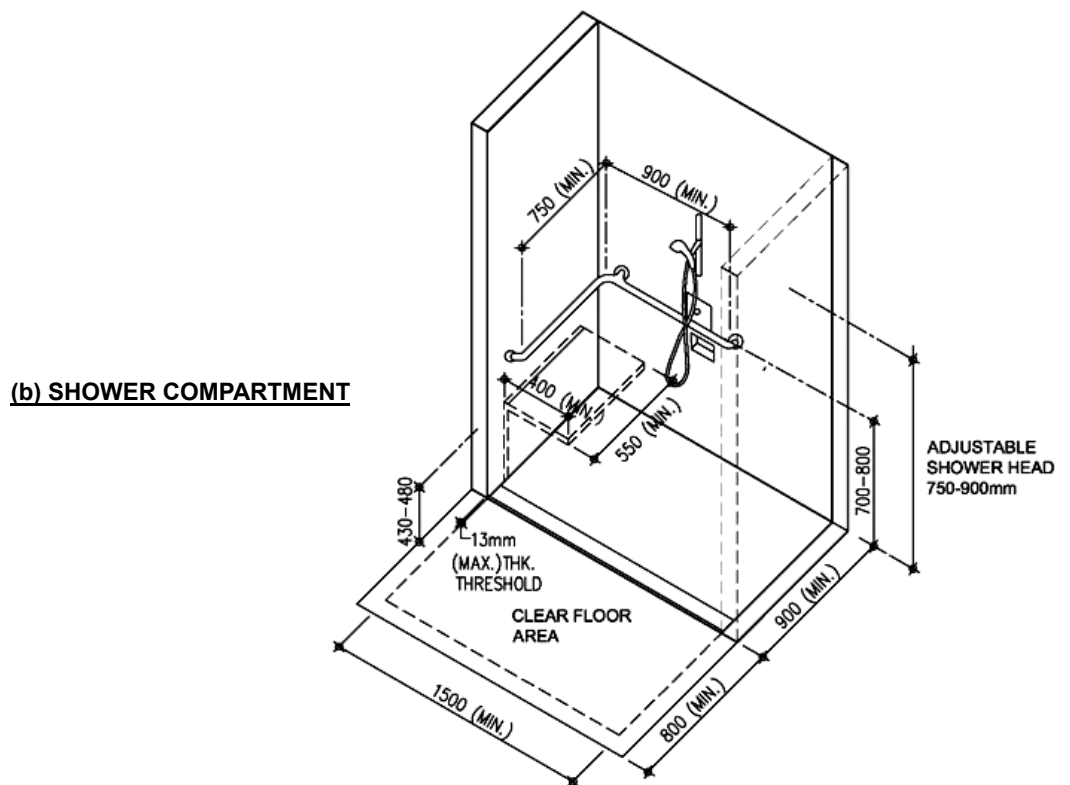
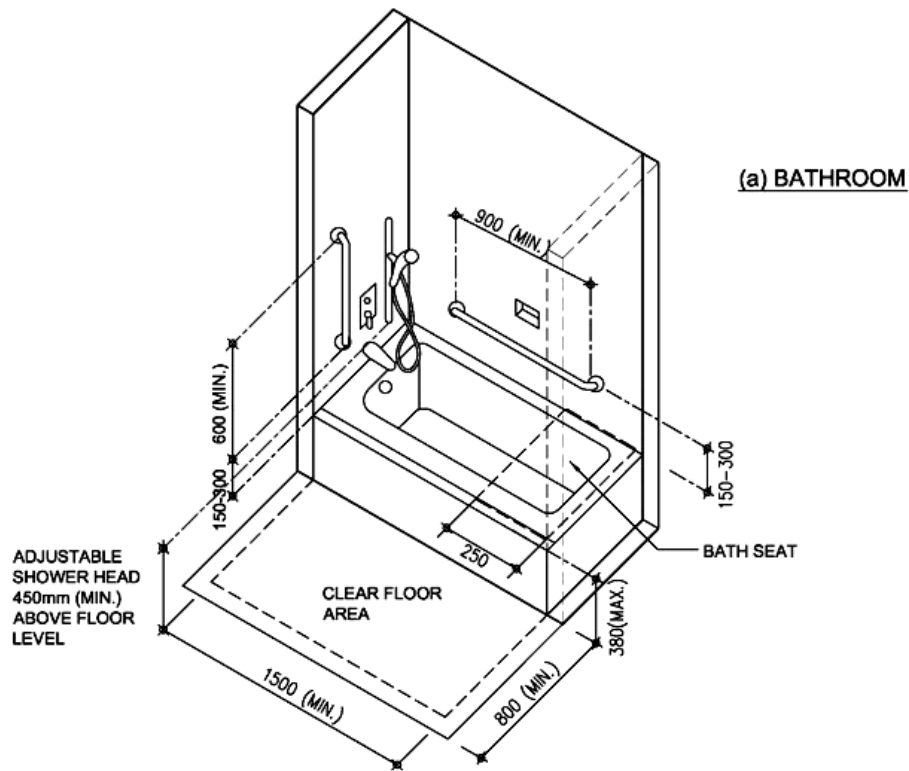
BEST PRACTICE SECTION

A. Design Considerations

Wheelchair users generally require larger space for access to the bathrooms. A proportion of guest rooms should be designed to accommodate the need of wheelchair users.

B. Recommended Design Requirements

Taps and other controls should be installed between the centre line and the outer edge of the bathtub.



*ALL DIMENSIONS ARE IN mm

Figure 27 - Example of Bathroom and Shower Compartment